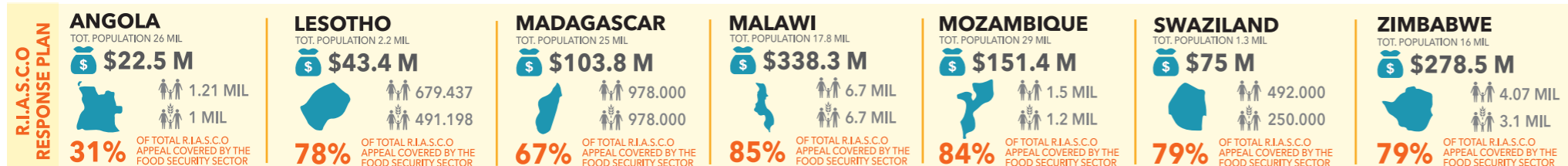
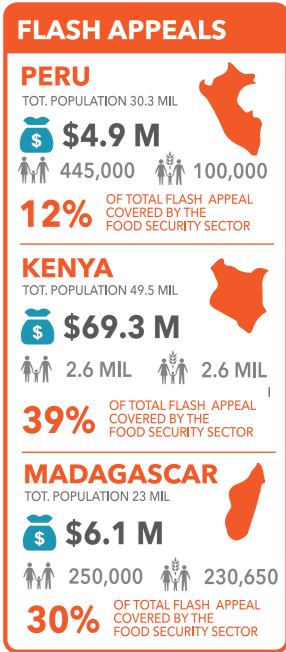
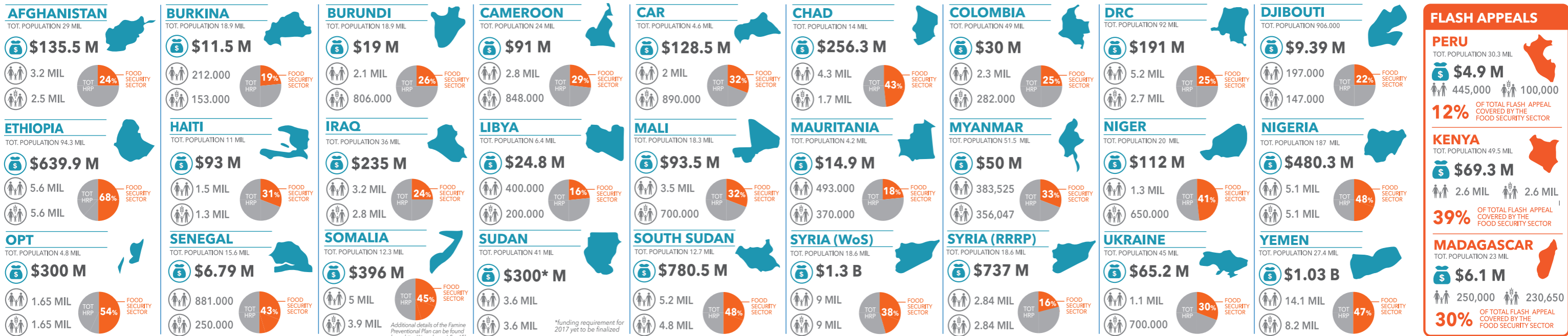


In 2017, the humanitarian community is collectively aiming to support over 53 million people globally with lifesaving and livelihoods support through humanitarian appeals. There are thirty-four response plans involving FSC partners and national governments with an overall value of US\$ 7.2 billion. In light of limited resources and competing crises, partners are implementing activities tailored contextually, and using cash transfers to the extent possible. Protracted, conflict related crises in Syria, Yemen, South Sudan, Nigeria and Somalia remain high profile, in addition to those countries left with the consequences of the 2015-2016 ENSIO event which affected some 60 million people globally. Food Security responses account for almost one-third of the overall global appeal (<http://www.unocha.org/stateofaid/>) in 2017.

It is essential that partners continue to build-in livelihoods activities to the extent possible in order to foster household and community resilience, while also addressing gaps in immediate food needs of the most vulnerable through in-kind and cash/voucher transfers. Urbanisation and its impact on agricultural production are also areas of key concern and are being addressed through educational programmes and incentive schemes aimed at connecting youth with agricultural activities. The immediate priorities are preventing famine in Yemen, Nigeria, and in Somalia and addressing the declared consequences in South Sudan. The UN is requested over US\$ 4 billion to assist across these emergencies.

The Food Security Cluster (FSC) has been established to coordinate the food security response during a humanitarian crisis, addressing issues of food availability, access and utilisation. The Cluster is based at WFP headquarters in Rome and is co-led by FAO and WFP. The Global Support Team includes FAO, WFP, NGO and Red Cross and Red Crescent members. The Food Security Cluster is about enhancing cooperation and partnerships. The FSC works directly with its partners and stakeholders that include international NGOs, the Red Cross and Red Crescent Movement, other cluster lead agencies, UN organizations, Governments and Donors. The FSC was formally endorsed by the Inter Agency Standing Committee (IASC) on the 15 December 2010. The gFSC provides some thirty Food Security Coordination Clusters/Sectors globally primarily with information management, human resources/surge, advocacy and policy support.



LEGEND

- PEOPLE IN NEED
- PEOPLE TARGETED
- FS FUNDING REQUIREMENT

