

MINUTES OF THE ABUJ FOOD SECURITY SECTOR MEETING

Location: Ministry of Agriculture and Natural Resources

Date: 09^h November 2023

Time: 10:00am – 12: 00PM

AGENDA

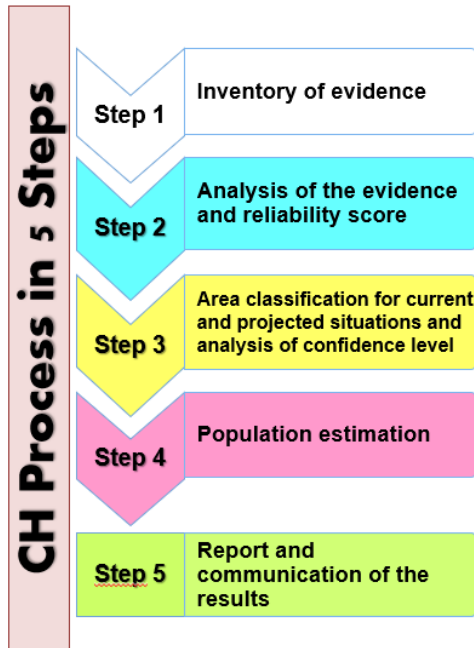
1. Welcome, Opening Remarks and Round of introductions
2. Review of Previous Meeting Minutes
3. November Cadre Harmonise(CH) Results Presentation -- FMAFS/NPFS (25mins)
4. Sector Updates
5. Sector Updates
6. Partner updates - Government stakeholders (MoA, NEDC, NEMA, SEMA, MRRR, NCFRMI, etc.)
7. AOB

SUMMARY OF ACTION POINTS

No	PROCEEDING	ACTION POINTS
1	<p>Welcome, Opening Remarks and Round of introduction The meeting was opened by the chair followed by a round of introduction, and the opening remark by Mr. Amu</p>	
2	<p>Review of Previous Meeting Minutes. The minutes of the previous meeting was adopted and there were no matters arising from the previous meeting.</p>	
3	<p>November Cadre Harmonise (CH) Results Presentation</p> <p>Short Background and Methodology</p> <ul style="list-style-type: none"> • The Cadre Harmonisé (CH) is an early warning tool developed for analyzing and classifying the severity of food and nutrition insecurity in the ECOWAS region 	

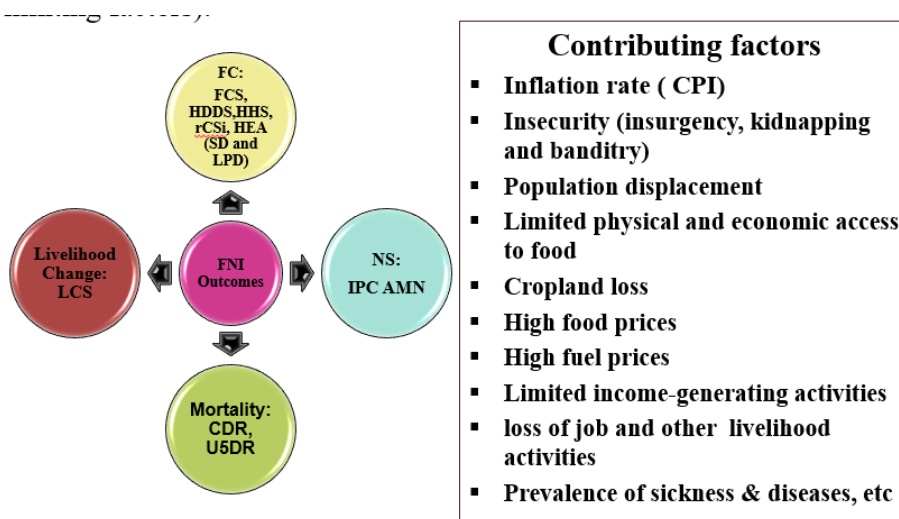
- It is the arbitration tool for triggering and mobilizing the ECOWAS Regional Food Security Reserve (RFSR) and assisting decision-makers for the UEMOA High-Level Committee on Food and Nutrition Security (CHSAN).

CH Steps



Evidence Used

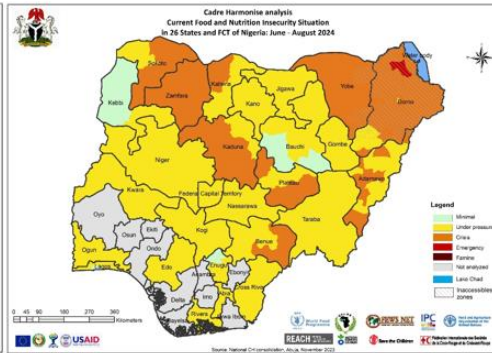
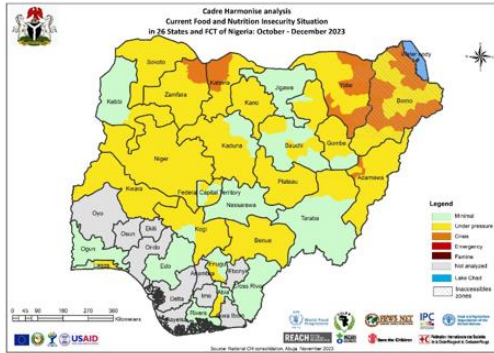
The CH was conducted based on the analysis of outcome indicators of food and nutrition security and contributing factors (key drivers and limiting factors).



Results of November Phase Classification of States in Nigeria

Current Period: October – December 2023

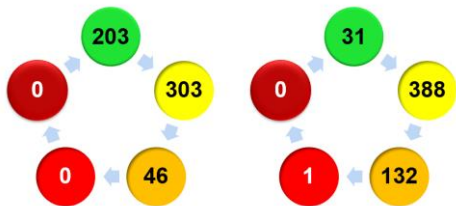
Projected Period: June – August 2024



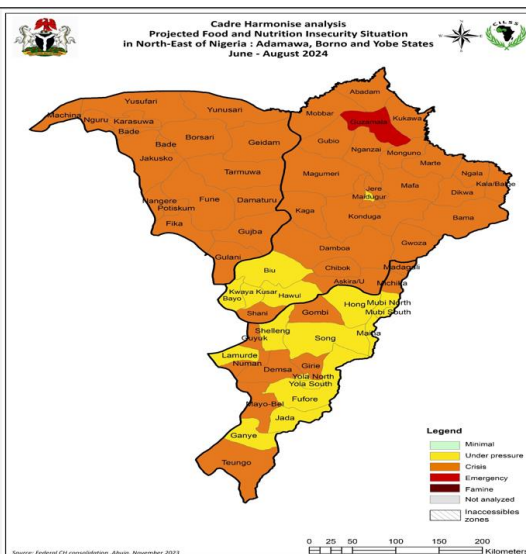
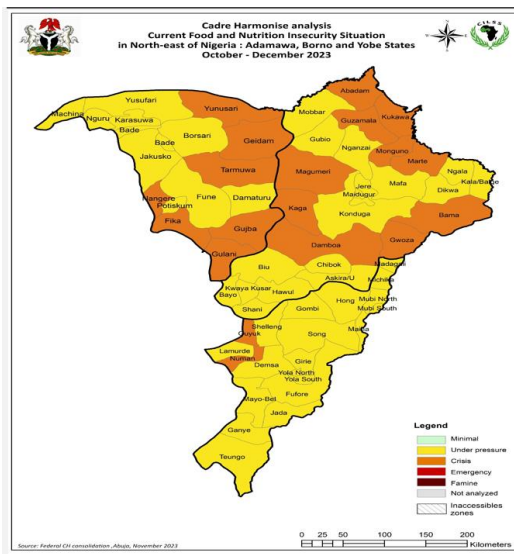
Summary of areas Analyzed and Phases

Current Period: Oct – Dec. 2023

Projected Period: June – August 2024



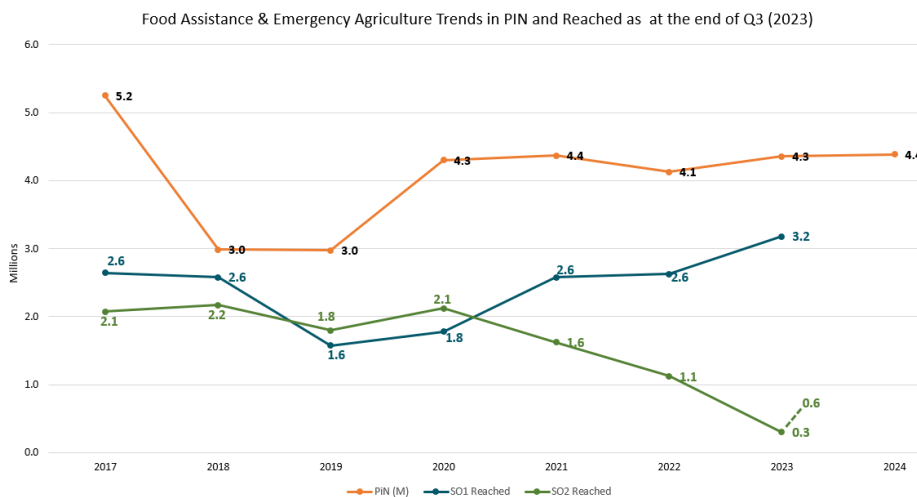
Current and Projected Situation for the BAY States



Borno state phase changes compared to the Last CH

Phase Changes	LGA	Reasons for the change	Remark
Phase 2 to 3	Jere	Dry spell conditions, low harvest, high cost of living conditions, Inflation, and loss of jobs	
Phase 3 to 2	Bayo (S.Borno)	Good rain and good harvests are expected, a low level of insecurity.	Generally, southern Borno had good weather conditions compared to last year's flooding while northern Borno had dry spells that will affect the community in lean season food stock.
	Biu (S.Borno)	Good rain and good harvests are expected, a low level of insecurity	
Phase 4 to 3	Abadam	Improvement in food consumption score due to the starting of farming & fishing activities , though it is an inaccessible area.	Note: the livelihood score is in phase 4, and the phase 4 population is about 19%

BAY states PIN, Reached Trends 2017 to 2024



Key Drivers and Limiting Factors

Key Drivers

- Insecurity (insurgency, kidnapping, banditry) impacting directly on the livelihoods of the households.
- High inflation rate impacting directly on household's food consumption and livelihoods.
- High fuel prices impacting the livelihoods of the households.
- High prices of food and non-food items.

Limiting Factors

- limited income-generating activities and loss of jobs and other livelihood activities.
- Limited access to potable water coupled with poor WASH practices.

- Cropland loss emergency especially in the Northeast and some parts of North Central and Northwest due to insecurity.

Recommendations

- Humanitarian agencies should urgently secure resources to sustain the implementation of life-saving interventions of food assistance and unconditional cash transfers (social welfare package) to the vulnerable populations in the affected areas.
- Sustain and scale up the provision of livelihood interventions to households with increased access to land.
- Sustain the facilitation of humanitarian access to inaccessible/hard-to-reach areas so as to provide life-saving assistance and livelihood protection interventions to those in critical need.
- Promote various emergency resilience-building interventions for households through MSMEs.
- Continue to complement the efforts of the government in implementing the recommendations following the outcome of the CH analysis, especially as it affects the populations and areas identified to be at risk of food and nutrition insecurity.

3. SECTOR UPDATES

Food Assistance Task Force:

Guidance Note: Food Assistance Targeting for Scale Down

- The prioritization tool/criteria (CH, Nutrition IPC, IDPs/new arrival status, Dry spell.....) the period will be from October to December.

<https://fscluster.org/nigeria/document/guidance-note-food-assistance-targeting>

HSM to the inaccessible and Hard to reach areas

- The HSM for September has already been disseminated while the Team is working on the October publication.
- An HSM advocacy visit in the BAY state was conducted and results are to be shared in the next Borno FSS meeting.

Agricultural Livelihood Working Group

Guidance Note: Targeting Criteria for Prioritization of Dry Season Operation

Purpose: to guide Partners in the utilization of scarce resources in an effective and efficient manner to succeed in Livelihood resilience building.

Dealt with: Geographical targeting, HH targeting, and Modality selection.

6	<p>Partner Update</p> <p>The program Director of CESD introduced the organization and their work in the Northeast of neem seed processing. This can be processed as organic fertilizer; the neem seed is available and accessible hence sustainable as a source of livelihood. An opportunity will be provided to CESD for a full presentation in the future.</p>	
7	<p>Closing: The meeting ended at about 12:00 noon, date for the next Meeting will be communicated.</p>	
8		

IN ATTENDANCE: 33 partners were in attendance - 42 individuals (12 Females & 30 Males)

Government/UN/Donors/Others	INGOs	NNGOs	Observers
WFP 1	Mercy Corps 1	CDHI 1	ICRC 1
FAO 2	CRS 2	TPF 2	
FMARD 1	Caritas Nigeria 1	EYN 1	
FEWSNET 1	DRC 2	CRUDAN 1	
MoANR 1	NRC 1	Green Code 1	
FSS 2	SIF 1	SALIENT 1	
BDSU 2	ZOA 2	CESD 2	
	SCI 2	SAHEI-GDI 1	
	Caritas Germany1	IDEE 2	
		APADE 1	
		N R M 1	
		SHO 1	
		IDS 1	
		GHIV Africa 1	
		EHARSI 1	