

## MINUTES OF THE AGRICULTURE & LIVELIHOODS WORKING GROUP MEETING (Teleconference)

**Location:** Adamawa, Borno and Yobe (BAY) states Teleconference

**Date:** 26 May 2021

**Time:** 2:00am – 3:00pm

### AGENDA

1. Welcome, Opening remarks from State leads ( Adamawa, Borno and Yobe) – 5Min
2. Review of Minutes of the previous meeting – 5Min
3. Final planning for Rain Season Planning updated (Sector to share Map of Coordination/Planning by partners who have submitted data) by Sector – 15min
  - Government and Non Government Partners to share more on their rain season plans
4. Presentation on Raining Season Activities [in kind] – By FAO – 15min
5. Presentation on Raining Season Activities [in cash] – Mercy corps 15min
6. Sector Updates
7. Partner update
8. AOB – 5 Min

### SUMMARY OF ACTION POINTS

1. Partners to share more information where available.
2. The Sector to send the Partner intervention Plan (PiP) for the rainy season - ONGOING
4. Sector to draft SOPs for CFW with relation to COVID-19 – Pending
5. The sector to follow up with the partners and Government in delivering rain season inputs to areas and households with relative access to land and capacity to plant.
6. The sector to follow up with partners to intervene in livestock activities in Adamawa LGAs. To be referred to the Livestock Working Group.

No	PROCEEDING	ACTION POINTS
1	<b>Welcome, Opening Remarks and Round of introductions</b> The meeting was opened by the Chair (Dr. Abdulrahman Tukur) and followed by self-introductions from the Government partners.	
2	<b>Review of Minutes of the previous meeting</b> The previous minutes was adopted.	Partners to continue to share information/ reports where available



3

Final planning for Rain Season Planning updated (Sector to share Map of Coordination/Planning by partners who have submitted data)

**Key Points to Note while developing the Maps:**

- Average Land Access Data per LGA
  - Number of HHs planned by Partners
  - Focusing on CH Phase 3 Households only as of the target category (In some areas for CH
- In phase 4 there might also be pockets of access to land if verified.

**Limitations of the Map**

- Doesn't take into consideration what the average HH acres of land accessed is
- Doesn't break down to ward level – This is to be done by partners on the ground
- Please ensure the inputs are provided unless extraordinary security situations

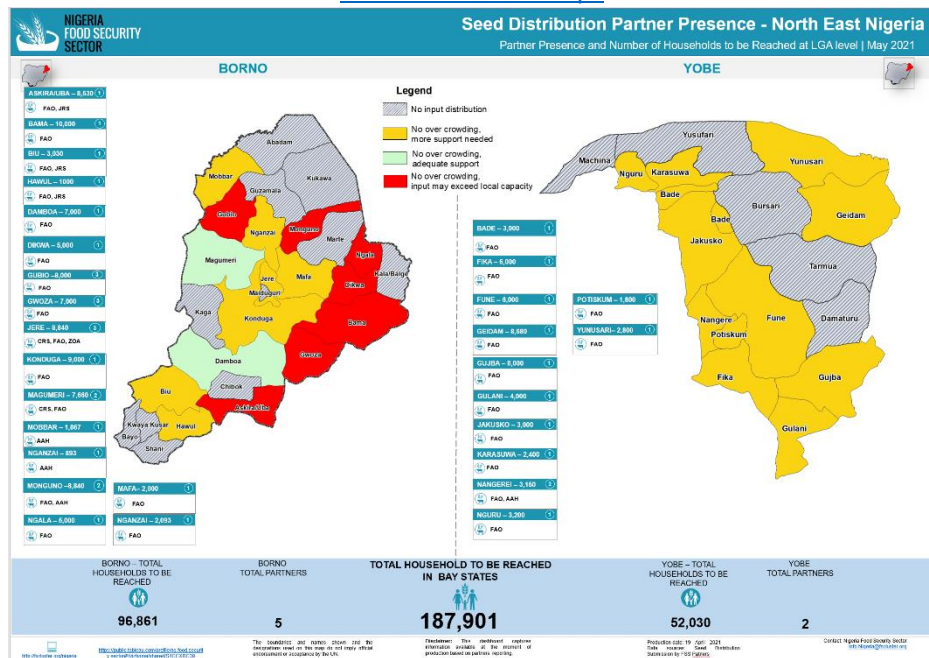
**Opportunities**

Complementarity of inputs (One partner say could provide fertilizer where there are seeds)  
 There are several areas with land access above 75% yet with no inputs assistance planned. For more information click below. ↓

More inputs still required as several LGAs with relatively good access to land still don't have sufficient inputs.

Partners are advocating that Agric input should be distributed in accessible areas/locations.

Presentation on Maps





<p>4</p>	<p><a href="#">Presentation on Raining Season Activities</a> by FAO</p> <ul style="list-style-type: none"> <li>FAO planned to provide Agricultural support [in kind] in form of quality seed and fertilizer. 65,800 out of 460,600 HH. In Adamawa 10,320 HH, Borno 40,00 HH while 15,480 in Yobe will benefit from the Agric input.</li> <li>Distribution will commence in early June 2021</li> </ul> <p><b>Discussion:</b></p> <ul style="list-style-type: none"> <li>❖ The seeds provided in the region are climate max varieties, as a result, the performance of the agricultural product are average.</li> <li>❖ Adamawa and Yobe has small allocation of resources and some of the LGAs are in phase 3</li> <li>❖ There is a high rate of malnutrition within Yobe as such it is going to be the focal for next upscale if more resources are to come.</li> </ul>	
<p>5</p>	<p><a href="#">Presentation on Raining Season Activities by Mercy Corps Maps Presentation</a></p> <ul style="list-style-type: none"> <li>Program is set and ongoing by Mercy corps to build the resilience of 26,875 HH in Yobe and increase their ability to cope with climatic change and complex crises.</li> <li>Unconditional cash transfer was made to households for strengthening crop and livestock association.</li> </ul>	
<p>6</p>	<p><b>Sector Update</b></p> <ul style="list-style-type: none"> <li>The sector is working closely with partners to facilitate the movement of cargo [farm input to various locations]</li> <li>The Borno State Government are empowering IDPs pertaining poultry production [layers] and distributing 16,00 birds to IDPs at different LGAs</li> </ul>	

	<ul style="list-style-type: none"> <li>• Projects on going where 20 crates of eggs were distributed to 300 IDP orphan children weekly.</li> <li>• A women poultry project is ongoing by CRS, aiming to create livestock employment opportunity in Borno and Adamawa to improve participants living conditions.</li> </ul>	
7	<p><b>Partner update</b></p> <ul style="list-style-type: none"> <li>❖ CRS is targeting 62,500 beneficiaries and the locations are Magumeri and Jere 8018 out of 1500 participants were identified in Magumeri while for Jere 770 out of 1000 were identified.</li> <li>❖ 27 Agro vendors were trained in Magumeri and Jere on humanitarian principles and humanitarian cord of conduct.</li> </ul>	
	<p><b>AOB</b> NONE</p>	
	<p><b>Closing Remarks</b> The next meeting will be held on Wednesday 9<sup>th</sup> June 2021.</p>	

**IN ATTENDANCE:** 8 partners were in attendance, 18 Individuals (3 Females & 15 Males)

Government/UN/Donors/Others	INGOs	NGOs
1. UNDP	2. MC	
3. FAO	4. AAH	
5. YOBE MoA	6. CRS	
7. Borno MoA		
8. Adamawa MoA		