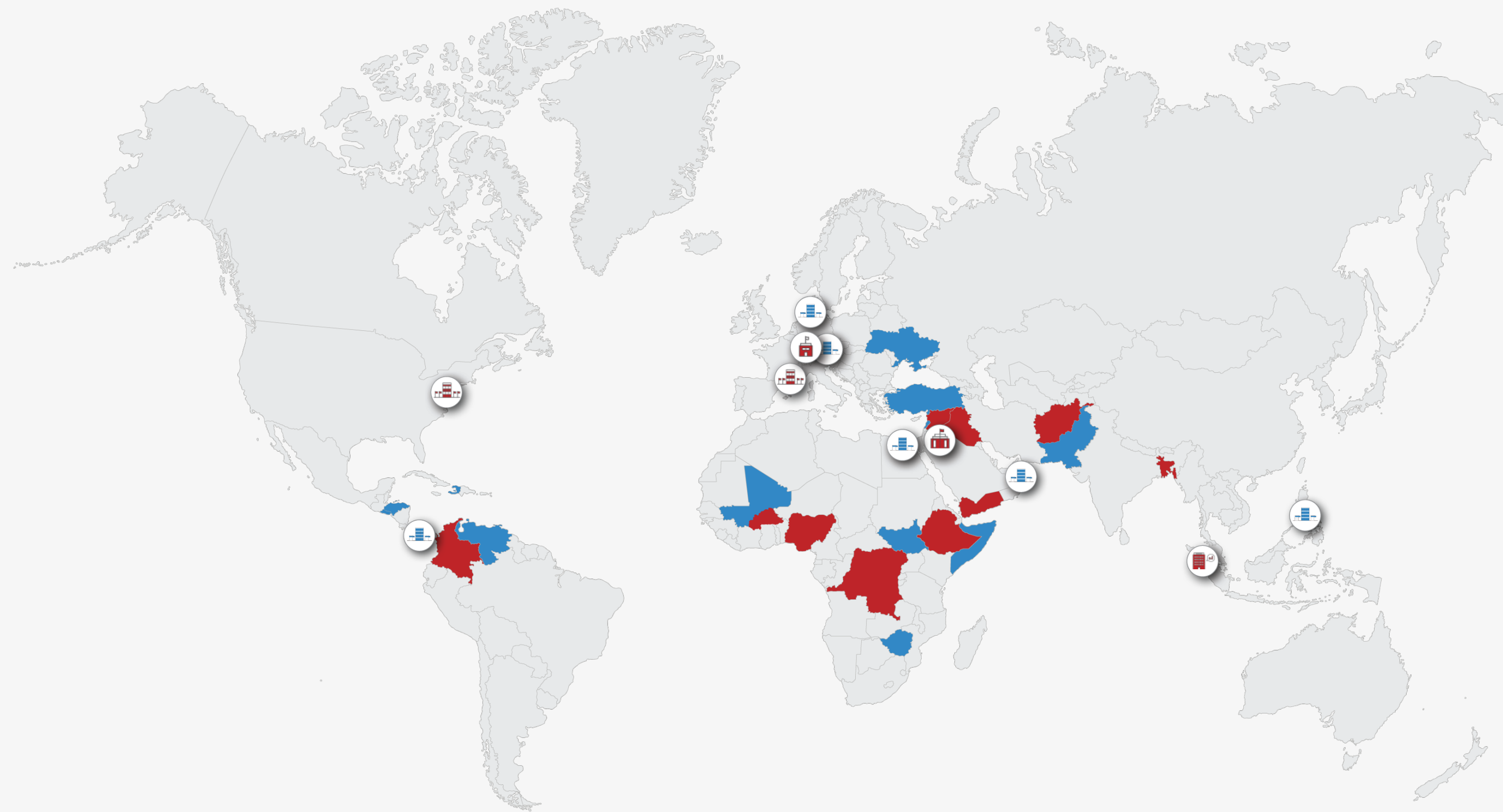




# iMMAP Ukraine IM Support Services

---

# iMMAP



<ul style="list-style-type: none"> <li>● <b>Country Offices 2020</b></li> <li>Afghanistan</li> <li>Bangladesh</li> <li>Burkina Faso</li> <li>Colombia</li> <li>Democratic Republic of Congo</li> <li>Ethiopia</li> <li>Iraq</li> <li>Nigeria</li> <li>Syria</li> <li>Yemen</li> </ul>	<ul style="list-style-type: none"> <li>🏠 <b>Headquarters</b></li> <li>Washington DC</li> <li>Marseille</li> <li>🏢 <b>Regional Offices</b></li> <li>Amman, Jordan</li> <li>🏢 <b>Representation Offices</b></li> <li>Geneva, Switzerland</li> <li>🏢 <b>Technical Offices</b></li> <li>Medan, Indonesia</li> </ul>
---	---

<ul style="list-style-type: none"> <li>● <b>Countries Supported</b></li> <li>Venezuela</li> <li>Zimbabwe</li> </ul>	<ul style="list-style-type: none"> <li>🏢 <b>Regional and Global Offices Supported</b></li> <li>Switzerland</li> <li>Global Health Cluster (Geneva)</li> <li>Denmark</li> <li>WHO Regional Office for Europe (Copenhagen)</li> <li>UAE</li> <li>WHO Dubai Logistics Hub (Dubai)</li> </ul>	<ul style="list-style-type: none"> <li>Egypt</li> <li>WHO Regional Office for the Eastern Mediterranean (Cairo)</li> <li>Philippines</li> <li>WHO Western Pacific Regional Office (Manila)</li> <li>Panama</li> <li>OCHA Regional Office for Latin America and the Caribbean (Panama)</li> </ul>
---	---	--

iMMAP is an international not-for-profit organization that provides information management services to humanitarian and development organizations, enabling partners to make informed decisions that ultimately provide high-quality targeted assistance to the world's most vulnerable populations.

We support humanitarian actors to solve operational and strategic challenges. Our pioneering approach facilitates informed and effective emergency preparedness, humanitarian response, and development aid activities by enabling evidence-based decision-making for UN agencies, humanitarian cluster/sector leads, NGOs, and government operations.

# Areas of Support

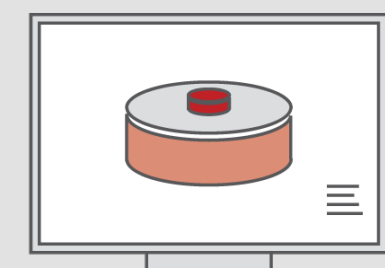
## Assessments

- Data Collection Forms (Development and Review)
- Data Processing and Analysis

## Data Visualization

- Development of templates (maps, dashboards, infographics)
- Interactive Dashboards
- Training session on how to update the products

## Capacity Building



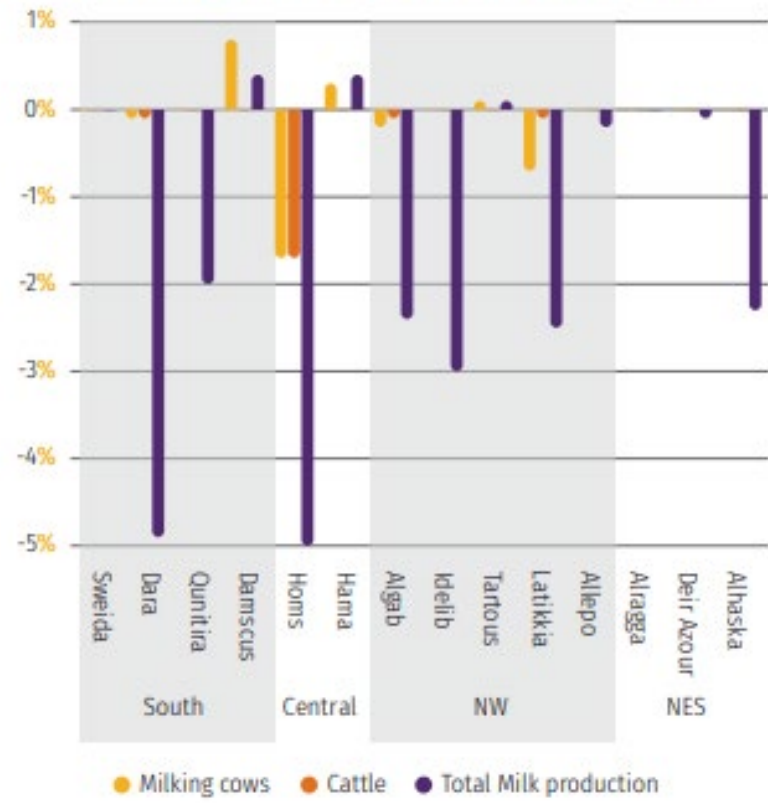
# Assessments

- Data Collection Forms (Development and Review)
- Data Processing and Analysis

What is your employment status?

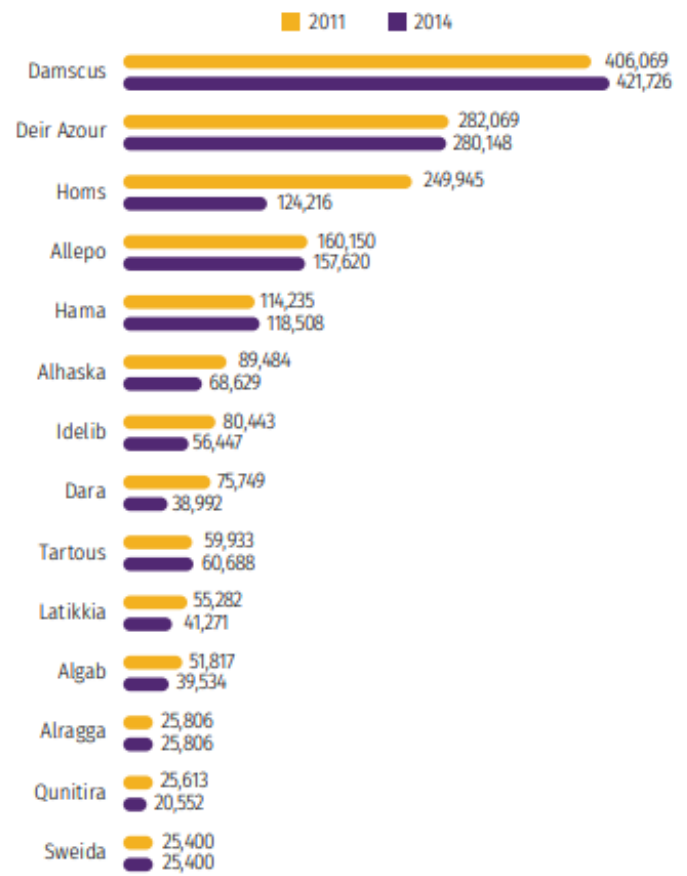
- Full-time Value: AUTOMATIC
- Part-time Value: AUTOMATIC
- Unemployed Value: AUTOMATIC
- Seasonal Value: AUTOMATIC
- Other (manually specify) Value: AUTOMATIC
- + Click to add another response... Value: AUTOMATIC

Figure 10: Percentage change of cattale herd size, lactatir cows and milk production (2011 versus 2014)



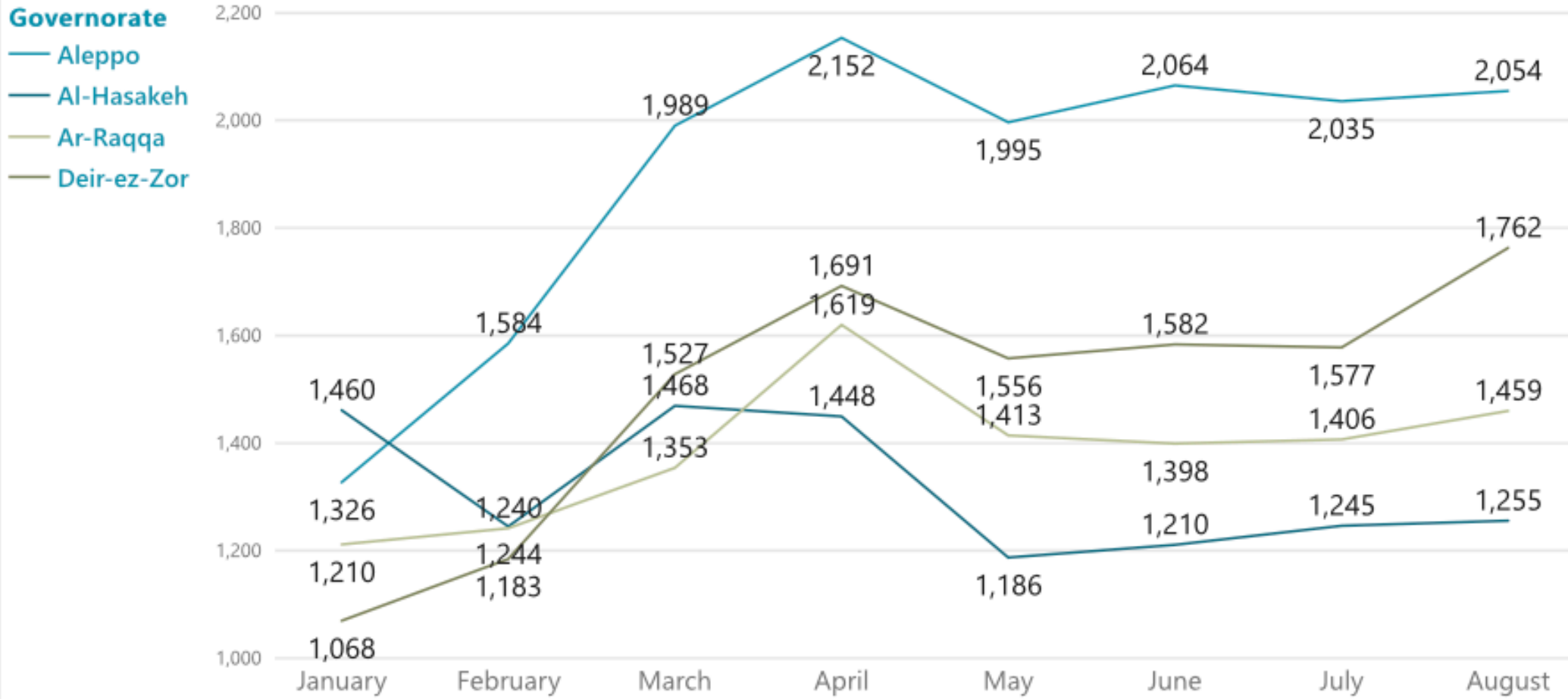
Source: Ministry of Agriculture and Agrarian Reform, moaar.gov.sy/main/archives/

Figure 9: Milk production 2011 versus 2014



Source: Ministry of Agriculture and Agrarian Reform, moaar.gov.sy/main/archives/

(WFP) Average Prices of Food Groups in SYP by Governorate



# Visualization

## Proposed Support

Development of templates

Maps

Dashboards

Infographics

Interactive Dashboards

Training sessions on how to update the products

## Wheat-to-Bread Processing Facilities Mapping

STUDY FOR NORTHEAST SYRIA, OCTOBER 2022<sup>1</sup>



### Introduction

To inform the bread programs in Northeast Syria (NES), IMMAP, in collaboration with the Food Security and Livelihood (FSL) Cluster and the Bakeries and Bread Coordination Group (BBCG) in NES, conducts a regular mapping and monitoring exercise of the processing facilities in the wheat-flour to bread value chain in NES. This exercise aims to:

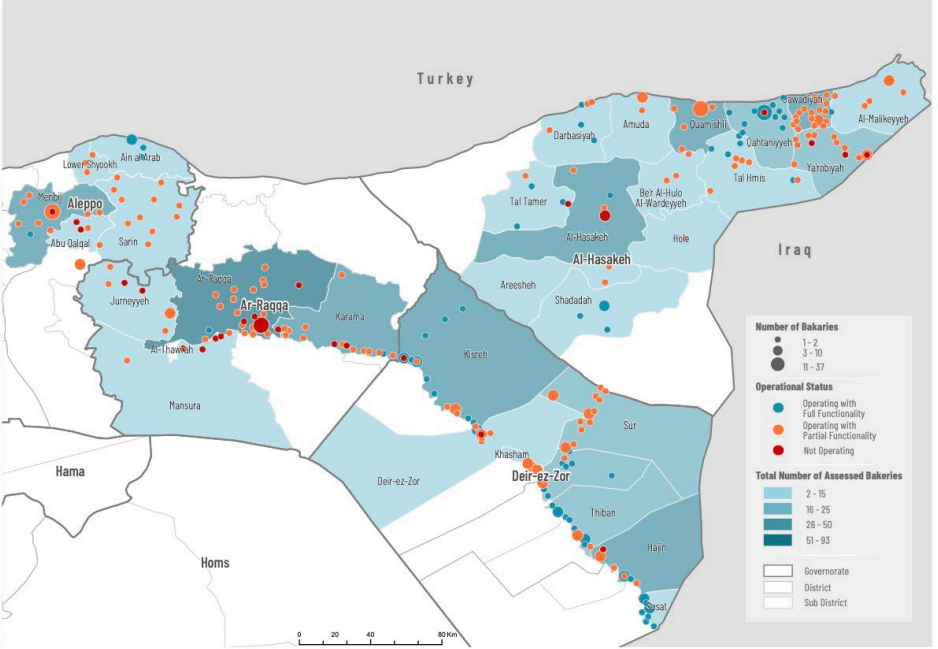
- Assess the capacity and functionality of wheat-flour to bread processing facilities in NES.
- Assess the accessibility and affordability of bread in NES.
- Identify existing gaps in bread production in NES to meet the bread needs of the local population.
- Identify the main bread production barriers and needed support to fill the gaps.

The first<sup>2</sup> round of the Wheat-flour to bread processing facilities mapping exercise in NES was conducted in August-September 2022. IMMAP's data collection partner and six NES FSL Cluster (NGO) partners conducted the data collection.

Thirty-one sub-districts were assessed across four governorates: 14 sub-districts in Al-Hasakah governorate, 8 sub-districts in Deir-az-Zor governorate, 5 sub-districts in Aleppo governorate, and 4 sub-districts in Ar-Raqa governorate. The total number of assessed facilities was 861 wheat-flour to bread processing facilities that were mapped in NES: 568 bakeries, 280 mills, and 33 silos.

### Key Findings

- Operational status of processing facilities**  
The percentage of reported operating bakeries was 83% (n=526) of all assessed bakeries, where 83% were private bakeries, 12% were publicly owned bakeries, and 5% had joint ownership (public and private). This percentage of operational bakeries slightly decreased compared to Q4 2021, where 84% of the assessed bakeries reported that they were operational. The remaining 7% (n=42) of bakeries were non-operational, out of which 60% of these bakeries were permanently closed.



Map 1: Bakeries Operational Status in NES, September 2022

<sup>1</sup> Data collection was conducted between mid-August and mid-September 2022, and the report was issued in October 2022.  
<sup>2</sup> Four rounds of Wheat-Flour to Bread Processing Facilities Mapping in NES have been published by IMMAP, one in 2020 and three in 2021. The latest November 2021 report for NES can be accessed through this [link](#).

## BREAD AND BAKERY DASHBOARD

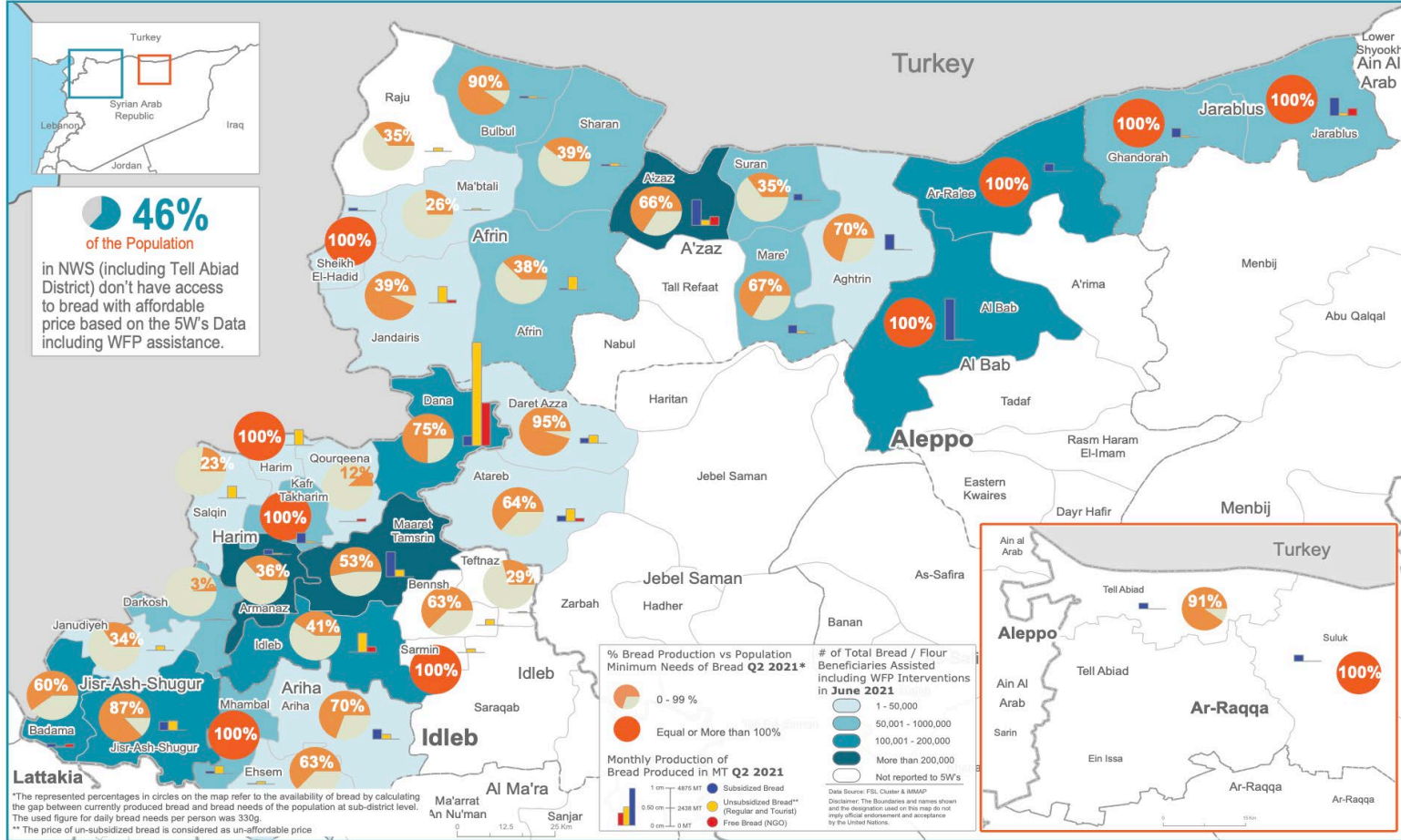
Northwest Syria Bread and Bakery Assistance

6 SEPTEMBER 2021



ISSUE #10 • PAGE 1/4

Reporting Period: JUNE 2021



<sup>1</sup> The represented percentages in circles on the map refer to the availability of bread by calculating the gap between currently produced bread and bread needs of the population at sub-district level. The used figure for daily bread needs per person was 330g.  
<sup>2</sup> The price of unadorned bread is considered as unaffordable price.

# Capacity Building Updates

## Upcoming Trainings

- Kobo ToolBox (November 24-24)
- MS Excel (December -12)
- Kobo ToolBox (December 8-9)
- MS Excel (December 15-16)

## Key Numbers



**120** participants registered overall

**30** participants per session

# Our Contacts

## **Country**

### **Representative:**

Fridon Japaridze  
fjaparidze@immap.org

## **IM Coordinator:**

Hesham Othman  
hothman@immap.org

## **Capacity Building Coordinator:**

Margarita Kondratovic  
mkondratovic@immap.org

## **Уповноважений представник по країні:**

Fridon Japaridze  
fjaparidze@immap.org

## **Координатор з Інформаційного Менеджменту:**

Hesham Othman  
hothman@immap.org

## **Координатор з тренінгової діяльності:**

Margarita Kondratovic  
mkondratovic@immap.org