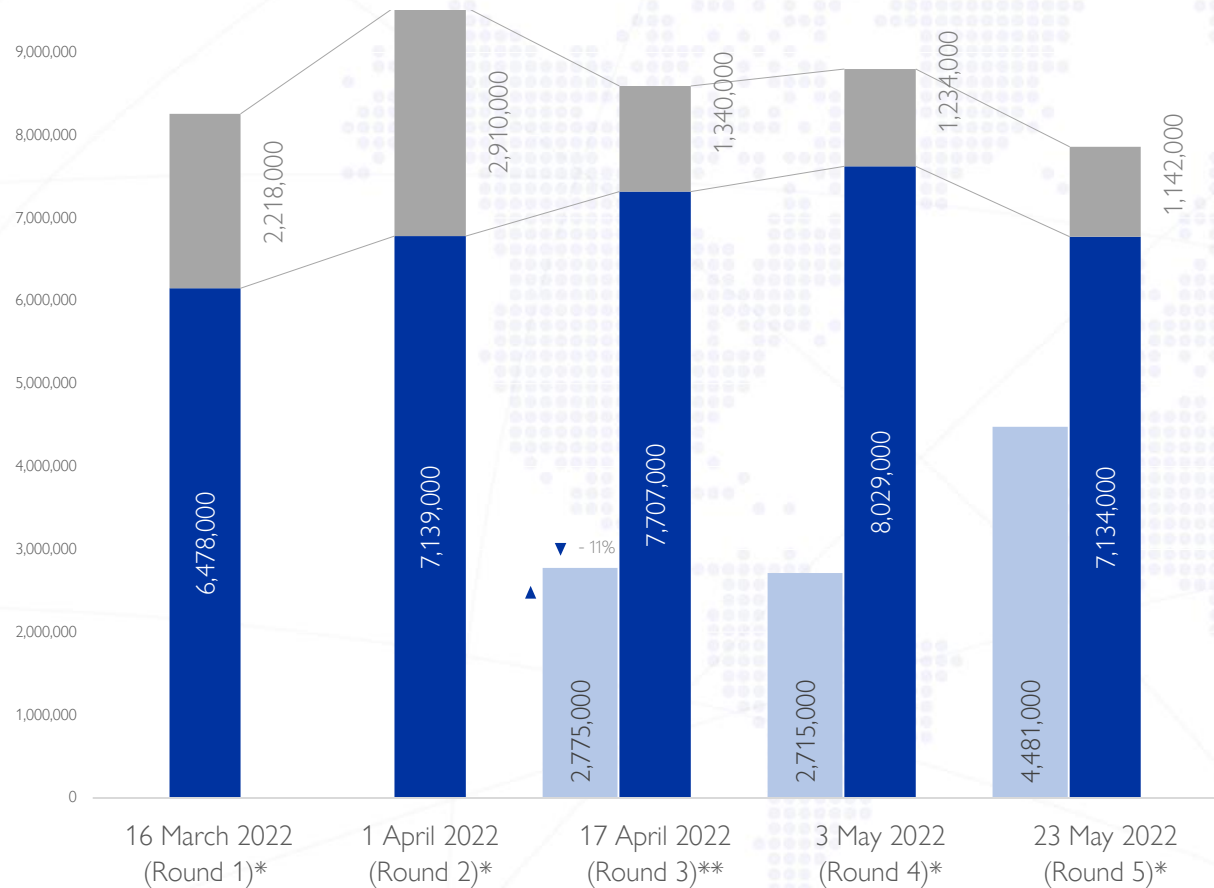


Ukraine IDP figures  
General Population Survey  
May 2022 – **ROUND 5**

*Data: 23/05/2022*

*Report publication: 30/5/2022*

**INTERNALLY DISPLACED PERSONS**



Actively **consider leaving** their place of habitual residence due to war (non-displaced population only)

**Est. IDPs in Ukraine**

**Est. returnees in Ukraine**

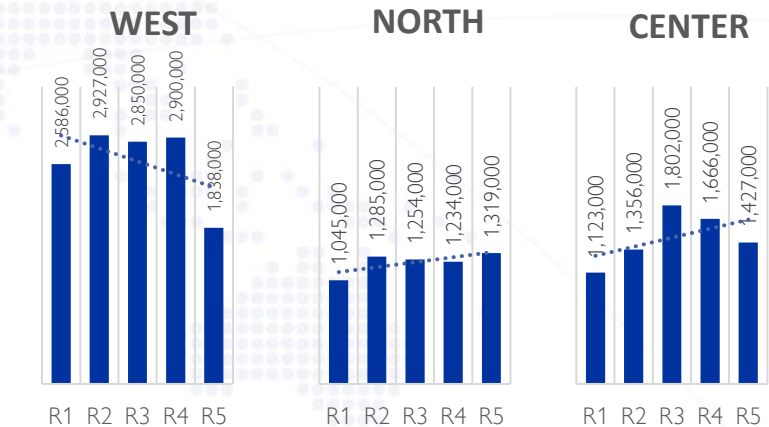
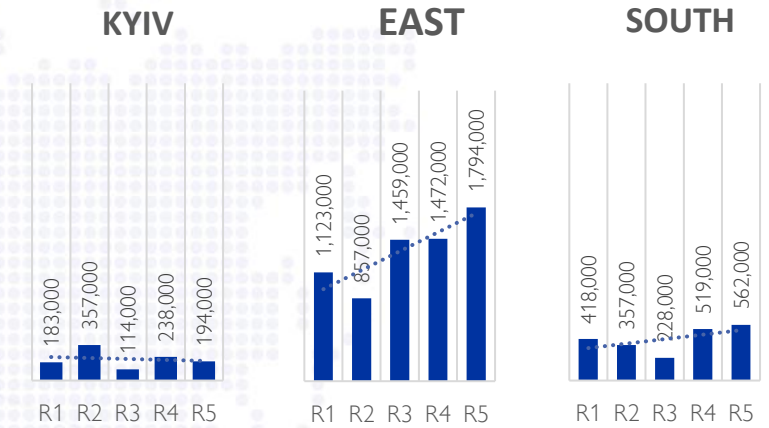
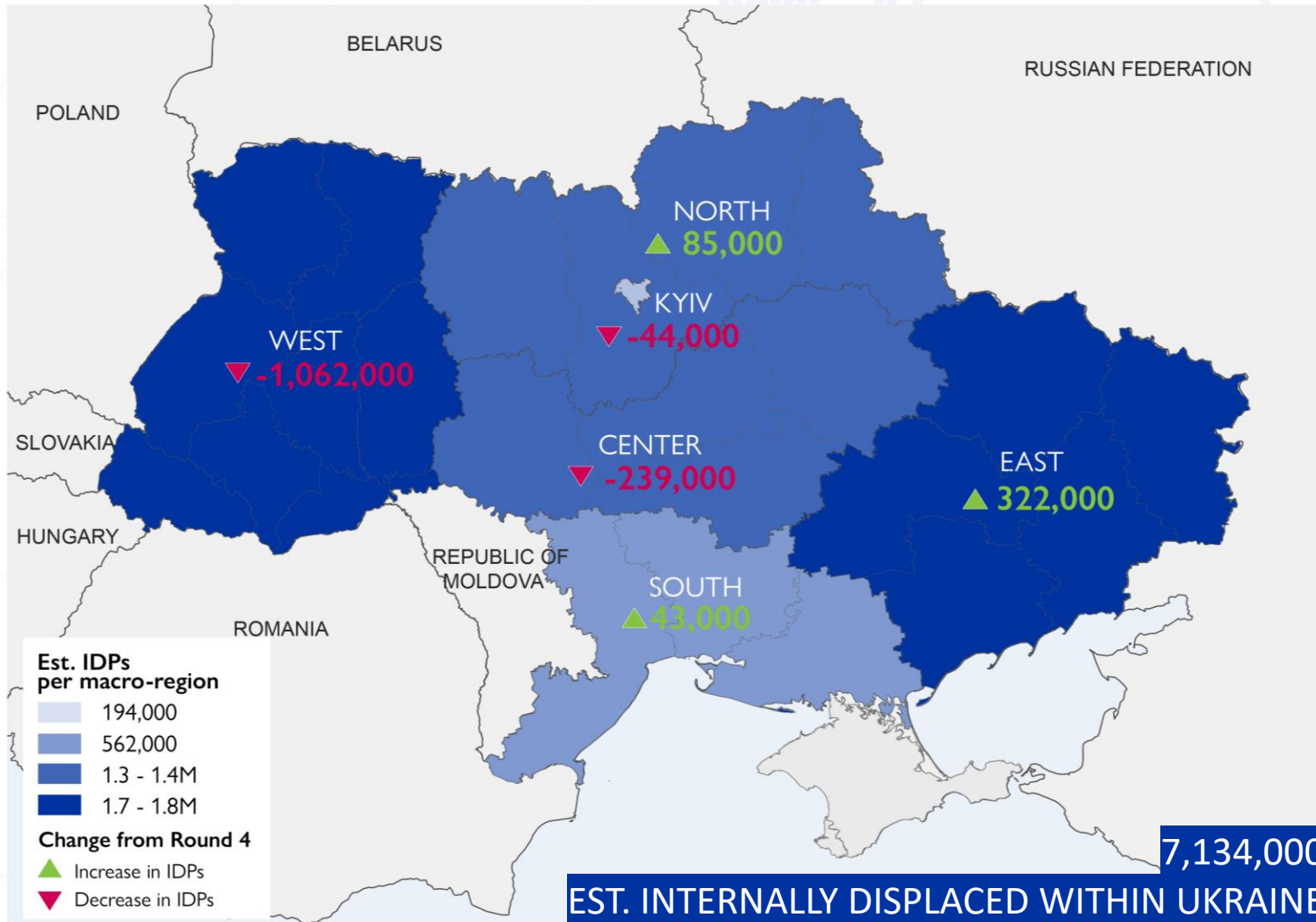
**7,134,000**  
EST. INTERNALLY  
DISPLACED  
WITHIN UKRAINE AS OF  
23 MAY 2022

Results of the general population survey show that, as of 23 May 2022, 16.2% of the general population were internally displaced within Ukraine, equivalent to over 7M individuals. This represents a decrease of nearly 900,000 IDPs (11%) since 3 May, a first estimated reduction in the number of IDPs in Ukraine since 24 February 2022.

\*All figures are now rounded to nearest 1,000.

\*\*Starting in Round 3, IOM made a slight adjustment to the estimation method for IDPs in Ukraine to increase the precision of the sampling frame and improve accuracy, while remaining within the original margin of error.

**ESTIMATED CURRENT LOCATION OF INTERNALLY DISPLACED PERSONS BY MACRO-REGION:**



**CHANGES IN ESTIMATED IDP PRESENCE PER MACRO-REGION (ROUNDS 1 TO 5)**

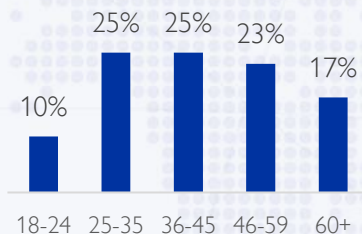
**INTERNALLY DISPLACED WITHIN UKRAINE: 7,134,000**

**DEMOGRAPHICS (IDPs)**

**SEX**  
**64% WOMEN** **36% MEN**

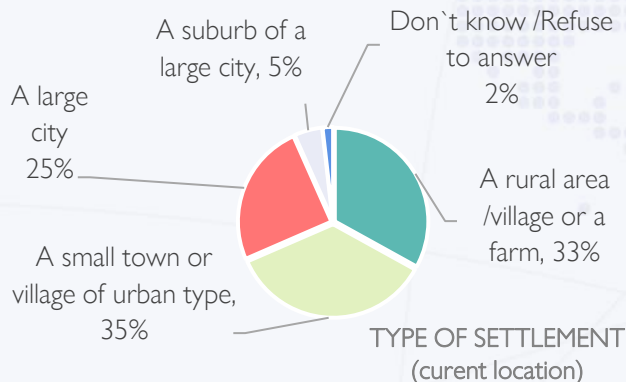
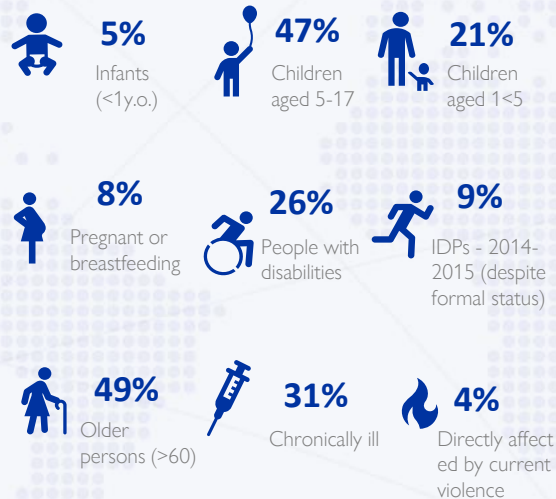
The share of men within the IDP population continues to shrink

**RESPONDENTS' AGE GROUP\***



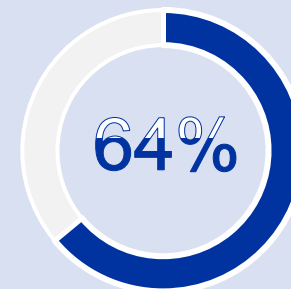
\*Only adults were interviewed for this survey

**SHARE OF IDP HOUSEHOLDS WITH VULNERABLE MEMBERS:** Share of IDPs who report one or more of their current household members fall within one of the following vulnerability categories (read as follows: “47% of IDP respondents indicated that at least one member of the family currently with them is a child between ages of 5 and 17):



The distribution of IDPs across types of settlements remains stable over time.

**IDP EMPLOYMENT**



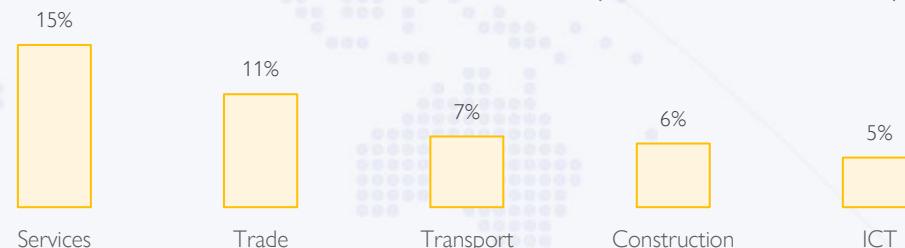
lost their jobs due to the war among those who were employed before the war.

Among those who did not lose jobs due to the war (34% IDPs), 51% continued to work remotely, and 43% were temporarily unemployed but planning to resume upon returning home. Another 6% of displaced people noted not working because they were retired, for medical reasons, or being on parental leave.

**Job search**

52%\* per cent of IDPs have attempted to find work in their location of displacement. Only 9% managed to find a new job as of 23 May.

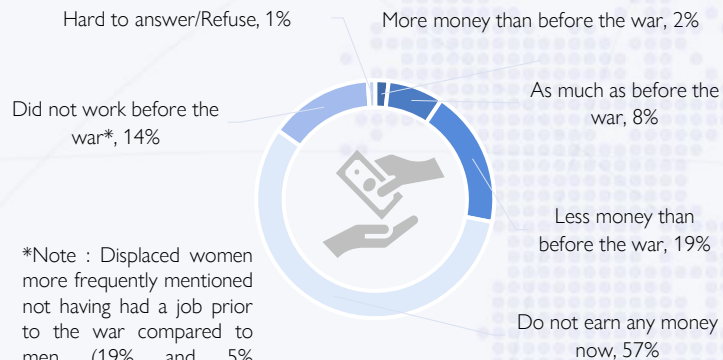
**Sectors for current and future job search (top five)**



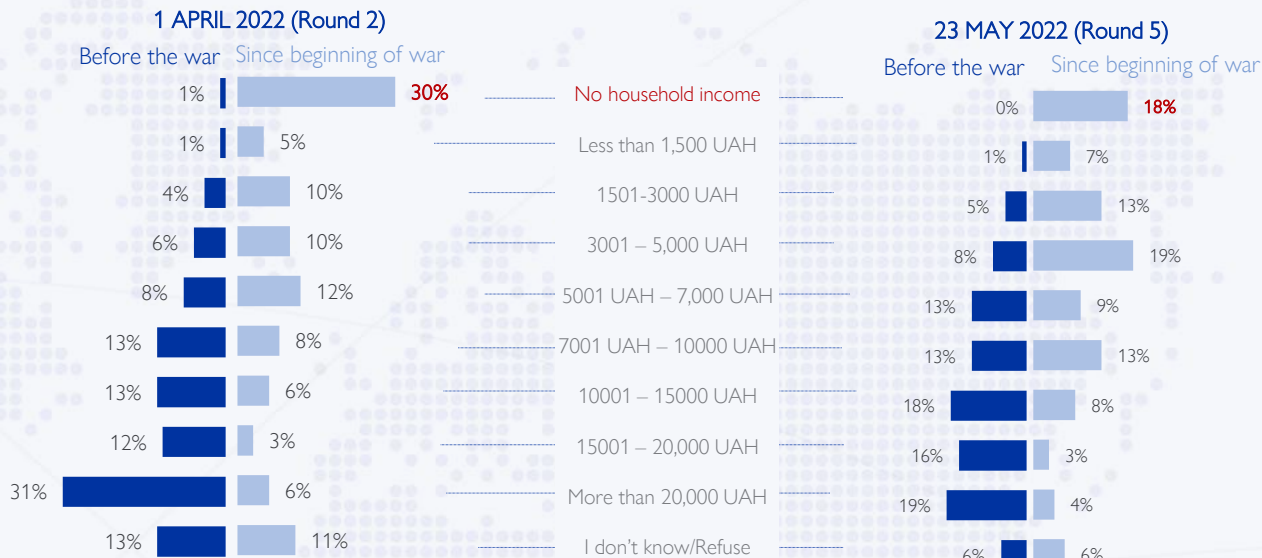
70% of those who did not search for a job or did not find it intended to do it in the future

## IDP INCOME AND LIVELIHOOD

How has your personal ability to earn income changed since start of the war?



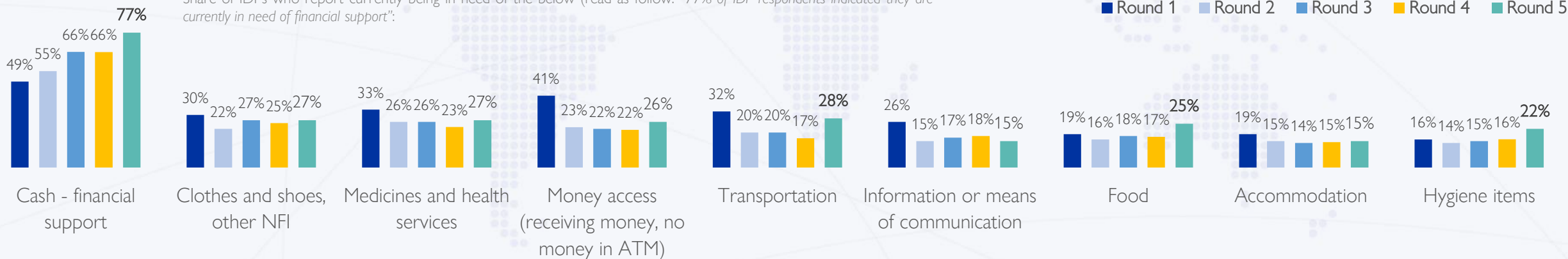
\*Note : Displaced women more frequently mentioned not having had a job prior to the war compared to men (19% and 5% respectively).



As of May 23, every fifth IDP interviewed noted that they had no income at all. Thirty-three (39%) per cent of respondents said the **income level of their households was no more than UAH 5,000 (≈ USD 166)**.

## IDP NEEDS over time

Share of IDPs who report currently being in need of the below (read as follow: "77% of IDP respondents indicated they are currently in need of financial support":



**SECTORAL NEEDS**

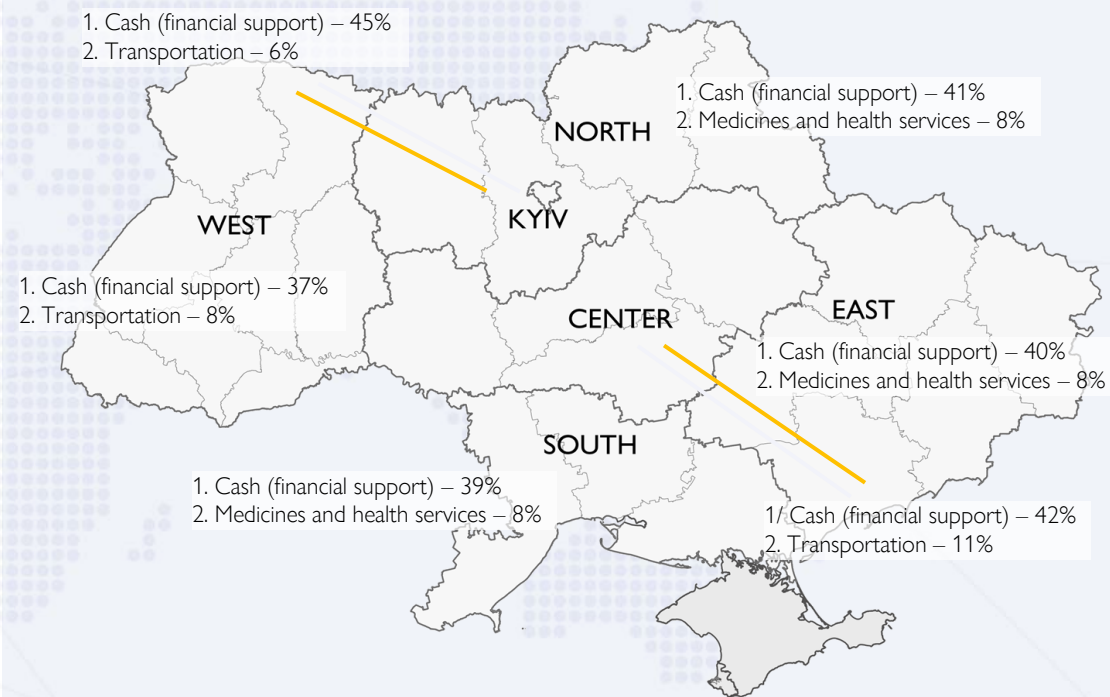
Pharmacies in current location	IDPs	Non-IDPs (incl returnees)	Returnees
All pharmacies open	65%	62%	42%
Some pharmacies open	11%	16%	29%
Very few pharmacies open	6%	5%	9%
No pharmacies are open	1%	2%	4%
No pharmacies in my area	9%	8%	5%
Hard to say/Refusal	8%	6%	11%

Damaged housing in habitual residence	IDPs	Non-IDPs (incl returnees)	Returnees
Yes	25%	5%	10%
No	65%	94%	88%
Hard to say/Refusal	10%	1%	2%

Child nutrition	IDPs	Non-IDPs (incl returnees)	Returnees
Yes	44%	25%	30%
No	55%	74%	68%
Hard to say/Refusal	1%	1%	3%

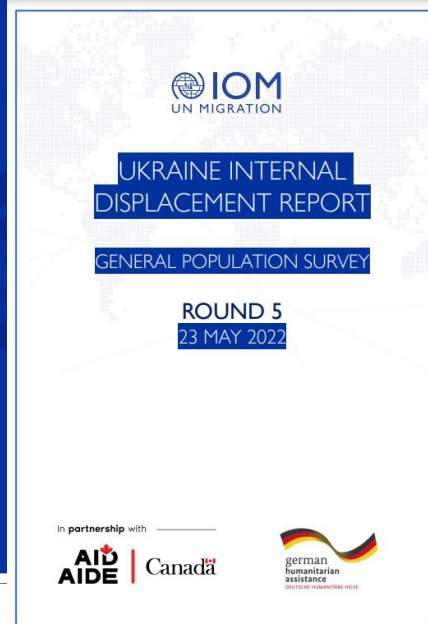
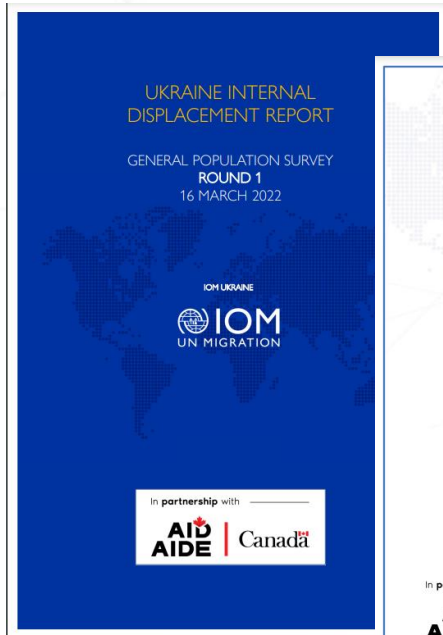
**TOP NEEDS PER MACRO-REGION (all respondents)**

Respondents were asked to identify their one most pressing need out of a randomly rotating list of options. Figures reported representing the share of respondents who selected the presented, most frequent choices per macro-region.



Data as of 23/05/2022

PRODUCTS DTM Ukraine DTMUkraine@iom.int



<https://displacement.iom.int/>  
<https://dtm.iom.int/>  
<https://ukraine.iom.int> -> data-and-resources

The data on recorded IDP presence at hromada level in Ukraine are available from IOM's Displacement Tracking Matrix Baseline Assessment ([HDX, registration required](#)).

*Thank you*

[DTMUkraine@iom.int](mailto:DTMUkraine@iom.int)