

For a world without hunger



# DELIVERING ASSISTANCE IN MALI, AMIDST ACCESS CHALLENGES, INCREASING NEEDS AND REDUCING FINANCIAL RESOURCES

Food Security Cluster – Global Partners Meeting

12/11/2023

Francesco De Pasquale

# DELIVERING ASSISTANCE IN MALI, AMIDST ACCESS CHALLENGES, INCREASING NEEDS AND REDUCING FINANCIAL RESOURCES



## # Topic

- 1 Context – Why is important talking about Mali?
- 2 Access constraints for people, humanitarian workers and impact on food security
- 3 How assistance can still be delivered?
- 4 Funding trends and perspectives

**CONTEXT:  
WHY IS IMPORTANT TALKING  
ABOUT MALI?**

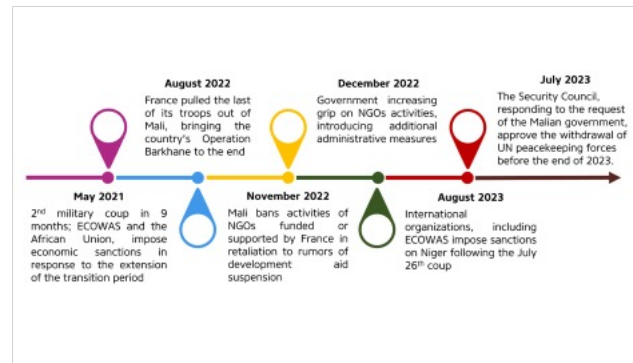
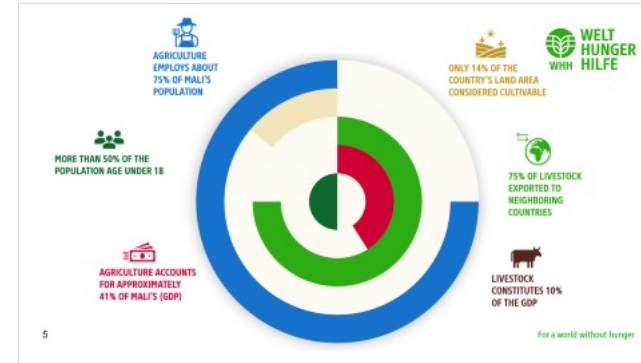


# CONTEXT – WHY IS IMPORTANT TALKING ABOUT MALI?

## “THE PERFECT STORM”



1. Economic landscape
2. Political & Security situation
3. Humanitarian needs overview





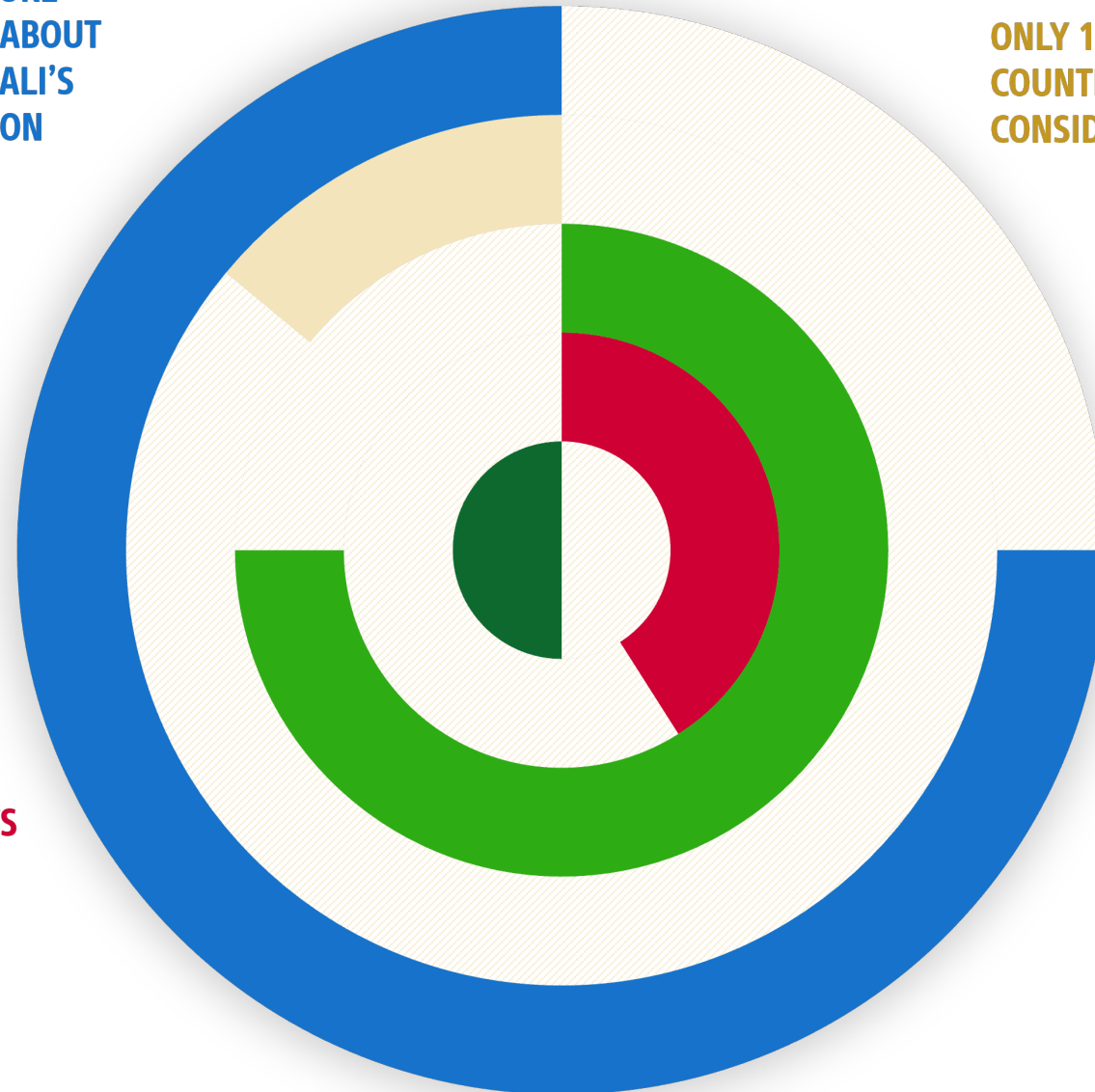
**AGRICULTURE  
EMPLOYS ABOUT  
75% OF MALI'S  
POPULATION**



**MORE THAN 50% OF THE  
POPULATION AGE UNDER 18**



**AGRICULTURE ACCOUNTS  
FOR APPROXIMATELY  
41% OF MALI'S (GDP)**



**ONLY 14% OF THE  
COUNTRY'S LAND AREA  
CONSIDERED CULTIVABLE**



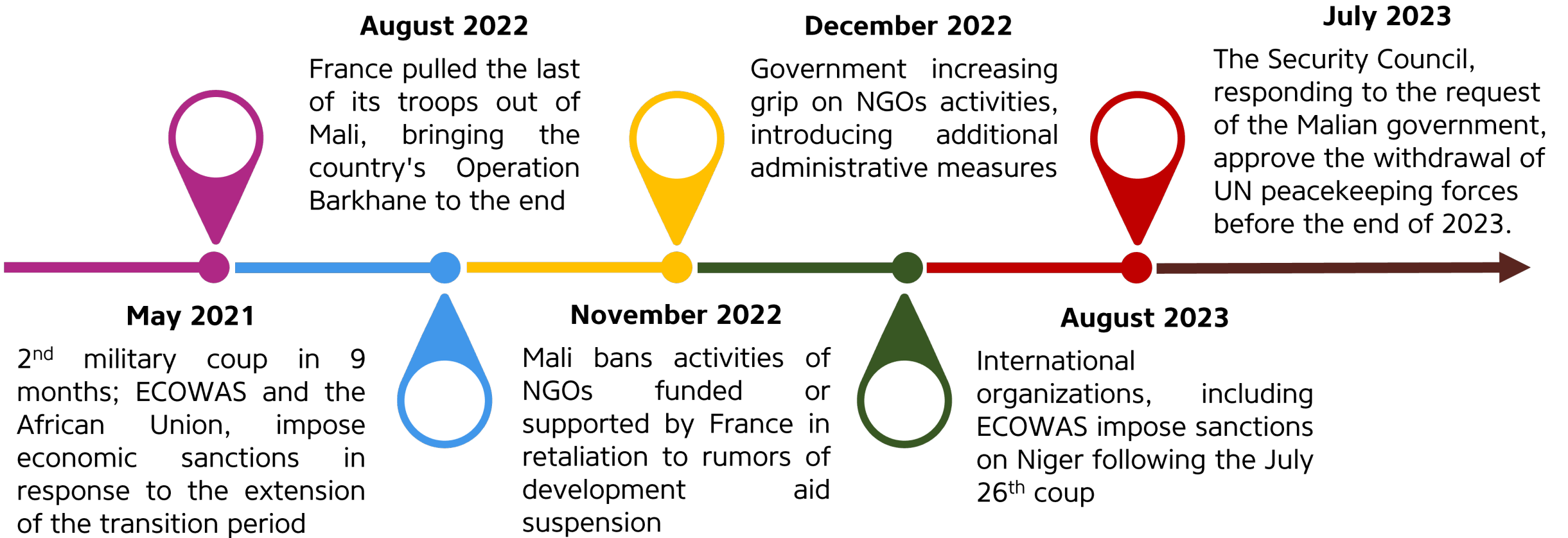
**WELT  
HUNGER  
HILFE**  
WHL

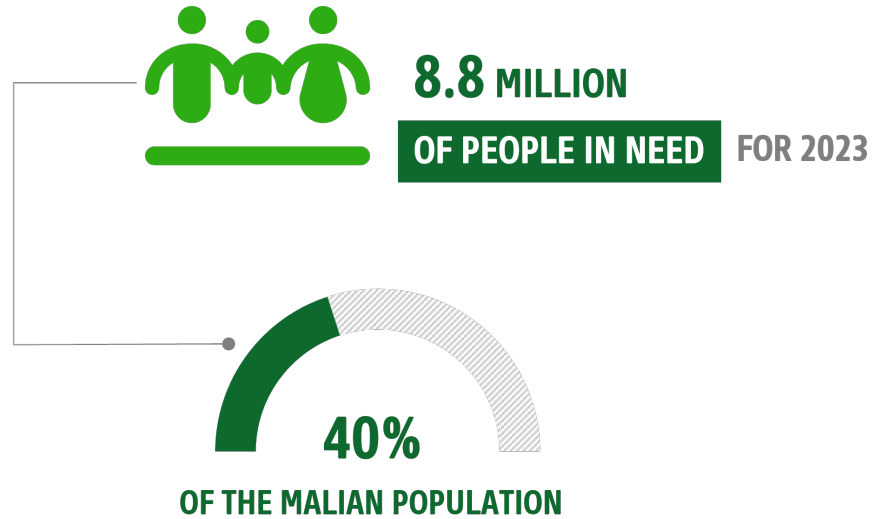


**75% OF LIVESTOCK  
EXPORTED TO  
NEIGHBORING  
COUNTRIES**

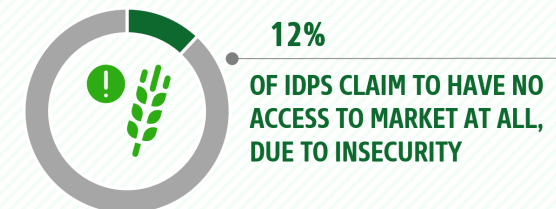
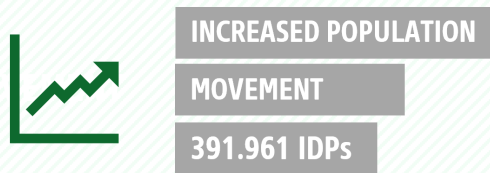


**LIVESTOCK  
CONSTITUTES 10%  
OF THE GDP**





ALARMING PRESENCE OF MALNUTRITION AMONG CHILDREN

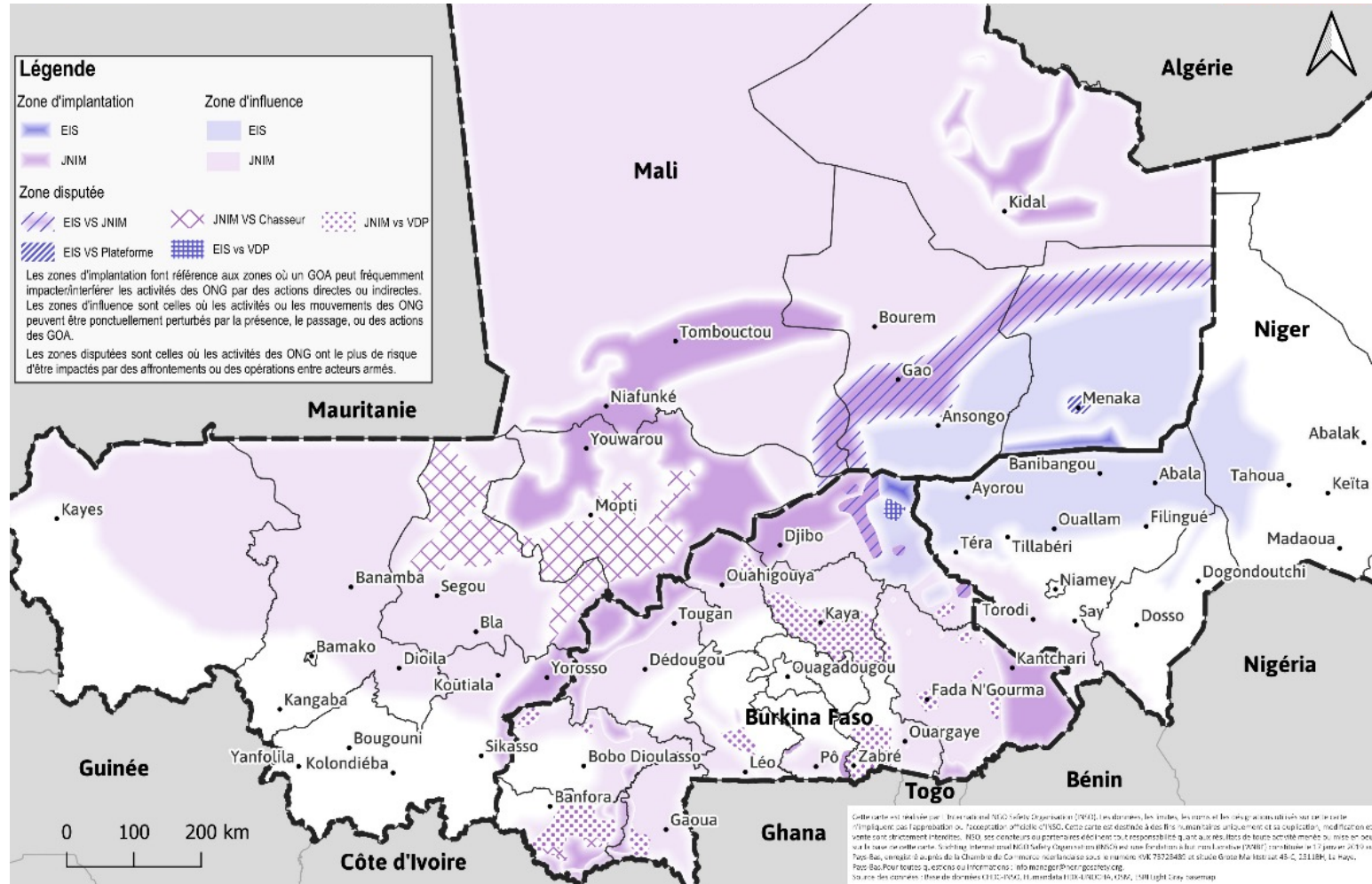


**ACCESS CONSTRAINTS FOR  
PEOPLE, HUMANITARIAN WORKERS  
AND IMPACT ON FOOD SECURITY**



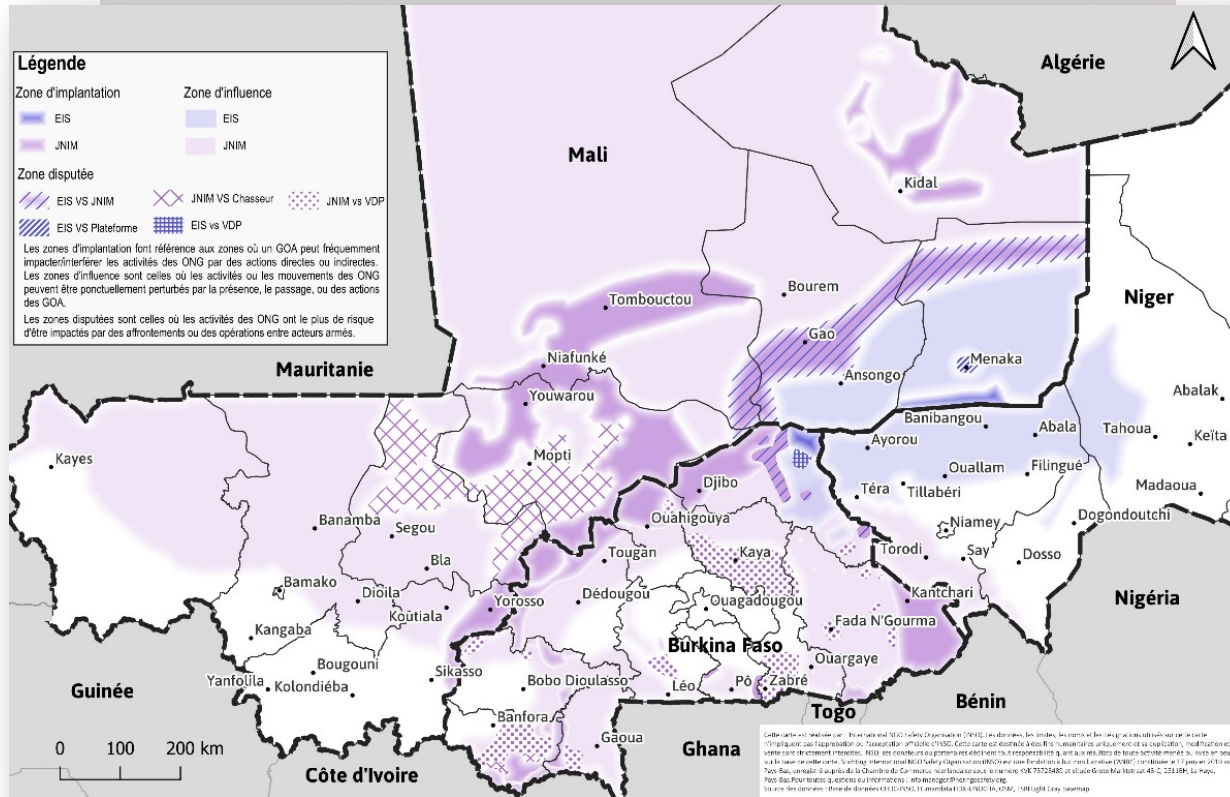


# ACCESS CONSTRAINTS – A SNAPSHOT ON THE NSAGs PRESENCE



Source : INSO, Radical Armed groups zones of influence in the Central Sahel in Q3 2023

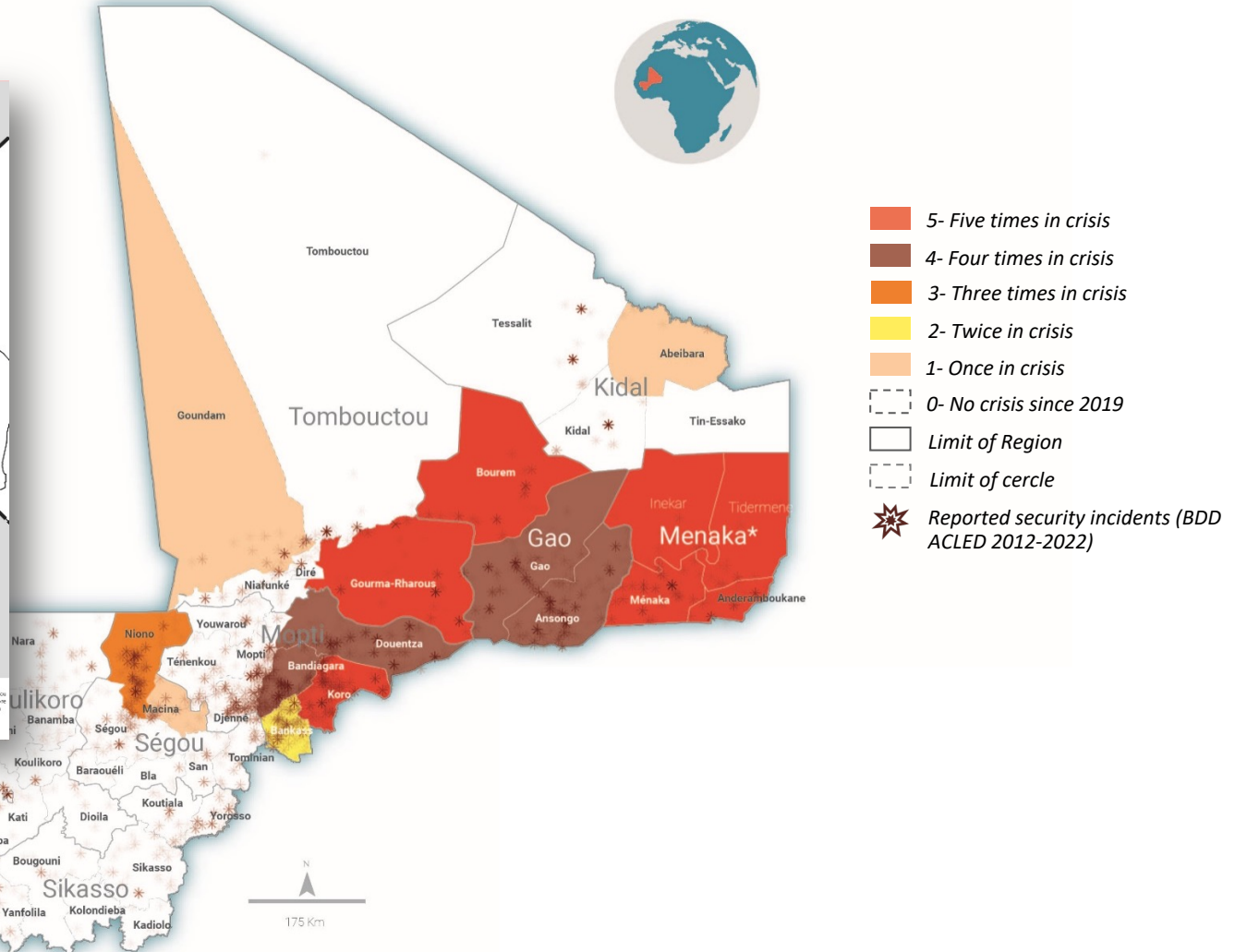
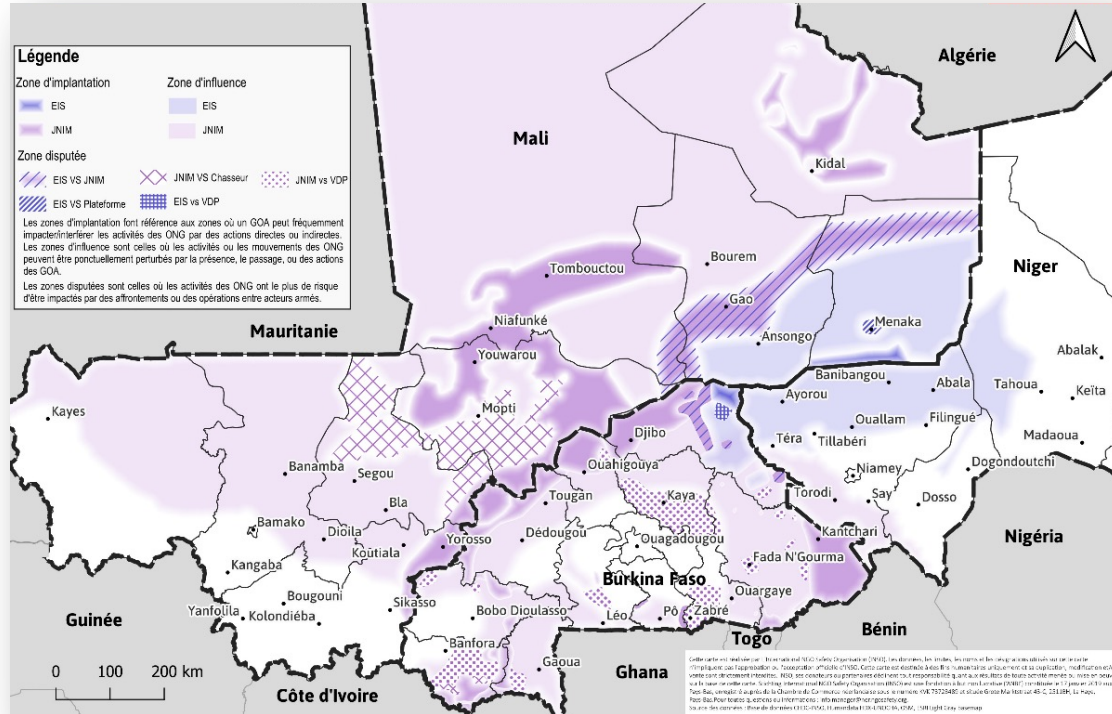
# ACCESS CONSTRAINTS – TRENDS OF CULTIVATED AREAS



→ 64% of localities shows a reduction of at least 25% in cultivated areas

→ Most affected regions: Mopti (81%), Ségou (77%), Timbuktu (61%)

# ACCESS CONSTRAINTS CHRONIC FOOD INSECURITY VS SECURITY INCIDENTS





**HOW ASSISTANCE CAN STILL BE  
DELIVERED?**

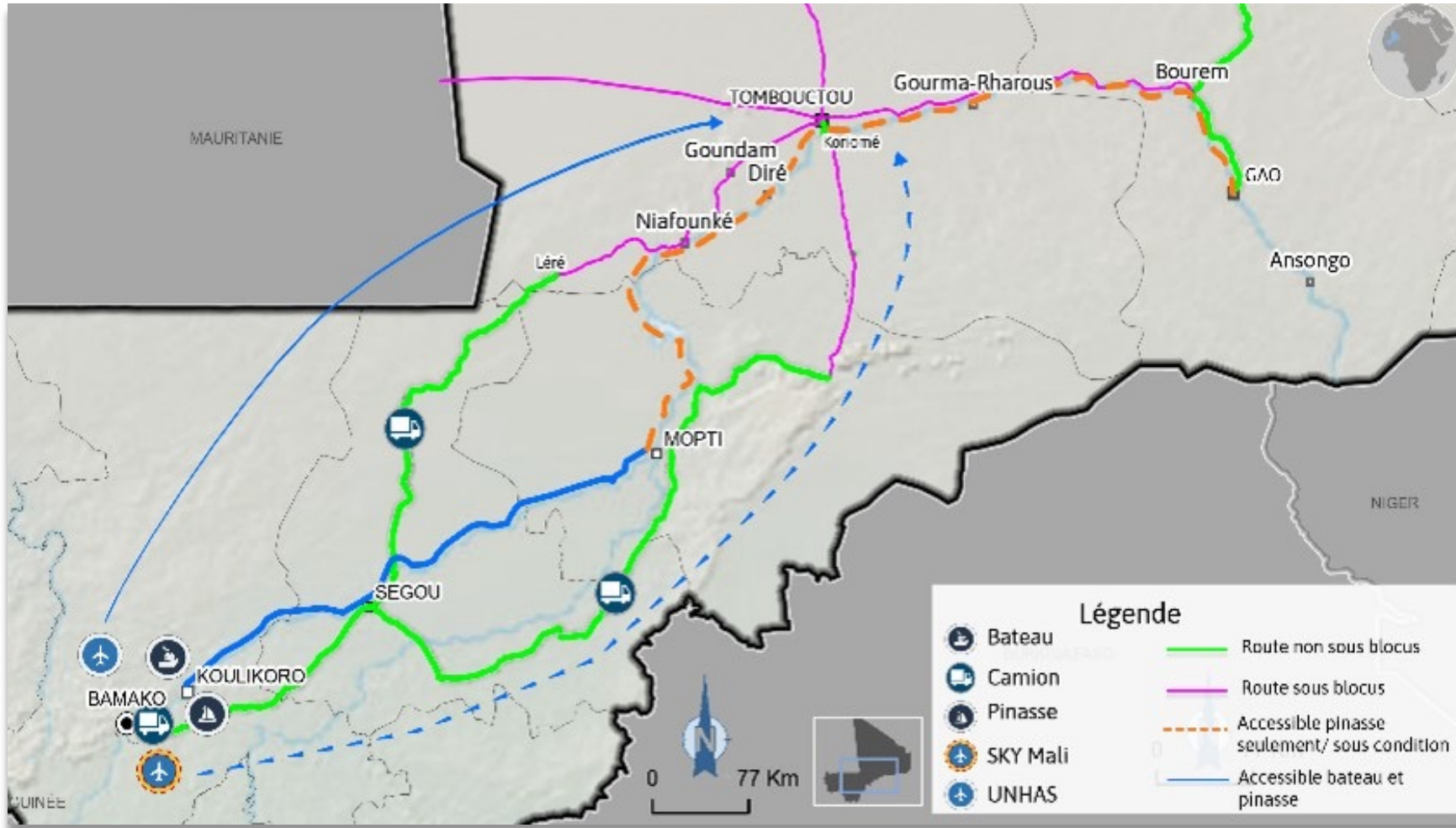


# HOW ASSISTANCE CAN STILL BE DELIVERED? KONNA



- Community engagement
- Staff profile
- Focus on the basic needs
- Humanitarian Principles
- Coordination
- Localization

# HOW ASSISTANCE CAN STILL BE DELIVERED? TIMBUKTU



The impact of the Timbuktu "blockade" on supply routes and movement of NGOs.

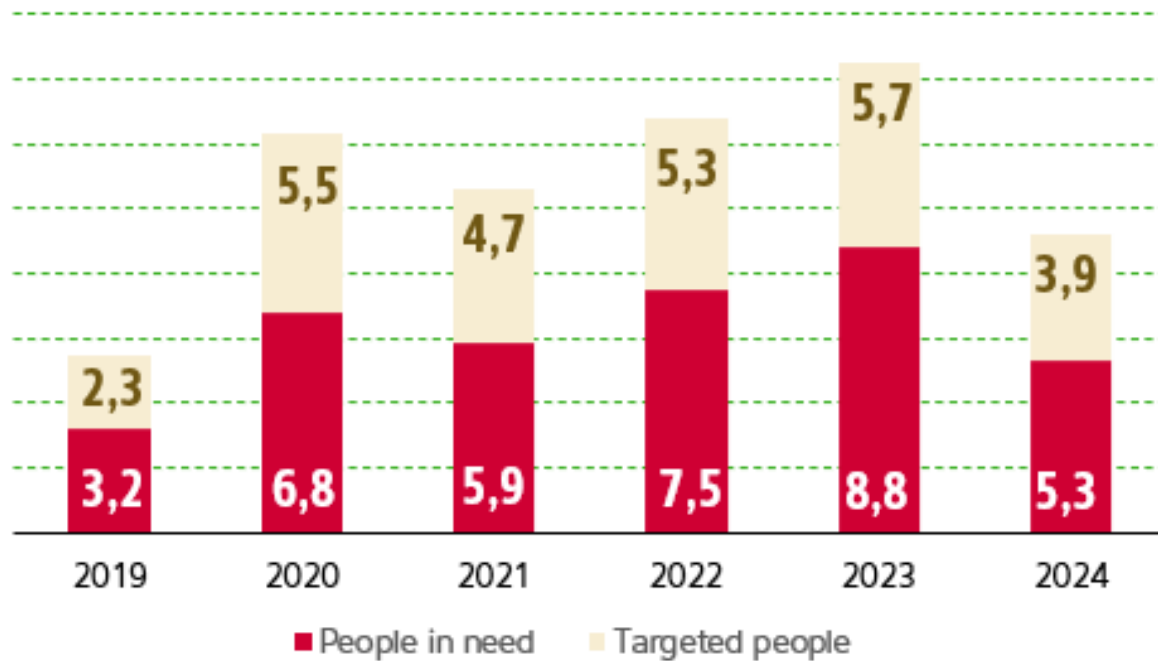
# FUNDING TRENDS AND PERSPECTIVES



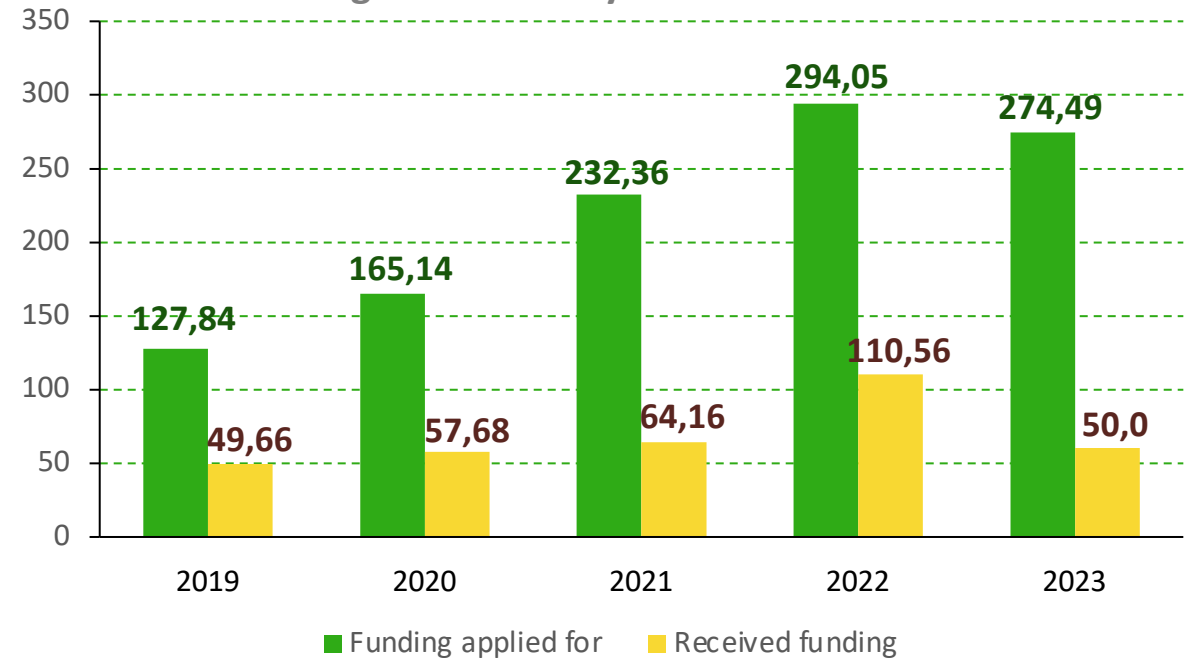


# FUNDING TRENDS AND PERSPECTIVES

PiN in million



Funding Food Security sector in Million USD



Source: Financial Tracking Service (FTS) |

# THANK YOU!

Francesco De Pasquale

Welthungerhilfe Mali

Francesco.DePasquale@whh.de



Photo: Haddad Toni / Welthungerhilfe

For a world without hunger