



@WFP/Hussam Al Saleh

### Highlights

o In February, the national average price of WFP’s standard reference food basket increased by two percent compared with January 2022, reaching SYP 231,004 (USD 92.4 at the official exchange rate of SYP 2,500/USD). This is the sixth consecutive month registering the highest ever recorded average price since monitoring started (2013).

o FAO’s Global Food Price Index averaged 140.7 points in February 2022, its highest ever recorded level, 3.1 points higher than the previous peak reached in February 2011.

o The Minimum Expenditure Basket in Syria covering 28 commodities, 20 of which food items, increased by 5.9 percent m-o-m and by 25.1 percent since September 2021.

o The Government of Syria updated its eligibility targeting criteria for Syrian households receiving subsidised commodities. The change has affected 15 percent of Syrian households (about 600,000 households) who will no longer be eligible to receive these subsidies.

o In February 2022, the Syrian pound’s informal exchange rate weakened by 1 percent, reaching SYP 3,634/USD. The Syrian pound’s informal exchange rate has depreciated by 11 percent since February 2021. The official exchange rate remains SYP 2,500/USD.

o For further information, please contact:

Jan Michiels at [Jan.Michiels@wfp.org](mailto:Jan.Michiels@wfp.org)

Moammar Alhosaen at [Moammar.Alhosaen@wfp.org](mailto:Moammar.Alhosaen@wfp.org)

### Standard Food Basket

In February 2022, the national average price of a standard reference food basket<sup>1</sup> increased by two percent since January 2022, reaching SYP 231,004. The national average food basket price was 34 percent higher than that of August 2021 (six months ago) and 71 percent higher compared to February 2021 (Figure 1). February marked the highest ever recorded monthly average reference food basket price since monitoring started in 2013, representing the sixth consecutive month with record levels for the national average reference food basket price.

Month-on-month (m-o-m), 10 governorates recorded an increasing average reference food basket price in February 2022. Idleb remains the governorate with the highest average food basket price at SYP 257,890, down one percent m-o-m while Al-Hasakeh remains the governorate reporting the lowest average price at SYP 210,643 up two percent m-o-m.

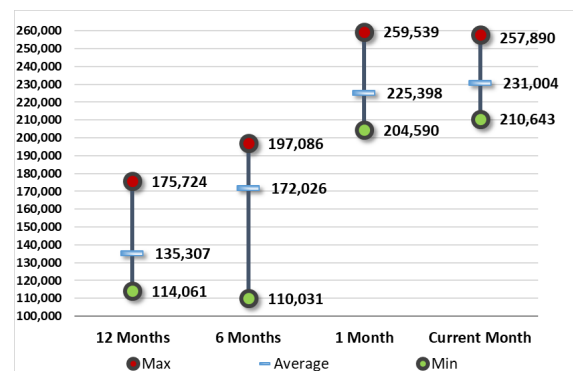
The highest m-o-m increase of six percent was reported in Rural Damascus, Damascus and Deir-ez-Zor, where the price of the basket reached SYP 233,501, SYP 231,541, and SYP 217,798, respectively. The lowest m-o-m increase (minus one percent) was reported in Idleb, Tartous, and Hama where the price of the basket reached SYP 257,890, SYP 251,138, and SYP 223,916, respectively. Lattakia’s average reference food basket price remained unchanged m-o-m at SYP 225,786 (Figure 1).

Year-on-year (y-o-y), the price of the reference food basket has significantly increased across all 14 governorates. Dar’a recorded the highest increase (up 111 percent), while Idleb recorded the lowest increase (up 72 percent) - Chart 1.

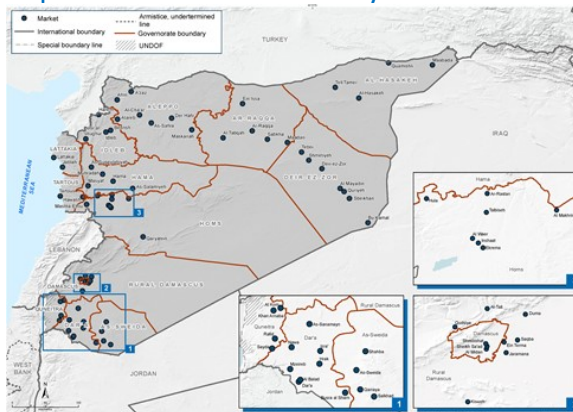
Figure 1: Food basket cost and changes, SYP

Governorate	Price February 2022	1 month change	6 months changes	12 months changes
Aleppo	SYP 230,840	5%	33%	60%
Damascus	SYP 231,541	6%	31%	88%
Dar'a	SYP 244,499	3%	37%	88%
Deir-ez-Zor	SYP 217,798	6%	35%	91%
Hama	SYP 223,916	-1%	27%	66%
Al-Hasakeh	SYP 210,643	2%	51%	75%
Homs	SYP 219,769	3%	25%	62%
Idleb	SYP 257,890	-1%	31%	47%
Lattakia	SYP 225,786	0%	27%	52%
Ar-Raqqa	SYP 232,695	2%	29%	76%
Rural Damascus	SYP 233,501	6%	31%	88%
As-Sweida	SYP 218,809	2%	28%	62%
Tartous	SYP 251,138	-1%	47%	80%
Quneitra	SYP 235,232	3%	29%	71%
Average	SYP 231,004	2%	33%	71%

Chart 1: National min., max. and average food basket cost, SYP



Map 1: Location of markets monitored by WFP



1. The standard food basket is a group of essential food commodities. In Syria, the food basket is set at a group of dry goods providing 2,060 kcal a day for a family of five during a month. The basket includes 37 kg bread, 19 kg rice, 19 kg lentils, 5 kg of sugar, and 7 litres of vegetable oil.

# Government of Syria changes eligibility criteria for subsidies

## Overview and composition

On the first of February 2022, the Government of Syria modified the eligibility criteria for Syrian citizens to receive government subsidised items on the smart card system. The Government of Syria mentioned that the change has affected 15 percent of Syrian households (about 600,000 households) registered on the smart card system while other sources estimate that around 21 percent of the people previously on the smart card system could be excluded from receiving subsidised items based on the new eligibility criteria<sup>2</sup>.

The Assistant Minister of Communications and Technology, Eng. Fadia Suleiman, outlined that the reason for reorganizing and re-arranging the government support is to direct the subsidized items to the most deserving segments in society. Mrs Suleiman further confirmed that the subsidy exclusion criteria was based on a household's wealth, property and income level. Key exclusion criteria are as follows: owners of a private car with an engine of more than 1,500 cc and car model of 2008 and later will be excluded from receiving the subsidized oil derivatives. The exclusion criteria is also extended to households who own more than one car; large and medium taxpayers, importers and exporters, founders of private banks and exchange companies, owners of first and excellent commercial records, owners of universities and private schools, gas stations, private bakeries, and owners of quarries, driving schools, shipping agents, technical inspection centres and others who have economic activities that generate a stable income that reflects their ability to support their families without government support will also be excluded. The exclusion criteria is also extended to people who have left Syria. The databases were also updated to remove the deceased<sup>3</sup>.

The series of changes come at a time when Syria is going through one of the worst economic crises in its recorded history. It is now 11 years since the conflict in Syria started, displacing an estimated 6.9 million people within Syria. A joint UN-NGO report finds that there are now an estimated 12 million food insecure people in Syria (55.3 percent of the population) and 14.6 million people (67.3 percent of the population) are in need of humanitarian assistance<sup>4</sup>.

## Worldwide food price and inflation trend

The United Nations Food and Agriculture Organization's Food Price Index, an index tracking monthly changes in the international prices of commonly-traded food commodities, has outlined an increasing index since mid-2020 (Charts 2). FAO's Food Price Index average 140.7 points in February 2022, its highest ever recorded level, 3.1 points higher than the previous peak reached in February 2011<sup>5</sup>.

The FAO Food Price Index rose by 3.9 percent in February 2022 m-o-m and 20.7 percent y-o-y, pushed up by more expensive vegetable oils, dairy and high wheat prices among other commodities (Chart 3). The Vegetable Oils Price Index increased by 8.5 percent from the previous month to reach a new record high, mostly driven by increased quotations for palm, soy and sunflower oils. The sharp increase was driven by sustained global import demand, which coincided with a few supply-side factors, including reduced export availabilities of palm oil from Indonesia, the world's leading exporter, lower soybean production prospects in South America, and concerns about lower sunflower oil exports due to disruptions in the Black Sea region.

Unfavorable weather for crops and the ramifications on food supplies and energy prices threaten to keep prices rising higher in the months ahead. As Chart 4 demonstrates food contributes heavily (33 percent of the EM median) to the consumer price index (CPI) of many emerging markets (EM). The share of food in developed markets (DM) is less pronounced (six percent of the DM median)<sup>6</sup>.

In February 2022 many countries saw their inflation rates rise higher than the high levels already recorded a month earlier<sup>7</sup>. The Euro-area's annual inflation rate stood at 5.8 percent in February up from 5.1 percent in January 2022. The United States of America's annual inflation rate stood at 7.9 percent in February up from 7.5 percent in January 2022. Turkey's annual inflation rate stood at 54.7 percent in February up from 48.7 percent in January 2022. Lebanon's annual inflation rate stood at a record high 240 percent in February up from 224 percent in January 2022.

Charts 2 & 3: FAO Food Price Index since 2019 & overview by item in 2022

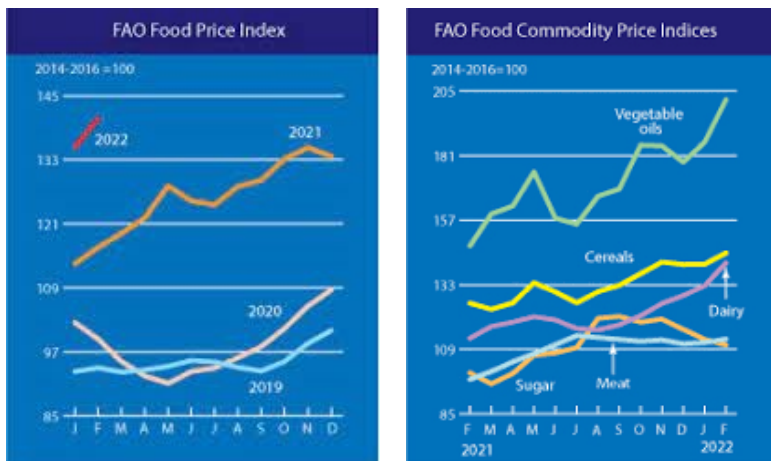
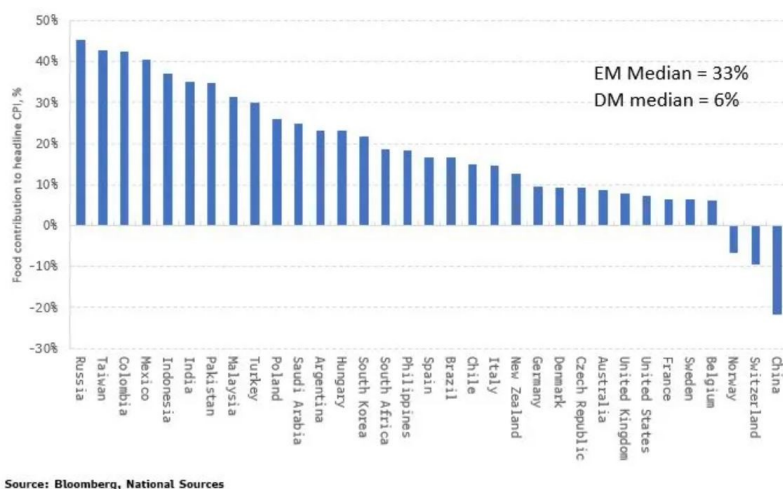


Chart 4: Food contributing 30-40 percent to headline CPI in some EMs



<sup>2</sup> <https://shaamtimes.net/379575/3-%D9%85%D9%84%D8%A7%D9%8A%D9%8A%D9%86-%D8%B3%D9%88%D8%B1%D9%8A-%D8%A7%D8%B3%D8%AA%D9%81%D8%A7%D9%82%D9%88%D8%A7-%D8%B9%D9%84%D9%89-%D8%B1%D9%81%D8%B9-%D8%A7%D9%84%D8%AF%D8%B9%D9%85-%D8%A7%D9%84%D8%A7%D8%AA-%D8%A7%D9%84%D8%AE%D8%A7%D8%B5%D8%A9-%D9%88%D8%A3%D9%83%D8%AB%D8%B1-%D9%85%D9%86-500-%D8%A3%D9%84%D9%81-%D8%A8%D8%B7%D8%A7%D9%82%D8%A9/%D8%A3%D8%AB%D8%B1-%D9%85%D8%AD%D9%84%D9%8A/>

<sup>3</sup> "Initially 47% Of Private Cars And More Than 500,000 Cards Will Be Excluded From The Support" <https://www.athrpress.com/47-%D9%85%D9%86-%D8%A7%D9%84%D8%B3%D9%8A%D8%A7%D8%B1%D8%A7%D8%AA-%D8%A7%D9%84%D8%AE%D8%A7%D8%B5%D8%A9-%D9%88%D8%A3%D9%83%D8%AB%D8%B1-%D9%85%D9%86-500-%D8%A3%D9%84%D9%81-%D8%A8%D8%B7%D8%A7%D9%82%D8%A9/%D8%A3%D8%AB%D8%B1-%D9%85%D8%AD%D9%84%D9%8A/>

<sup>4</sup> "2022 Humanitarian Needs Overview: Syrian Arab Republic (February 2022)" <https://reliefweb.int/report/syrian-arab-republic/2022-humanitarian-needs-overview-syrian-arab-republic-february-2022>

<sup>5</sup> FAO "FAO Food Price Index rises to record high in February" <https://www.fao.org/newsroom/detail/fao-food-price-index-rises-to-record-high-in-february/en#:..:text=The%20FAO%20Food%20Price%20Index,of%20commonly%20traded%20food%20commodities.>

<sup>6</sup> Aljazeera "Soaring food prices threaten emerging-market currencies" <https://www.aljazeera.com/economy/2022/3/7/soaring-food-prices-threaten-emerging-market-currencies>

<sup>7</sup> Trading Economics "Inflation Rate" <https://tradingeconomics.com/country-list/inflation-rate?continent=asia>

**Table 1: Prices of key COVID-19 items, week-on-week in February 2022, SYP**

National average	Week 1 (SYP)	Week 2 (SYP)	Week 3 (SYP)	Week 4 (SYP)	% Change (Feb W4 & W1)
Surgeon mask	394	395	397	398	1%
Gloves (pair)	791	792	795	802	1%
Alcohol spray (200 ml)	2,748	2,725	2,748	2,751	0%
Bleach bottle (L)	1,679	1,711	1,716	1,712	2%
Hand gel (50 ml)	1,227	1,252	1,285	1,278	4%
Soap bar	680	687	701	701	3%

## COVID-19 NFIs

Between January and February 2022, the price of all monitored COVID-19 items increased except for surgeon masks and alcohol spray. M-o-m, the price of soap bars increased by four percent (reaching SYP 692/bar), for gloves the price increased by three percent (reaching SYP 795/pair), and for bleach the price increased by one percent (reaching SYP 1,705/litre). While for hand gel the price remained unchanged at SYP 1,260. Instead, the price of surgeon masks and alcohol spray decreased by one percent m-o-m, reaching SYP 396/mask and SYP 2,743/200 ml.

Compared to February 2021, the price of all COVID-19 items increased. The price of plastic gloves, soap bars and alcohol spray increased by 118, 59 and 50 percent, respectively. Moreover, the price of bleach, hand gel and surgeon masks increased by 35, 23 and nine percent, respectively.

Additionally, in February 2022 the price of all items significantly increased compared to February 2020 (prior to the COVID-19 outbreak in Syria). For example the price of plastic gloves, alcohol spray and hand gel increased by 1,086, 556 and 423 percent, respectively. Also, the price of surgeon masks, soap bars and bleach increased by 401, 365 and 310 percent, respectively—Table 2.

## Minimum Expenditure Basket

### MEB Trend

In February 2022, the national average MEB (Damascus Cash Working Group) for a household of five members was recorded at SYP 647,483 (US \$259), up 5.9 percent m-o-m and up 25.1 percent since September 2021. The rate of increase fluctuates considerably between months with a high of 8 percent recorded in October 2021 and a low of 1.4 percent recorded in December 2021.

On average, since monitoring of this MEB started (September 2021), the value of the MEB has increased by around SYP 25,966 per month representing around a 4.4 percent increase on a monthly basis (Chart 5).

The breakdown by category of MEB price changes since January 2022 are as follows: fruits and vegetables (up 20 percent), followed by potatoes (up seven percent) sugar (up five percent), cereals, vegetable oil and fuel (up four percent), hygiene items, and pulses (up three percent), animal protein and dairy products (up one percent) and communication costs (no change).

### Price of vegetable oil

M-o-m, the national average retail price of vegetable oil throughout Syria decreased by four percent, reaching SYP 8,480/litre in February 2022. Compared to August 2021 the price of vegetable oil increased by 19 percent and by 51 percent y-o-y. Tartous recorded the highest vegetable oil price at SYP 9,399/litre (up one percent m-o-m), while Al-Hasakeh recorded the lowest price at SYP 6,321/litre (unchanged m-o-m).

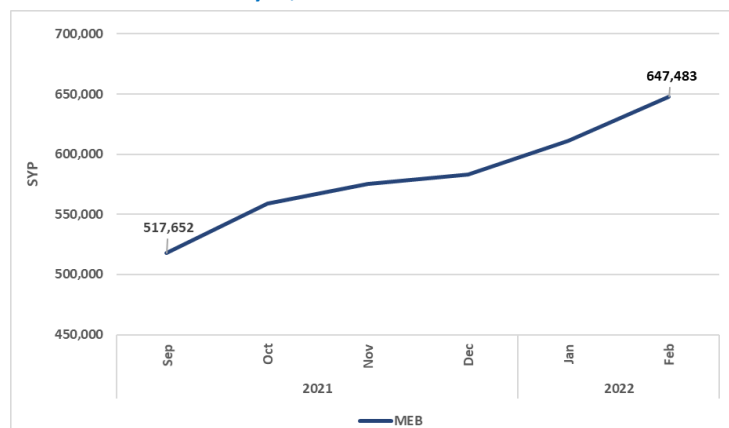
Broken down by region, the Northwest region reported the highest price at SYP 9,378/litre (up 10 percent m-o-m), followed by the Southern region at SYP 9,236/litre (up five percent m-o-m). The Cross-border region reported the lowest price of vegetable oil at SYP 6,768/litre (up one percent m-o-m), followed by the Northeast region of Syria at SYP 7,280 (up one percent m-o-m) - Chart 6.

**Table 2: Monthly price changes of key COVID-19 items, SYP**

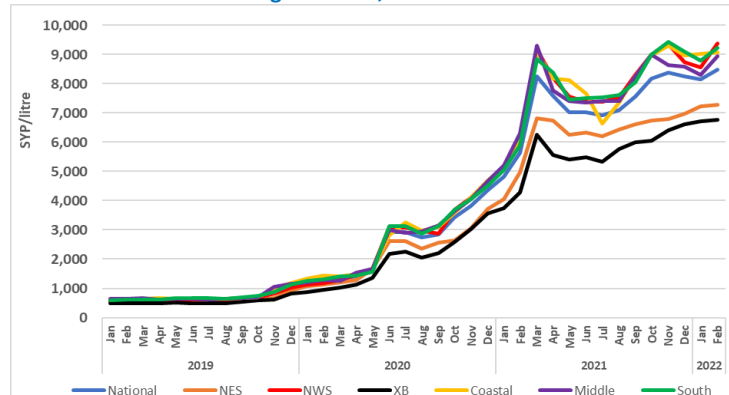
National average	Feb-20 (SYP)	Feb-22 (SYP)	% Change
Surgeon mask	79	396	401%
Gloves (pair)	67	795	1,086%
Alcohol spray (200 ml)	418	2,743	556%
Bleach bottle (L)	416	1,705	310%
Hand gel (50 ml)	241	1,260	423%
Soap bar	149	692	365%

Source: WFP

**Chart 5: MEB Trend in Syria, SYP**



**Chart 6: Retail Prices of Vegetable Oil, SYP**



Source: WFP



**Legend on regions of analysis:** 'Northwest'=Aleppo; 'Cross-border'=Idleb & Aleppo [A'zaz, Atarib & Afrin]; 'Coastal'=Lattakia & Tartous; 'Northeast'=Ar-Raqqa, Al-Hasakeh & Deir-ez-Zor; 'Middle'=Hama, Homs and Idleb [Senjar]; 'South'=Damascus, Rural Damascus, Dar'a, As-Sweida & Quneitra.

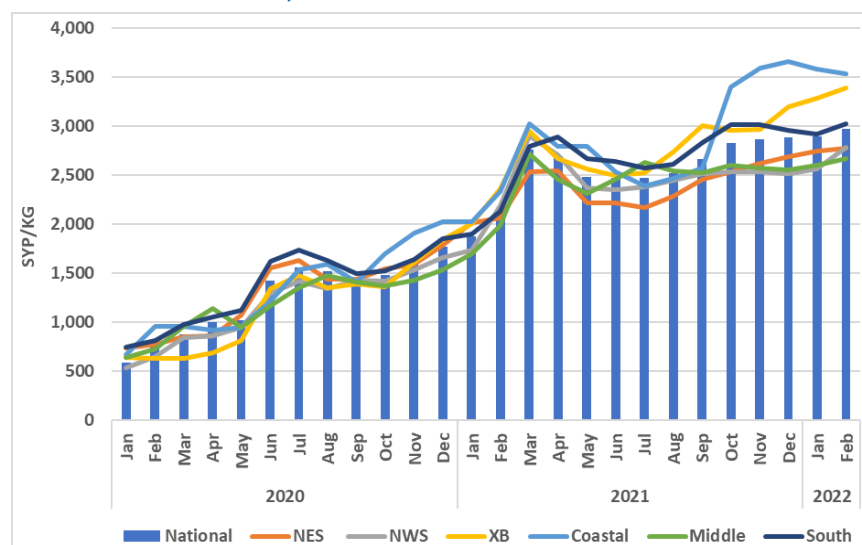
## Staple cereals retail prices

### Rice

The national average retail price of Egyptian white rice increased by one percent compared to January 2022 and by 54 percent y-o-y, reaching SYP 2,977/kg in February 2022. Tartous recorded the highest monthly average price at SYP 4,311/kg (down two percent m-o-m), followed by Dar'a at SYP 3,443/kg (up three percent m-o-m). Hama recorded the lowest price at SYP 2,655/kg (up five percent m-o-m), followed by Rural Damascus at SYP 2,666 (up four percent m-o-m).

M-o-m, the Coastal region recorded the highest monthly average price at SYP 3,532/kg (down one percent m-o-m), followed by the Cross-border region at SYP 3,387/kg (up three percent m-o-m). The Middle region of Syria recorded the lowest average Egyptian white rice price by region at SYP 2,672/kg (up three percent m-o-m), followed by the Northeast Syria region at SYP 2,776/kg (up one percent m-o-m) - Chart 7.

Chart 7: Retail Prices of Rice, SYP

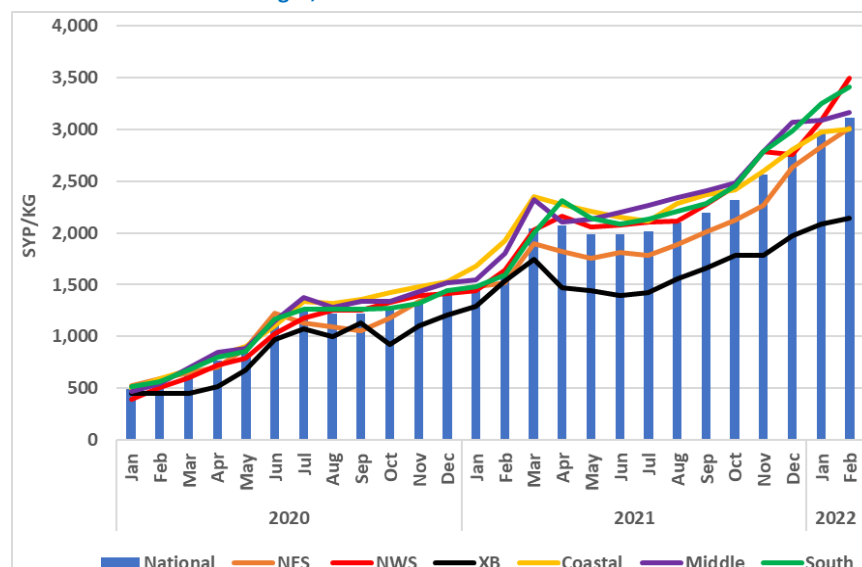


### Bulgur

M-o-m, the national average retail price of bulgur increased by five percent at SYP 3,112/kg in February 2022, whereas y-o-y, the price of bulgur increased by 90 percent. Rural Damascus recorded the highest bulgur retail price at SYP 3,523/kg (up four percent m-o-m), followed by Damascus at SYP 3,481/kg (up four percent m-o-m). While Idleb recorded the lowest price at SYP 2,403/kg (up five percent m-o-m), followed by Tartous at SYP 2,756/kg (up one percent m-o-m).

The Northwest Syria region recorded the highest monthly average bulgur price by region at SYP 3,492/kg (up 12 percent m-o-m), followed by the Southern Syria region at SYP 3,091/kg (up five percent m-o-m). On the other hand, the Cross-border region recorded the lowest average bulgur price at SYP 2,147/kg (up three percent m-o-m), followed by the Coastal Syria region at SYP 3,004/kg (up one percent m-o-m) - Chart 8.

Chart 8: Retail Prices of Bulgur, SYP



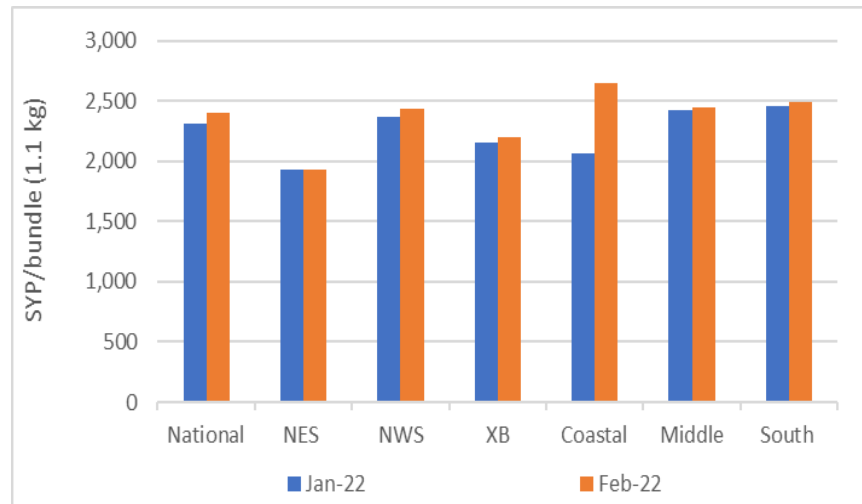
### Bread\*

The national average price of subsidized bread increased by three percent m-o-m at SYP 251/bundle in February 2022; whereas it has increased by 127 percent compared to 12 months ago.

Moreover, the price of commercial bread increased by four percent m-o-m and by 60 percent y-o-y, reaching SYP 2,396/bundle. Lattakia recorded the highest commercial bread price of SYP 2,747/bundle (up two percent m-o-m) followed by Hama at SYP 2,615 (up two percent m-o-m). While Ar-Raqqa recorded the lowest national average price of commercial bread at SYP 1,595/bundle (unchanged m-o-m) followed by Dar'a at SYP 2,371 (unchanged m-o-m) - Chart 9.

Broken down by region, the Southern region recorded the highest price of SYP 2,486/bundle (up one percent m-o-m), while the Northeast Syria region recorded the lowest price at SYP 1,932/bundle (unchanged m-o-m).

Chart 9: Retail Prices of commercial bread, SYP



Source: WFP Field Offices

\*Starting from March 2021, WFP-monitored commercial bread has been switched from resold public bread bundles to commercial bread sold at shops. Prices for the past year have been adjusted to include commercial bread resold from shops. Moreover, all prices have been adjusted to reflect bread bundle size of 1.1 kg instead of 1.3 kg since November 2020.

### Exchange rate\*\*

In February 2022, the informal SYP/USD exchange rate depreciated by one percent m-o-m, reaching SYP 3,634/USD. Moreover, y-o-y the Syrian pound has depreciated by 11 percent.

The highest informal exchange rate was reported in Damascus at SYP 3,661/USD (depreciating by one percent m-o-m), followed by As-Sweida, Dar'a and Rural Damascus, all at SYP 3,654/USD (As-Sweida and Dar'a depreciated by two percent m-o-m while Rural Damascus depreciated by one percent m-o-m). The lowest informal exchange rate was reported in Idleb at SYP 3,612/USD (unchanged m-o-m) and Aleppo at SYP 3,612/USD (depreciating by one percent m-o-m), followed by Hama and Homs both at SYP 3,613/USD (both depreciating by one percent m-o-m) - Table 3.

Moreover, the formal exchange rate and the UN operational rate have both remained unchanged m-o-m at SYP 2,500/USD.

### Diesel

The formal national average price of diesel remained unchanged compared to last month at SYP 475/litre in February 2022. This price though is 173 percent higher than 12 months earlier (SYP 174/litre).

Moreover, the informal national average price of transport diesel decreased by two percent m-o-m, while it increased by 131 percent y-o-y, reaching SYP 2,760/litre in February 2022. The informal price remains almost five times higher than the formal price (SYP 475/litre) - Chart 10.

Damascus recorded the highest informal price at SYP 3,419/litre (down four percent m-o-m). Al-Hasakeh recorded the lowest price at SYP 827/litre (up 49 percent m-o-m); the increase in the informal price of diesel in Al-Hasakeh is reportedly caused by a shortage in diesel availability since in previous years the Kurdish Syrian Alliance (KSA) distributed two cycles of subsidized heating diesel (400 litres per cycle per each family) for the winter months. This year however KSA distributed half this quantity, and as a result led to an increase of the price on the parallel market.

Broken down by region, the Coastal region recorded the highest price of informal transport diesel at SYP 3,278/litre (down three percent m-o-m), while Northeast Syria recorded the lowest price at SYP 1,558/litre (up eight percent m-o-m).

Moreover, the informal national average price of heating diesel decreased by one percent m-o-m, reaching SYP 2,667/litre. Broken down by region, the Coastal region recorded the highest price at SYP 3,250/litre (unchanged m-o-m), while Cross-border Syria recorded the lowest price at SYP 1,789/litre (down one percent m-o-m).

### Butane gas prices

The national average price of formal butane gas cylinder (25,000 L) increased by one percent m-o-m and by 279 percent y-o-y, reaching SYP 10,555/refill in February 2022.

Moreover, the informal national average price of one butane gas cylinder (25,000 L) increased by three percent m-o-m, while it increased by 200 percent y-o-y, reaching SYP 71,757/refill in February. Damascus recorded the highest price at SYP 137,778/refill (up 23 percent m-o-m), while Al-Hasakeh recorded the lowest price at SYP 15,333/refill (up nine percent m-o-m).

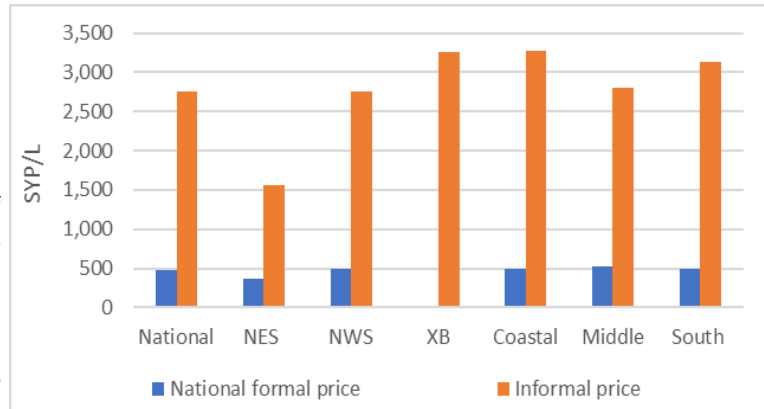
Broken down by region, the Southern region recorded the highest informal butane gas refill price at SYP 98,087/refill (up six percent m-o-m) followed by the Coastal region at SYP 70,556 (down 14 percent). Northeast Syria recorded the lowest price at SYP 33,795/refill (up 16 percent m-o-m) followed by the Cross-border region at SYP 44,210 (unchanged m-o-m) - Chart 11.

Table 3: Informal market exchange rate, 1 USD to SYP

Governorate	January 2022	% change (m-o-m)	% change (y-o-y)
Aleppo	3,612	-1%	-10%
Al-Hasakeh	3,643	-2%	-8%
Ar-Raqqa	3,646	-2%	-9%
As-Sweida	3,654	-2%	-10%
Damascus	3,661	-1%	-9%
Dar'a	3,654	-2%	-17%
Deir-ez-Zor	3,618	-1%	-7%
Hama	3,613	-1%	-7%
Homs	3,613	-1%	-7%
Idleb	3,612	0%	-12%
Lattakia	3,626	-2%	-9%
Quneitra	3,651	-2%	-17%
Rural Damascus	3,654	-1%	-16%
Tartous	3,626	-2%	-9%
National average	3,634	-1%	-11%
Official rate	2,500	0%	-50%
UN operational rate	2,500	0%	-50%

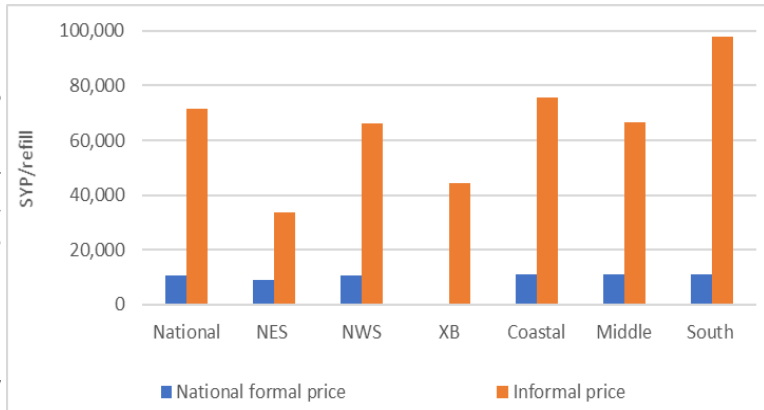
Source: WFP field offices

Chart 10: Formal and informal transport diesel prices, SYP\*\*\*



Source: WFP

Chart 11: Formal and informal butane gas cylinder prices, SYP\*\*\*



Source: WFP

\*\*When measuring exchange rates, there are two quotations. The first is the direct quotation where the US dollar is the base of measuring the change in exchange rate against the local currency. The second one is the indirect quotation where the local currency is the base of measuring the change in the exchange rate against the US dollar. The change in the exchange rate used below reflects the indirect quotation (measuring how much has the Syrian pound improved (appreciated) or worsened (depreciated) against the US dollar).

\*\*\*No formal prices have been reported in the cross-border region because there is no subsidized diesel or butane gas in the region.

## Terms of Trade (ToT)<sup>8</sup>

### ToT between wage labour and wheat flour

The national average non-skilled labour wage, representing construction, off-loading and agricultural labour, was recorded at SYP 9,790/day (up two percent m-o-m) in February 2022. Moreover, the non-skilled national average wage rate was 87 percent above its y-o-y level and 35 percent above levels recorded in August 2021 - Chart 12.

Rural Damascus recorded the highest daily non-skilled wage rate at SYP 17,617/day (up four percent m-o-m), followed by Damascus at SYP 16,583 (unchanged m-o-m). Deir-ez-Zor recorded the lowest daily non-skilled wage rate at SYP 4,393/day (up three percent m-o-m). Broken down by region, the Coastal region recorded the highest non-skilled wage rate of SYP 15,236/day (up six percent m-o-m), while Northeast Syria recorded the lowest non-skilled wage rate of SYP 6,172/day (up 1 percent m-o-m).

The national average ToT between wheat flour and wage labour, a proxy indicator for purchasing power, decreased by one percent between January and February 2022, reaching 3.95 kgs of wheat flour/daily wage compared to 3.99 kgs of wheat flour/daily wage in January 2022.

The national average ToT between wheat flour and wage labour increased by four percent compared to August 2021 (six months ago), while it increased by 15 percent compared to February 2021. In other words, the national average daily wage of a non-skilled labourer could buy 3.99 kgs of wheat flour in January 2022 compared to 3.8 kgs in August 2021, and 3.5 kgs in February 2021.

Broken down by region, the Coastal region recorded the highest ToT at 6.3 kgs (up four percent m-o-m), while Northwest Syria recorded the lowest ToT at 2.3 kgs (down three percent m-o-m) - Chart 13.

### ToT between sheep and wheat flour

The national average price of a two-year old alive male sheep increased by three percent compared to January 2022 and by 17 percent since February 2021, reaching SYP 506,601/sheep in February 2022 (Chart 14). Tartous recorded the highest average price of a two-year old alive male sheep at SYP 690,833/head (up one percent m-o-m), while Deir-ez-Zor recorded the lowest price at SYP 372,937/head (down five percent m-o-m).

Broken down by region, the Coastal region recorded the highest average price across Syria at SYP 624,583/sheep (up six percent m-o-m), followed by Northwest Syria at SYP 581,458/sheep (up 12 percent m-o-m). While Northeast Syria recorded the lowest price at SYP 438,567/sheep (up one percent m-o-m), followed by the Cross-border region at SYP 484,497/sheep (up six percent m-o-m).

In February 2022, the ToT between an alive two-year old male sheep and wheat flour was 205 kg/sheep (unchanged m-o-m). However, the ToT worsened by 28 percent compared to February 2021.

Broken down by region, the Coastal region recorded the highest ToT at 260 kg/sheep (up four percent m-o-m), followed by the Middle region at 214 kg/sheep (up six percent m-o-m). While Northeast Syria recorded the lowest ToT at 187 kg/sheep (down one percent m-o-m), followed by Southern Syria at 196 kg/sheep (down six percent m-o-m) - Chart 15.

Chart 12: Daily wage for unskilled labour, SYP

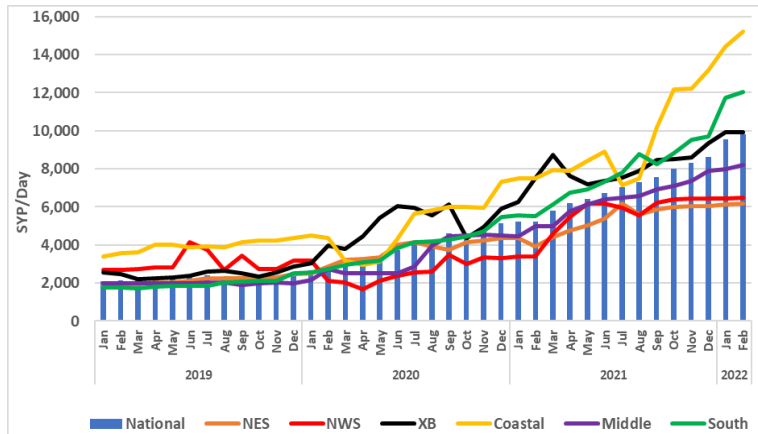


Chart 13: Terms of Trade (ToT) between wheat flour and wage rate

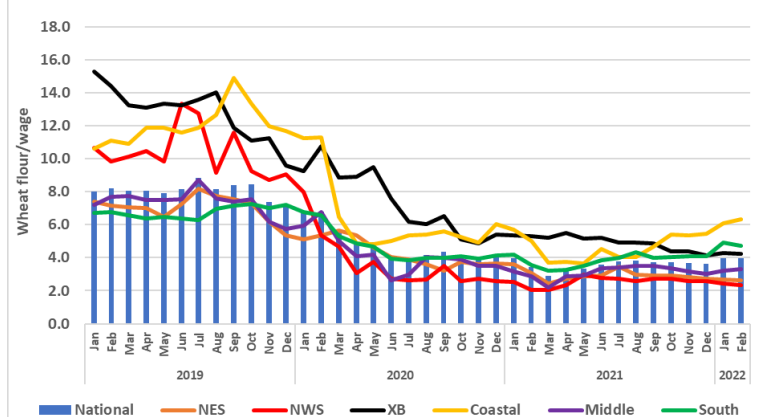


Chart 14: Price of livestock, SYP/one 2Y old sheep

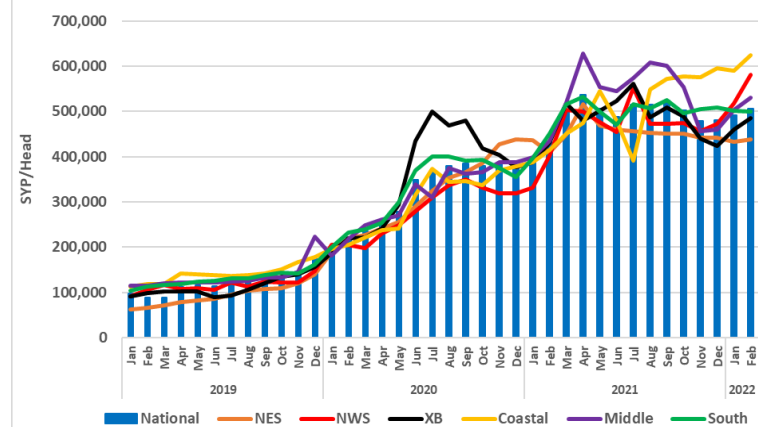
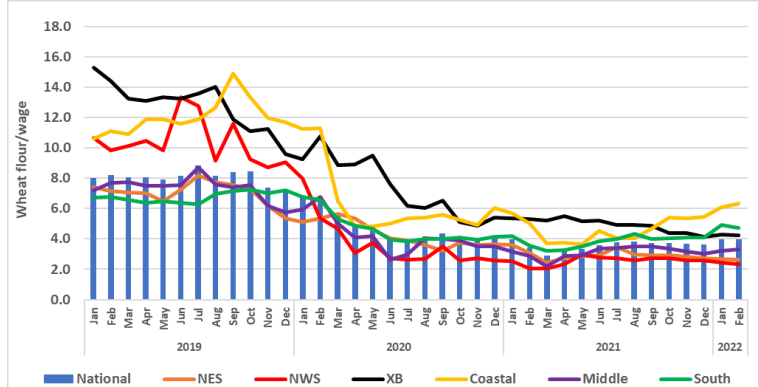


Chart 15: Terms of Trade (ToT) between wheat flour and the price of a 2 year old sheep



Source: WFP

<sup>8</sup> The ToT are proxy indicators of the purchasing power of households that rely on livestock and/or casual labour as their main source of income for the purchase of cereals from local markets. ToT are important components of food security analysis. Changes in the terms of trade between wages/livestock and staple food commodities are indicative of the trends in purchasing power and the impact on the food security situation of households dependent on food purchases through income from daily wage labour and/or the sale of livestock.



Table 5. Market Price of Main Commodities in Syrian Pounds: February 2022

Commodity	Governorate	Current Price	Price change	Price change	Price change	Average Change	Average Change	Average Change	Commodity	Governorate	Current Price	Price change	Price change	Price change	Average Change	Average Change	Average Change
			1M (%)	6 M (%)	12 M (%)	1M	6 M	12 M				1M (%)	6 M (%)	12 M (%)	1M	6 M	12 M
Bread Public (1.1 kg)	Aleppo*	248	0.8	2	105	↗	↗	↗	Dates (kg)	Aleppo	7,362	3	51	54	↗	↗	↗
	Damascus	200	-	-	100	↔	↔	↗		Damascus	8,514	5	54	84	↗	↗	↗
	Dar'a	254	-3	5	102	↘	↗	↗		Dar'a	8,211	8	63	97	↗	↗	↗
	Deir-ez-Zor	355	24	26	188	↗	↗	↗		Deir-ez-Zor	4,338	8	35	51	↗	↗	↗
	Hama	250	-	-	150	↔	↔	↗		Hama	6,750	2	35	47	↗	↗	↗
	Al-Hasakeh	213	6	6	113	↗	↗	↗		Al-Hasakeh	4,500	0.2	20	26	↗	↗	↗
	Homs	250	-	1	150	↔	↗	↗		Homs	5,149	2	28	12	↗	↗	↗
	Idleb*	NA	-	-	-	↔	↔	↔		Idleb	5,255	4	28	30	↗	↗	↗
	Lattakia	276	1.0	10	171	↗	↗	↗		Lattakia	7,769	4	58	48	↗	↗	↗
	Quneitra	250	-	-	79	↔	↔	↗		Quneitra	7,563	2	68	67	↗	↗	↗
	Ar-Raqqa	211	-0.3	-0.3	102	↘	↘	↗		Ar-Raqqa	2,500	-32	-38	-32	↘	↘	↘
	Rural Damascus	200	-	-7	100	↔	↘	↗		Rural Damascus	7,644	2	51	63	↗	↗	↗
	As-Sweida	250	-	25	150	↔	↗	↗		As-Sweida	6,375	-0.5	18	27	↘	↗	↗
	Tartous	250	-	-	133	↔	↔	↗		Tartous	4,642	0.2	-14	-4	↗	↘	↘
Bread Shop (1.1 kg)	Aleppo	2,516	4	34	50	↗	↗	↗	Diesel (parallel market, L)	Aleppo	2,911	1	11	81	↗	↗	↗
	Damascus	2,522	-2	19	43	↘	↗	↗		Damascus	3,419	-4	14	150	↘	↗	↗
	Dar'a	2,374	-0.1	22	60	↘	↗	↗		Dar'a	3,017	1	8	153	↗	↗	↗
	Deir-ez-Zor	NA	-	-	-	↔	↔	↔		Deir-ez-Zor	1,886	4	42	128	↗	↗	↗
	Hama	2,615	2	31	58	↗	↗	↗		Hama	2,850	4	6	143	↗	↗	↗
	Al-Hasakeh	2,100	-	138	76	↔	↗	↗		Al-Hasakeh	827	49	22	309	↗	↗	↗
	Homs	2,329	0.3	25	41	↗	↗	↗		Homs	2,768	-3	22	135	↘	↗	↗
	Idleb	2,000	1	18	33	↗	↗	↗		Idleb	3,239	12	22	45	↗	↗	↗
	Lattakia	2,747	2	18	139	↗	↗	↗		Lattakia	3,307	-6	70	188	↘	↗	↗
	Quneitra	2,454	4	17	24	↗	↗	↗		Quneitra	2,788	12	9	142	↗	↗	↗
	Ar-Raqqa	1,595	-	-	-9	↔	↔	↘		Ar-Raqqa	1,754	-1	52	167	↘	↗	↗
	Rural Damascus	2,500	2	17	42	↗	↗	↗		Rural Damascus	3,399	-3	27	145	↘	↗	↗
	As-Sweida	2,675	2	30	62	↗	↗	↗		As-Sweida	3,000	5	18	131	↗	↗	↗
	Tartous	2,550	80	87	132	↗	↗	↗		Tartous	3,250	-	14	180	↔	↗	↗
Bulgur (kg)	Aleppo	2,857	9	50	75	↗	↗	↗	US Dollar exchange rate (parallel market, \$1)	Aleppo	3,612	-1	-8	-10	↘	↘	↘
	Damascus	3,481	4	64	118	↗	↗	↗		Damascus	3,661	-1	-7	-9	↘	↘	↘
	Dar'a	3,376	5	47	111	↗	↗	↗		Dar'a	3,654	-2	-8	-17	↘	↘	↘
	Deir-ez-Zor	3,004	10	49	101	↗	↗	↗		Deir-ez-Zor	3,618	-1	-8	-7	↘	↘	↘
	Hama	3,220	7	49	78	↗	↗	↗		Hama	3,613	-1	-6	-7	↘	↘	↘
	Al-Hasakeh	2,992	3	72	95	↗	↗	↗		Al-Hasakeh	3,643	-2	-8	-8	↘	↘	↘
	Homs	3,108	-1	26	72	↘	↗	↗		Homs	3,613	-1	-6	-7	↘	↘	↘
	Idleb	2,403	5	43	63	↗	↗	↗		Idleb	3,612	-0.4	-9	-12	↘	↘	↘
	Lattakia	3,253	1	50	88	↗	↗	↗		Lattakia	3,626	-2	-8	-9	↘	↘	↘
	Quneitra	3,309	9	56	120	↗	↗	↗		Quneitra	3,651	-2	-7	-17	↘	↘	↘
	Ar-Raqqa	3,033	5	59	100	↗	↗	↗		Ar-Raqqa	3,646	-2	-8	-9	↘	↘	↘
	Rural Damascus	3,523	4	68	124	↗	↗	↗		Rural Damascus	3,654	-1	-7	-16	↘	↘	↘
	As-Sweida	3,321	2	38	95	↗	↗	↗		As-Sweida	3,654	-2	-7	-10	↘	↘	↘
	Tartous	2,756	1	15	30	↗	↗	↗		Tartous	3,626	-2	-8	-9	↘	↘	↘
Butane Cylinder (parallel market, 25 kg)	Aleppo	56,679	3	15	104	↗	↗	↗	Eggs (carton)	Aleppo	10,468	2	35	70	↗	↗	↗
	Damascus	137,778	23	319	589	↗	↗	↗		Damascus	11,150	1	36	78	↗	↗	↗
	Dar'a	86,333	-5	1	235	↘	↗	↗		Dar'a	10,943	2	34	78	↗	↗	↗
	Deir-ez-Zor	45,222	3	65	90	↗	↗	↗		Deir-ez-Zor	10,649	-3	31	71	↘	↗	↗
	Hama	59,583	3	12	99	↗	↗	↗		Hama	10,517	1	39	66	↗	↗	↗
	Al-Hasakeh	15,333	9	57	64	↗	↗	↗		Al-Hasakeh	10,313	0.4	70	68	↗	↗	↗
	Homs	71,310	1	10	138	↗	↗	↗		Homs	10,767	-0.4	36	70	↘	↗	↗
	Idleb	44,219	1	9	31	↗	↗	↗		Idleb	9,539	2	18	56	↗	↗	↗
	Lattakia	86,389	8	170	237	↗	↗	↗		Lattakia	10,842	4	43	65	↗	↗	↗
	Quneitra	83,750	2	54	449	↗	↗	↗		Quneitra	11,198	4	39	85	↗	↗	↗
	Ar-Raqqa	48,182	37	59	237	↗	↗	↗		Ar-Raqqa	10,052	-1	28	64	↘	↗	↗
	Rural Damascus	114,107	13	177	472	↗	↗	↗		Rural Damascus	11,068	0.5	42	76	↗	↗	↗
	As-Sweida	78,125	2	33	231	↗	↗	↗		As-Sweida	11,448	7	35	76	↗	↗	↗
	Tartous	75,000	-10	-3	150	↘	↘	↗		Tartous	10,903	0.3	38	75	↗	↗	↗
Cheese (kg)	Aleppo	10,804	3	29	81	↗	↗	↗	Eggplant (kg)	Aleppo	3,179	30	343	119	↗	↗	↗
	Damascus	10,689	1	51	87	↗	↗	↗		Damascus	3,422	38	244	162	↗	↗	↗
	Dar'a	10,397	-7	47	110	↘	↗	↗		Dar'a	2,906	63	328	110	↗	↗	↗
	Deir-ez-Zor	9,420	-5	39	102	↘	↗	↗		Deir-ez-Zor	2,245	36	266	64	↗	↗	↗
	Hama	10,875	-4	40	111	↘	↗	↗		Hama	2,923	37	310	83	↗	↗	↗
	Al-Hasakeh	9,906	7	107	88	↗	↗	↗		Al-Hasakeh	1,813	-8	75	24	↘	↗	↗
	Homs	9,310	-0.1	40	81	↘	↗	↗		Homs	2,773	61	216	73	↗	↗	↗
	Idleb	8,908	9	18	24	↗	↗	↗		Idleb	3,742	20	396	73	↗	↗	↗
	Lattakia	11,453	-1	28	64	↘	↗	↗		Lattakia	1,807	14	185	34	↗	↗	↗
	Quneitra	11,000	10	71	128	↗	↗	↗		Quneitra	2,679	32	283	130	↗	↗	↗
	Ar-Raqqa	10,421	20	54	130	↗	↗	↗		Ar-Raqqa	2,727	17	238	86	↗	↗	↗
	Rural Damascus	10,244	-1	51	82	↘	↗	↗		Rural Damascus	3,161	57	297	148	↗	↗	↗
	As-Sweida	9,656	3	29	87	↗	↗	↗		As-Sweida	2,744	50	501	84	↗	↗	↗
	Tartous	9,236	0.5	-3	69	↗	↘	↗		Tartous	1,125	3	13	-17	↗	↗	↘
Chickpeas (kg)	Aleppo	3,344	12	44	63	↗	↗	↗	Fish (tuna, canned) - 160 gm	Aleppo	3,581	7	62	92	↗	↗	↗
	Damascus	4,697	4	45	188	↗	↗	↗		Damascus	4,733	-3	75	118	↘	↗	↗
	Dar'a	3,946	6	29	111	↗	↗	↗		Dar'a	3,866	2	58	86	↗	↗	↗
	Deir-ez-Zor	3,475	21	42	170	↗	↗	↗		Deir-ez-Zor	3,080	5	26	84	↗	↗	↗
	Hama	4,570	5	32	105	↗	↗	↗		Hama	4,475	3	66	72	↗	↗	↗
	Al-Hasakeh	3,331	1	55	145	↗	↗	↗		Al-Hasakeh	2,660	-0.5	-27	39	↘	↘	↗
	Homs	4,071	-2	27	82	↘	↗	↗		Homs	4,402	-2	65	69	↘	↗	↗
	Idleb	3,171	5	35	74	↗	↗	↗		Idleb	3,194	4	52	52	↗	↗	↗
	Lattakia	4,211	10	18	82	↗	↗	↗		Lattakia	4,186	-7	55	71	↘	↗	↗
	Quneitra	4,200	10	34	150	↗	↗	↗		Quneitra	4,019	0.3	60	92	↗	↗	↗
	Ar-Raqqa	5,000	-	35	166	↔	↗	↗		Ar-Raqqa	3,202	1	40	84	↗	↗	↗
	Rural Damascus	4,702	4	62	180	↗	↗	↗		Rural Damascus	4,548	-9	78	104	↘	↗	↗
	As-Sweida	4,048	9	38	116	↗	↗	↗		As-Sweida	4,621	-7	83</				



Commodity	Governorate	Current Price	Price change 1M (%)	Price change 6 M (%)	Price change 12 M (%)	Average Change 1M	Average Change 6 M	Average Change 12 M	Commodity	Governorate	Current Price	Price change 1M (%)	Price change 6 M (%)	Price change 12 M (%)	Average Change 1M	Average Change 6 M	Average Change 12 M
Iodized salt (kg)	Aleppo	968	1	24	54	↗	↗	↗	Sheep 2Y old Male (head)	Aleppo	540,357	7	13	36	↗	↗	↗
	Damascus	860	11	36	110	↗	↗	↗		Damascus	549,917	6	0.7	20	↗	↗	↗
	Dar'a	876	13	52	122	↗	↗	↗		Dar'a	532,604	-0.1	3	21	↘	↗	↗
	Deir-ez-Zor	700	75	47	150	↔	↗	↗		Deir-ez-Zor	372,937	-5	-10	3	↘	↘	↗
	Hama	727	-1	1	-9	↘	↗	↘		Hama	561,250	9	-2	29	↗	↘	↗
	Al-Hasakeh	606	-2	-20	30	↘	↘	↗		Al-Hasakeh	468,229	3	29	12	↗	↗	↗
	Homs	869	0.3	-4	9	↗	↘	↗		Homs	493,488	2	-21	13	↗	↘	↗
	Idleb	529	1	4	-1	↗	↗	↘		Idleb	508,322	10	-1	11	↗	↘	↗
	Lattakia	713	8	11	12	↗	↗	↗		Lattakia	558,333	12	5	33	↗	↗	↗
	Quneitra	558	12	41	43	↗	↗	↗		Quneitra	450,000	-10	-8	6	↘	↘	↗
	Ar-Raqqa	950	6	26	141	↗	↗	↗		Ar-Raqqa	483,750	6	3	3	↗	↗	↗
	Rural Damascus	629	1	28	48	↗	↗	↗		Rural Damascus	499,226	7	-0.3	9	↗	↘	↗
	As-Sweida	1,000	0	24	164	↔	↗	↗		As-Sweida	450,000	-8	-6	-5	↘	↘	↘
	Tartous	928	2	6	16	↗	↗	↗		Tartous	690,833	1	22	68	↗	↗	↗
	Red split lentils (kg)	Aleppo	4,687	3	66	88	↗	↗		↗	Sugar (kg)	Aleppo	3,130	7	36	66	↗
Damascus		4,861	1	55	163	↗	↗	↗	Damascus	2,975		2	22	62	↗	↗	↗
Dar'a		4,786	4	78	220	↗	↗	↗	Dar'a	2,853		5	17	48	↗	↗	↗
Deir-ez-Zor		4,399	13	98	181	↗	↗	↗	Deir-ez-Zor	3,127		8	28	63	↗	↗	↗
Hama		4,565	-12	54	115	↘	↗	↗	Hama	2,930		6	22	53	↗	↗	↗
Al-Hasakeh		4,702	4	182	149	↗	↗	↗	Al-Hasakeh	3,247		1	121	70	↗	↗	↗
Homs		4,429	1	49	106	↗	↗	↗	Homs	2,806		5	24	46	↗	↗	↗
Idleb		3,964	-5	50	57	↘	↗	↗	Idleb	3,238		6	44	60	↗	↗	↗
Lattakia		4,669	0.5	51	103	↗	↗	↗	Lattakia	2,860		3	20	49	↗	↗	↗
Quneitra		4,521	0.5	61	139	↗	↗	↗	Quneitra	2,807		6	19	50	↗	↗	↗
Ar-Raqqa		5,323	4	34	161	↗	↗	↗	Ar-Raqqa	4,050		-3	71	117	↘	↗	↗
Rural Damascus		5,076	5	58	169	↗	↗	↗	Rural Damascus	2,958		5	32	60	↗	↗	↗
As-Sweida		4,198	1	57	100	↗	↗	↗	As-Sweida	3,000		14	24	49	↗	↗	↗
Tartous		4,208	-1	53	88	↘	↗	↗	Tartous	3,014		0.5	36	62	↗	↗	↗
Meat (beef, kg)		Aleppo	23,592	6	7	41	↗	↗	↗	Tomato (kg)		Aleppo	2,237	33	173	109	↗
	Damascus	24,958	9	14	47	↗	↗	↗	Damascus		2,149	34	118	129	↗	↗	↗
	Dar'a	19,875	1	2	31	↗	↗	↗	Dar'a		2,057	26	176	114	↗	↗	↗
	Deir-ez-Zor	16,750	-2	-1	22	↘	↘	↗	Deir-ez-Zor		1,801	33	89	78	↗	↗	↗
	Hama	23,333	8	17	33	↗	↗	↗	Hama		1,950	27	95	79	↗	↗	↗
	Al-Hasakeh	18,083	-0.6	-2	24	↘	↘	↗	Al-Hasakeh		2,148	-1	77	90	↘	↗	↗
	Homs	24,595	9	19	41	↗	↗	↗	Homs		2,112	53	111	93.5	↗	↗	↗
	Idleb	16,403	5	-17	-3	↗	↘	↘	Idleb		2,717	24	83	108	↗	↗	↗
	Lattakia	23,833	4	8	39	↗	↗	↗	Lattakia		1,340	10	36	9	↗	↗	↗
	Quneitra	20,000	0	-4	40	↔	↘	↗	Quneitra		2,028	33	161	129	↗	↗	↗
	Ar-Raqqa	14,792	-4	-4	26	↘	↘	↗	Ar-Raqqa		2,003	17	106	64	↗	↗	↗
	Rural Damascus	23,271	3	7	38	↗	↗	↗	Rural Damascus		2,026	23	117	119	↗	↗	↗
	As-Sweida	21,563	8	8	46	↗	↗	↗	As-Sweida		2,377	67	189	88	↗	↗	↗
	Tartous	29,278	1	23	74	↗	↗	↗	Tartous		1,425	7	13	2	↗	↗	↗
	White beans (kg)	Aleppo	6,583	-1	27	36	↘	↗	↗		Unskilled Labor wage*	Aleppo	8,140	-1	26	68	↘
Damascus		7,903	-2	23	40	↘	↗	↗	Damascus	16,583		-0.2	55	130	↘	↗	↗
Dar'a		7,810	-4	17	28	↘	↗	↗	Dar'a	8,563		1	26	83	↗	↗	↗
Deir-ez-Zor		6,879	-3	11	21	↘	↗	↗	Deir-ez-Zor	4,393		3	-3	59	↗	↘	↗
Hama		6,925	-8	19	9	↘	↗	↗	Hama	7,733		5	15	55	↗	↗	↗
Al-Hasakeh		5,125	2	17	28	↗	↗	↗	Al-Hasakeh	7,958		0	25	62	↔	↗	↗
Homs		8,196	-1	31	28	↘	↗	↗	Homs	8,595		1	29	72	↗	↗	↗
Idleb		6,135	14	21	34	↗	↗	↗	Idleb	9,317		1	26	16	↗	↗	↗
Lattakia		7,008	1	9	13	↗	↗	↗	Lattakia	15,528		1	69	114	↗	↗	↗
Quneitra		7,300	1	29	101	↗	↗	↗	Quneitra	9,000		10	16	95	↗	↗	↗
Ar-Raqqa		7,225	5	61	41	↗	↗	↗	Ar-Raqqa	7,233		0	8	51	↔	↗	↗
Rural Damascus		7,885	-5	23	39	↘	↗	↗	Rural Damascus	17,617		4	76	147	↗	↗	↗
As-Sweida		8,500	0	31	23	↔	↗	↗	As-Sweida	8,812		-0.5	25	124	↘	↗	↗
Tartous		8,044	0.2	30	34	↗	↗	↗	Tartous	14,944		11	159	93	↗	↗	↗
Vegetable oil (L)		Aleppo	8,211	7	23	58	↗	↗	↗	Wheat Flour (kg)		Aleppo	2,652	5	37	77	↗
	Damascus	9,219	10	23	57	↗	↗	↗	Damascus		2,511	2	20	63	↗	↗	↗
	Dar'a	9,335	1	21	56	↗	↗	↗	Dar'a		2,523	5	21	61	↗	↗	↗
	Deir-ez-Zor	7,837	1	9	52	↗	↗	↗	Deir-ez-Zor		2,594	5	37	96	↗	↗	↗
	Hama	9,097	12	22	44	↗	↗	↗	Hama		2,480	0.1	35	43	↗	↗	↗
	Al-Hasakeh	6,321	0.1	52	37	↗	↗	↗	Al-Hasakeh		2,223	-3	-13	72	↘	↘	↗
	Homs	8,880	6	20	41	↗	↗	↗	Homs		2,482	-1	31	44	↘	↗	↗
	Idleb	7,156	-1	15	65	↘	↗	↗	Idleb		2,273	-1	45	51	↘	↗	↗
	Lattakia	8,742	1	23	34	↗	↗	↗	Lattakia		2,447	5	38	53	↗	↗	↗
	Quneitra	9,213	5	22	58	↗	↗	↗	Quneitra		2,446	18	31	83	↗	↗	↗
	Ar-Raqqa	7,267	0.4	15	46	↗	↗	↗	Ar-Raqqa		2,000	0	0	107	↔	↔	↗
	Rural Damascus	9,270	9	22	58	↗	↗	↗	Rural Damascus		2,582	3	31	79	↗	↗	↗
	As-Sweida	9,010	2	18	51	↗	↗	↗	As-Sweida		2,663	15	30	48	↗	↗	↗
	Tartous	9,399	1	23	61	↗	↗	↗	Tartous		2,357	-1	22	69	↘	↗	↗
	Parsley (packet)	Aleppo	419	52	38	156	↗	↗	↗		Pasta (spaghetti)	Aleppo	4,941	5	37	77	↗
Damascus		293	-4	8	47	↘	↗	↗	Damascus	4,622		5	42	143	↗	↗	↗
Dar'a		445	13	67	157	↗	↗	↗	Dar'a	4,731		5	44	167	↗	↗	↗
Deir-ez-Zor		303	3	38	65	↗	↗	↗	Deir-ez-Zor	3,567		1	21	95	↗	↗	↗
Hama		283	15	11	41	↗	↗	↗	Hama	5,042		6	47	88	↗	↗	↗
Al-Hasakeh		658	4	103	216	↗	↗	↗	Al-Hasakeh	3,015		2	192	61	↗	↗	↗
Homs		231	20	41	15	↗	↗	↗	Homs	6,038		0.04	47	124	↗	↗	↗
Idleb		476	59	12	67	↗	↗	↗	Idleb	2,727		11	22	38	↗	↗	↗
Lattakia		297	5	-2	82	↗	↘	↗	Lattakia	4,889		0.2	52	77	↗	↗	↗
Quneitra		375	0	53	120	↔	↗	↗	Quneitra	4,313		-0.5	38	161	↘	↗	↗
Ar-Raqqa		254	-20	-39	61	↘	↘	↗	Ar-Raqqa	2,173		-21	28	41	↘	↗	↗
Rural Damascus		281	-3	25	43	↘	↗	↗	Rural Damascus	4,213		6	28	120	↗	↗	↗
As-Sweida		250	0.4	-2	92	↗	↘	↗	As-Sweida	4,319		3	25	93	↗	↗	↗
Tartous		286	2	8	-5	↗	↗	↘	Tartous	4,269		1	7	53	↗	↗	↗
Rice (kg)		Aleppo	3,175	6	13	28	↗	↗	↗	Yogurt (kg)		Aleppo	2,415	5	36	71	↗
	Damascus	2,792	11	15	55	↗	↗	↗	Damascus		2,272	1	31	135	↗	↗	↗
	Dar'a	3,443	3	24	44	↗	↗	↗	Dar'a		2,158	-0.3	36	108	↘	↗	↗
	Deir-ez-Zor	2,726	-0.4	11	50	↘	↗	↗	Deir-ez-Zor		1,461	7	52	73	↗	↗	↗
	Hama	2,655	5	5	34	↗	↗	↗	Hama		2,222	-4	36	80	↘	↗	↗
	Al-Hasakeh	2,825	0.4	52	37	↗	↗	↗	Al-Hasakeh		2,069	1	40	72	↗	↗	↗
	Homs	2,686	1	6	35	↗	↗	↗	Homs		1,920	-1	47	56	↘	↗	↗
	Idleb	3,111	2	28	56	↗	↗	↗	Idleb		2,380	0.5	23	35	↗	↗	↗
	Lattakia	2,753	-1	8	14	↘	↗	↗	Lattakia		1,983	-1	25	53	↘	↗	↗
	Quneitra	3,284	2	10	33	↗	↗	↗	Quneitra		2,150	2	29	193	↗	↗	↗
	Ar-Raqqa	2,807	4	29	16	↗	↗	↗	Ar-Raqqa		2,173	1	67	106	↗	↗	↗
	Rural Damascus	2,666	4	11	47	↗	↗	↗	Rural Damascus		2,330	-0.3	52	145	↘	↗	↗
	As-Sweida	2,767	0.8	11	33	↗	↗	↗	As-Sweida		2,000	0	36	88	↔	↗	↗
	Tartous	4,311	-2	80	91	↘	↗	↗	Tartous		1,981	-0.1					