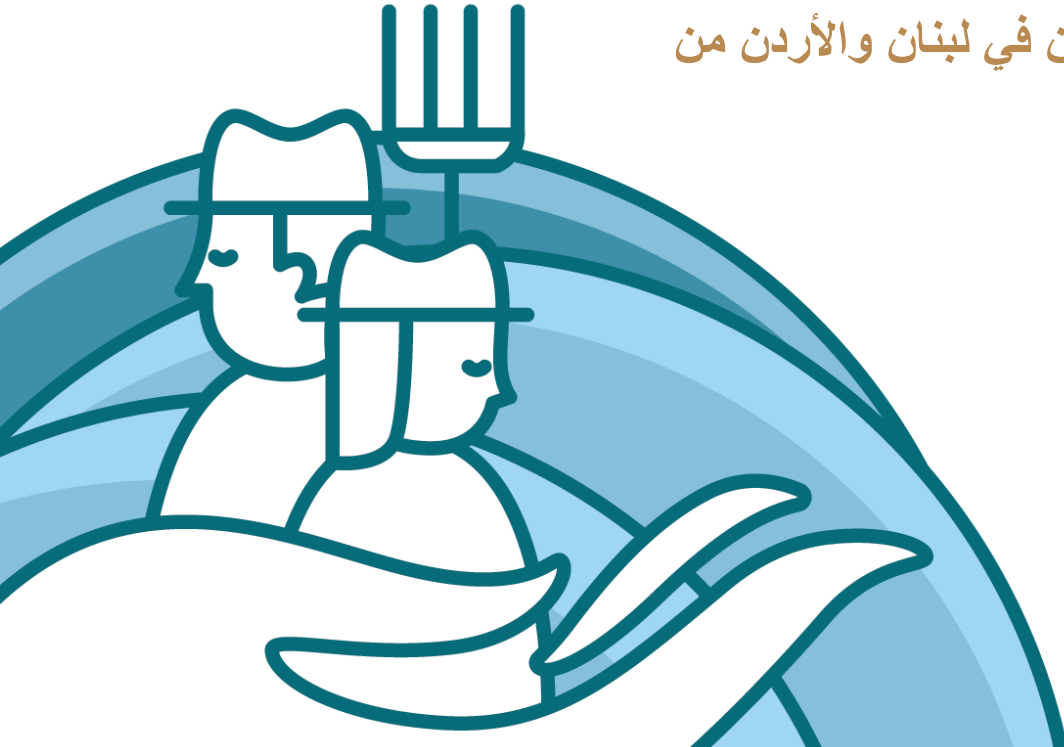


# Enhancing resilient livelihoods and food security of host communities and Syrian refugees in Jordan and Lebanon through the promotion of sustainable agricultural development

تعزيز سبل العيش والأمن الغذائي للمجتمعات المضيفة وللنازحين السوريين في لبنان والأردن من  
خلال تعزيز التنمية الزراعية المستدامة



<b>Project Title</b>	Enhancing resilient livelihoods and food security of host communities and Syrian refugees in Jordan and Lebanon through the promotion of sustainable agricultural development				
<b>Expected Impact</b>	The social and economic inclusion and cohesion of the populations affected by the Syrian crisis in Jordan and Lebanon is strengthened through local agriculture development				
<b>Project Outcome</b>	Livelihoods and food security of vulnerable agriculture-based host communities and Syrian refugees in Jordan and Lebanon				
<b>Funded by</b>	European Union	<b>Budget (USD)</b>	Total: 25,255,192 Lebanon: 12,833,292	<b>Project Symbol</b>	UNJP/RNE/011/EC TF/MADAD-2018- T04.149
<b>Implementing Agencies</b>	FAO / WFP / IFAD	<b>Implementing Partners</b>	Ministry of Agriculture Green Plan		
<b>Start date</b>	01 / 10 / 2019	<b>Duration</b>	2 years * 3 years	<b>End date</b>	30 / 09 / 2021 * 30 / 09 / 2022
<b>Beneficiaries</b>	Ministry of Agriculture	Small and medium scale farmers	Dairy cooperatives and sector	Syrian Refugees & host communities workers	

# LEBANON

## Expected Results & Beneficiaries



Food and Agriculture Organization of the United Nations



Investing in rural people



Funded by the European Union



RI-Resilience, RI-SSFF, Social Protection



Studies & Coord Dir. Regional services



WFP related projects



NPTP



TVET, LRWR-GP



Extension & Education Dpt., TVET Schools, Regional Services



FSSWG

- Farmer Registration System
- 50 000 farmers registered
- Vulnerable farmer sub-registry
- 8 000 vulnerable farmers registered
- Disaster Risk Reduction mechanism
- 5 000 vul. Farmers supported (CBT)

**1.** **Support System**

**2.** **Institutional Capacities**

- 31+9 Ag centers rehab./equipped
- 75 Master trainers (Leb./Syr.)
- +600 farmers/displaced Syrians trained
- Knowledge platform/sharing

2.5-5K new jobs  
~40K temp. / ~50K sust. work days



~8K work days



900 participants

- 500 vulnerable HH supported (grants for on-farm infrastructure)
- 50 FBS / Clusters
- 2,000 farmers/disp. Syrian trained
- 50 cooperatives supported
- "Small grant fund"

**3.** **Productive Capacities**

**4.** **Natural Resources**

- 150 ha forests managed
- 100 000 trees planted
- 20% increase in HH income
- 10 Km irrigation canals rehab./const.



LRWR-GP, W. Coop, IPM Litani, etc.



Coop G.D.



SALMA, FLRM, Water related projects, etc.



WFP related projects



ARDP, HASAD

Implemented by: ■ FAO ■ WFP ■ IFAD

**1.**   
**Support  
System**

**Adequate agriculture production support systems for vulnerable farm communities rolled out and good agriculture practices supported and developed**



Agriculture Inputs Vouchers (300\$/voucher)



Seeds, Seedling, Farming tools, Greenhouse tools, irrigation tools,



5000 Farmers (2500 phase 1 + 2500 phase 2)



Akkar + North Bekaa

### Food for Assets (FFA)

#### Forestry



#### Agriculture Infrastructure



capital trees

100,000 Seedlings

150 Ha

400 Participants

South: Wadi Hujeir



Agricultural roads + irrigation canals

10 KM

500 Participants

Dunnieh (North Lebanon)

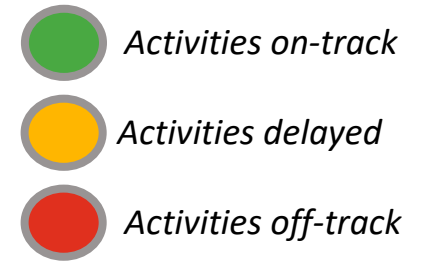


4.



Natural  
Resources

**PRODUCTIVE CAPACITIES OF VULNERABLE SMALLHOLDER FARMERS AND/OR HOME-BASED MICRO AND GROUP-BASED SMALL-SCALE AGRIFOOD ENTERPRISES ARE INCREASED AND JOB OPPORTUNITIES IN FORM OF AGRICULTURAL LABOUR ARE CREATED**



Activity Name		Start Date	Duration	Status	Achieved / Comments
1	Preservation and protection of forest areas and rangelands	Jan 2021	10 Months		<ul style="list-style-type: none"> <li>- Land preparation completed</li> <li>- Procurement activities for seedlings and nurseries</li> <li>- Land preparation activity for the trail</li> </ul>
2	Maintenance/construction of secondary irrigation canals	Feb 2021	10 months		<ul style="list-style-type: none"> <li>- Construction of irrigation canals : 30% progress from the target (10 Km)</li> </ul>

# Geographical Location

Located in the districts of Marjayoun, Bintjbaïl, and Nabatiyeh in South Lebanon, the Wadi el Hujeir Natural Reserve was established in 2010.

It stretches from the Litany river in the village of Qaaqaiyyet el Jisr at the lower part of Nabatiyeh city, to the town of Aitaroun in Bintjbaïl district.

Wadi El Hujeir is bounded by, **11 villages** (Quabrikha, touline, majdal sellem, kantara, Adchit, aytaroun, Meiss, Bani Hayan, Ghandouriya, Borj Qalaway...). The Core Zone of the wadi Al Hujeir natural reserve consists of the protected areas of wadi Al Hujeir natural Reserve (Law # 121) and private lands. The Buffer Zone consists of municipal lands incorporated into the Wadi Hujeir natural Reserve (Law # 121) and private lands. The Transition Zone consists mostly of private lands and municipal lands.





# The reserve

The reserve is covered with:

**Oak maquis** (*Q. calliprinos*, *Q. infectoria*, *Q. cerris* L.var. *Pseudocerris*),  
**Syrian maple** (*Acer syriacum*, common Arabic name: Al kaykab al souri),  
**Yellow hawthorn** (*Crataegus flavida*, common Arabic name: Al zaarour al asfar) and sycamore (*Platanus occidentalis*, common Arabic name: Al delb).

It covers an approximate area of **2478 hectares** at an altitude ranging between 250 and 400 meters above sea level.

Although the municipalities surrounding Wadi El Hujeir reserve counts **60.000 residents**, in terms of services and employment, Al Hujeir natural reserve provides job opportunities and a set of activities and benefits to the village surrounding residents and non-residents.





# Activities

Activity	Impact/ Benefit	Range
Forest management (pruning, cleaning, fire prevention, weeding...etc)	Prevention of fires and supporting the ecosystem of the reserve which has enormous environmental impact	Around <b>15Km length</b> along two sides of the roads with a depth of 5 meters
Forestation and reforestation	Increase the green coverage in the reserve and prevent fires and soil erosions	Around <b>140 Ha.</b> of lands withing the reserve to be forested or reforested.
Establishment of a Nursery	Provide the means for seedlings production and replacements for genetically identical species in the reserve as well as create income for the reserve through aromatic and medicinal herbs plantations	<b>Two greenhouses (51m)</b> to be installed along with irrigation system and two rooms for equipment and other necessary tools and accessories
Creation of a Trailway	Adding an ecotourism aspect for the reserve is essential for income and sustainability as well as point out its importance as a touristic natural site	Around 1.2 Km of trailway characterized by heavy plantation coverage, moderate slope and length.
Installation of early warning fire system based in sensors	This is essential to detect fires while developing and deal with it in an early stage which is vital for successful firefighting.	In different high-risk areas and spots.





**THANK YOU!**

