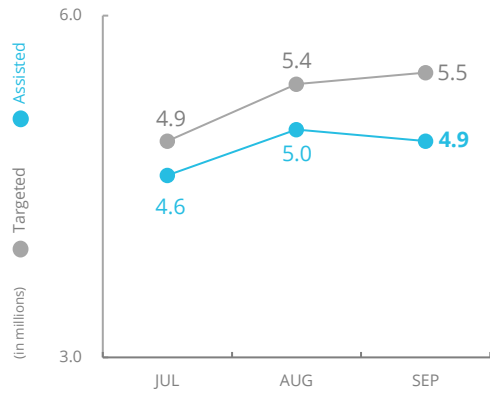
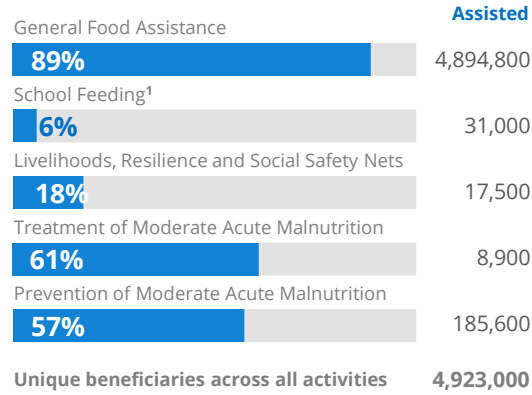


PEOPLE ASSISTED General Food Assistance



SOURCE: WFP, 9 NOV 2021

OPERATIONAL PROFILE By Activity (September)



¹ Schools reopened on 5 September, and the School Feeding Programme resumed the fresh meals component. Preparations are underway to implement the first cycle of date bar and e-voucher distributions in October.

PEOPLE FOOD INSECURE



SOURCE: WFP 2020 Food Security and Livelihoods Assessment

FUNDING Syria Interim Country Strategic Plan (ICSP)

November 2021 - April 2022

US\$479.9m

Net funding requirements

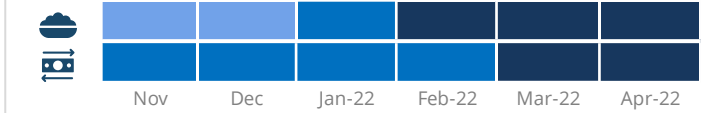
2021 LEVEL 3 RESPONSE
Requirements: US\$1269.9m
Funded: US\$632.2m

50%

AVERAGE MONTHLY FUNDING REQUIREMENTS (6 Months - US\$)

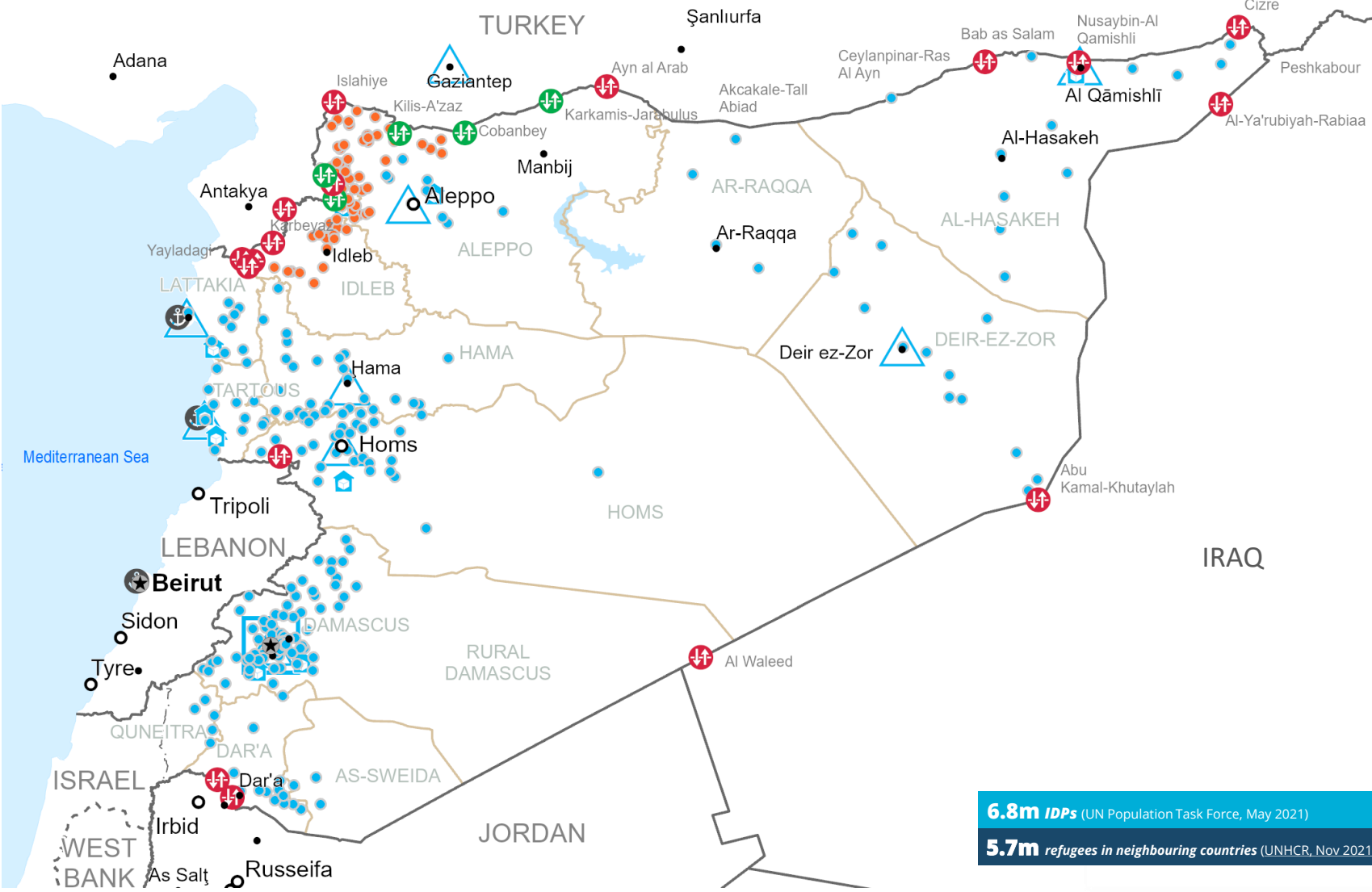
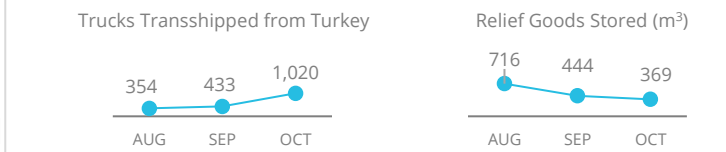
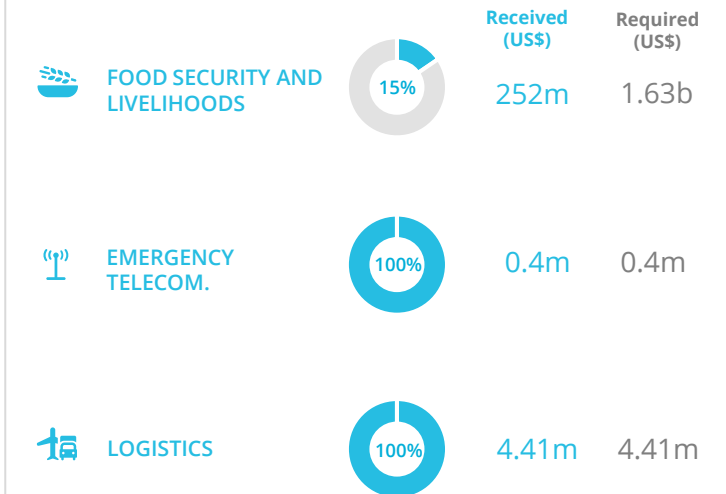


EXPECTED SHORTFALLS



Legend: SF < 5% | 5% < SF < 20% | 20% < SF < 50% | 50% < SF < 80% | SF > 80%

WFP-LED AND SUPPORTED CLUSTERS



6.8m IDPs (UN Population Task Force, May 2021)
5.7m refugees in neighbouring countries (UNHCR, Nov 2021)

- Country Office
- Warehouse
- National Capital
- International Boundary
- Food Distribution Points (FDP) in September 2021
- Field Office
- Open Border Crossings
- Major Town
- Governorate Boundary
- Regular Deliveries
- Open Border Crossings with Restrictions
- Intermediate Town
- Armistice Boundary
- Cross-Border Deliveries
- Closed Border Crossings
- Port

Sources: WFP, UNGIWG, GAUL, GLCSC, OCHA, UNHCR.
The designations employed and the presentation of material in the map(s) do not imply the expression of any opinion on the part of WFP concerning the legal or constitutional status of any country, territory, city or sea, or concerning the delimitation of its frontiers or boundaries. © World Food Programme 2021.

WFP LEVEL 3 EMERGENCY SINCE 14 DECEMBER 2012

SITUATION REPORT and COUNTRY BRIEF

