



Food and Agriculture
Organization of the
United Nations

Working for  #ZeroHunger

Seasonal / Weather Update

FSLC Meeting – 23 November 2022

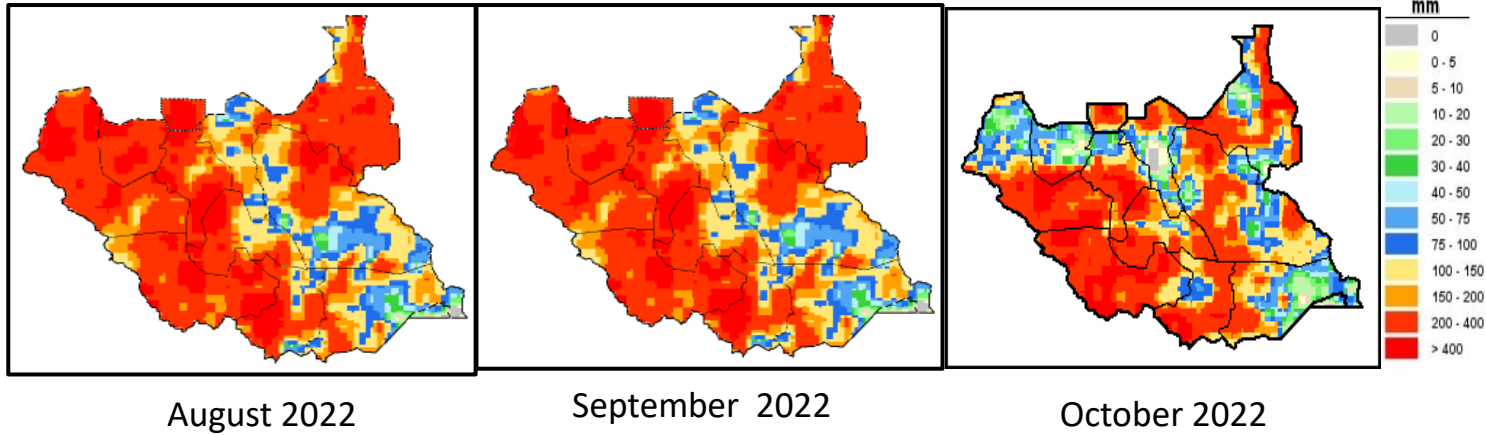
By Mark Nyeko | FAO South Sudan

With funding from the European Union

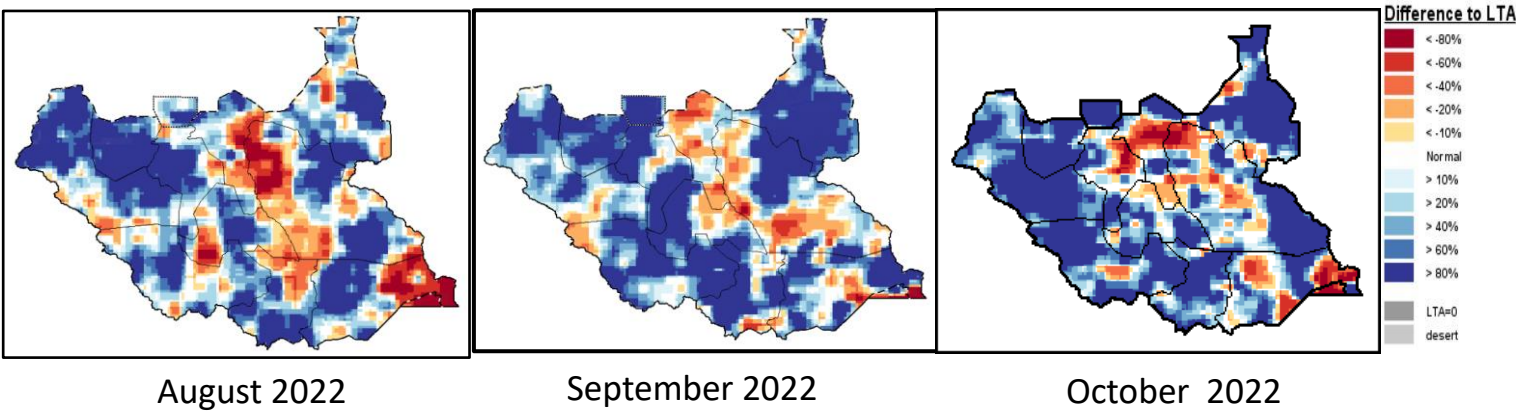


Seasonal progression (August to October 2022)

Rainfall Precipitation (mm)

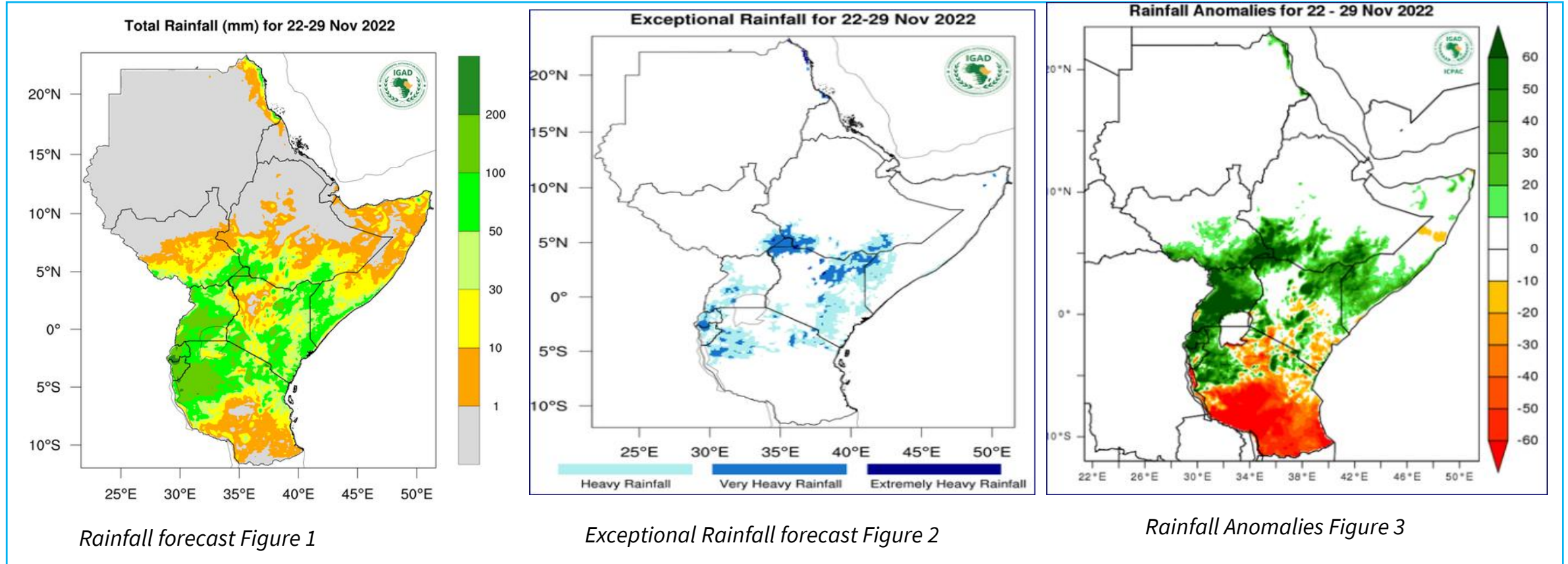


Rainfall anomaly



- Positive progression in the rains since the onset in April; western parts of the country being the wettest in August (*refer to rainfall precipitation images*)
- Gradual decline through September to October 2022 in some parts of the country
- In October significant concentration of above 100 mm rainfall in the western and central eastern parts
- Most of the country received less than 100mm of rainfall
- Compared to the long-term average (1989-2015), from August to October 2022, most of the country was experiencing above-average rainfall (*refer to Rainfall Anomalies images*)
- By October most of Eastern Equatoria, parts of Jonglei, Upper Nile, Unity, Warrap, Northern Bahr-el-Ghazal and north-western Western experienced rainfall that was less than 80% less compared to the LTA.

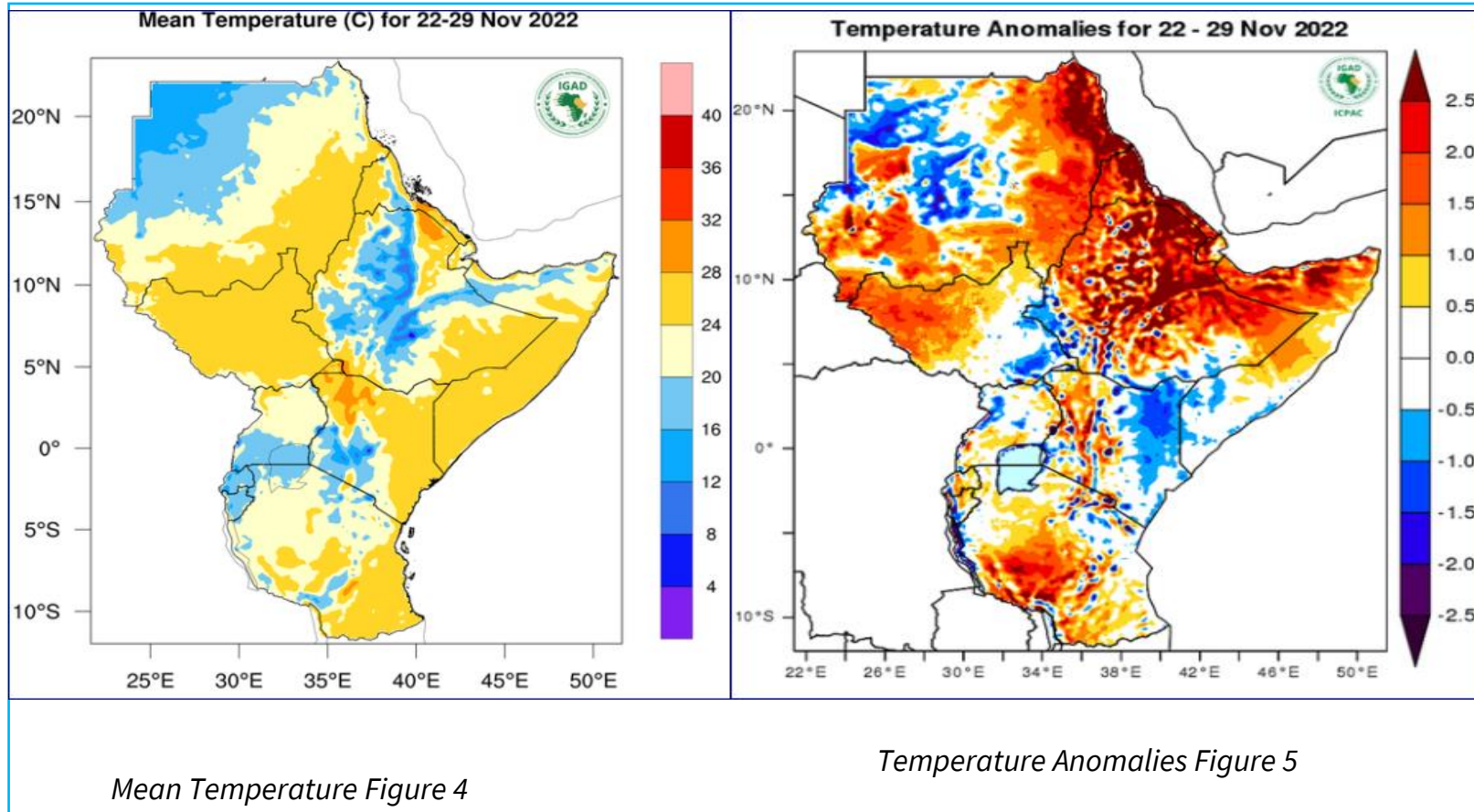
Weekly forecast: 22 – 29 November 2022 (Source: ICPAC)



Rainfall Outlook:

- Light rainfall (less than 50 mm) is expected over most of southern and eastern parts of the country precisely greater Equatoria, Lakes, Jonglei and parts of western Bahr-el-Ghazal
- The northern part is expected to experience dry conditions.
- Compared to long term average (*Figure 3*), wetter than usual conditions are expected over parts of southern South Sudan precisely in southern parts of greater Equatoria

Weekly forecast: 22- 29 November 2022 (Source: ICPAC)



Temperature Outlook:

- Based on Figure 4, Moderate temperatures between 20 - 32°C expected over the country with the southern-most areas bordering Uganda and DRC expected to experience lower temperatures between 20-24 °C
- Compared to the long-term average, warmer than usual temperatures are expected in most parts of South Sudan, except in parts of Eastern Equatoria precisely in greater Kapoeta, Budi, parts of Magwi and southern Torit counties (Figure 5)

FAO weather information services to farmers and for decision support

- **CLIMIS Portal**
 - http://climis-southsudan.org/agromet/rainfall_data
- **Weekly radio talk show programme**
 - <https://www.fao.org/south-sudan/news/detail-events/es/c/1372883/>

Thank you!