

Sector Objective 1: Improve the food security status of assessed food insecure people by emergency humanitarian life-saving and regular life sustaining food assistance

PEOPLE IN NEED

Food & Livelihood Assistance

10.5 Million

Humanitarian Needs Overview (HNO) - 2018

September 2015 8.7 Million
 June 2016 9.4 Million
 September 2016 9.0 Million

LIFE SUSTAINING AND LIFE SAVING FOOD ASSISTANCE (SO1) TARGET

Food Basket, Cash & Voucher - life sustaining **6.5 Million**
 5.5 million targeted through the Sector
 1 million non-HRP

Emergency Response **1.5 Million**
 0.5 million Palestine refugees (Targeted outside the Sector)

FEB 2018 PLAN RESPONSE

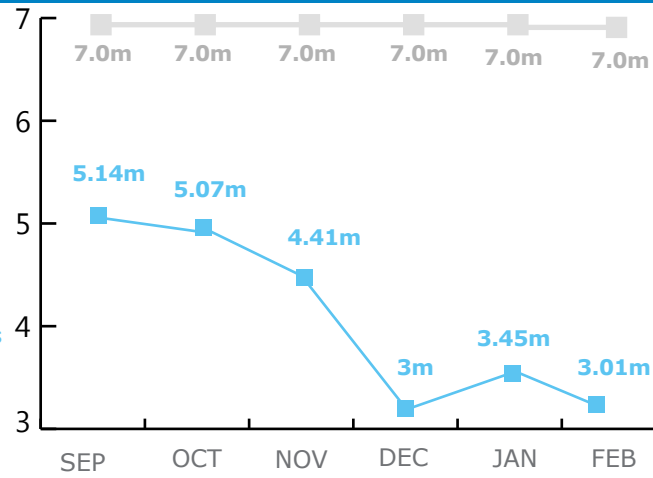
Food Basket, Cash & Voucher **3.01 Million**
 (46%) of SO1 Target
 Humanitarian Response Plan (HRP) - 2018

BENEFICIARIES WHOLE OF SYRIA

SO1 Target
 Planned Beneficiaries



SO1 RESPONSE



BENEFICIARIES REACHED BY MODALITIES AND ORIGIN

February 2018 PLAN CYCLE

3.01 million Food Basket
 2.65 M From within Syria, 0.35 M From neighbouring countries

38,393 Cash and Voucher

Additionally, Bread - Flour and Ready to Eat Rations were also Provided

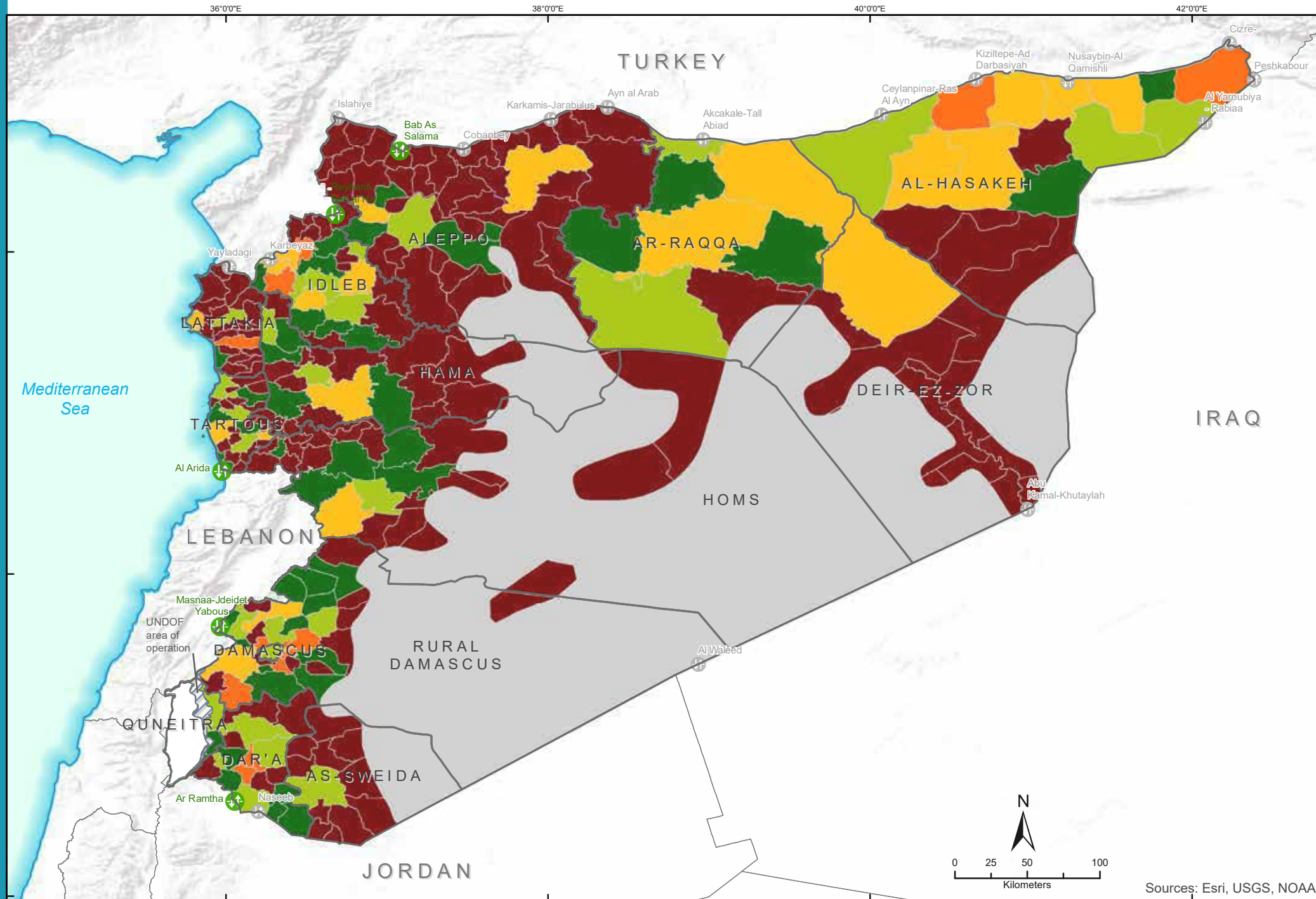
912,258 Bread-Flour
 45,200 From within Syria, 867,058 From neighbouring countries

166,400 Emergency Response with Ready to Eat Ration
 90,400 From within Syria, 76,000 From neighbouring countries

1,765,845 Female Beneficiaries
 715,725 Women, 824,462 Girls

1,540,187 Male Beneficiaries
 648,873 Men, 816,183 Boys

*Note: SADD is based on ratio of 49:51 for male/female due to lack of consistent data across partners. SADD information provided is for food assistance only.



SO1 Beneficiaries by Sub-District

Coverage percentage

- Above 75%
- 51% - 75%
- 26% - 50%
- 1% - 25%
- Zero coverage
- Areas with no or limited population

Border Crossing

Active
 Other

WHOLE OF SYRIA (WoS) FOOD SECURITY SECTOR
 Strengthening Humanitarian Response

Sources: OCHA, WFP, GLCSC, UNGIWG, UNHCR, Geonames
 The designations employed and the presentation of material in the map(s) do not imply the expression of any opinion on the part of WFP concerning the legal or constitutional status of any country, territory, city or sea, or concerning the delimitation of its frontiers or boundaries.

This dashboard is based on best available information at the time of production. Future updates may vary as new information becomes available.

Contact: info.wos@fscluster.org
 Syria Emergency Page on: <http://fscluster.org/syria>

This dashboard does not cover all partners' plans due to non-submission of data by some partners.

Sector Objective 2 & 3: Support the life-saving livelihoods of affected households by increasing agricultural production, protecting and building productive assets and restoring or creating income generating opportunities & Improve the capacity to deliver essential services for improved linkages with value chain through the rehabilitation/ building of productive infrastructure as well as supporting services

PEOPLE IN NEED

Food & Livelihood Assistance

Humanitarian Needs Overview (HNO) - 2018

September 2015	8.7 Million
June 2016	9.4 Million
September 2016	9.0 Million

9 Million

FEB 2018 PLAN RESPONSE

Agriculture and livelihoods

193,047

(3.8%) of SO2+SO3 Target

OVERALL TARGET SO2 & SO3

5.1 Million

5.1 Million

Sector Objective 2 & 3

agricultural production, asset protection & income generating activities

provision of services & restoration of productive infrastructure

Humanitarian Response Plan (HRP) - 2018

SO2 & SO3 RESPONSE

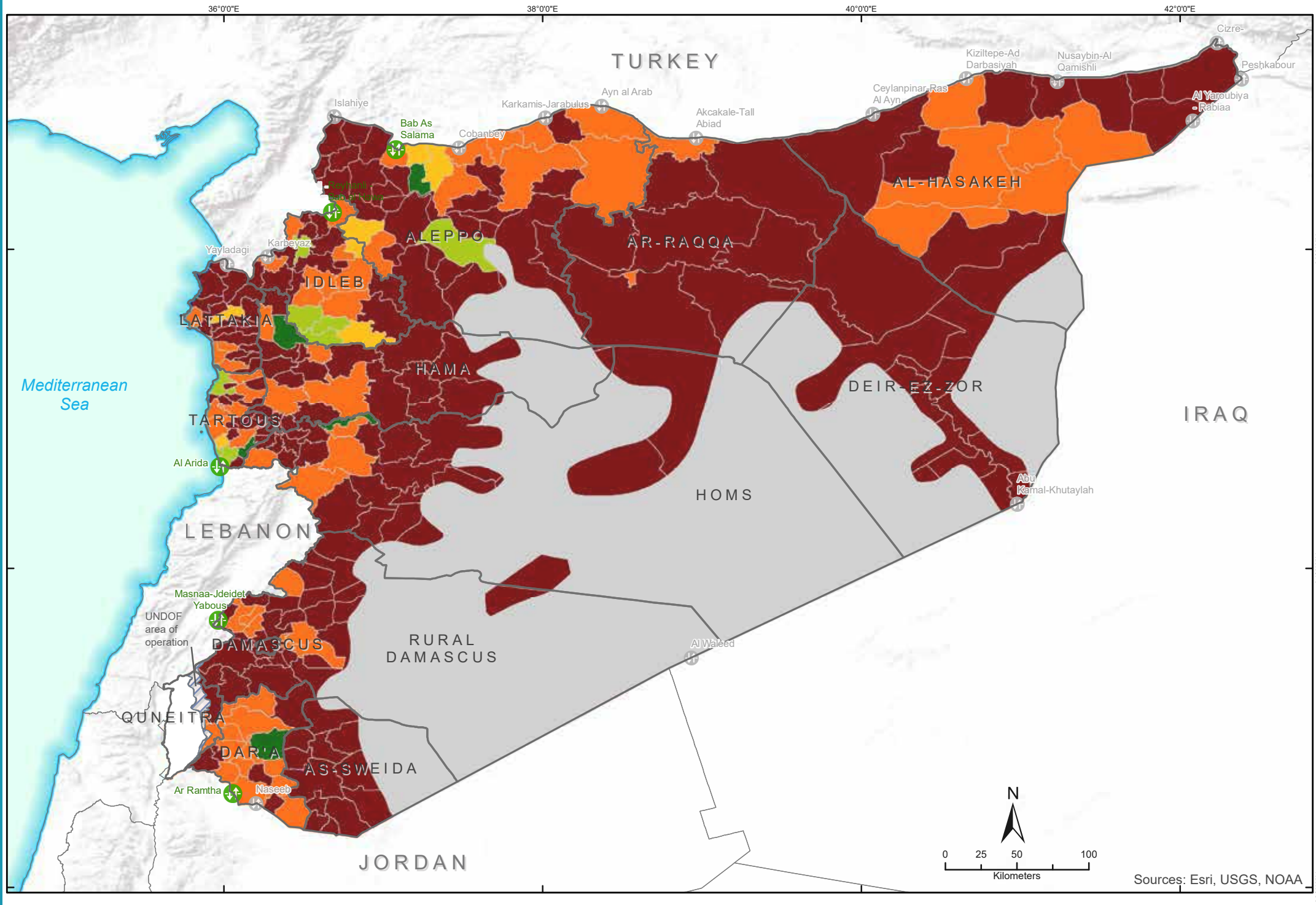
SO2 & SO3 Target: 5.1m

Planned Beneficiaries

Month	Planned Beneficiaries
SEP	0.83m
OCT	1.44m
NOV	0.49m
DEC	0.5m
JAN	0.17m
FEB	0.19m

FEB 2018 PLAN RESPONSE

Activity	From within Syria	From neighbouring countries
Agriculture inputs	31,370	107,775
Small-scale food production	329	329
Asset building and protection	2,060	12,331
Veterinary support	5,480	5,480
Income generation activities	6,600	21,976
Rehabilitation of infrastructure & provision of services	255	77,064



98,937

Female Beneficiaries

45,976 Women

52,961 Girls

94,110

Male Beneficiaries

41,682 Men

52,429 Boys

*Note: SADD is based on ratio of 49:51 for male/female due to lack of consistent data across partners.