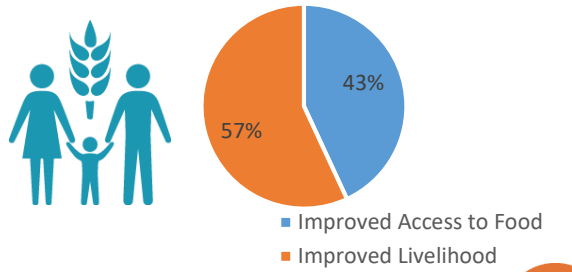


## COUNTRY RESPONSE UPDATE

As of September 2018, FSL cluster partners assisted a total **1.7 million** people through cash based programs. Out of these unique beneficiaries, 43% people received assistance through cluster objective 1 (i.e. improved access to food) and 57% received through objective 2 (i.e. improved livelihoods). A total of 55 counties have been covered by total 58 FSL partners through cash and voucher modalities.

### MODALITY



### TOTAL PARTNERS

**58**

### PEOPLE TARGETED

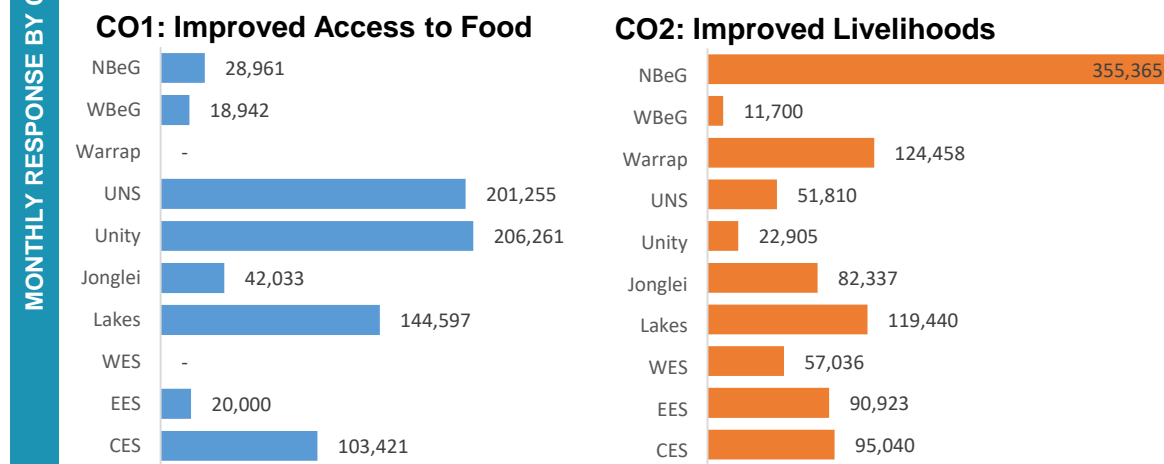
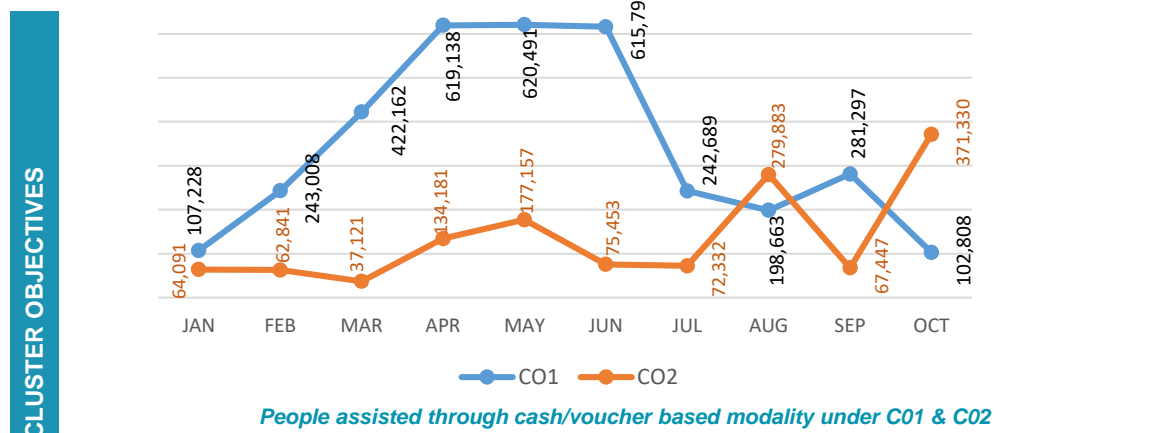
**1.4 M**

### PEOPLE REACHED

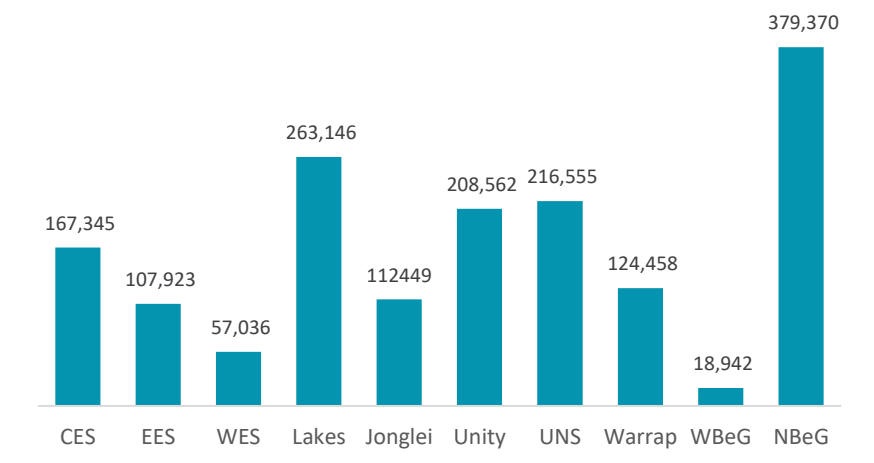
**1.7 M\***  
\* Unique beneficiaries as of Oct 2018

### TOAL FUNDING REQUESTED

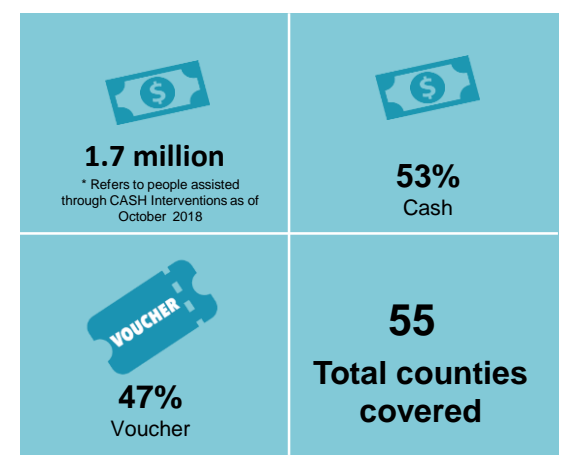
**78 M (USD)**



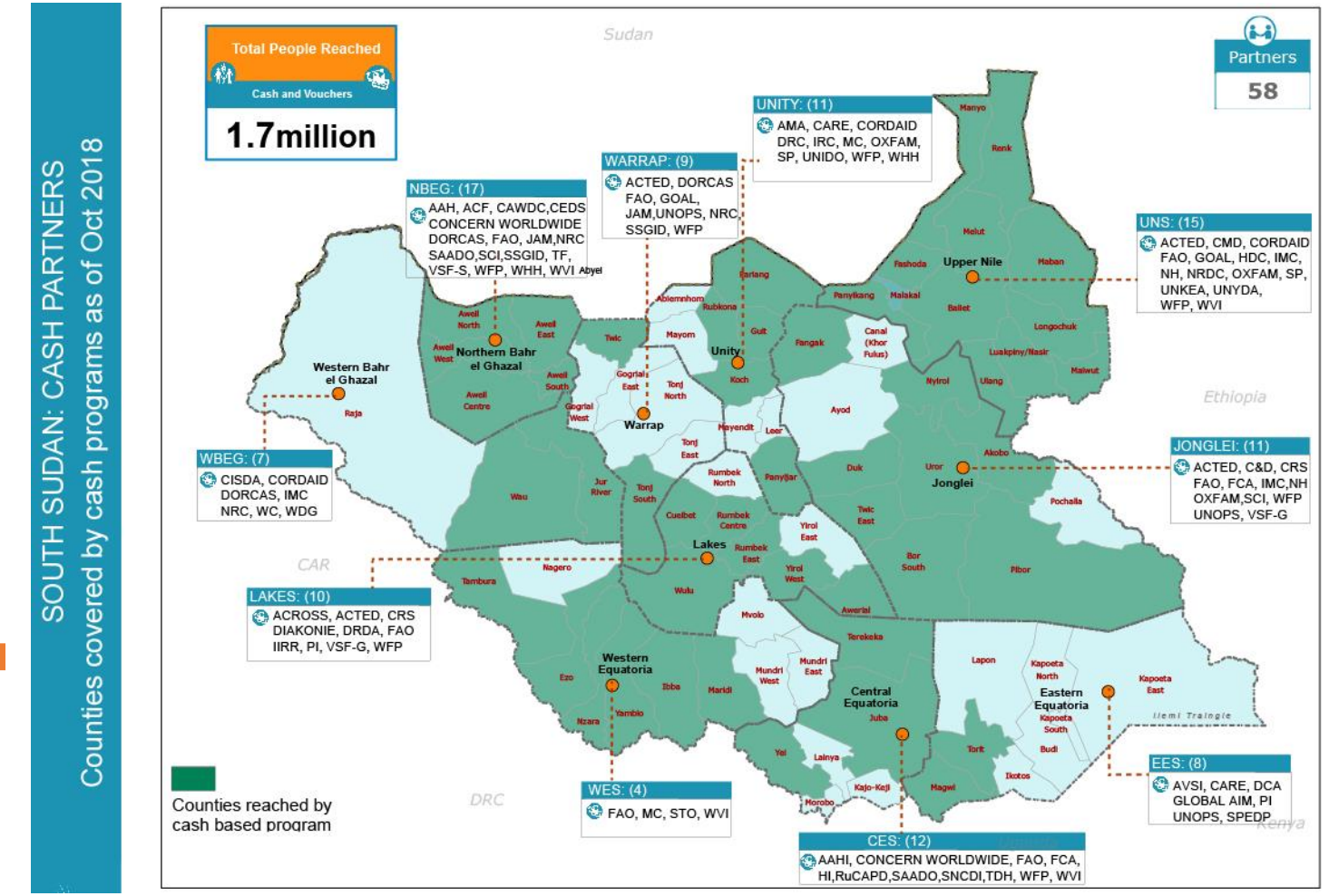
## RESPONSE BY STATE



## RESPONSE BY ACTIVITY



## CASH BASED INTERVENTIONS AND PARTNER PRESENCE MAP



MONTHLY RESPONSE BY CLUSTER OBJECTIVES

SOUTH SUDAN: CASH PARTNERS  
 Counties covered by cash programs as of Oct 2018