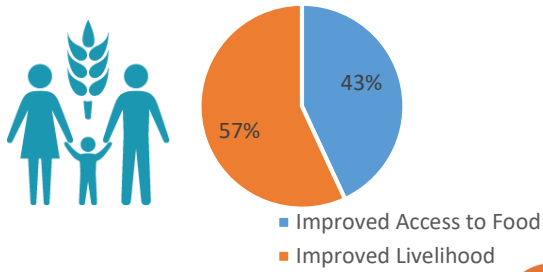


COUNTRY RESPONSE UPDATE

As of November 2018, FSL cluster partners assisted a total **1.7 million** people through cash based programs. Out of these unique beneficiaries, 43% people received assistance through cluster objective 1 (i.e. improved access to food) and 57% received through objective 2 (i.e. improved livelihoods). A total of 55 counties have been covered by total 58 FSL partners through cash and voucher modalities.

MODALITY



TOTAL PARTNERS

60

PEOPLE TARGETED

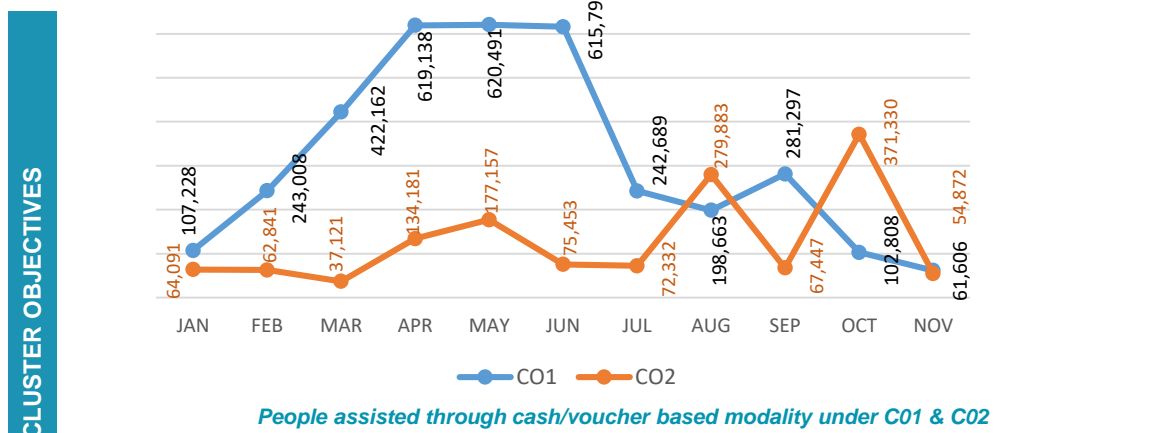
1.4 M

PEOPLE REACHED

1.7 M*
* Unique beneficiaries as of Nov 2018

TOAL FUNDING REQUESTED

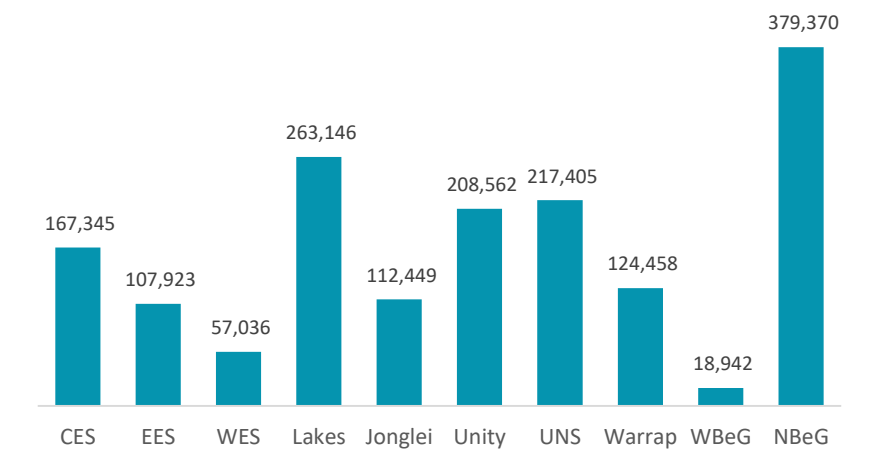
78 M (USD)



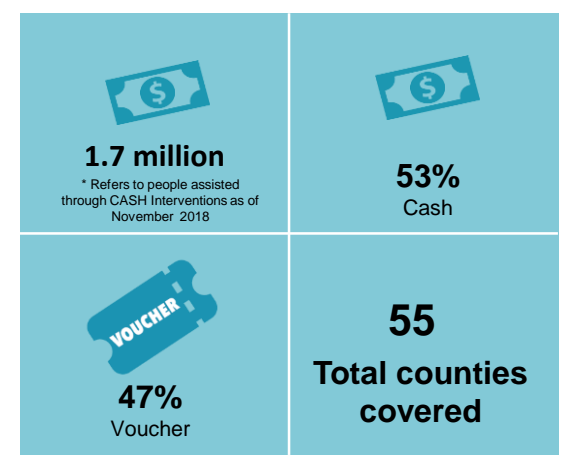
People assisted through cash/voucher based modality under C01 & C02

State	C01: Improved Access to Food	C02: Improved Livelihoods
NBeG	28,961	355,365
WBeG	18,942	11,700
Warrap	-	124,458
UNS	205,255	52,960
Unity	206,261	22,905
Jonglei	42,033	90,737
Lakes	144,597	119,440
WES	-	57,036
EES	20,000	90,923
CES	103,421	95,040

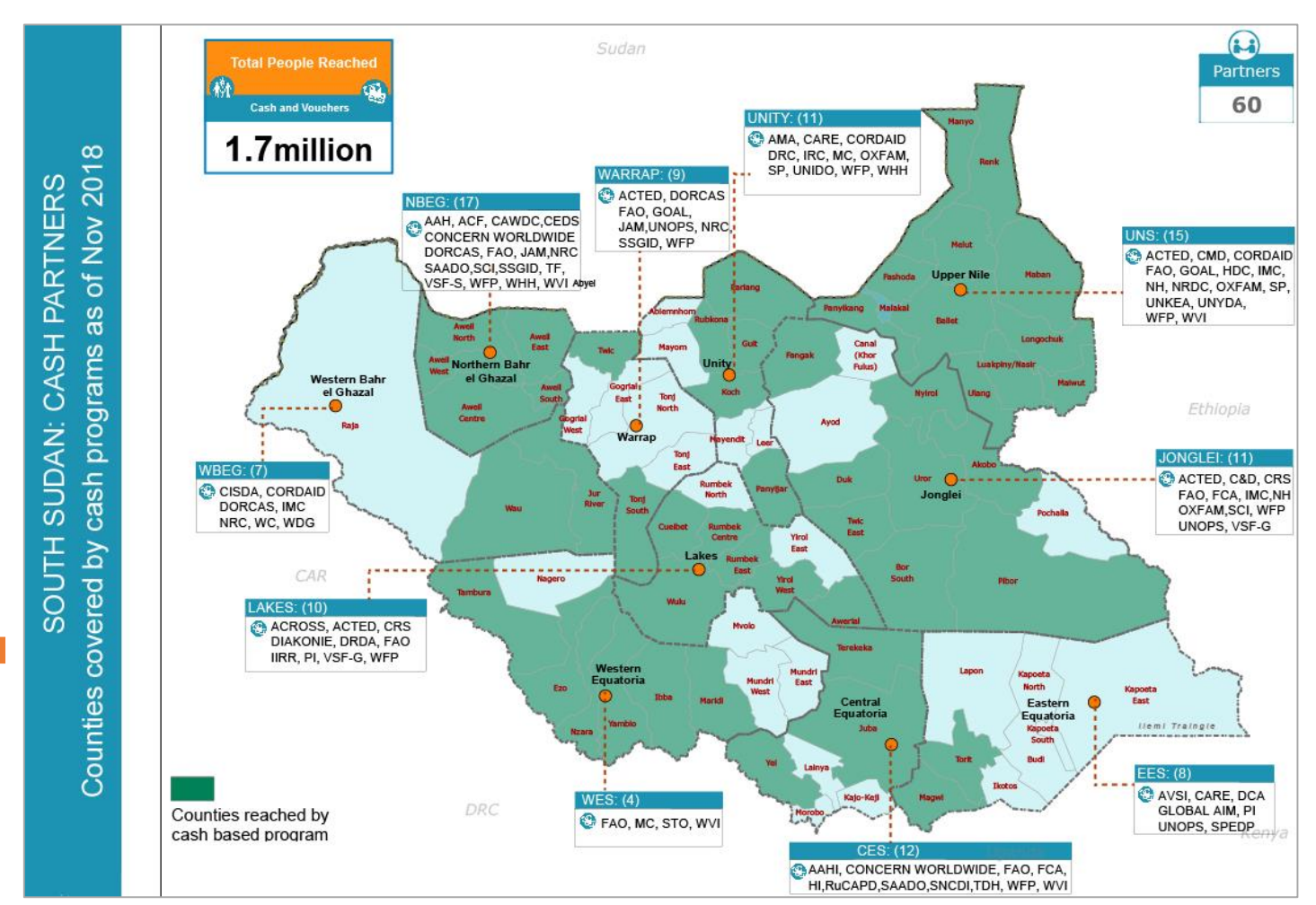
RESPONSE BY STATE



RESPONSE BY ACTIVITY



CASH BASED INTERVENTIONS AND PARTNER PRESENCE MAP



MONTHLY RESPONSE BY CLUSTER OBJECTIVES

SOUTH SUDAN: CASH PARTNERS
 Counties covered by cash programs as of Nov 2018