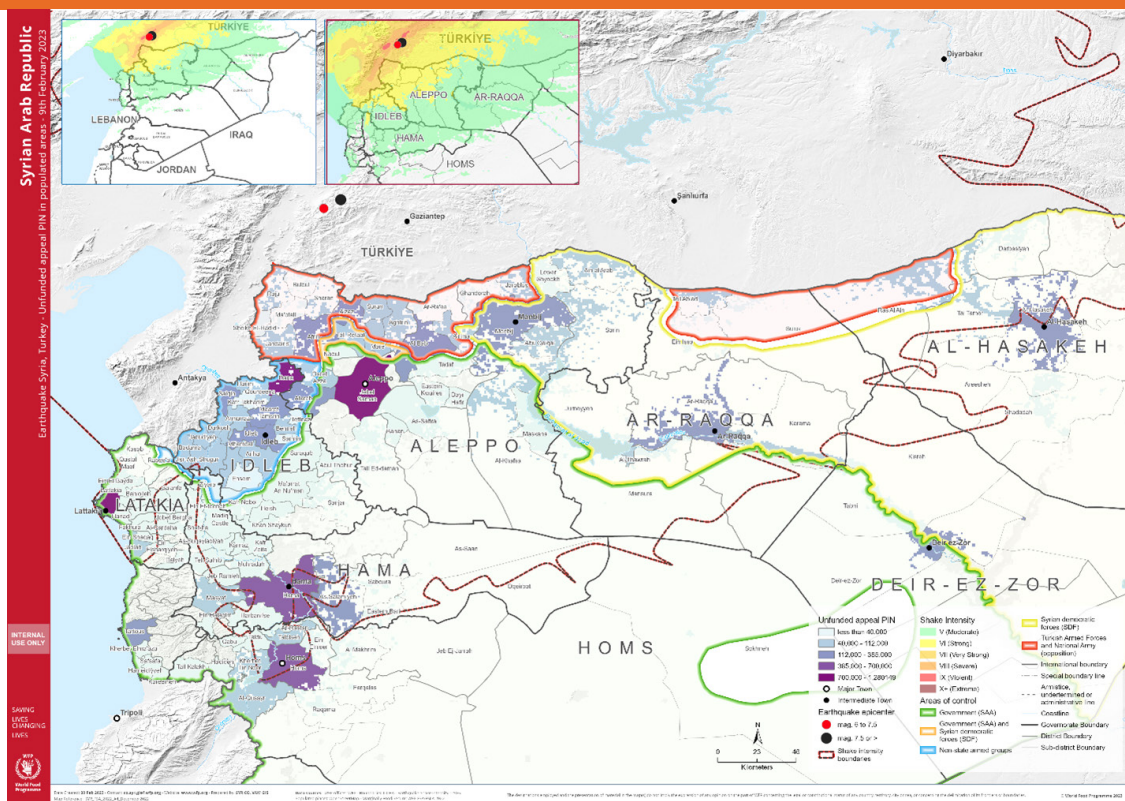


Food Security Sector WoS EQ Response



SITUATION REPORT #4 (13 & 14 FEB-2023)



KEY HIGHLIGHTS

- Additional stock of RTE's, food assistance is required by partners to maintain support to families affected by the earthquake.
- On February 12, UN Emergency Relief Coordinator (ERC) Martin Griffiths visited the Turkish side of Bab Al-Hawa, the single remaining border-crossing authorized by the Security Council for UN aid delivery to north-west Syria.
- In Rural Damascus, sector partners are reporting numbers of displaced persons arriving from governorates struck by the earthquake.
- In Homs Old City 204 persons were evacuated from their already vulnerable due to conflict homes, in fear of the buildings collapsing due to the earthquake.
- Yeast and wheat needs have been expressed across all the governorates
- Needs to have additional crossing points remain high, to facilitate the entry of humanitarian aid.
- Recommendations to have one integrated multi sectoral assessment assembling all available assessments submitted by partners

RESPONSE

In HCT hub

Since February 6th, WFP supported 50,991 beneficiaries with hot meals, 18,135 with RTE's including prevention nutrition supplies and date bars in Aleppo, Latakie, Tartous and Hama. FAS partners supported 43,400 beneficiaries with hot meals, 2,577 with RTE's in Aleppo, Hama and Lattakia. In total the FAS partners reached 117,728 beneficiaries. 18 partners response is ongoing and planning to continue for the people in need affected by the earthquake.

RESPONSE

In Aleppo, Local authorities confirmed that two additional buildings had collapsed because of the earthquake bringing the total number to 56. As of 11 February, Aleppo had a total of 179 collective shelters that were reportedly accommodating over 12,600 families. In addition, a list of damaged bakeries has been published to partners for an urgent support to provide bakeries rehabilitation, and to mitigate from the risk of losing functionality for some bakeries.

In Tartous and Latakia, Search and rescue operations continued under the rubble of four collapsed buildings where dozens of people have been reported missing by their relatives. Local authorities in Latakia reported that at least 6,000 families (about 30,000 people) are currently being hosted in temporary shelters, including Government buildings. The authorities have informed that they will designate permanent shelters for families whose homes have been damaged and do not have alternative shelter options. Further, Latakia Governorate declared that they will evacuate all displaced people who are currently residing in mosques and churches across the Governorate. To date, the Governorate had a total of 22 government buildings, including schools and sports halls, that have been designated as mid-term/long-term collective shelters. In Latakia, three generators operating in three critical bakeries - Demsarkho, Jablah and Al Kerdaha - supported by ICRC went out of service. Replacements are being arranged as soon as possible.

In Homs and Hama, In Hama Governorate, local authorities confirmed that about 250 families were being hosted in the temporary shelters and by local communities. These include 101 families (272 people) from Aleppo Governorate, 32 families (129 people) from Latakia, and seven families (28 people) from Hama. Additionally, seven families (28 people) are being hosted in Mahmoud Othman shelter in Al-Qusour neighbourhood in Homs city, while another 133 families (401 people) are either being hosted by their relatives or have rented houses. The Syrian Arab Red Crescent (SARC) and national NGOs are aiding the affected families including with food, non-food items and health services. Important to mention, displacement and movement continues in urban and cities for people in need coming from areas affected by the earthquake.

In Northwest Syria

In north-west Syria, the situation remains dire, particularly for the 4.1 million people who rely on humanitarian assistance to subsist. As per CCCM second update during the period from 6 February to 14 February 2023 after the devastating earthquake, more than 57,000 displacements took place in north-west Syria, with departures principally occurring from Jandairis, and other notable departures from Salqin, as well as Harim. The main locations where displaced people arrived to included Dana, Salqin and Maaret Tamsrin sub-districts. FSL cluster is recommending partners to provide food assistance to displaced population.

Partners have established reception centers in the Sheikh Bahr area with capacity for 200 families in need of shelter, in Maaret Tamsrin community that can host some 160 families and two other centers in Idleb governorate. Reports of close to 70 reception centers have been opened in both Aleppo and Idleb - In addition, these centers need to be covered by multiple assistance.

People are reported to stay in the open or in shelters while safety of buildings is being assessed and move to areas hit to safer locations.

FSL partners are providing first line response to food needs of people affected by earthquake with RTE rations, cooked meals (primarily in shelter and camps), and emergency CVA (one-off MPC grant). FSL partners are recommended to follow [FSS standard Response Package](#). FSL is coordinating with CWG on the distribution of CVA assistance (MPC, cash/voucher for food, etc.) [based Guidelines for MPC in NWS.](#)

- GOAL is expanding its bakery support programme to cover; Harim, Salqin, Jandairis as part of the emergency response, provide 100% of the flour and yeast inputs so that bread will be sold at a very low price.

Around 72,123 people in Northwest Syria have been assisted with 14,727 RTEs (lasting for one week) through WFP partners in Idleb, Harim, Dana, Benesh, Jandairis, Kafr Takharim, Maaret Tamsrin, Saraqeb, Taftanaz, Jisr-Ash-Shugur, Armanaz, Kafr Takharim, Azaz, Jarablus. 3,934 families will be assisted in the coming days.

WFP through its cooperating partners has resumed General food distribution.

- TAS Established a kitchen and provided hot meals to the affected people in Azaz and areas surrounding Jandairis with capacity to provide up to around 1000 meal per day

The FSL partners reached in total 123,673 beneficiaries with RTEs (mainly in: in Jandairis, 11,567 in Salqin, in Al-Attarib, in Dana). Additionally, 76,459 cooked meals (35,920 in Jandairis and 3,280 in Harim), and 69,350 beneficiaries received one-off MPC grants (18665 in Harim, 14,605 in Jandairis). In terms of planning, NGO partners plan to distribute subsidized bread to 69,360 beneficiaries and 7,300 families (almost 37,000 individuals) will also receive MPC support in the coming days. The district with the highest reach is Harim, -

Partners are recommended to input their planned response into the Emergency Response tracker for operational coordination, to avoid duplication and to cover gaps.

A skype group among partners for operational coordination has been set up All Partners are exchanging information on their response, Assessment reports and situation reports, also the FSL Cluster is conveying guidance, coordination messages through this group in addition to emails

COORDINATION

In HCT hub

On February 14th the sector conducted the third national EQ emergency coordination meeting, more than 25 partners are coordinating closely with the food security and agriculture sector at national level, as well as, sub-national regular close coordination in Aleppo, Lattakia , Homs and Hama. FAS is conducting one emergency coordination meeting every two days to enhance coordination and harmonization among partners regarding assessments and response.

ASSESSMENTS

In HCT hub

An assessment Tracker was created which looks into basic information that will help in enhancing the coordination at this stage among sector partners.

- COOPI: The organization team is assessing the capacity of responding to MPCA and they will update the assessment tracker.
- UNRWA: The team conducted multi-sector assessments in both relevant affected governorates, and they are providing fresh meals in Lattakia and Aleppo.
- WFP VAM team: Is working on developing an assessment and appreciates sharing of any completed assessments on the EQ response.
- Coastal: Intersectoral Assessment to Lattakia and Jableh has been conducted on 10th Feb 2023 and the report will be shared by OCHA once completed.
- Central: Multi-sectoral assessment in Hama and rural Hama was conducted.
- Oxfam is also studying the feasibility of multipurpose cash assistance in areas affected a needs assessment of the displaced persons arriving to rural Damascus from affected governorates within the upcoming two days. Please find here the [assessment tracker](#) for your reference.

In Northwest Syria

- Partners are conducting rapid needs assessment to inform their response
- Assessment tracker is available EQ 2023 Assessment Tracking Sheet - [Google Sheets](#)
- REACH Rapid Needs Assessment on earthquake in NWS expected to be finalized next week Also IMMAP is implementing a full assessment for the bread and bakery facilities to Identify the conditions of those facilities and the volume of damage for those facilities.
- Joint Market assessment targeting vendors by REACH Mercy Corps Goal Shafak Ataa with data collection next week ICCG recommended to assemble all partner assessments in one integrated and comprehensive assessment which could be used among all partners, and it should be inter sectoral
- To support the humanitarian response in Türkiye and Syria, IMPACT has deployed data gathering and analysis capacities to provide aid actors with timely information.
- To support ongoing decision-making around cash feasibility for the earthquake response, REACH produced a new market analysis map. Preliminary results from the REACH RNA (with data collected from over 370 communities so far) suggest that for now, markets in these areas are resilient.

Distributing emergency food purchased by WFP to displaced people in Aleppo. © Al-Ihsan Charity



CHALLENGES

- The World Food Programme is running out of stock in northwest Syria and has appealed for more corridors between Syria and Turkey to be opened. Currently, the United Nations only has one Approved Humanitarian crossing point (Bab Al Hawa) Between Syria and Turkey between the two countries Bab al-Hawa.
- Overall, WFP requires US\$ 1.5 billion to sustain its operations until the end of 2023. Without additional funding, WFP would be forced to cut up to 70 percent of beneficiaries from the General Food Assistance programme in July to avert a complete pipeline break. Nearly 3.8 million people (including 900,000 people in North-Western Syria) could stop receiving food assistance
- Among the operational challenges that cash and other programming are likely to face in these early weeks is the temporary disruptions in PTT branch services in NWS. OCHA and the Cash Working Group are engaging with PTT to get more information as to when branch operations will be restored and solutions to other bottlenecks.
- In NWS some partners reported concern for shortages of some food items, especially canned food in the market, in areas like Sarmada and Dana, and decreased availability of wheat flour



Residents and rescuers search for victims and survivors amidst the rubble of collapsed buildings following an earthquake in Aleppo. © WFP/Hussam Al Saleh

For more information

Mohie Alwahsh
WoS Food Security Sector Coordinator
mohie.alwahsh@wfp.org

Website

<https://fscluster.org/syria>



WHOLE OF SYRIA (WoS)
FOOD SECURITY
SECTOR