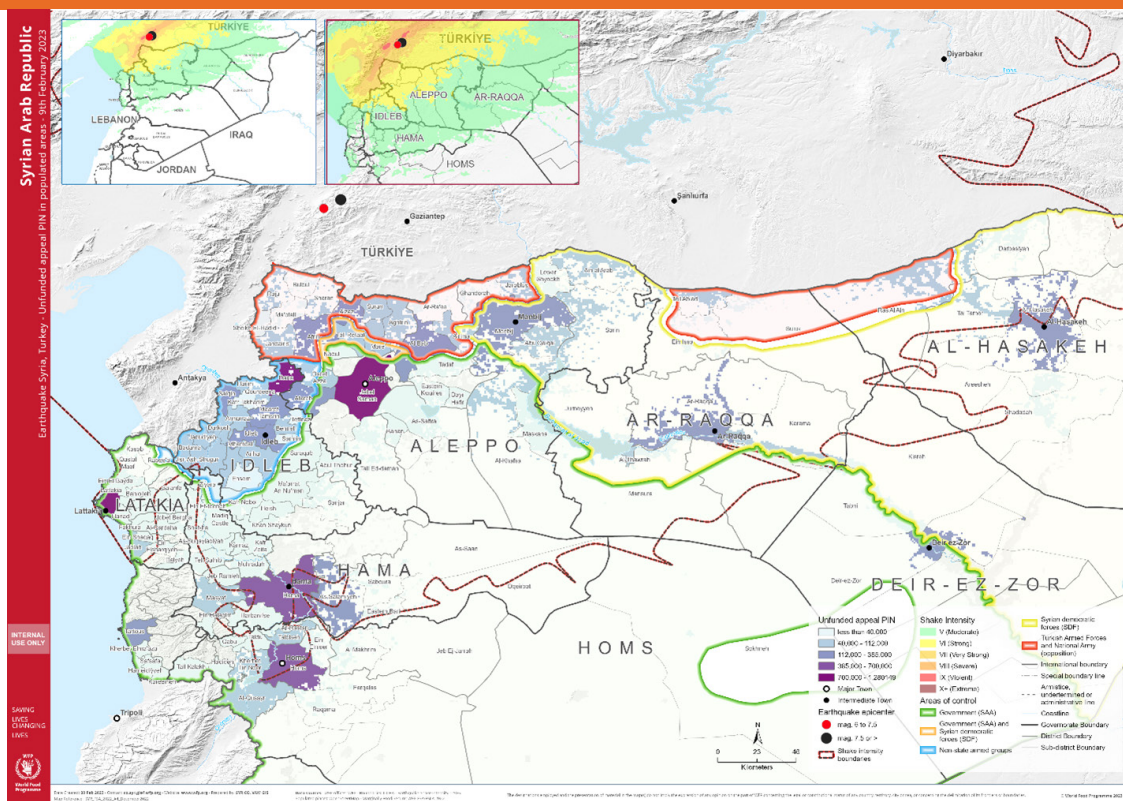


# Food Security Sector WoS EQ Response



## SITUATION REPORT #3 (11 & 12 FEB-2023)



## KEY HIGHLIGHTS

- In Rural Damascus, sector partners are reporting numbers of displaced persons arriving from governorates struck by the earthquake.
- In Homs Old City 204 persons were evacuated from their already vulnerable due to conflict homes, in fear of the buildings collapsing due to the earthquake.
- **On Friday 10th of February**, 14 trucks carrying humanitarian aid were allowed to enter northwest Syria through Bab al-Salama, al-Rai and Bab al-Hawa border crossing points. Turkish authorities are discussing opening another crossing into Government-held areas in Idlib.
- **Washington recently announced** a blanket exemption for all transactions related to earthquake relief items to support the immediate response in Syria for six months.

## RESPONSE

### In HCT hub

WFP and their partners supported 27,930 beneficiaries with hot meals. FSS partners provided 18,746 RTEs - including preventive nutrition supplies and date bars - in Aleppo, Latakia, Tartous, and Hama, since the 6th of February, in total 23 partners informed the sector on planning to support with food emergency assistance. In addition, partners supported 3,325 beneficiaries with Food Baskets distribution and 1000 beneficiaries with MPC. Today (12th of February) FAS meeting at a national level took place to coordinate resources and responses planned by multiple key FAS partners. In Aleppo, around 300 collective centers have been established, the government has established the operations room to enhance the coordination among partners on a subnational level. An Online tracker for all types of interventions has been shared with all subnational sector partners to provide inputs and is updated every 10 mins. Any partner willing to intervene has to coordinate with the governor's office and the operation room. The emergency coordinator will visit Aleppo tomorrow and will participate in the AHCT meeting and in the crossline convoy to Saramada. AVSI is providing RTEs in 1 school in Aleppo with 1300 HHs. The next step will be cash/voucher intervention to encourage the affected population to go back to their homes. UNRWA has also provided fresh meals in Aleppo.

## RESPONSE

In the coastal area, during the first two days after the earthquake people were settling in mosques, after that the governor moved all people to official shelters. The governor's office established the operations room to enhance the coordination between response partners. All NGOs are asked to check with the room before any intervention. WFP and ICRC asked the room for exceptions to distribute food and the approval is yet to be obtained. There is a need for bread distribution and generators provision, ICRC has supported with generators and is exploring the possibilities for cash for work is ongoing on a subnational level. UNRWA has provided fresh meals in Lattakia.

Other governorates have extended support to the central area which included humanitarian assistance in many forms.

### In Northwest Syria

the situation remains dire, particularly for the 4.1 million people who rely on humanitarian assistance to subsist. It is reported that significant numbers of people remain trapped under the debris of collapsed homes. Flooding has been reported in displacement camps due to inclement winter weather.

More than 30,000 displacements took place in north-west Syria between 6 February and 8 February, reported the Camp Coordination and Camp Management (CCCM) cluster. Departures principally occurred from Jandairis, Salqin and Harim. The main locations where displaced people arrived included Dana, Maaret Tamsrin sub-districts. It is reported that at least four interim shelters are being established to host families from Idleb. Partners have established reception centers in the Sheikh Bahr area with capacity for 200 families in need of shelter, in Maaret Tamsrin community that can host some 160 families and two other centers in Idleb governorate.

People are reported to stay in the open or in shelters while safety of buildings is being assessed and move to areas hit to safer locations.

Partners are providing first line response to food needs of people affected by earthquake with RTE rations, cooked meals (primarily in shelter and camps), and emergency CVA (one-off MPC grant).

FSL partners are recommended to follow [FSS standard Response Package](#)

FSL is coordinating with CWG on the distribution of CVA assistance (MPC, cash/voucher for food, etc.) [based Guidelines for MPC in NWS](#).

While waiting for comprehensive Rapid Market Assessment, preliminary reports by partners indicate that some markets have been partially damaged but are functioning, particularly in Idlib.

Around 44,430 people in Northwest Syria have been assisted with 8,886 RTEs (lasting for one week) through WFP partners in Idleb, Harim, Dana, Benesh, Jandairis, Kafr Takharim, Maaret Tamsrin, Saraqeb, Taftanaz, Jisr-Ash-Shugur, Armanaz, Kafr Takharim, Azaz, Jarabulus.

The FSL partners reached in total 142,226 beneficiaries with RTEs (11,567 in Salqin, 7,425 in Al-Attarib, 49,845 in Dana, and 2,380 in Harim). Additionally, 62,835 cooked meals (29,200 in Jandairis and 3,280 in Harim), and 49,985 beneficiaries received one-off MPC grants. In terms of planning, NGO partners plan to distribute subsidized bread to 64,860 beneficiaries and 5,200 families (almost 26,000 individuals) will also receive MPC support in the coming days. The district with the highest reach is Harim, while lower reach is in the heavily earthquake-stricken district of Afrin.

Below table outlines areas covered by FSC partners as reported in the [online Emergency tracker tool](#)

Locations	Bread Distribution	Cash Response	Cooked Meals	Ready to Eat Ration
<b>Afrin</b>	<b>105,410</b>	<b>12,850</b>	<b>29,200</b>	<b>31,690</b>
Afrin				500
Jandairis	105,410	12,850	29,200	31,190
<b>Al Bab</b>			<b>11,000</b>	<b>10,615</b>
Al Bab			11,000	8,630
A'rima				1,540
Tadaf				445
<b>Ariha</b>	<b>4,250</b>			<b>250</b>
Ariha	3,200			
Ehsem	1,050			
Mhambal				250
<b>A'zaz</b>	<b>151,000</b>	<b>2,145</b>	<b>8,735</b>	<b>7,730</b>
A'zaz	151,000	2,145	6,735	7,730
Suran			2,000	
<b>Harim</b>	<b>36,057</b>	<b>21,350</b>	<b>10,100</b>	<b>69,798</b>
Armanaz	4,750	4,200	450	944
Dana	7,957	7,235	3,395	49,845
Harim	6,125	4,415	3,280	2,380
Kafr Takharim				1,431
Qourqeena	4,225		1,250	3,631
Salqin	13,000	5,500	1,725	11,567

## RESPONSE

Locations	Bread Distribution	Cash Response	Cooked Meals	Ready to Eat Ration
<b>Idleb</b>	<b>7,050</b>	<b>2,100</b>		<b>9,085</b>
Bennsh				95
Idleb	2,250			2,050
Maaret Tamsrin	4,800	2,100		6,200
Saraqab				500
Teftnaz				240
<b>Jarablus</b>		<b>635</b>		
Jarablus		635		
<b>Jebel Saman</b>	<b>6,625</b>	<b>9,255</b>	<b>1,300</b>	<b>7,447</b>
Atareb	6,625	7,155	1,300	7,425
Daret Azza		2,100		22
<b>Jisr-Ash-Shugur</b>	<b>7,762</b>	<b>1,650</b>	<b>2,500</b>	<b>5,611</b>
Darkosh				1,394
Janudiyeh	6,250			2,656
Jisr-Ash-Shugur	1,512	1,650	2,500	1,561
<b>Grand Total</b>	<b>318,154</b>	<b>49,985</b>	<b>62,835</b>	<b>142,226</b>

Partners are recommended to input their planned response into the Emergency Response tracker for operational coordination, to avoid duplication and to cover gaps.

A skype group among partners for operational coordination has been set up

## ASSESSMENTS

### In HCT hub

An assessment Tracker was created which looks into basic information that will help in enhancing the coordination at this stage among sector partners.

Oxfam: the team assessed 15 collective shelters in Aleppo and included cash for WASH activities; the findings will be shared with the sector once completed.

In addition, the team did a technical assessment for bakeries in Aleppo and Hama in coordination with WFP and ICRC.

Oxfam is also studying the feasibility of multipurpose cash assistance in areas affected a needs assessment of the displaced persons arriving to rural Damascus from affected governorates within the upcoming two days.

COOPI: The organization team is assessing the capacity of responding to MPCA and they will update the assessment tracker.

UNRWA: The team conducted multi-sector assessments in both relevant affected governorates, and they are providing fresh meals in Lattakia and Aleppo.

WFP VAM team: Is working on developing an assessment and appreciates sharing of any completed assessments on the EQ response.

Coastal: Intersectoral Assessment to Lattakia and Jableh has been conducted on 10th Feb 2023 and the report will be shared by OCHA once completed.

Central: Multi-sectoral assessment in Hama and rural Hama was conducted.

### In Northwest Syria

Partners are conducting rapid needs assessment to inform their response

Assessment tracker is available EQ 2023 Assessment Tracking Sheet - [Google Sheets](#)

REACH Rapid Needs Assessment on earthquake in NWS expected to be finalized next week

Market assessment by REACH and Cash Working Group to be conducted next week

Joint Market assessment targeting vendors by REACH Mercy Corps Goal Shafak Ataa with data collection next week

## CHALLENGES

- The World Food Programme is running out of stock in northwest Syria and has appealed for more corridors between Syria and Turkey to be opened. Currently, the United Nations only has one approved crossing between the two countries – Bab al-Hawa.
- Overall, WFP requires US\$ 1.5 billion to sustain its operations until the end of 2023. Without additional funding, WFP would be forced to cut up to 70 percent of beneficiaries from the General Food Assistance programme in July to avert a complete pipeline break. Nearly 3.8 million people (including 900,000 people in North-Western Syria) could stop receiving food assistance
- In Aleppo Markets are impacted severely by the earthquake, the prices are increasing, and commodities are lost. The poultry production factory has been impacted by the earthquake in rural Aleppo.
- In central area soil dam has been impacted by the EQ which caused a flood.
- Among the operational challenges that cash and other programming are likely to face in these early weeks is the temporary disruptions in PTT branch services in NWS. OCHA and the Cash Working Group are engaging with PTT to get more information as to when branch operations will be restored and solutions to other bottlenecks.



1500 RTEs on the way to coastal area in Syria on the 11th of February ©WFP Syria

For more information

**Mohie Alwahsh**  
WoS Food Security Sector Coordinator  
[mohie.alwahsh@wfp.org](mailto:mohie.alwahsh@wfp.org)



**WHOLE OF SYRIA (WoS)**  
**FOOD SECURITY**  
**SECTOR**