

Food Security Sector WoS EQ Response

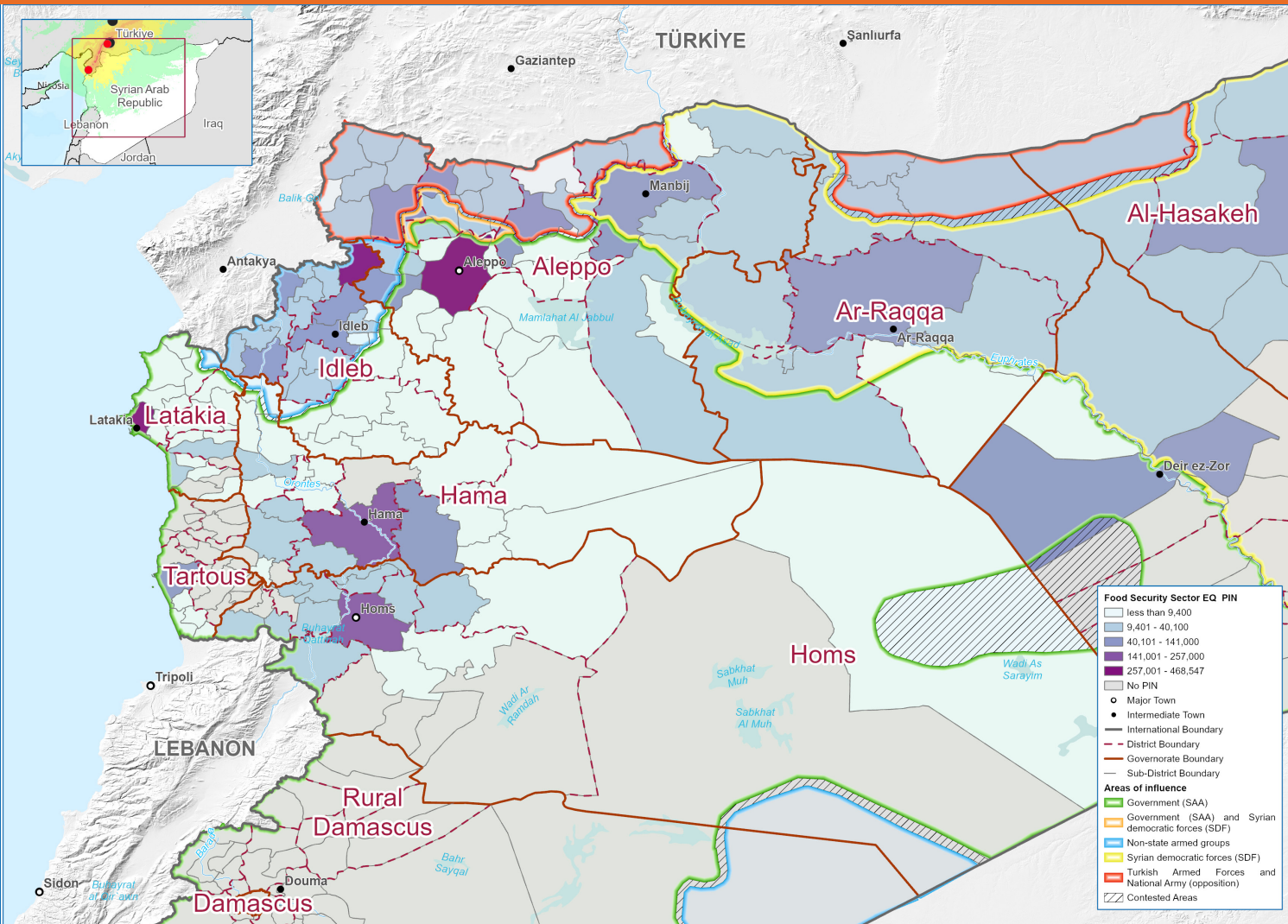


WHOLE OF SYRIA (WoS)
FOOD SECURITY
SECTOR

SITUATION REPORT #9 (26 FEB - 03 MAR 2023)

Syrian Arab Republic

Earthquake Syria - Food Security Sector EQ PIN - 20 February 2023



SAVING
LIVES
CHANGING
LIVES



Date Created: 21 Feb 2023 - Contact: co.syr.gis@wfp.org
Website: www.wfp.org - Prepared by: SYR CO, VAM GIS/Map Reference: Syria_Earthquake_Feb_2023

Data sources: WFP offices; WFP - Boundaries: WFP / OCHA - Unfunded appeal: WFP

The designations employed and the presentation of material in the map(s) do not imply the expression of any opinion on the part of WFP concerning the legal or constitutional status of any country, territory, city or sea, or concerning the delimitation of its frontiers or boundaries.

© World Food Programme 2023

KEY HIGHLIGHTS

- The Food Security Sector at WoS is launching the EQ sector strategy response plan, focusing on regular food assistance response to most affected people from the EQ, with a timeline of 3 to 6 months starting from March 2023, and to phase out from urgent and emergency food assistance.
- The WoS Food Security Sector is advocating for funding and resources to support with assistance 800,000 people in need affected by the EQ for 6 months regular food assistance with any type of modalities, early funding gaps have been identified.
- WoS Food Security Sector released regular food assistance EQ recommendations to support partners in responding to the EQ people in need more details in the recommendation [here](#)

In HCT hub

Since February 6th, WFP supported 50,495 Beneficiaries with RTEs including prevention nutrition supplies and date bars in Aleppo, Lattakia, Tartous and Hama. FAS partners supported 48,193 beneficiaries with RTEs in Aleppo, Hama and Lattakia.

FAS partners also supported 418,858 Beneficiaries with hot meals. 36 partners' response is ongoing and planned to continue for the people in need affected by the earthquake

The Food Security and Agriculture Sector in HCT has started close coordination with partners to kick off the EQ sector strategy response plan, one national meeting including all FAS partners will take place in Damascus on Sunday, March 5th, to map the needs related to EQ and ongoing response, as well as identify the gaps remain using the traffic light, in particular shelters and host communities areas, the FAS is planning to conduct two major sub-national FAS meetings, in Latakia and Aleppo with partners working in each area to follow up on the EQ sector strategy response plan, and ensure the 3-6 months regular food assistance plan and response matrix is confirmed among all stakeholders, the sub-national FAS partners are working closely with the operational rooms established in each governorate.

In Northwest Syria

FSL cluster partners are providing emergency response to the food needs of people affected by the earthquakes, including ready-to-eat (RTE) food (which covers the food needs of a family for one week), cooked meals, emergency cash vouchers and multi-purpose cash (MPC).

Over the last week, 45,886 people have been reached through RTEs distributions. 45 FSL partners reported distributing RTE ration. The FSL cluster reported that around 523,816 cumulative people have been reached with RTEs and 44,230 have received HEB since the beginning of the response post-earthquakes

54,700 people received cash and voucher assistance for food.

Partners distributed one-off emergency food baskets to 75,480 affected people who have access to cooking facilities.

5 partners distributed supplementary food – mainly bread support (free or subsidized bread) reaching over 44,000 people in the last week, 61% of them with a one-off distribution.

23 partners distributed 533,884 cooked meals and 72,771 the last week, 73% of the cooked meals reported as one-off distribution.

Food parcels distribution to persons affected by the earthquake in Aleppo by one of the Food Security Sector Partners © COOPI Syria



ASSESSMENTS

In HCT hub

According to AAH assessment in Aleppo Despite the fact, the exchange rate in the black market recorded a decrease in its price but the food items are still at the same level of cost. According to some market actors, the high food prices are attributed to damages that happen to the main market in Latakia where some items came from Latakia, and also attributed to the fear of sending any item during this earthquake crisis from Latakia to Aleppo. According to WFP Syria market update, as of the second week of February 2023, week after the disaster, nominal price of key commodities in the food basket (bread, lentils, vegetable oil, sugar and rice) increased in almost all of the heavily hit governorates (of Aleppo, Hama, Idleb and Latakia) compared to the week before the disaster. As well as bakeries need for rehabilitation which affected by the earthquake in Aleppo areas.

In Northwest Syria

Based on REACH market assessment [REACH Situation Overview of the Joint Rapid Assessment](#) of Markets markets in NWS are resilient and overall functioning.

CHALLENGES

- In HCT: partners continue to report challenges in availability of wheat/flour for bread.
- In HCT: urgent funding is required to replenish food stocks and scale up the response
- In HCT: sustainability of funding for the food security response is needed for the next 3-6 months to address needs of EQ affected people and maintain regular food assistance.
- In HCT: partners have been reporting damage to mills and bakeries due to the EQ.
- In the coastal area, the constant change of the functioning shelters has impacted the needs mapping, it was reported by partners that some of the shelters are emptied out right after being assessed.
- In NWS:
 - 75% of hot-meals and over 50% of supplementary food (bread distribution) reported as one-off, not sustained over time
 - Partners continuing regular food assistance programming
 - Limited availability of wheat flour for baking bread
 - People reached with emergency food assistance decreased from week one to week three after EQ

For more information

WoS Food Security Sector Coordinator
mohie.alwahsh@wfp.org

NWS FSL Cluster
martina.iannizzotto@wfp.org

Aleppo FAS Sub-national
abdullah.alshaghel@wfp.org

Latakia and Tartous FAS sub-national
mohammed.krimeed@wfp.org

Homs and Hama FAS sub-national
suzanne.alfares@wfp.org

Website

<https://fscluster.org/syria>



WHOLE OF SYRIA (WoS)
FOOD SECURITY
SECTOR