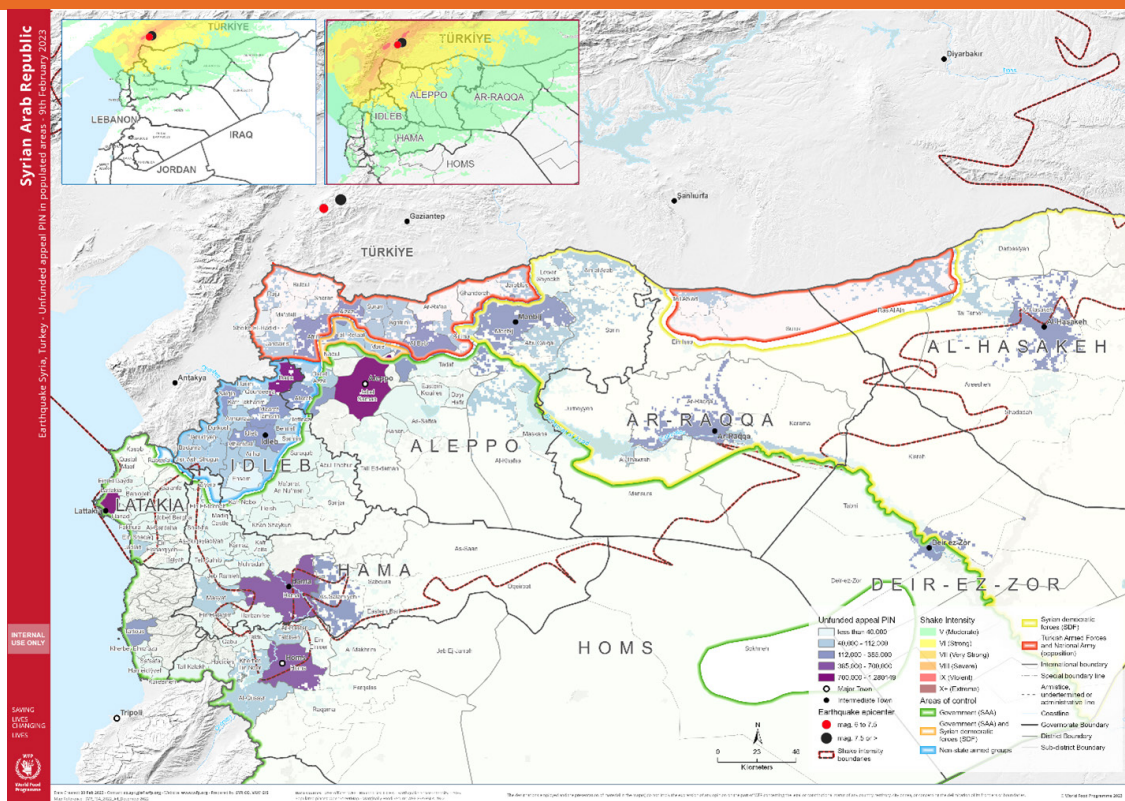


Food Security Sector WoS EQ Response



SITUATION REPORT #6 (16 FEB-2023)



KEY HIGHLIGHTS

- As of 13 February, 10 out of 11 civil registry offices in Aleppo have resumed service provision. However, some still need light repairs to ensure they are operating to their full capacity. The Syrian Bakeries Corporation undertook a rapid assessment of the bakeries across Syria. In Aleppo, 32 bakeries were assessed, 20 have been found to be affected by the earthquake (six in the city and 14 in rural areas).
- Three new collective shelters were designated in Hama Governorate on 14 February bringing the total number to nine.
- As of 14 February, 213 families arrived at Homs, 196 of which are hosted by local community members in the city and rural areas while 17 have been temporarily accommodated in Mahmoud Othman collective shelter.
- In Rural Damascus, assessments of buildings' structural integrity in Duma, Harasta, Adra, Jaramana, Qudsayya, Yelda, Hamuryieh, Saqba, and Hameh are ongoing. In Duma, three buildings were demolished so far. The Governorate designated three collective shelters in Harjala village, Adra city, and Ad-Dweir to accommodate families evacuated from the ramshackle buildings that will be demolished.
- In As-Sweida Governorate, around 21 families have arrived from Aleppo and Lattakia, and are hosted by their relatives. So far 118 families were displaced from earthquake-affected areas in Aleppo and Lattakia to Rural Damascus, Damascus and As-Sweida.
- A Flash Appeal was released by OCHA on 15th Feb 2023 and has been shared with sector partners, 4 million people impacted directly or indirectly by the EQ in HCT and NWS

In HCT hub

Since February 6th, WFP supported 70,308 beneficiaries with hot meals, 24,245 with RTEs including prevention nutrition supplies and date bars in Aleppo, Latakia, Tartous and Hama. FAS partners supported 44,837 beneficiaries with hot meals, 4,131 with RTEs in Aleppo, Hama and Lattakia. In total the FAS partners reached 149,700 Beneficiaries. 18 partners response is ongoing and planning to continue for the people in need affected by the earthquake.

- The main need is food, there is a potential for Cash intervention taking the protection risk and concerns into account with the possibility of changing it to RTEs and fresh meals.
- Oxfam is planning for interventions after the government is opening schools and evacuate IDPs from these schools in the next week, Oxfam team also assessed bakeries in Aleppo, Hama, and Lattakia. And one Bakery in Aleppo has been initially targeted, and the location will be shared with FAS partners. In the coming two weeks the team will also try to assess the feasibility of medium and long-term interventions relevant to the rehabilitation of irrigation canals and coordinate with AWG. Oxfam also is looking to assist the hosted families in order to support small-scale farmers in rural areas and also people who lost their businesses in urban areas due to the EQ.
- GOPA: there is a plan to distribute RTEs and fresh MEALS in Aleppo and Lattakia.
- ZOA: Today or tomorrow EPDC (local partner) will start the distribution of food parcels in Aleppo and GOPA will distribute RTEs and food baskets in Lattakia.
- AAH: All Assessments and data collection completed from Aleppo. The market is functional with no shortage of commodities but increased prices. The organization will target Jibrin village with RTEs distribution as there is a plan from the government and the operation room to move IDPs from the schools to this village in the next week.
- PUI: There is a plan to distribute MPCA. The assessment is ongoing and coordination with the subnational team is done. The intervention might cash for work to remove debris of EQ-impacted areas.
- MOFA: Circulated a note to humanitarian actors about the shortage of yeast and wheat flour.
- BWG: conducted a coordination meeting with partners this week and discussed the assessment of damaged bakeries and how should the response be kicked off.
- Homs/Hama: There is a need to support hosted families. SARC has all the information ready to share with concerned partners in Homs and there is a need to conduct the same approach in Hama of assessing hosted families. The next phase of the assistance will be the distribution of food baskets for families who have access to cooking materials and facilities.
- AVSI: Ongoing distribution of the RTEs in Aleppo is happening.
- Aleppo: the plan is to move from the emergency response to organized assistance in coordination with the operations room and all actors are supporting reducing the number of collective shelters by assessing the building and sorting those that are safe to be used by families at the shelters.
- HEKS-EPER: is preparing for the rehabilitation of bakeries at the 4 impacted governorates in coordination with the BWG.
- Coastal: WFP is distributing RTEs and fresh meals in Astamo village in Lattakia for 3000 HHs as this village was highly impacted by the EQ.

Hot meals distribution to displaced people who lost their homes at the Hasan Bin Ali Mosque, Al-Muyassar Neighborhood of Aleppo ©WFP/Hussam Al Saleh



RESPONSE

In Northwest Syria

In north-west Syria, the situation remains dire, particularly for the 4.1 million people who rely on humanitarian assistance to subsist. According to a rapid needs assessment conducted by REACH, involving 604 communities in north-west Syria, shelter needs were identified as the top priority among displaced populations. Many homes have collapsed in the aftermath of the earthquakes. As of 14 February, more than 8,900 buildings have been completely or partially destroyed in north-west Syria, rendering at least 11,000 people homeless. REACH reported that other priorities cited by communities were multi-purpose cash and winterization needs.

Results from REACH assessment confirms that overall market resilience. Even in assessed communities that reported being directly impacted by either damage or service disruption, markets are generally not fully closed and increased item unavailability was not commonly reported.

As per CCCM second update during the period from 6 February to 13 February 2023 after the devastating earthquake, more than 57,000 displacements took place in north-west Syria, with departures principally occurring from Jandairis, and other notable departures from Salqin, as well as Harim. The main locations where displaced people arrived to included Dana, Salqin and Maaret Tamsrin sub-districts

Reports of close to 70 reception centers have been opened in both Aleppo and Idleb - In addition, these centers need to be covered by multiple assistance.

FSL is coordinating with partners to ensure coverage of food need of newly established reception centres and displaced population.

FSL partners are proving first line response to food needs of people affected by earthquake with one-off Ready To Eat rations, cooked meals (primarily in shelter and camps), and emergency MPC grant. FSL partners are recommended to follow [FSS standard Response Package](#). Partners are recommended to input their planned response into the Emergency Response tracker for operational coordination.

A skype group among partners for operational coordination has been set up.

FSL is coordinating with CWG on the distribution of CVA assistance (MPC, cash/voucher for food, etc.) based [Guidelines for MPC in NWS](#). GOAL is expanding its bakery support programme to cover; Harim, Salqin, Jandairis as part of the emergency response.

FSL is coordinating with partners to ensure coverage of food need of newly established reception centres and displaced population.

WFP has resumed its regular general food assistance resumed for in-kind and cash, reaching an estimated 480,000 people to date.

Around 87,145 affected people received 17,429 RTEs through WFP partners in Idleb, Harim, Dana, Benesh, Jandairis, Kafr Takharim, Maaret Tamsrin, Saraqeb, Taftanaz, Jisr-Ash-Shugur, Armanaz, Kafr Takharim, Azaz, and Jarablus. • In North-west Syria, WFP's regular general food assistance resumed for in-kind and cash, reaching an estimated 480,000 people to date.

Through its [emergency response tracker](#), FSL partners reported from the start of the response that 37 partners reached in total cumulative 315,510 beneficiaries with one-off distribution of ready to eat rations of dry food (sufficient for a family of five for one week). Over the last week, 254,711 people have been reached through RTEs distribution (top three SDs: 84,142 in Jandairis, 15,192 in Salqin, 57,574 in Dana).

13 partners reached 93,437 beneficiaries with one-off emergency MPC grants of 150 USD (designed to cover 1-month basic needs) (top three SDs: 22,105 in Jandairis, 13,180 in Atareb, 15,500 in Salqin).

Additionally, 13 partners distributed 94,035 cooked meals (top three SDs: 39,509 in Jandairis, 11,000 in Al-Bab and 8,907 in Azaz), 90% of the cooked meals are reported as one-off distribution.

16 partners reached over 475,000 people with bread support (free bread or subsidized bread distribution), half of them with one-off distribution.

COORDINATION

In HCT hub

- Recommendations to coordinate with the subnational sector coordinator in the area of response and to share the location after confirming with FAS partners to avoid any duplication in the assistance.
- There is an ongoing discussion with CWG to check if there would specific recommendations for EQ response In terms of CVA activities.
- Today on the 16th of Feb, the FAS Emergency coordination meeting took place, the next meeting will take place on Sunday 19th Feb 23, at 11 AM Syria time.
- AWG meeting to discuss the potential interventions will take place soon, invitation will be shared with relevant partners.
- Lattakia subnational sector meeting with partners working in coastal areas to coordinate the response over there.

ASSESSMENTS

In HCT hub

- [The assessment Tracker](#): The findings show 19 assessments reported in Jebel Saman, 6 in Hama and 4 in Lattakia. Out of which 20 assessments were completed, 7 ongoing and 2 planned assessments.
- Partners are encouraged to share any reports and findings related to the EQ assessments no matter the status of the report in order for the sector team to include the information at the Sitreps.
- Oxfam: the team is working on finalizing the RNA report including multi-sectors: Food Security, WASH and Protection in Aleppo.
- WFP and FAO: are assessing the feasibility of interventions in livelihoods projects and this is in coordination ERL sector. FAO also is in close coordination with MAAR to assess the damage in the irrigation canals impacted by the EQ.
- ISC: Conducted a rapid needs assessment in Hama, in addition to a rapid multi-sectoral assessment in Lattakia, and an inter-sector mission report in Al Raml Al Janubi neighborhood in Lattakia city, the information is available now at the HCT hub EQ assessment tracker.

In Northwest Syria

- Partners are conducting rapid needs assessment to inform their response
- Assessment tracker is available [EQ 2023 Assessment Tracking Sheet - Google Sheets](#)
- REACH Rapid Needs Assessment on earthquake in NWS expected to be finalized next week
- IMMAP is implementing a full assessment for the bread and bakery facilities to Identify the conditions of those facilities and the volume of damage for those facilities.
- Joint Market assessment targeting vendors by REACH Mercy Corps Goal Shafak Ataa with data collection next week
- ICCG recommended to assemble all partner assessments in one integrated and comprehensive assessment which could be used among all partners, and it should be inter sectoral
- To support the humanitarian response in Türkiye and Syria, IMPACT has deployed data gathering and analysis capacities to provide aid actors with timely information.
- To support ongoing decision-making around cash feasibility for the earthquake response, REACH produced a new market analysis map. Preliminary results from the REACH RNA (with data collected from over 370 communities so far) suggest that for now, markets in these areas are resilient.

CHALLENGES

- In HCT: partners have reported challenges in accessing information in terms of people affected movement, and challenges in terms of identifying displaced people from shelters.
- In HCT: partners reported the need for additional funding as they reported available capacity to scale up the response.
- In HCT: lack and shortage of holistic assessments, and to mobilize resources to analyze the assessments conducted by partners for the time being.
- Among the operational challenges that cash and other programming are likely to face in these early weeks is the temporary disruptions in PTT branch services in NWS. OCHA and the Cash Working Group are engaging with PTT to get more information as to when branch operations will be restored and solutions to other bottlenecks.
- In NWS some partners reported concern for shortages of some food items, especially canned food in the market, in areas like Sarmada and Dana, and decreased availability of wheat flour
- Partners have responded utilizing available resources inside Syria, emergency programming and at times reprogramming interventions, with need to replenish stocks.
- Results from REACH assessment confirms that overall market resilience. Even in assessed communities that reported being directly impacted by either damage or service disruption, markets are generally not fully closed and increased item unavailability was not commonly reported.

For more information

Mohie Alwahsh
WoS Food Security Sector Coordinator
mohie.alwahsh@wfp.org



WHOLE OF SYRIA (WoS)
FOOD SECURITY
SECTOR

Website

<https://fscluster.org/syria>