

Rapid Income Expansion Self-Support Decision Tree

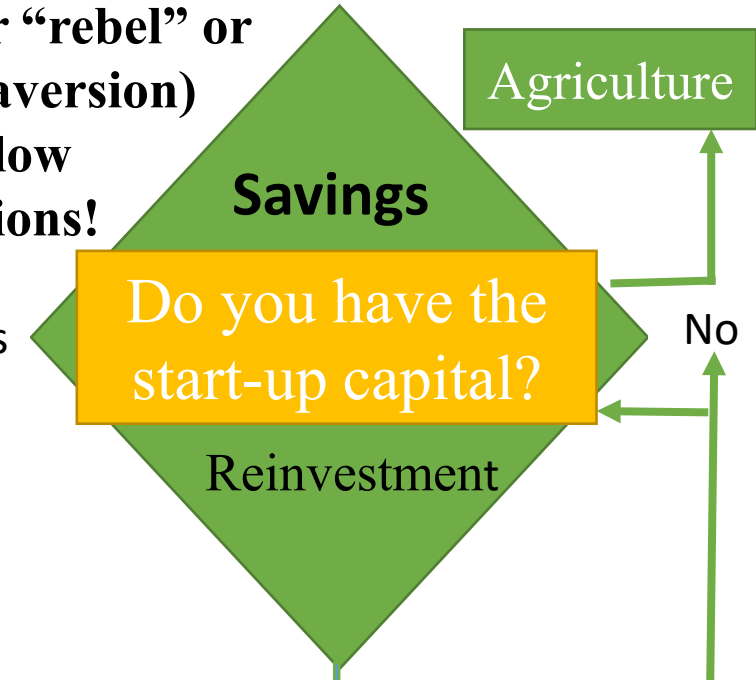
Choose highest income per hr. opportunity

Options for getting skills

- Potential apprenticeship
- Get counsel
- Study business

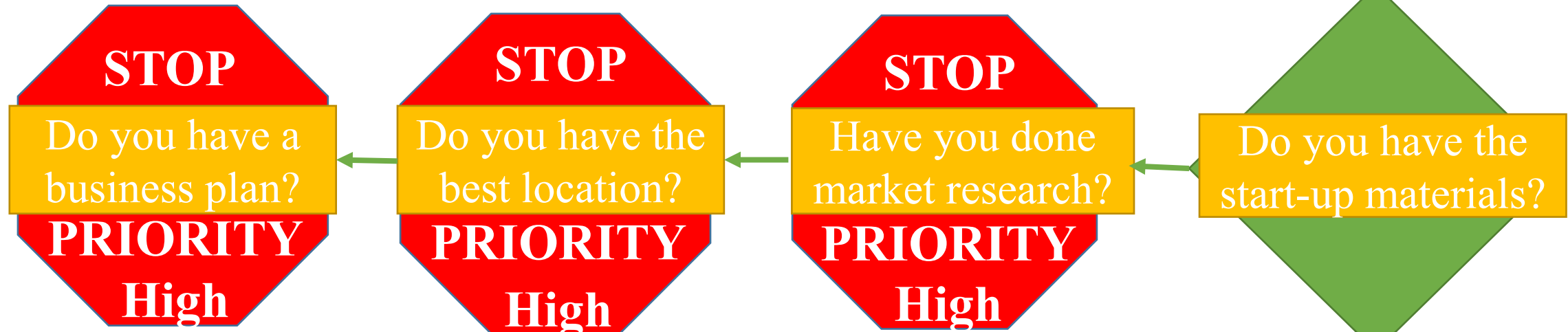


We will together “rebel” or fight (strong aversion) against low expectations!

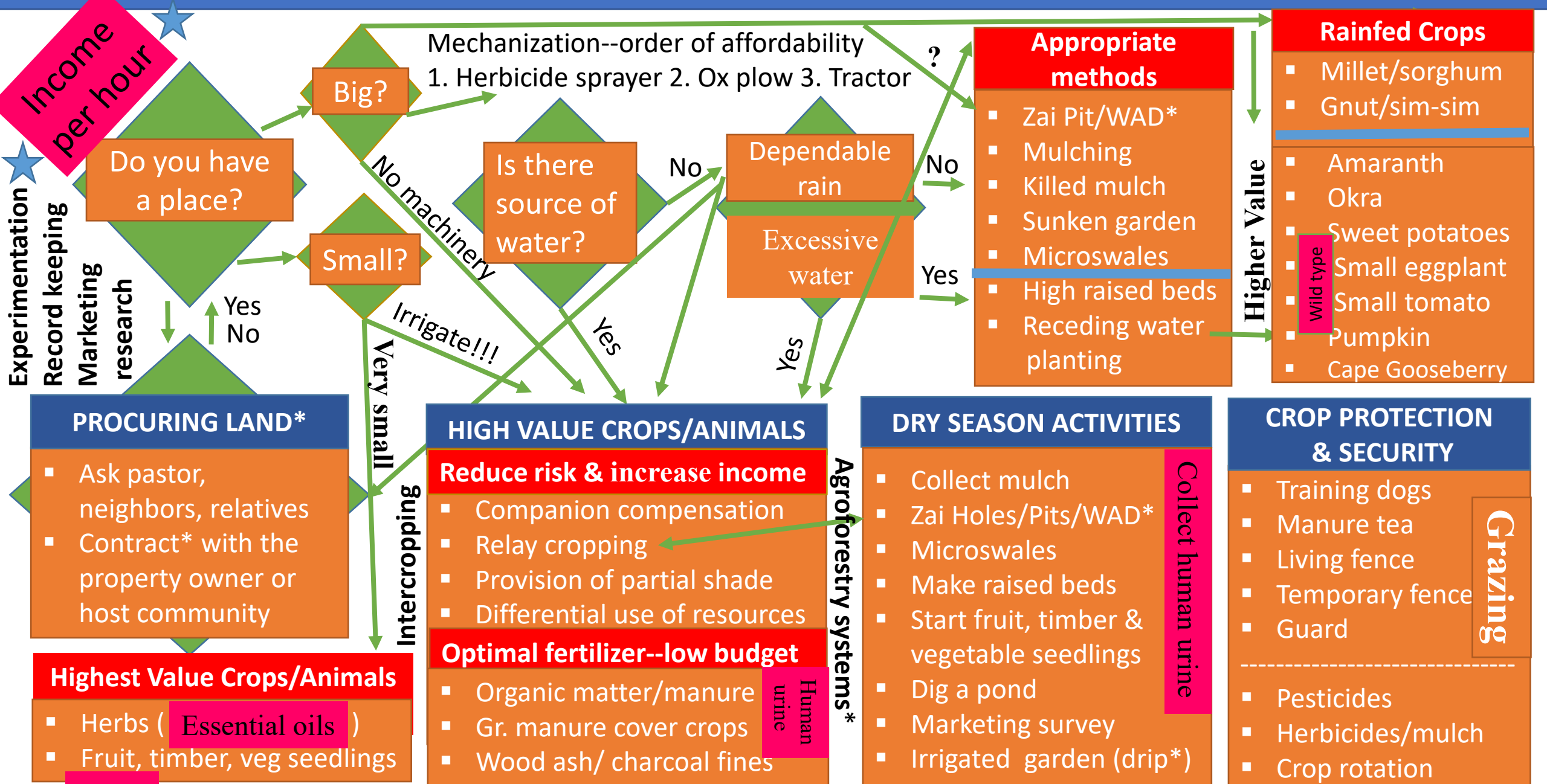


Priorities for business success

Lean Start-up*



AGRICULTURE: CONSIDERING INTENSIFYING &/OR EXTENSIFYING



*Make your own bamboo or water bottle drip irrigation system



ACROSS Zai Pits/Holes
Kapeota East, South Sudan
Preparation of holes/pits

ACROSS Zai Pits/Holes

Kapeota East, South Sudan

A month $\frac{1}{2}$ no rain



ACROSS Zai Pits/Holes
Kapoeta East, South Sudan
A month ½ little rain



"THINKING OUTSIDE THE BOX" STRATEGIES

LEAN START-UP METHODOLOGY

- Entrepreneurs
- Start-ups
- Uncertainty
(product/market/model)
- Assumptions
- Hypotheses
- Validated learning
- Experiments
- Minimum viable product
- Customer development
- Pivots

LAND PROCUREMENT & CONTRACT OPTIONS

- Contract grow
- Subcontract
- Share option
- Lease/rent
- Crop share
- Assisted provision

Work exchanges for
procuring land

- "Digging"
- Tree/veg. seedlings
- Tree/veg. seedlings
& planting
- Guarding
- Irrigating
- Transport
- Mentoring

AGRI-BUSINESS INCUBATOR VALUE-ADDED OPPORTUNITIES

- Drying
- Freezing
- Paste/sauce
- Tincture/lotion
- Essential oil
- Prepared salad
- Shampoo/soaps
- Canning
- Soup mixes
- Juicing
- Freeze dry
- Roasted seeds
- Somoza/pizza
- Syrup/jelly/jam
- Filled mandazi
- Grinding-powdering
- Fruit/nut logs/bars
- Marinating
- Deep frying
- Heat Pasteurizing
- Cold/hot smoking
- Seedling production
- Seed production
- Coated seeds/nuts

Host IDP/Refugee Communities Maximizing Local Resources

Resource Development Cards

- Community agreements
- Contractual Agreements
- Cropping techniques
- Local fertilizer application
- Orchard establishment
- Vegetable cropping
- Timber plantations
- Vocational skills training
- Traditional education
- Character development
- Apprenticeships
- Charity/volunteerism
- Extension/change agents

Natural Resources

Land

- Swampy
- Poorly drained
- Well drained

Water

- Nile or river
- Seasonal stream
- Drainage channel

Justice Resources

- Advocacy
- Accountability
- Good policies
- Equal opportunity

Human Resources

- Youth
- Women
- Men

Security Enhancement Card (Time & \$ allocation:

- WASH Training
- Advocacy Training
- VSLA establishment
- Cooperative establishment
- Dog training
- Emergency drills
- Agriculture training
- Business training
- Crop protection training
- Fence establishment

Risk Card (Random draw)

- Drought
- Flood
- Malaria
- IC Violence
- Raiding
- Theft
- Alcoholism
- Early childhood marriage
- Wife abandonment
- Laziness
- Poor diet
- Domestic violence

Infrastructure cards (Time & \$ allocation)

- Bore hole
- School
- Clinic/hospital
- Church
- Road

Time to allocate:
Hours X # of people

Rainy season Dry season

\$ to allocate:

Community Family

GAMIFICATION