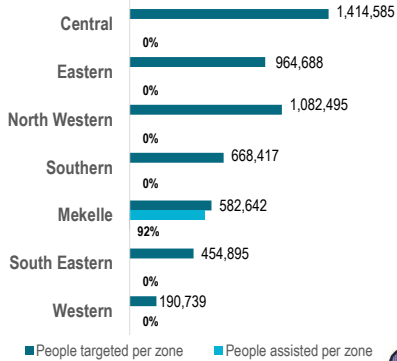


0.5 MILLION PEOPLE ASSISTED SINCE LATE DECEMBER 2022

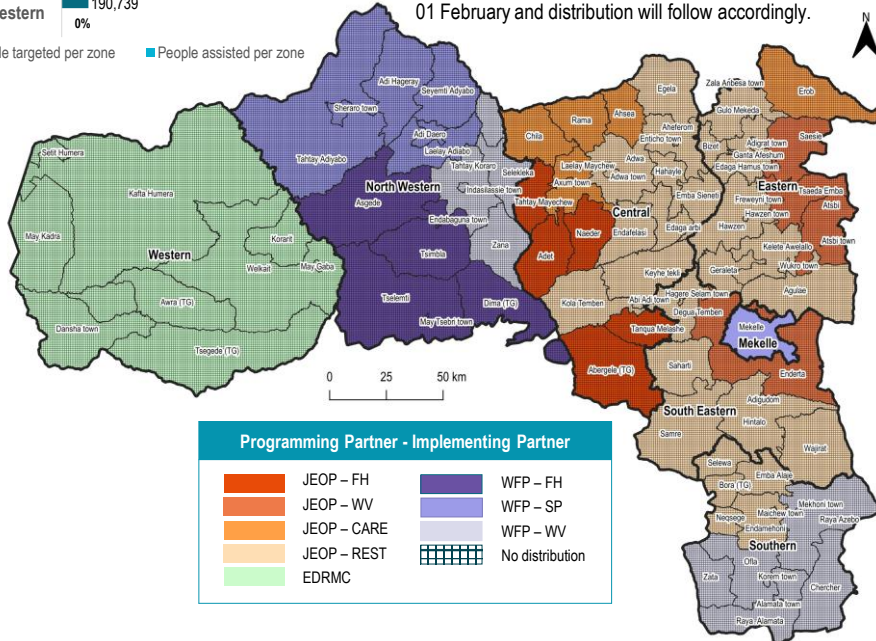
5.4 million people targeted for Round 3



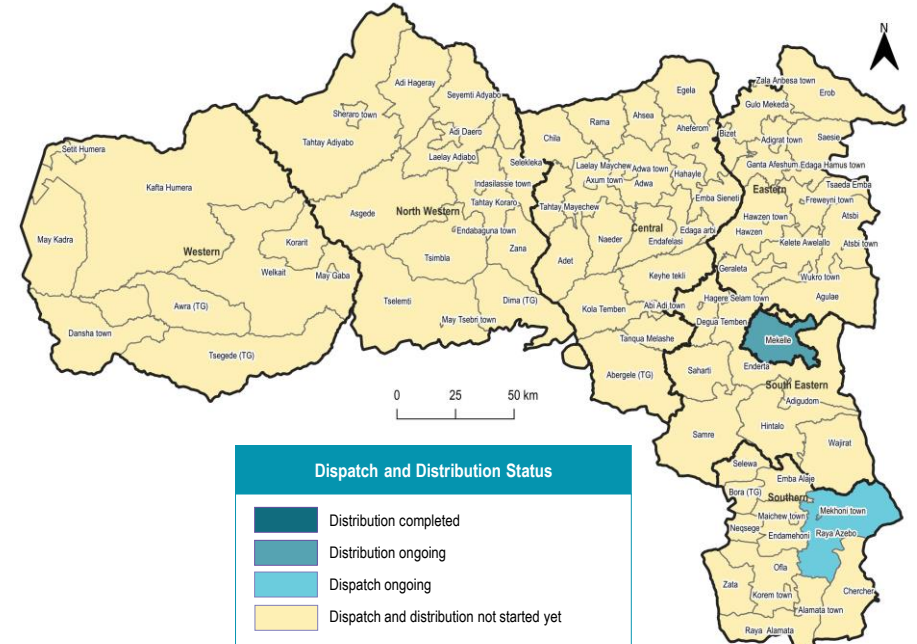
The Round 3 of 2022 was launched on 30 December, 2022, with distribution starting in Mekelle while partners are working to complete Round 2 distribution in other locations.

WFP and its partners assisted 535,498 people (25% of its planned caseload of 2.1 million people) with 9,079 MT of food in Mekelle as of 25 January. The assisted caseload included around 7,000 vulnerable people residing in collective care centers for people with special needs - for instance, unaccompanied and separated children, elders, people with disabilities, vulnerable women and girls as well as gender-based violence survivors

JEOP partners started dispatching food to various woredas on 01 February and distribution will follow accordingly.



FOOD DISPATCH AND DISTRIBUTION AS OF 25 JANUARY 2023



Between 19-25 January, a total of 171,987 people were assisted with 2,824 MT of food in Tigray – 2,930 people under Round 3 and 169,057 people assisted under Round 2.

Together with the local authorities and communities, partners are working on re-targeting to include people who are newly displaced or experiencing secondary displacement in the caseload and identifying other most vulnerable people in need based on available vulnerability information (for instance, demographic and socio-economic data). This exercise has been very challenging due to fluid population movements, high number of displaced people, limited or non-existing local government structure, presence of multiple armed actors in some areas, and lack of documentation among affected populations, causing delays in food distribution in some locations.

All food partners have to continue relying on humanitarian flights to bring cash into the region while banking services, gradually resuming in the main towns, is yet fully functional. Significant amount of cash is required for partners to cover day-to-day operation costs and previous credits, ensuring that assistance continues without interruption.

Disclaimer: This dashboard captures information available at the time of production based on partners' reports. The boundaries and names shown, and the designations used on the map do not imply official endorsement or acceptance by the United Nations.

Data source: Food partners' 5W data
Production date: 01 February 2023
Contact: Tigray_foodcluster@fscluster.org
Website: fscluster.org/tigray

EDRMC: Ethiopian Disaster Risk Management Commission
JEOP: Joint Emergency Operation
WFP: World Food Programme
FH: Food for the Hungry

REST: Relief Society of Tigray
SP: Samaritan's Purse
WV: World Vision