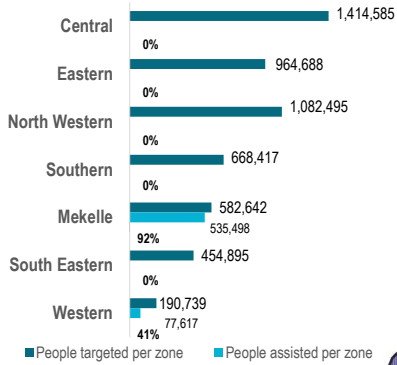


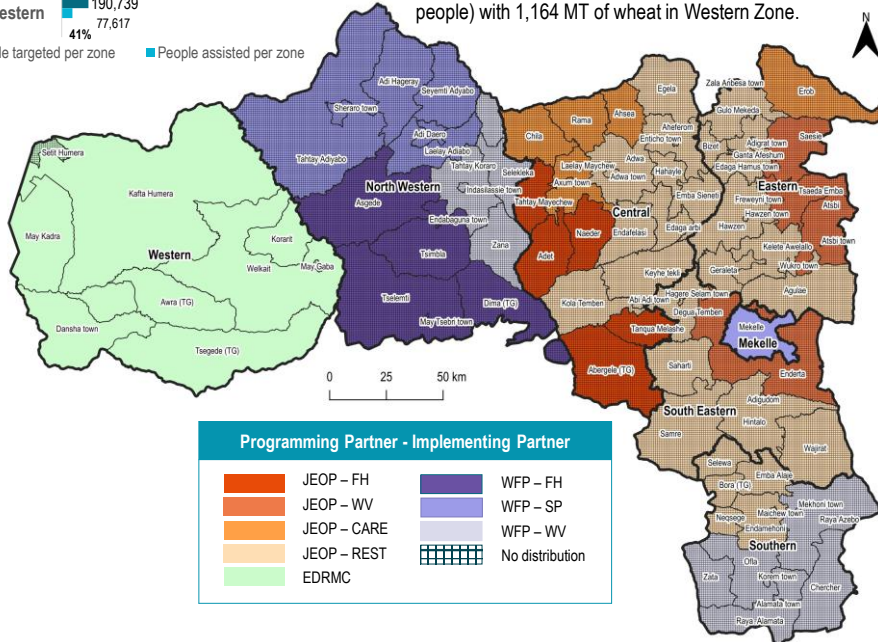
## 0.6 MILLION PEOPLE ASSISTED SINCE LATE DECEMBER 2022

5.4 million people targeted for Round 3

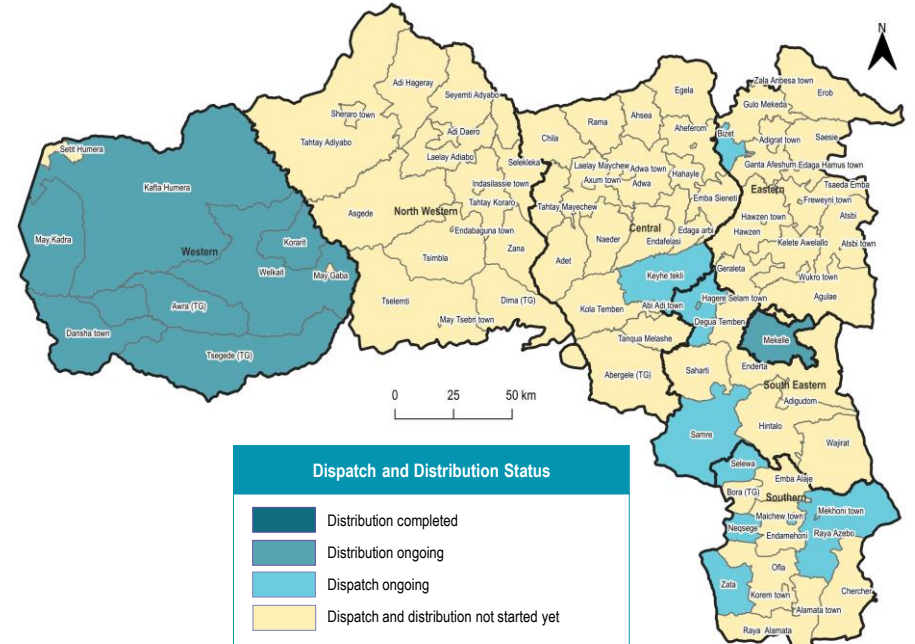


The Round 3 of 2022 was launched on 30 December, 2022, while partners are working to complete Round 2 distribution in other locations. Partners have assisted 613,115 people (11% of the total planned caseload of 5.4 million people for the region, including Western Zone) with 10,243 MT of food as of 01 February.

WFP and its partners assisted 535,498 people (25% of its planned caseload of 2.1 million people) with 9,079 MT of food in Mekelle. The assisted caseload included around 7,000 vulnerable people residing in collective care centers for people with special needs; and it was reported that EDRMC assisted 77,617 people (41% of its planned caseload of 0.2 million people) with 1,164 MT of wheat in Western Zone.



## FOOD DISPATCH AND DISTRIBUTION AS OF 01 FEBRUARY 2023



JEOP partners dispatched more than 2,100 MT of food to Bizet (Eastern), Maichew town, Neqsege and Selewa (Southern), Degua Tembien, Hagere Selam town and Samre (South Eastern) as of 01 February. Distribution is ongoing while partners are working to verify and communicate the latest distribution status from the field.

Timely verification and inclusion of vulnerable caseloads in food assistance has been one of the main challenges, particularly for urban displacement. Together with the local authorities and communities, partners are working on re-targeting to include people who are newly displaced or experiencing secondary displacement in the caseload and identifying other most vulnerable people in need based on available vulnerability information (for instance, demographic and socio-economic data). This exercise has been very challenging due to fluid population movements, high number of displaced people, limited or non-existing local government structure, presence of multiple armed actors in some areas, and lack of documentation among affected populations, causing delays in food distribution in some locations.

All food partners continue relying on humanitarian flights to bring cash into the region while banking services, gradually resuming in the main towns, is yet fully functional.

**Disclaimer:** This dashboard captures information available at the time of production based on partners' reports. The boundaries and names shown, and the designations used on the map do not imply official endorsement or acceptance by the United Nations.

**Data source:** Food partners' 5W data  
**Production date:** 08 February 2023  
**Contact:** [Tigray\\_foodcluster@fscluster.org](mailto:Tigray_foodcluster@fscluster.org)  
**Website:** [fscluster.org/tigray](http://fscluster.org/tigray)