

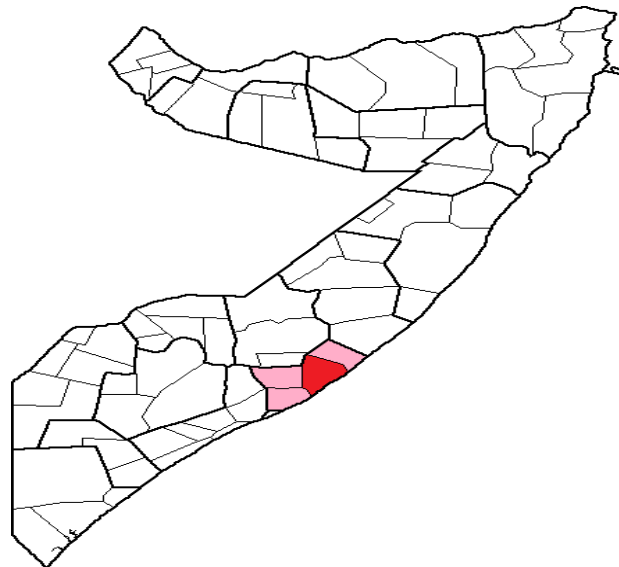
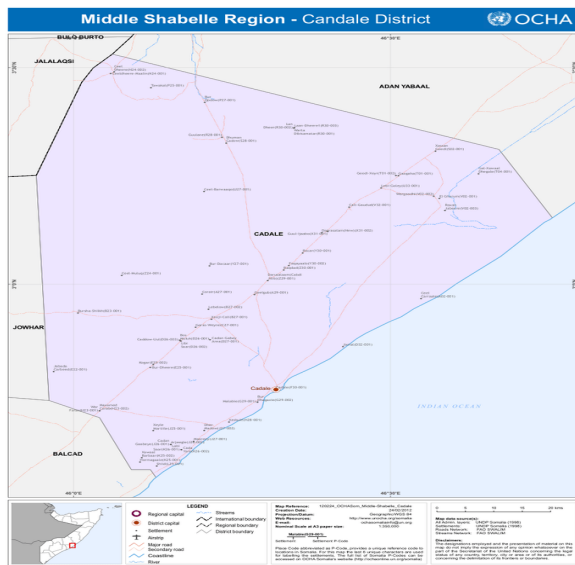
Rapid Assessment on Inter-Clan Clashes In Adale District

Rapid Assessment on Inter-Clan Clashes In Adale District Conducted on 6/8/2023

Geographical Location;

Adale District is located in the southeastern part of Middle Shabelle Region of Somalia, it's headquarter is the coastal town of Adale.

The population of Adale district is estimated at 46,720. Majority of this population are agro-pastoralists who depend on livestock and few practice subsistence farming. The district is mainly inhabited by Abgal sub-clan of Hawiye clan.



Introduction;

Between 17 to 21st of July, 2023 a violent inter-klan clashes erupted in parts of the district, this resulted in the displacement of about 2,814 households, led to the death of 25 people and 13 wounded. Additionally 367 houses were burnt, 30 houses demolished/damaged, 42 shops looted, 2 cars burnt and 1 car and an estimated number of livestock taken away in Biyo Madobe, Gefo, Horcad, Bulla Cagey and Boos Muluq villages.

The fighting involved Mohamed Muse and Abdalla Aroone families of Abgal sub clan who are neighbors. Conflicts between these 2 communities have been existing for decades. Women, children, elderly, and people of disabilities are among those displaced by this conflict.

Rapid Assessment on Inter-Clan Clashes In Adale District

Mediation talks led by the former president of Somalia his Excellency Shariff Sheikh Ahmed, The Ugas, The imam, the Sultan and other leaders of Abgal sub-clan are ongoing and so far ceasefire has been agreed by both parties involved in fight.

Methodologies Applied in the Assessment;

Rapid Assessment form was used as the assessment tool. Key informant interviews (KII), focus groups discussion (FGD) and observation methods were conducted by means of both qualitative and quantitative to acquire firsthand information on the ground.

The team managed to visit 4 villages which are among the most affected villages and a total of 12 focus group discussions each comprising a total of 12 persons composed of women, men, youth, elderly and persons with disabilities on the hand 24 key informants were interviewed during the assessment.

Cluster	Key Findings	Immediate/Priority Needs
Food Security and Livelihoods	<p>Drastic reduction in household food consumption with households relying on donations from relatives and well wishers in other villages and towns. There are limited food items in Raage Ceele market and being sold at high prices that the community could not afford to buy.</p> <p>Livestock especially goats and sheep are emaciated and cannot fetch good prices when sold in the market.</p> <p>Livestock especially goats and sheep are emaciated and cannot fetch good prices when sold in the market.</p> <p>Majority of the target population are mainly pastoralists while few are agro-pastoralists. As reported by FSNAU, UNOCHA and the Somalia Federal Government the serial drought in Somalia has greatly affected the said population making them among the most vulnerable in Somalia, they lost more than 80% of their livestock's to the drought, the few who are agro-pastoralist were equally not spared since they did not hard any yield from their rain feed farms. The few remaining livestock are affected by diseases, there are no veterinary medicines available and no qualified veterinary personnel/Community Animal Health Workers (CAHWS) in all the locations assessed.</p>	<p>Urgent provision of food aid to the affected people.</p> <p>Re-stocking of livestock to these people is also a priority need.</p>

Rapid Assessment on Inter-Clan Clashes In Adale District

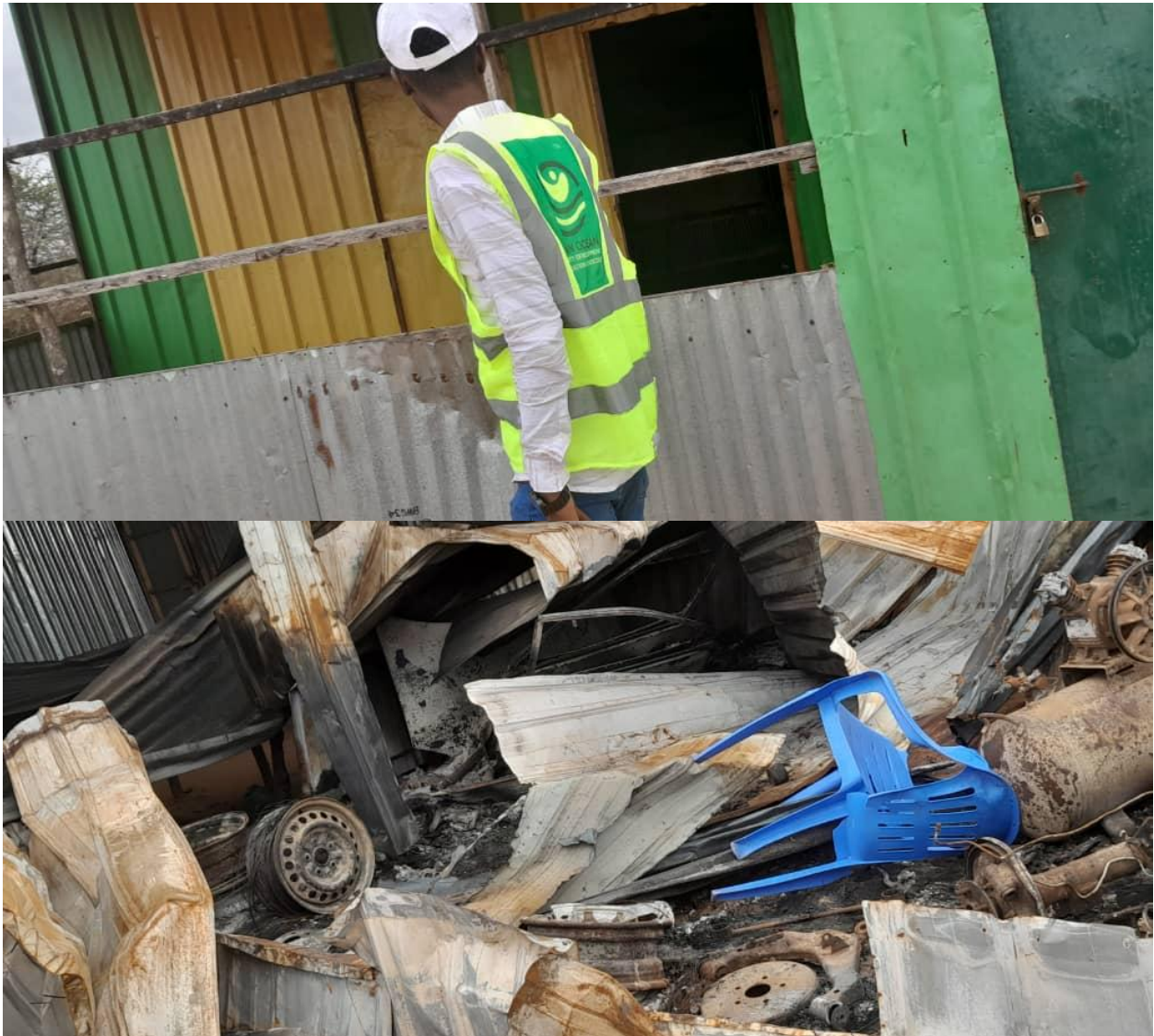
NFI/Shelter	<p>NFI/SHELTER;</p> <p>367 houses have been burnt including none food items (NFI) and 30 houses demolished.</p> <p>Household members have moved to nearby bushes hiding and seeking refuge under trees in fear of been attacked by their rival clan.</p>	<p>Distribution of NFIs (Plastic sheets, Mosquito nets, mother kits, blankets, soap and sleeping mats is urgently Needed.</p>
WASH	<p>The hygiene and sanitation condition among the IDPs is extremely poor.</p> <p>Open air defecation is mainly practiced, deposits of feces were very common along the paths and around the tress they lived under since there are no latrines.</p> <p>Households were observed to be drinking water from unprotected water wells.</p> <p>Inadequate water containers were reported, and some dirty ones wereobserved.</p>	<p>There is urgent need for the distribution of hygiene kits to the affected households.</p> <p>Launching of hygiene promotion awarenly raising programs.</p> <p>Distribution of aqua tabs is a priority.</p>

Rapid Assessment on Inter-Clan Clashes In Adale District

ANNEX 1 PHOTOS AFFECTED AREAS



Rapid Assessment on Inter-Clan Clashes In Adale District



Rapid Assessment on Inter-Clan Clashes In Adale District



Rapid Assessment on Inter-Clan Clashes In Adale District



Rapid Assessment on Inter-Clan Clashes In Adale District



Rapid Assessment on Inter-Clan Clashes In Adale District

ANNEX 2 LIST AFFECTED AREAS

NO	Village Name	District	Coordinates	
			Latitude	Longitude
1.	Geyfo	Adale	2.6619885	46.0123816
2.	Biyamadoobe	Adale	2.8396112	45.9854564
3.	Horcad	Adale	2.6619883	46.0123814
4.	Bulla Cagey	Adale		
5.	Boos Muluq	Adale	2.7377424	46.0638488