

## RESEARCH, ASSESSMENT & MONITORING (RAM) - PERIODICAL

### Latest Publications

#### Country-Specific Reports

##### *Satellite Imagery Analysis*

- \* [CAR](#)
- \* [CHAD](#)

**CAR** - Résultats de l'Évaluation Nationale de la Sécurité Alimentaire (ENSA): Handicap et Sécurité Alimentaire, August 2021 ([French](#) and [English](#))

**Chad** - Rapport trimestriel de suivi économique: Trimestre 2, [July 2021](#)

**Liberia** - Market Monitor - Quarter 2, [June 2021](#)

**Nigeria** - Urban Focus: COVID-19 Economic Impacts on Essential Needs for Urban and Slum Households in Nigeria, [April 2021](#)

**Sierra Leone** - State of Food Security: Comprehensive Food Security and Vulnerability Analysis, [May 2021](#)

Repository de [Bulletins](#) et *Études marchés*

#### Regional/Global Reports

**West Africa - Seasonal Monitor**, [August 2021](#)

**Afrique de l'Ouest et du Sahel** - Prévisions saisonnières des caractéristiques Agro-hydro-climatiques pour les zones sahélienne et soudanienne, [Juin 2021](#)

**Global Monthly Market Monitor**, [August 2021](#)

Access full library of reports here

[dataviz.vam.wfp.org](https://dataviz.vam.wfp.org)

## Assessments Progress

### ONGOING

- Benin:** CFSVA - mobile VAM - Monthly Price Monitoring - Decentralised Evaluation Final joint evaluation of PNASI
- Burkina Faso:** ENISAN - FSMS (Food Security Monitoring Systems) - Monthly Price Monitoring
- Cameroon:** ENSAN - mobile VAM - Northwest/Southwest and Far North Targeting - Quarterly PDM (Post Distribution Monitoring) - Fill the Nutrient Gap - Evaluation programme PVVIH
- CAR:** EFSA Suivi de la sécurité alimentaire dans les zones IPC4 - Targeting
- Chad:** ENSA - Enquête de Vulnérabilité des IDPs - SENS Enquête nutritionnelle adaptée en milieu réfugié
- Côte d'Ivoire:** DISSA - Final Evaluation of USDA McGovern-Dole-funded
- Gambia:** CFSVA - Informal Cross-border trade monitoring
- Ghana:** CFSVA - FSMS - Monthly Price Monitoring - Baseline Adolescent Girls Nutrition Intervention (AGNI) - ENVAC Final Evaluation (Enhanced Nutrition and Value Chain)
- Guinea:** mobile VAM - PDM Distribution Générale du Cash aux Bénéficiaire du Projet RESIGUI - Thematic evaluation Capacity strengthening activities
- Guinea-Bissau:** FSNMS - Monthly Price Monitoring
- Mali:** ENSAN - Monthly Price Monitoring - Resilience Priority Impact Evaluation in the Sahel
- Mauritania:** FSMS - mobile VAM - PDM Sites Resilience - PDM Soudure Guidimakha
- Niger:** Evaluation de la sécurité alimentaire et nutritionnelle à travers les sites sentinelles face to face & mVAM - Resilience Priority Impact Evaluation in the Sahel
- Nigeria:** ENA - mobile VAM Monthly Household and Traders remote Food Security and Markets Monitoring - Formative Evaluation of Livelihoods Activities in Northeast Nigeria 2018 to 2020
- Senegal:** Remote PDM GFD - R4 Baseline
- Sierra Leone:** FSMS
- RBD Nutrition:** Etude systémique des systèmes alimentaires pour une alimentation saine - Analyses de couverture des programmes
- ICSP Evaluation: Mid-Term Review** (Benin, Cameroon, CAR, Côte d'Ivoire, Gambia, Guinea-Bissau, Liberia, Mali, Mauritania, Nigeria, Sao Tome and Principe, Sierra Leone)

### UPCOMING

COs	RBD
<p><b>Benin:</b> PDMs = Cantines scolaires, Assistance alimentaire et nutritionnelle (projet ReCoBA), Stunting prevention (SO1)</p> <p><b>Burkina Faso:</b> Evaluation des systèmes alimentaires en contexte d'insécurité - Nutritionnal Causal Analysis - Etude de cartographie des marchés - ICSP evaluation Mid-Term Review</p> <p><b>Cameroon:</b> CFSVA 2022 - MFI Enquête marché - Research Lewie Study - Research Cash Impact Study</p> <p><b>CAR:</b> ENSA - MFI Enquête marché - PDM</p> <p><b>Chad:</b> ICSP evaluation Mid-Term Review - Evaluation Recovery and resilience building activities</p> <p><b>Côte d'Ivoire:</b> Etude d'impact de Marché McGovern Dole - PDM Evaluation de la sécurité alimentaire-GFD vivres/cash - Baseline des activités des groupements agricoles KOICA</p>	<p><b>Nutrition:</b> Impact CBT/NUT</p> <p><b>EPR, Resilience, RAM:</b> Operationalisation of the humanitarian, development and peace nexus: country Case Studies.</p> <p><b>CBT, RAM:</b> Impact Assessment Economic impacts of CBT programme on beneficiaries expenditure pattern, food sector, impact on sectoral economic, population behaviours and on markets.</p> <p><b>Social Protection, RAM:</b> Review of targeting approaches applied in social protection programme in the countries of the Economic Community of West African States (ECOWAS)</p> <p><b>Social Protection, RAM:</b> Research Review of countries social protection responses to the COVID 19 pandemic in West and Central Africa? Lessons learnt and improvement.</p>

## Assessments Progress

### ➔ UPCOMING

COs	RBD
<p><b>Gambia:</b> <i>mobile VAM</i></p> <p><b>Ghana:</b> <i>PDM for Crises affected urban vulnerable groups (SO5) - ICSP Evaluation Mid-Term Review</i></p> <p><b>Guinea:</b> <i>MFI Enquête marché - Evaluation thématique des activités de renforcement de capacité du ICSP- Enquête de Suivi d'impact des Activités FFA/SAMS - Evaluation Finale du Projet RESIGUI - Evaluation des pertes poste récolte du riz</i></p> <p><b>Liberia:</b> <i>Evaluation of School Feeding activities</i></p> <p><b>Mauritania:</b> <i>PDM Camp Réfugié Mberra</i></p> <p><b>Niger:</b> <i>CSP Evaluation</i></p> <p><b>Senegal:</b> <i>EFSA - ICSP evaluation Mid-Term Review - Qualitative Research Activity - Baseline School Feeding Programme Présidentiel - PDMs Outcome = GFD, School Feeding Financement PME, FFA, R4</i></p> <p><b>Sierra Leone:</b> <i>MFI Enquête marché</i></p>	<p><b>Resilience:</b> <i>Annual follow up survey BMZ Integrated Resilience Programme annual follow up survey (Burkina Faso, Mali, Mauritanie, Niger, Chad)</i></p> <p><b>Resilience:</b> <i>Outcome analysis outcome Analysis of BMZ resilience integrated resilience outcome at regional level</i></p> <p><b>Gender:</b> <i>Gender/Market analysis</i></p> <p><b>Gender:</b> <i>Analysis Effect of WFP support in girl's retention in school</i></p> <p><b>School Feeding:</b> <i>Impact of COVID-19 related school closures in the region, on education access, retention, outcomes, nutrition and health</i></p> <p><b>School Feeding:</b> <i>Impact of School Feeding on education access, retention, outcomes, nutrition and health</i></p>

### ACRONYMS

**CFSVA**— Comprehensive Food Security & Vulnerability Analysis

**DISSA**— Dispositif national de Suivi de la Situation Alimentaire en Côte d'Ivoire

**EFSA**—Emergency Food Security Assessment

**ENA**— Essential Needs Assessment

**ENISAN**—Enquête Nationale Intégrée de la Sécurité Alimentaire et Nutritionnelle

**ENSA/N**— Enquête Nationale de la Sécurité Alimentaire/ Nutritionnelle

**FFA**—Food For Assets

**FSNMS**— Food Security and Nutrition Monitoring Systems

**GFD**—General Food Distribution

**I/CSP**—Interim Country Strategic Plan

**IDP**—Internally Displaced People

**IPC**—Integrated Food Security Phase Classification

**JAM**— Joint Assessment Mission

**MFI**—Market Functionality Index

**mVAM**— mobile Vulnerability Analysis and Mapping

**PNASI**— Programme National d'Alimentation Scolaire Intégré

**PVVIH**— Personne Vivant avec le VIH

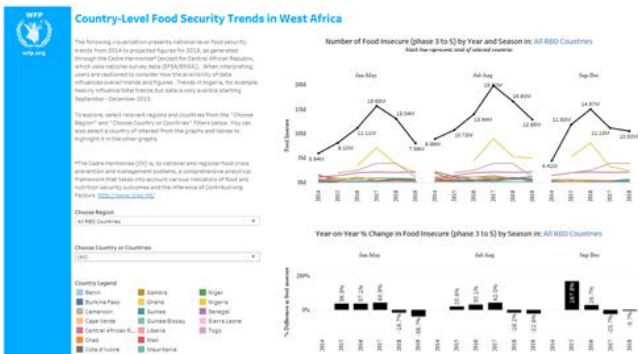
**SAMS**—Smallholder Agricultural Market Support

**SAN**— Enquête de la Sécurité Alimentaire et Nutritionnelle



# Data Visualization

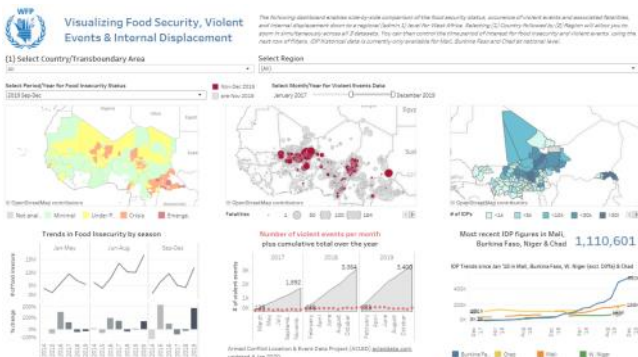
## West Africa Food Security Trends 2014—2021 (CH Countries + C.A.R.)



Combines Cadre Harmonisé countries and Central African Republic and explores food insecurity figures at *national level* over time.

[https://analytics.wfp.org/#/site/Public/views/WestAfricaFoodSecurityTrends\\_Adm0/RBDFoodSecurityTrends](https://analytics.wfp.org/#/site/Public/views/WestAfricaFoodSecurityTrends_Adm0/RBDFoodSecurityTrends)

## Violence, migration and food insecurity in West Africa, 2014—2021



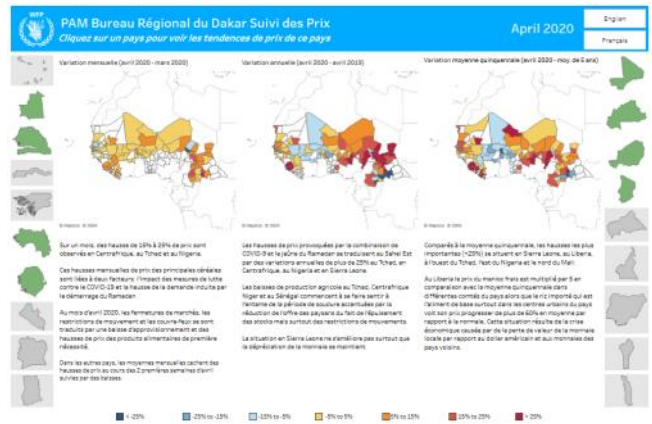
Explores the relationships between food insecurity (CH figures), conflict and migration (IDPs) in West Africa, including hotspot areas such as Liptako Gourma.

[https://analytics.wfp.org/#/site/Public/views/FoodInsec\\_Violence\\_IDPs/FoodIns\\_ViolentEvents\\_IDPs](https://analytics.wfp.org/#/site/Public/views/FoodInsec_Violence_IDPs/FoodIns_ViolentEvents_IDPs)

## The Security Dashboard: provides an overview of violent events in the region, with specific focus on Hotspot areas such as the Lake Chad Basin, Central African Republic, the North-West/South-West regions of Cameroon and the Sahel G5.

[https://analytics.wfp.org/t/Public/views/SecurityDash-Events\\_Fatalities/SecurityDashboard](https://analytics.wfp.org/t/Public/views/SecurityDash-Events_Fatalities/SecurityDashboard)

## RBD Price Monitoring



Provides a regional overview of the price variations for key staples and is available in English and French. From this page, country price monitors can be accessed by clicking on the green country icons. If the icon is grey, the country dashboard is not yet available, but will be in the future. On the country price monitor bulletins, price trends are available by commodity and market using drop down menus and hover functionality, and the Alert for Price Spikes (ALPS) system is integrated for certain products and markets.

<https://dataviz.vam.wfp.org/west-and-central-africa-regional-price-monitor-may-2020>





## Analytical Tools & Resources

### Seasonal Explorer

*Assesses performance of current and past rainfall seasons and the impact on vegetation at the subnational level for most countries.*

[http://dataviz.vam.wfp.org/seasonal\\_explorer/](http://dataviz.vam.wfp.org/seasonal_explorer/)

### Economic Explorer

*Explores latest economic indicators including food prices, currency exchange rates, inflation rates, etc.*

[http://dataviz.vam.wfp.org/economic\\_explorer/prices](http://dataviz.vam.wfp.org/economic_explorer/prices)

### Reports Explorer

*Provides access to all country assessment reports and other reports of interest.*

[https://dataviz.vam.wfp.org/Reports\\_Explorer](https://dataviz.vam.wfp.org/Reports_Explorer)

### e-learning section of the VAM Resource Center

<https://resources.vam.wfp.org/boost-your-vam-skills-with-e-learning>

### Essential Needs Analysis

<https://newgo.wfp.org/collection/essential-needs-analysis>

### Note d'orientation opérationnelle pour le processus de ciblage et d'enquête baseline - TCHAD

<https://docs.wfp.org/api/documents/WFP-0000131065/download/>

*For more information, please contact us at  
RAM UNIT, WFP Regional Bureau Dakar ([rbd.ram@wfp.org](mailto:rbd.ram@wfp.org))*