



FSL – 31 March 2021
Logistics Cluster

LOGISTICS CLUSTER BUDGET PROJECTIONS & IMPLICATIONS

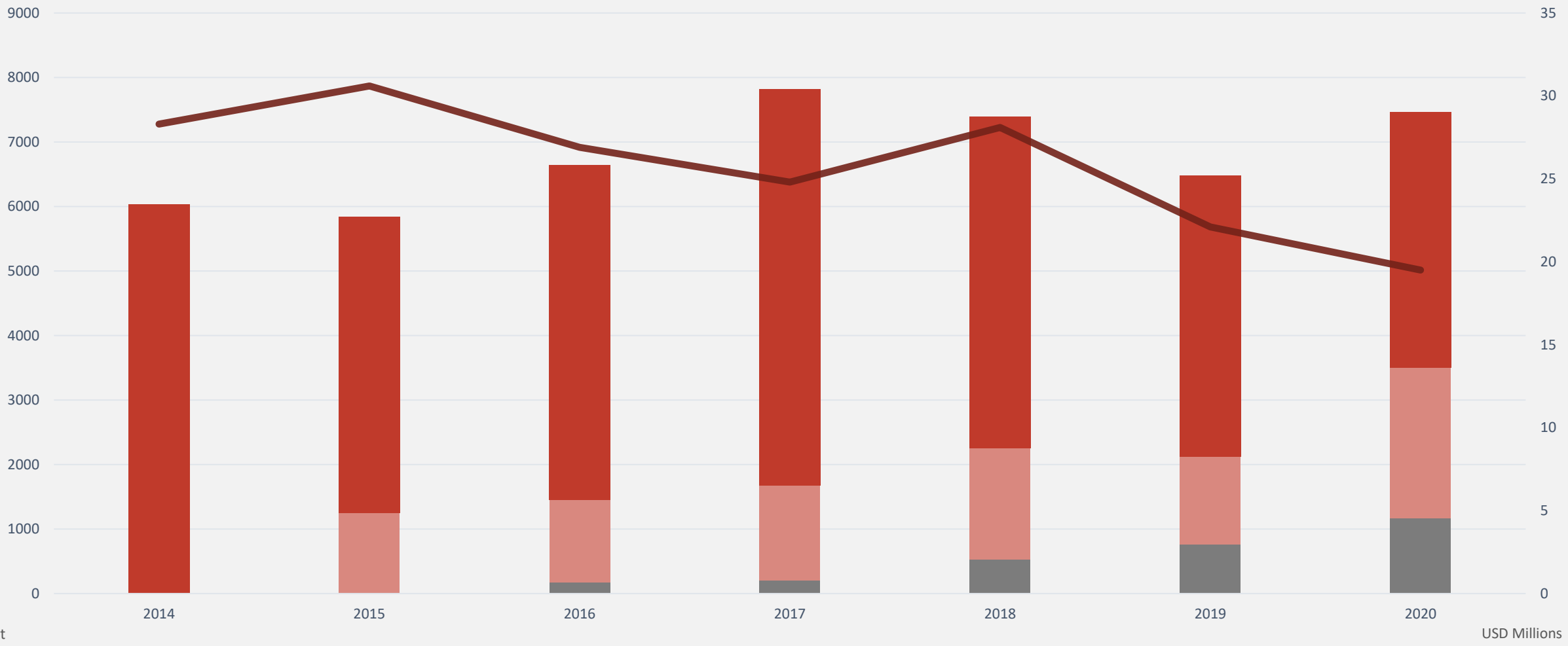


Based on main donors' budget and funding forecast, the Logistics Cluster is subject to a projected funding gap of 35% in 2021.

	Required Budget	35% projected shortfall
Air Operations		
Juba-based Fixed Wing	100% utilization: 1750 MT / 230 Round Trips	Reduced to 60% utilization: 1040 MT / 140 Round Trips
Helicopter operation	2 Helicopters (Rumbek and Bor based) 2230 MT / 885 Round Trips	1 Helicopter (Remove Rumbek heli) 1115 MT / 442 Round Trips
River Operations		
Monthly movements	27 movements / 2325 MT	Max 24 movements / 2065 MT
Common Storage Services		
Common Storage Capacity in Juba	1740 m2	Reduced to 865 m2 o from July 2021
Annual Procurement of Mobile Storage Units (MSUs) availed for loan to partners in deep field	20	10
Expansion of Bor riverside storage space to continue waterways expansion	Expansion by 1,280 m2	Expansion cancelled

In total, the Logistics Cluster's cargo transportation capacity might reduce by **2085 MT** compared to 2020. This is the reason why pre-positioning will be more crucial this year than any other!!!

Operational Cost-Efficiency

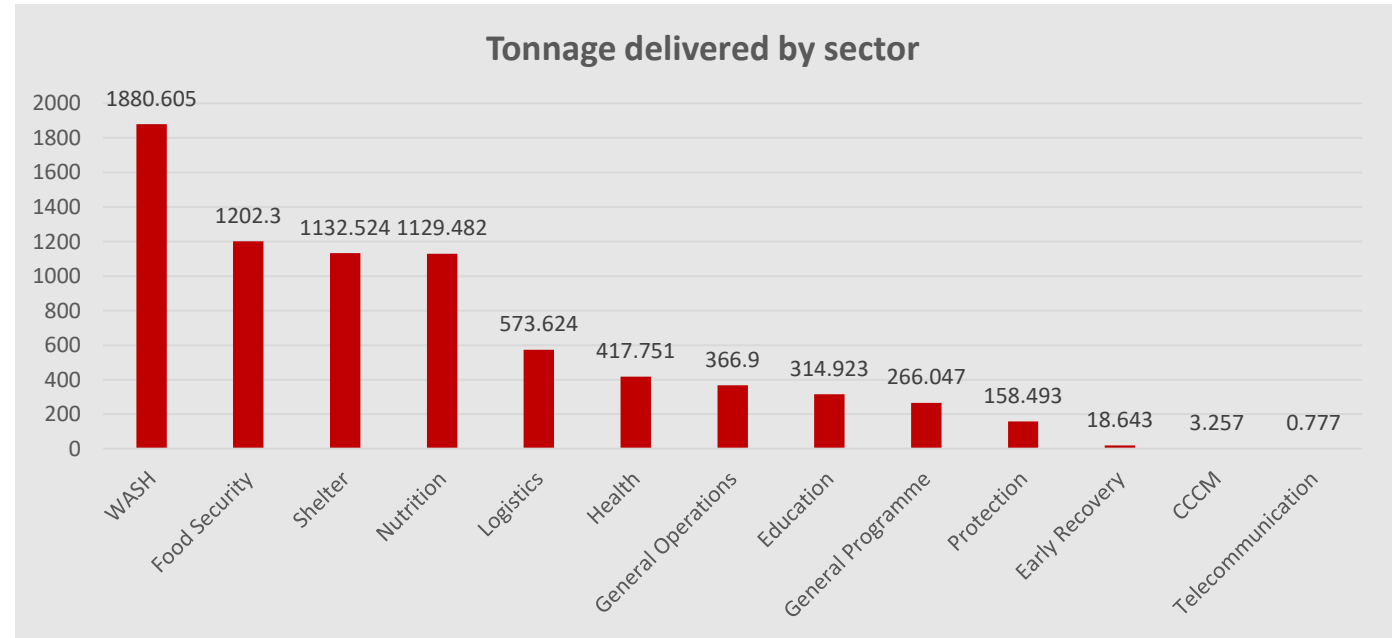
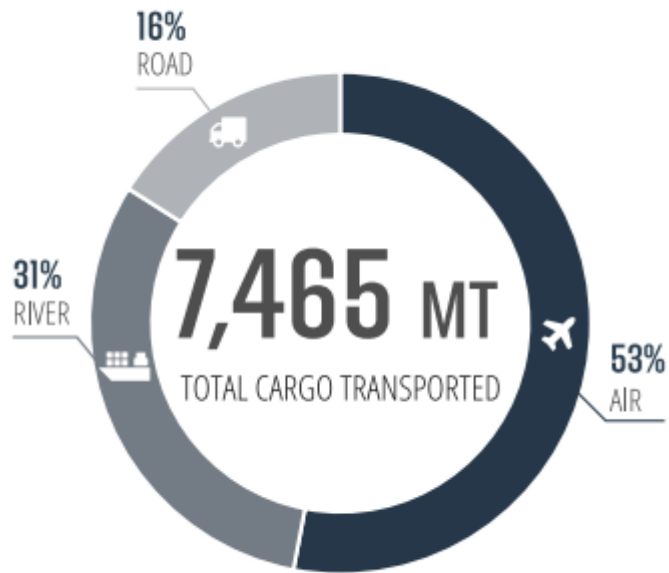


Road Movement River Movement Air Movement Logistics Cluster Annual Expenditures

2020 LC Operational Data Analysis Countrywide



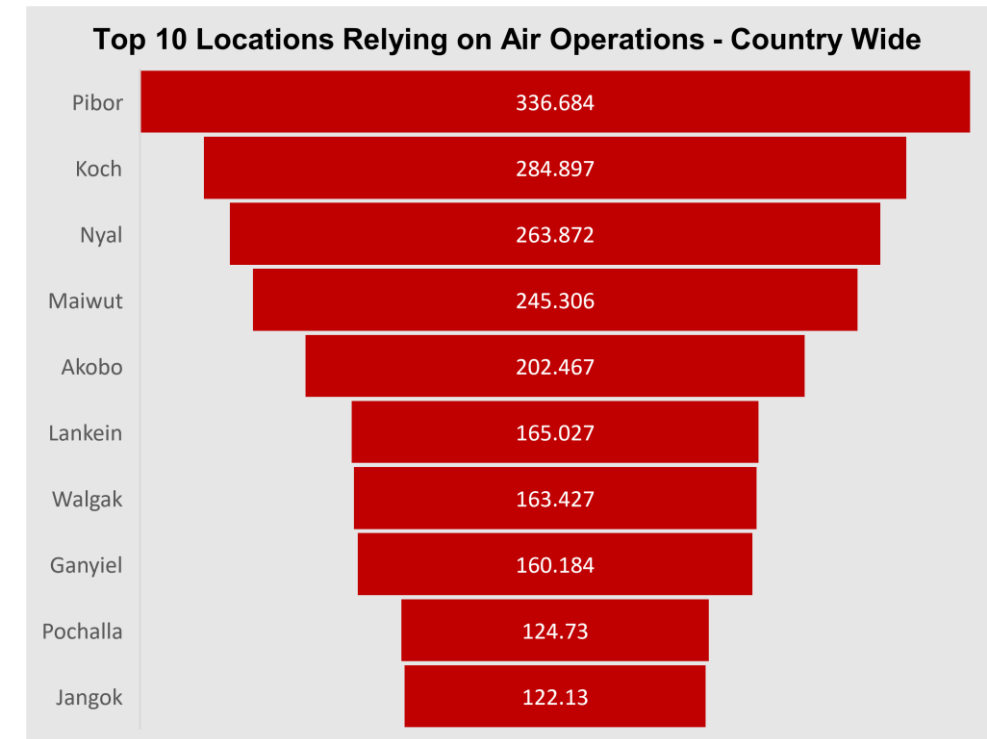
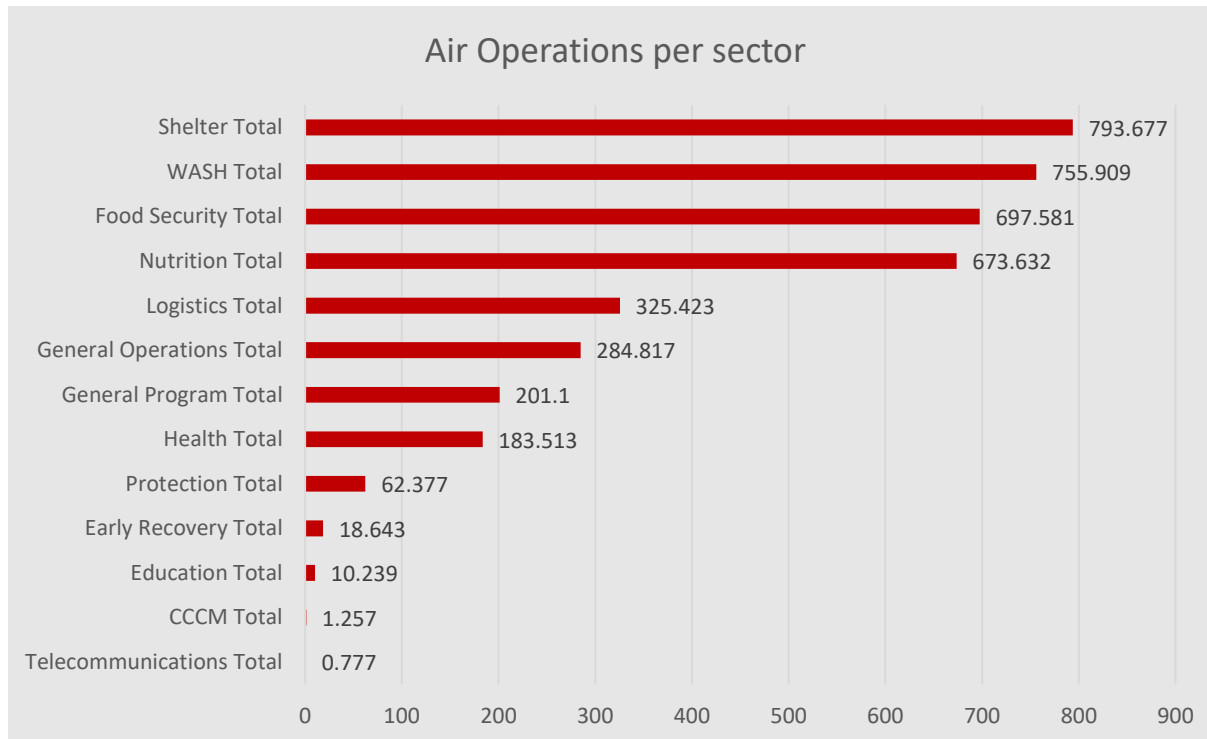
FSL is the 2nd top Cluster Utilizing air operations!!



2020 LC Operational Data Analysis Countrywide



A closer look into Air Operations



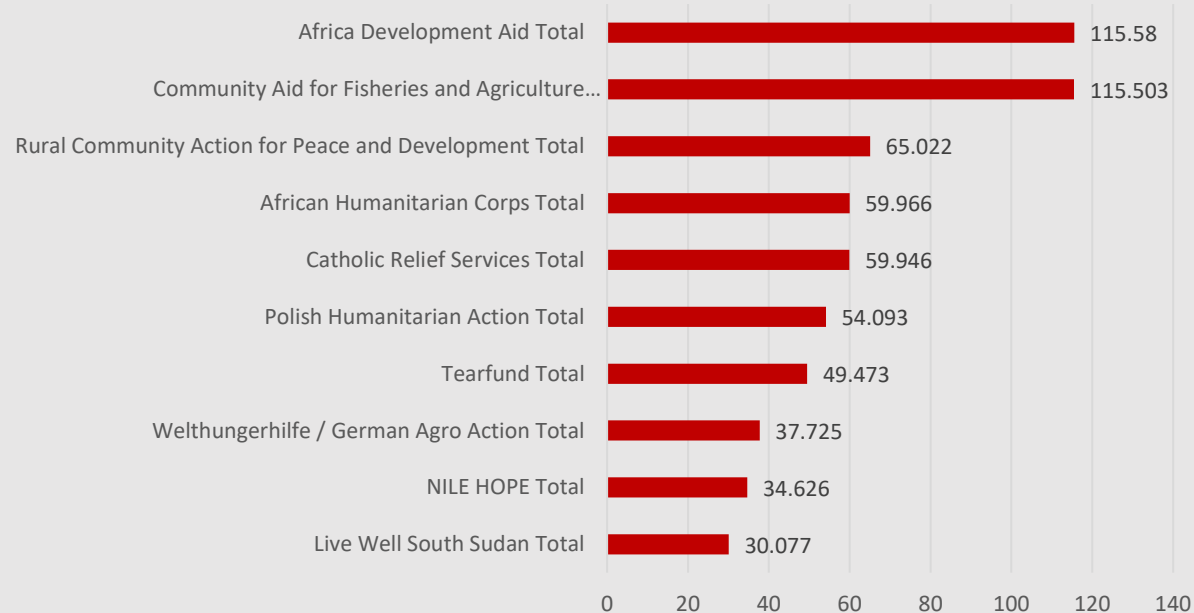
Through the OWG Response Scale Up to Highly Food Insecure Counties, we are addressing Pibor & Akobo prepo, but to ensure beneficiaries are provided with the humanitarian assistance in 2020, we also have to look into pre-positioning in other locations relying heavily on air operations!!

Food Security & Livelihood Analysis – Prepo Strategy?

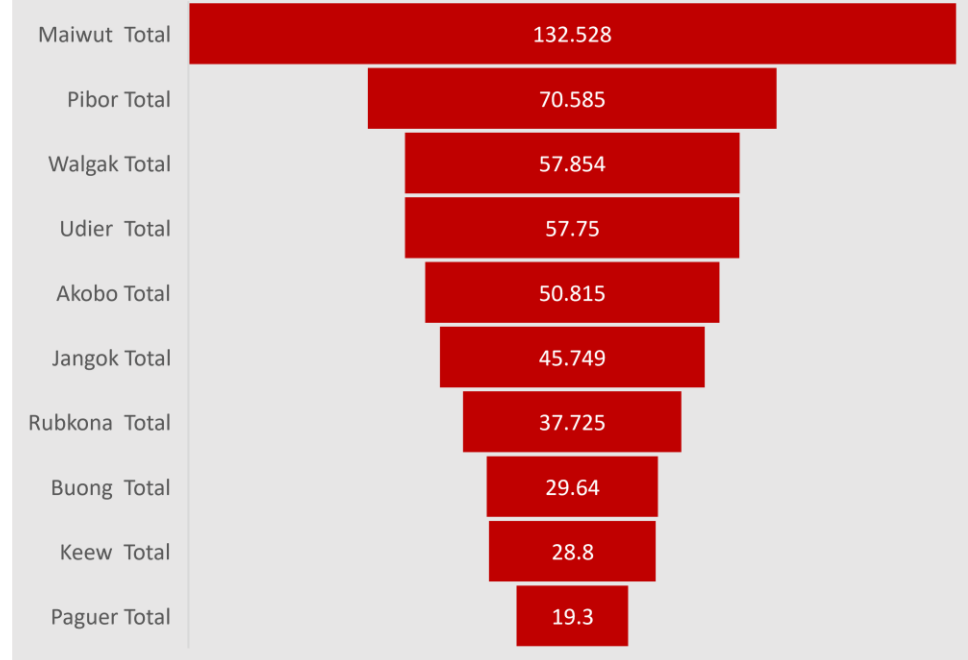


1203 MT of FSL cargo transported in 2020 including 697 MT by air → 57%

Sending Organisations



Top 10 Locations for FSL Cargo air transport

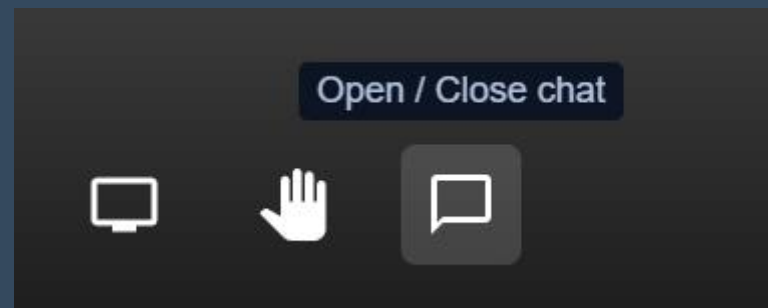


Is there any Pre-positioning strategy in place for these top locations, especially Maiwut?
Is there storage capacity in the ground to facilitate pre-positioning?



AOB?
Discussions?
Questions?

Please write in the chat:



THANK YOU

<https://logcluster.org/ops/ssd11a>

Email: southsudan.clustercargo@wfp.org

