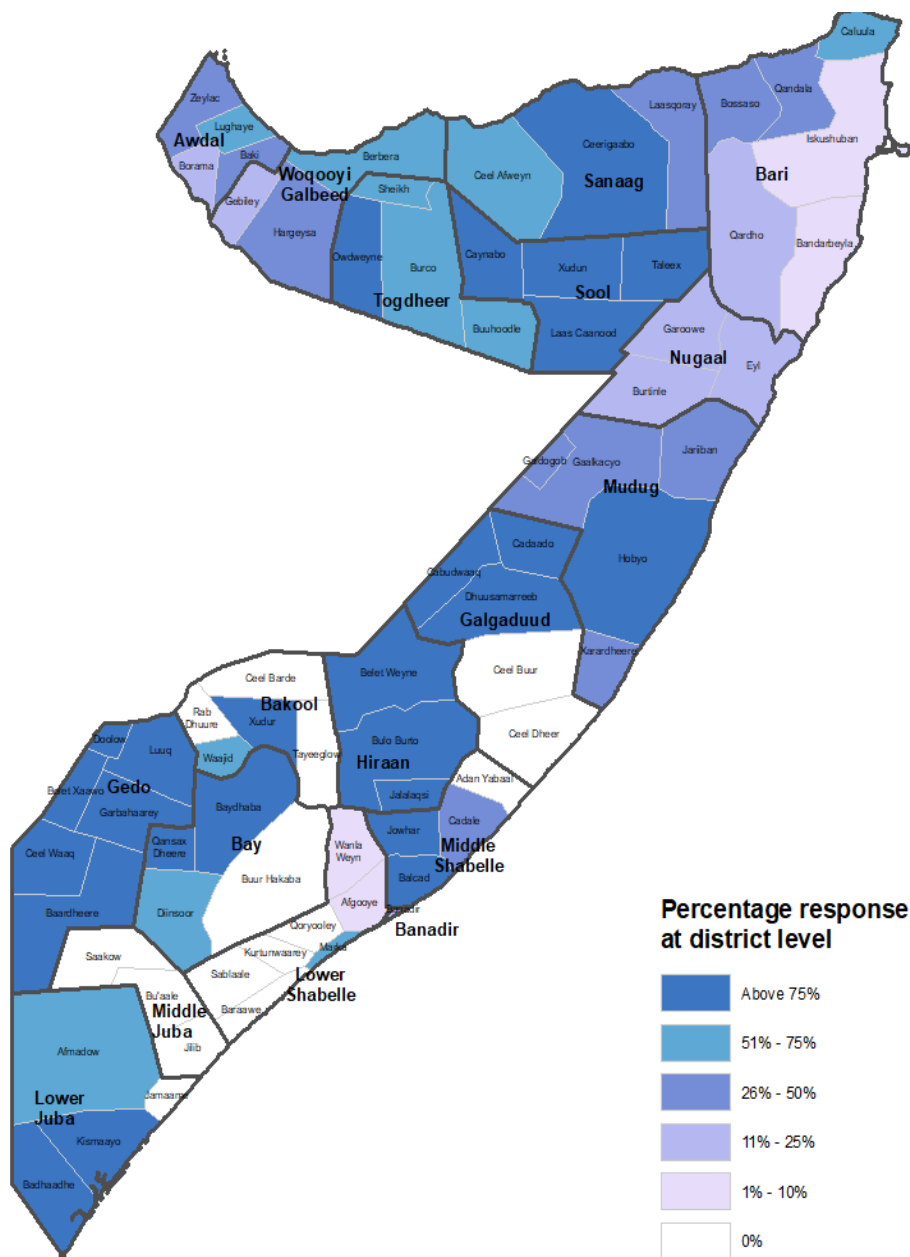
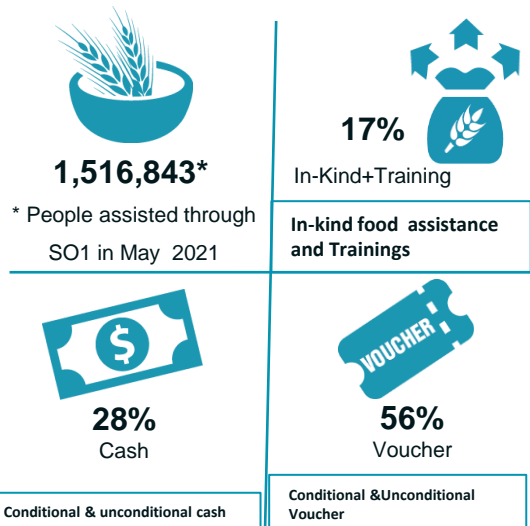


NUMBER OF BENEFICIARIES TARGETED VS ASSISTED BY DISTRICT



RESPONSE BY MODALITY



USD 14 Million Cash/Vouchers Transferred

PEOPLE TARGETED April-June 2021

2.7 M

50% men 50% women

PARTNERS REPORTING

14 partners

Strategic objective 1 update

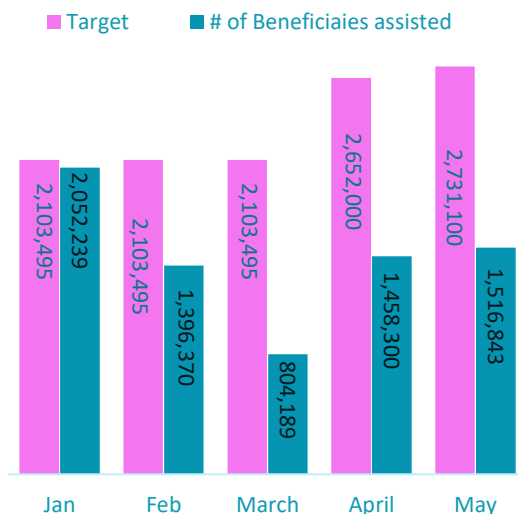


In May, WFP responses constituted 75%, CARE 8%, WVI 7%, SCI 4%, ACTED 3%, and the remaining 4% was provided by QRC, ACF, NRC, FAO, SIF, Mercy corps, SOS, AADSOM and DRC combined.

Responses in Banadir, Lower Shabelle, Middle Juba and Nugaal are less than 20% of the target. For Middle Juba the main challenge is access difficulty due control of militia while in Banadir, Lower Shabelle and Nugal, the main challenge is shortage of funding. The districts with no response in the above map had a target but no response reached.

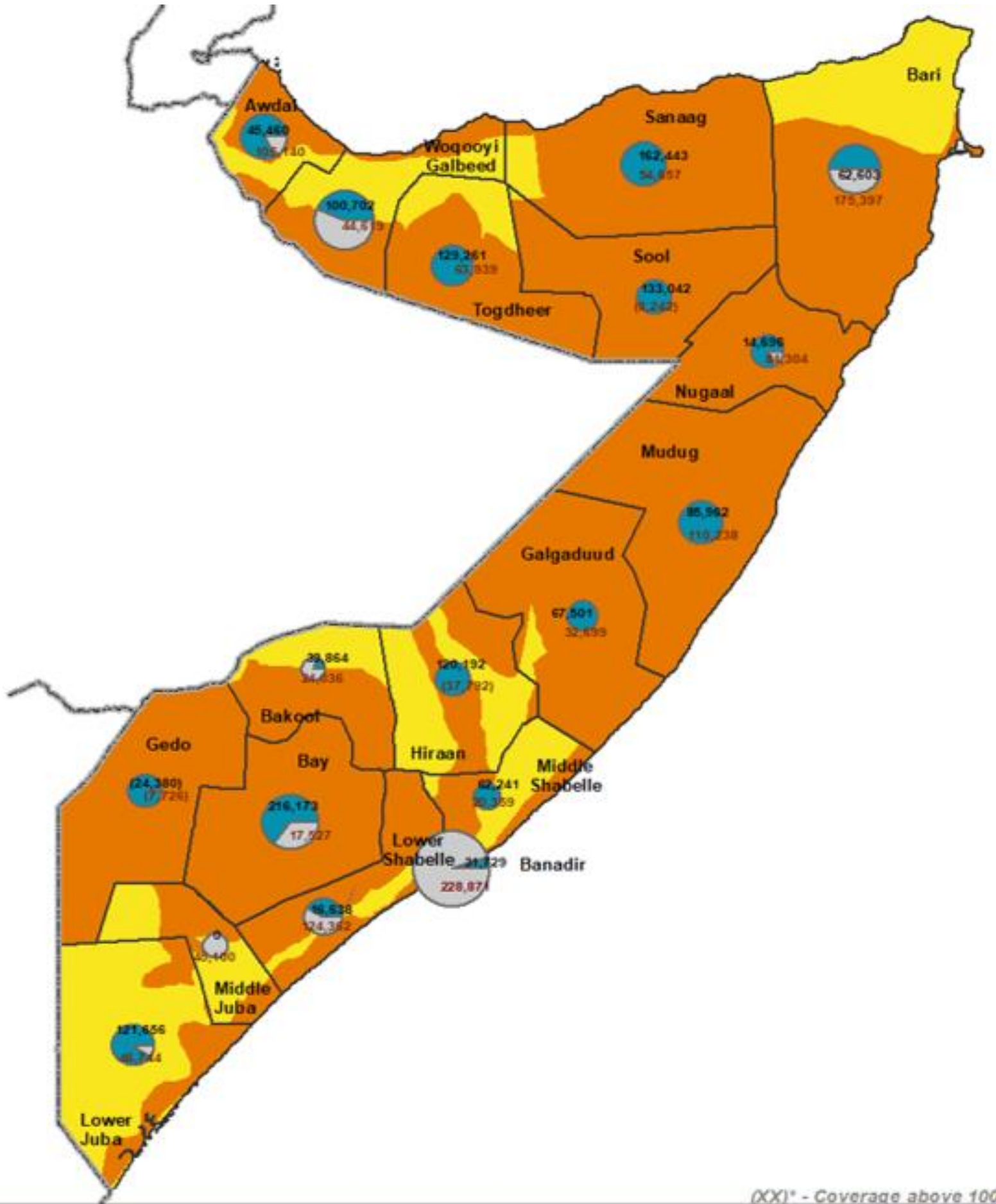
Over 1.3 million people are excluded from assistance due to funding shortfalls. Notably, people assisted with unconditional transfers are mostly those in IPC 3 or worse who experience significant consumption gaps.

Monthly response Jan-May 2021: Beneficiaries assisted



A staff assists a beneficiary to configure her phone at WFP food distribution Centre at KM4 area in Mogadishu. Photo: WFP/ismail Taxta

Under objective 1 (Improving Access to Food through Conditional and Unconditional Transfers (Cash, Vouchers and In-Kind) FSC partners assisted 1,516,843 people out of 2,731,100 targeted for the month of May (56% achievement).

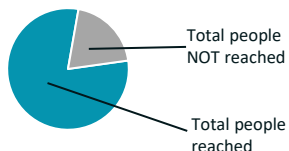


(XXI)* - Coverage above 100

Date created: 15th June 2021
 Contact: Info.somalia@fscluster.org
 Website: www.fscluster.org/somalia
 Prepared by: FSCIM

Map Source: FSNAU/FEWS NET.

2,731,100 (Target April-June 2021)



IPC
 Food Security Classification
 Proj: April-June 2021



Boundary



Data sources: UNGIWG, GeoNames, GAUL, UNDP Somalia (1998), FSNAU, WFP FSC partners,

The boundaries and names shown and the designations used on this map do not imply official endorsement or acceptance by the United Nations.