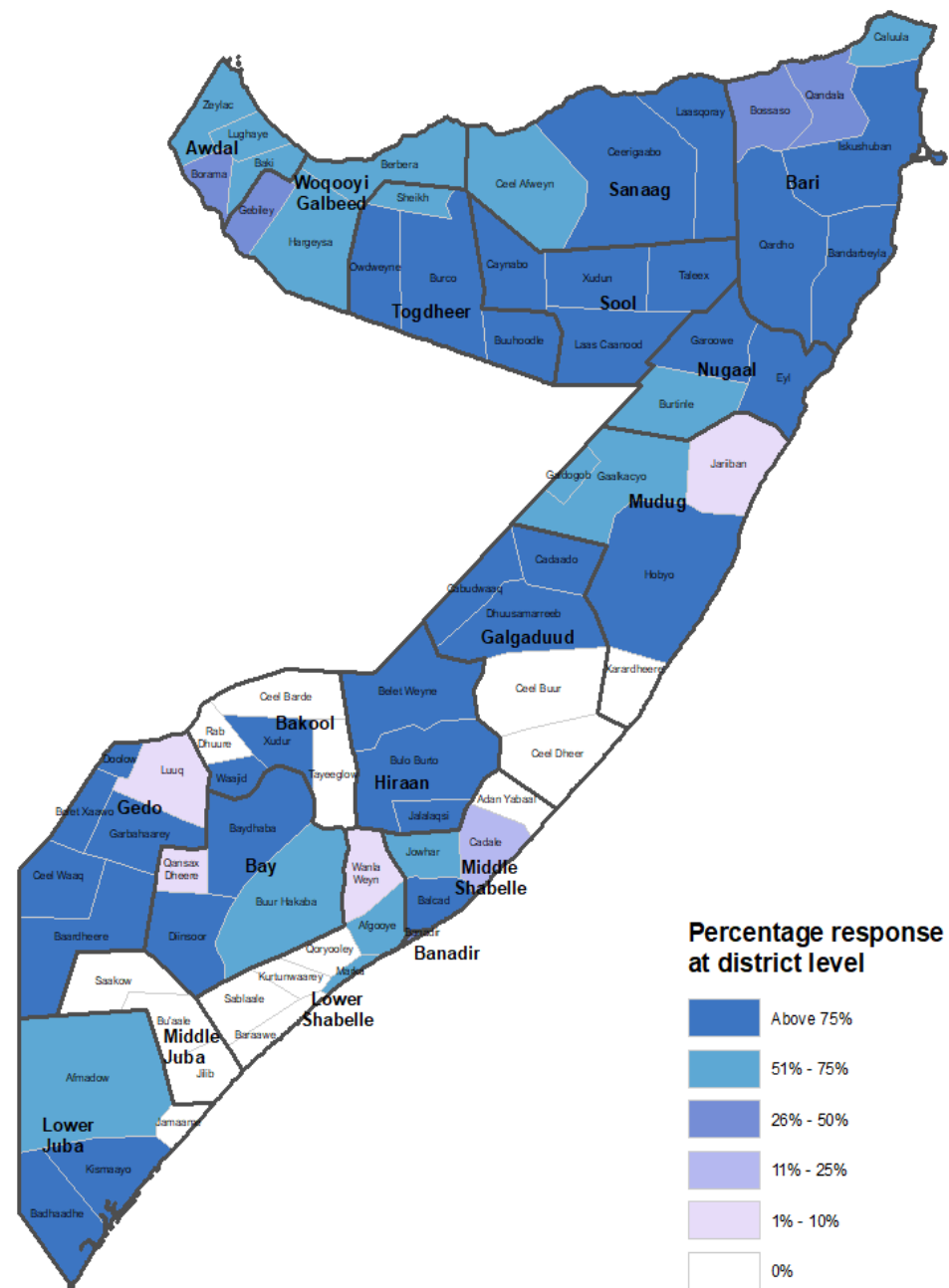
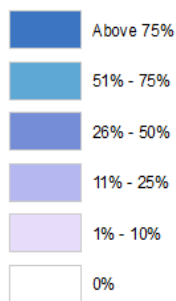


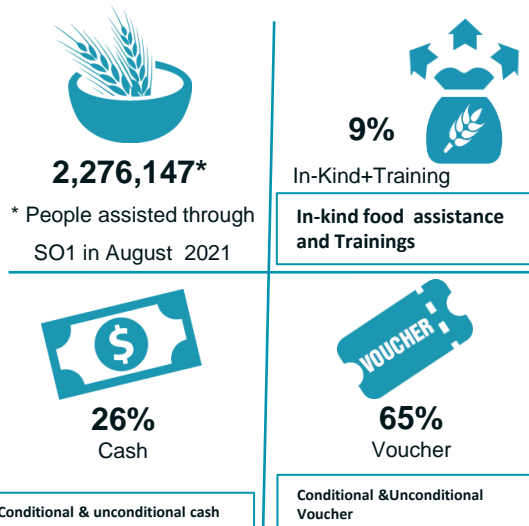
NUMBER OF BENEFICIARIES TARGETED VS ASSISTED BY DISTRICT



Percentage response at district level



RESPONSE BY MODALITY



USD 20.1 Million Cash/Vouchers Transferred

PEOPLE TARGETED July-Sep 2021

2.8 M

50% men **50% women**

PARTNERS REPORTING

20 partners

Strategic objective 1 update



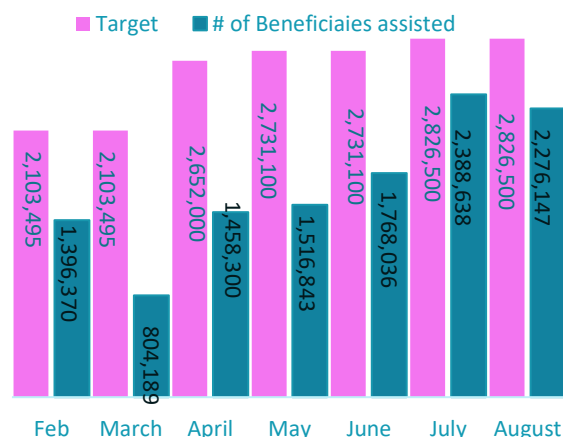
WFP and partners observe COVID-19 prevention measures. In photo Beneficiaries wash their hands at a WFP food distribution Centre at K4 area in Mogadishu., Photo: WFP/Ismaïl Taxta

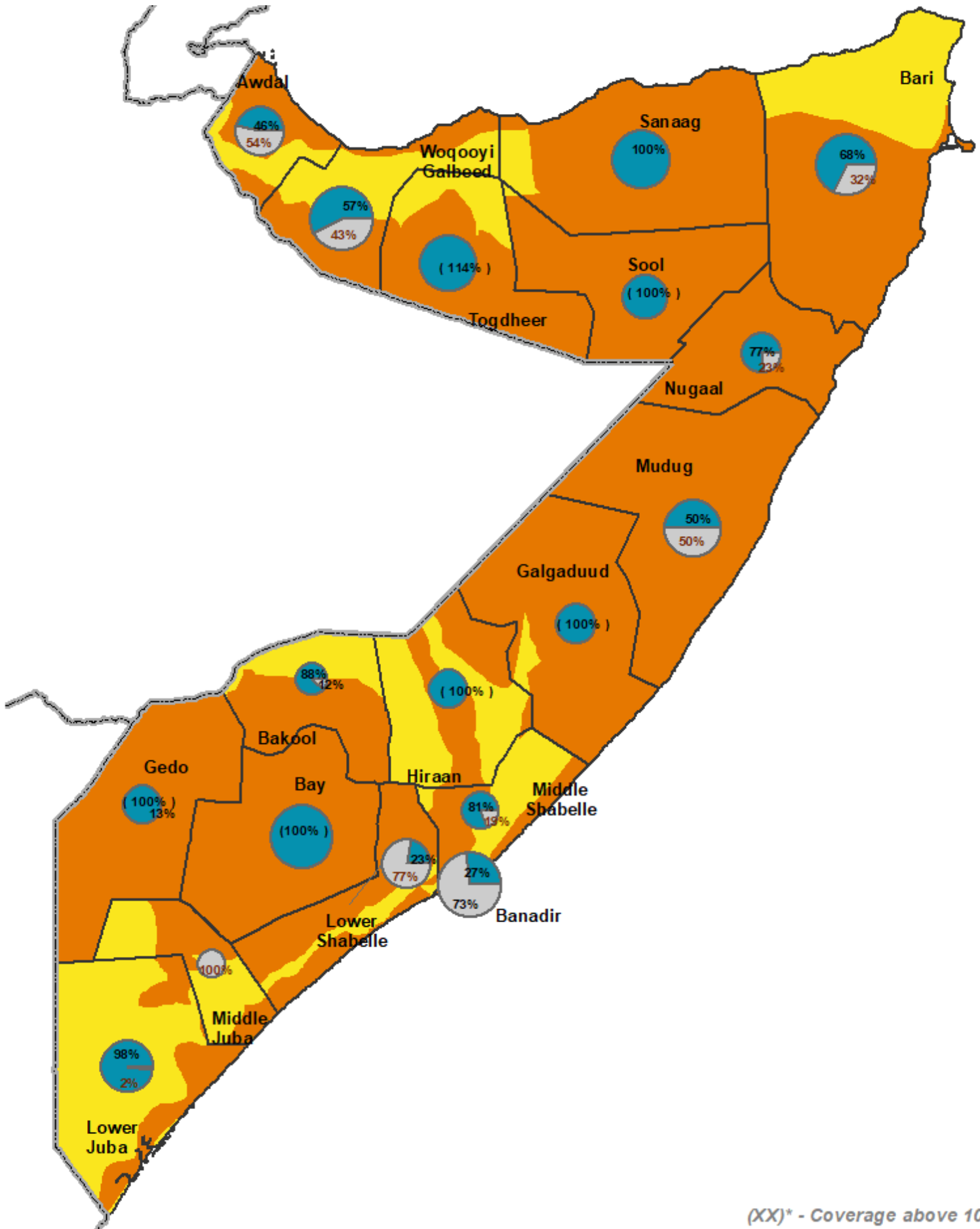
In August, WFP responses constituted 72%, FAO 8%, SCI 7%, ACTED 4%, & WV 3%, NRC 2%, and the remaining 4% was provided by QRCs, IRC, ACF, DRC, SIF Oxfam, Mercy Corps, SOS, Qatar Charity Candlelight, AADSOM, WHH, IRW and ASEP combined.

Responses in Banadir, Lower Shabelle and Middle Juba are less than 30% of the target. Nearly 1.2 million people are excluded from assistance mainly due to funding shortfalls. Notably, people assisted with unconditional transfers are mostly those in IPC 3 or worse who experience significant consumption gaps.

Under objective 1 (Improving Access to Food through Conditional and Unconditional Transfers (Cash, Vouchers and In-Kind), FSC partners assisted 2,276,147 people out of 2,826,500 targeted (81% achievement)

Monthly response Jan-August 2021: Beneficiaries assisted



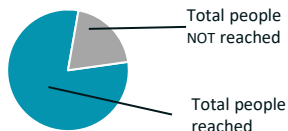


(XX)* - Coverage above 100%

Date created: 15th Sep 2021
 Contact: Info.somalia@fscluster.org
 Website: www.fscluster.org/somalia
 Prepared by: FSCIM

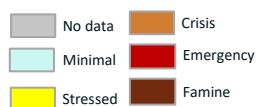
Map Source: FSNAU/FEWS NET.

2,826,500 (Target July- Sep 2021)



Total people NOT reached
 Total people reached

IPC
 Food Security Classification
 Proj: July - Sep 2021



Boundary



Data sources: UNGIWG, GeoNames, GAUL, UNDP Somalia (1998), FSNAU, WFP FSC partners,

The boundaries and names shown and the designations used on this map do not imply official endorsement or acceptance by the United Nations.