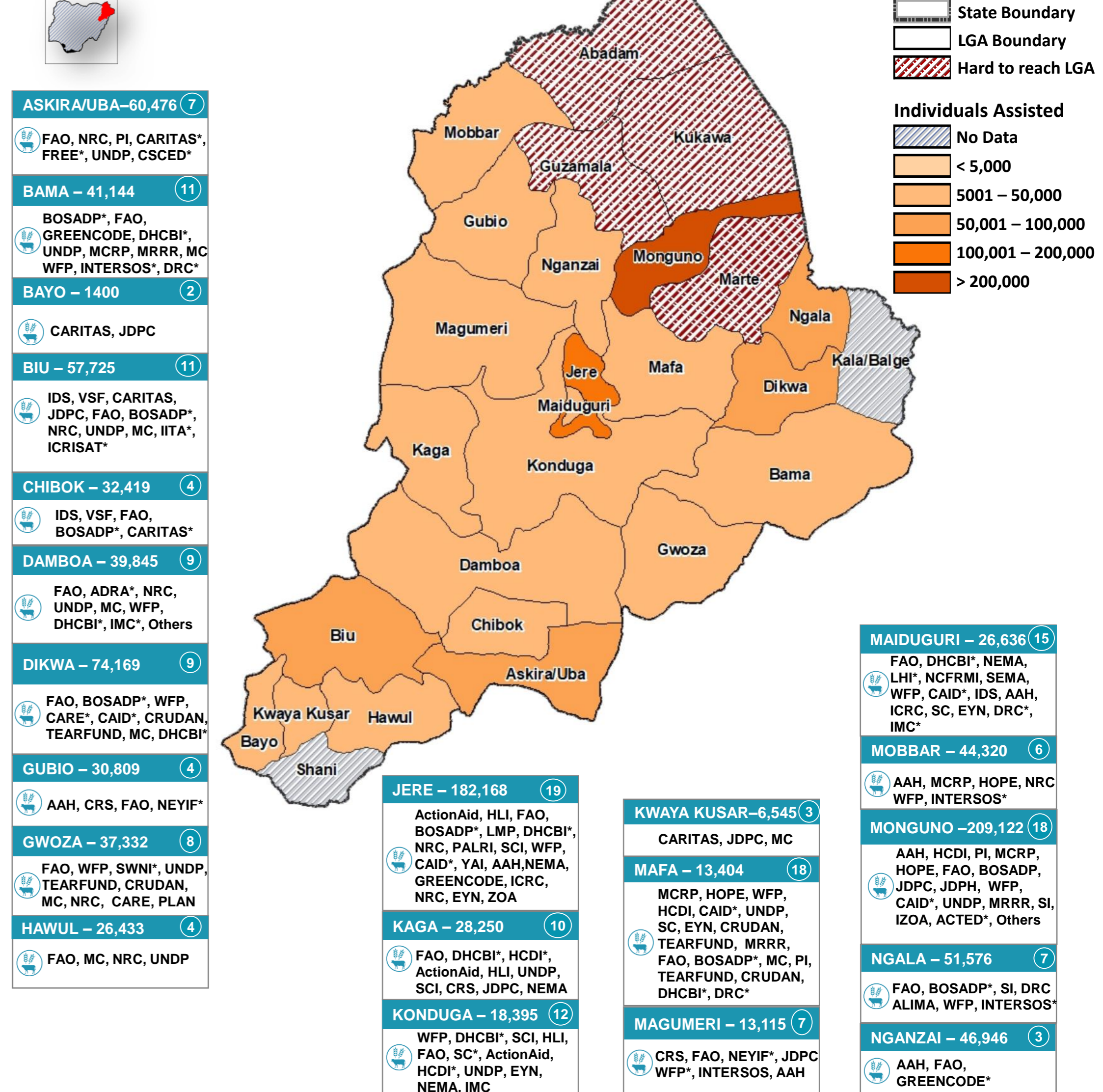
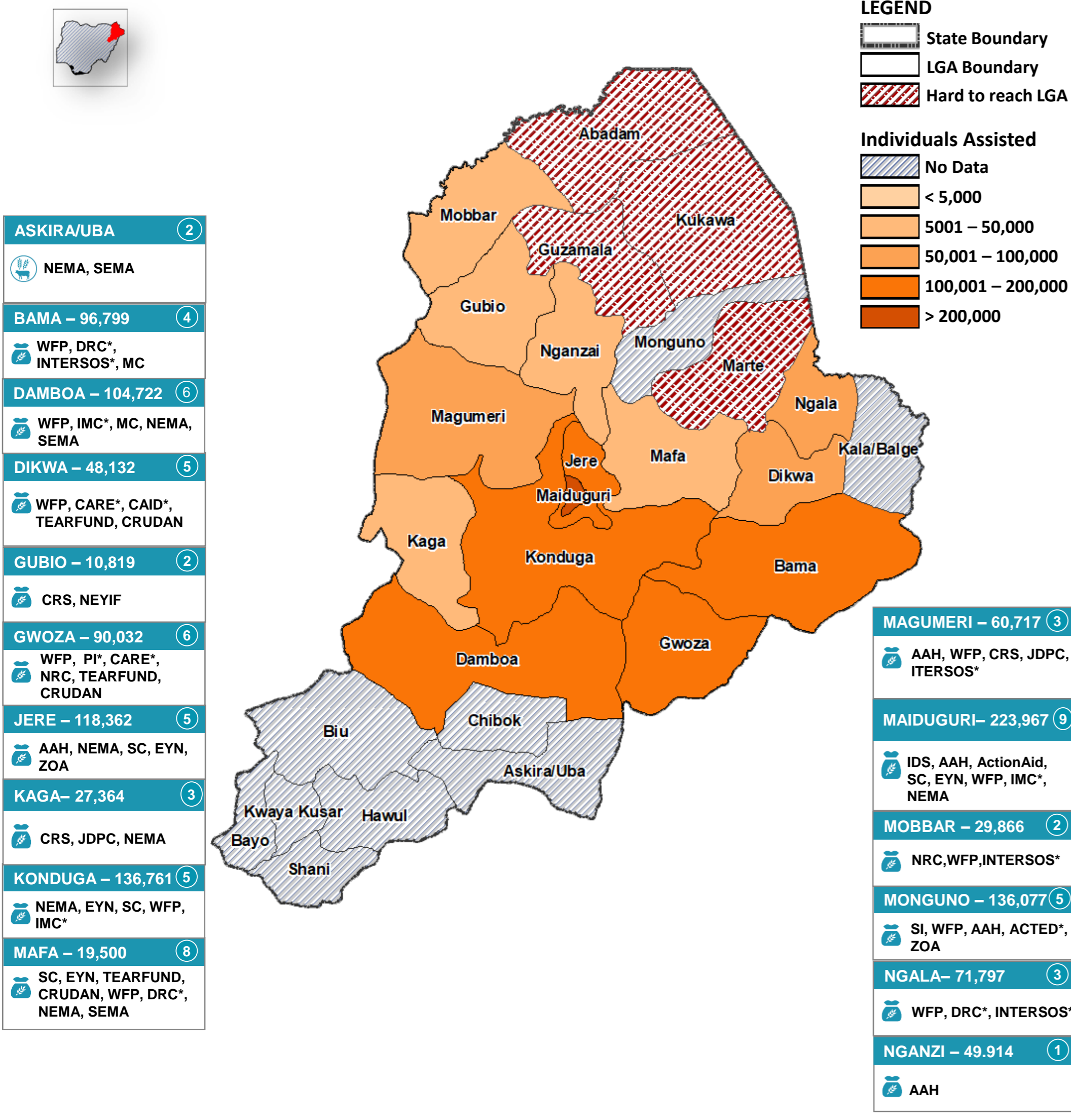


SO1 - FOOD ASSISTANCE

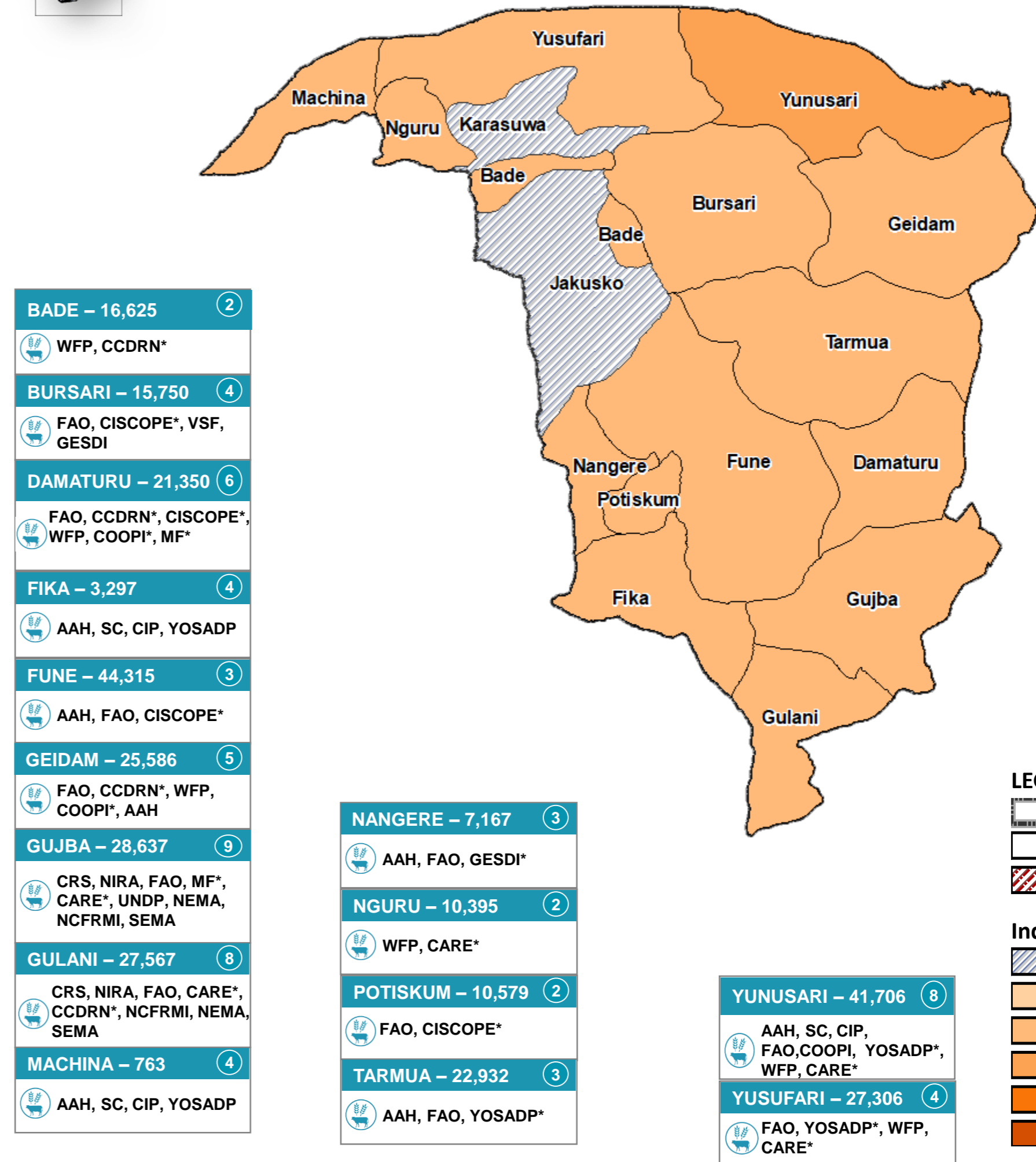
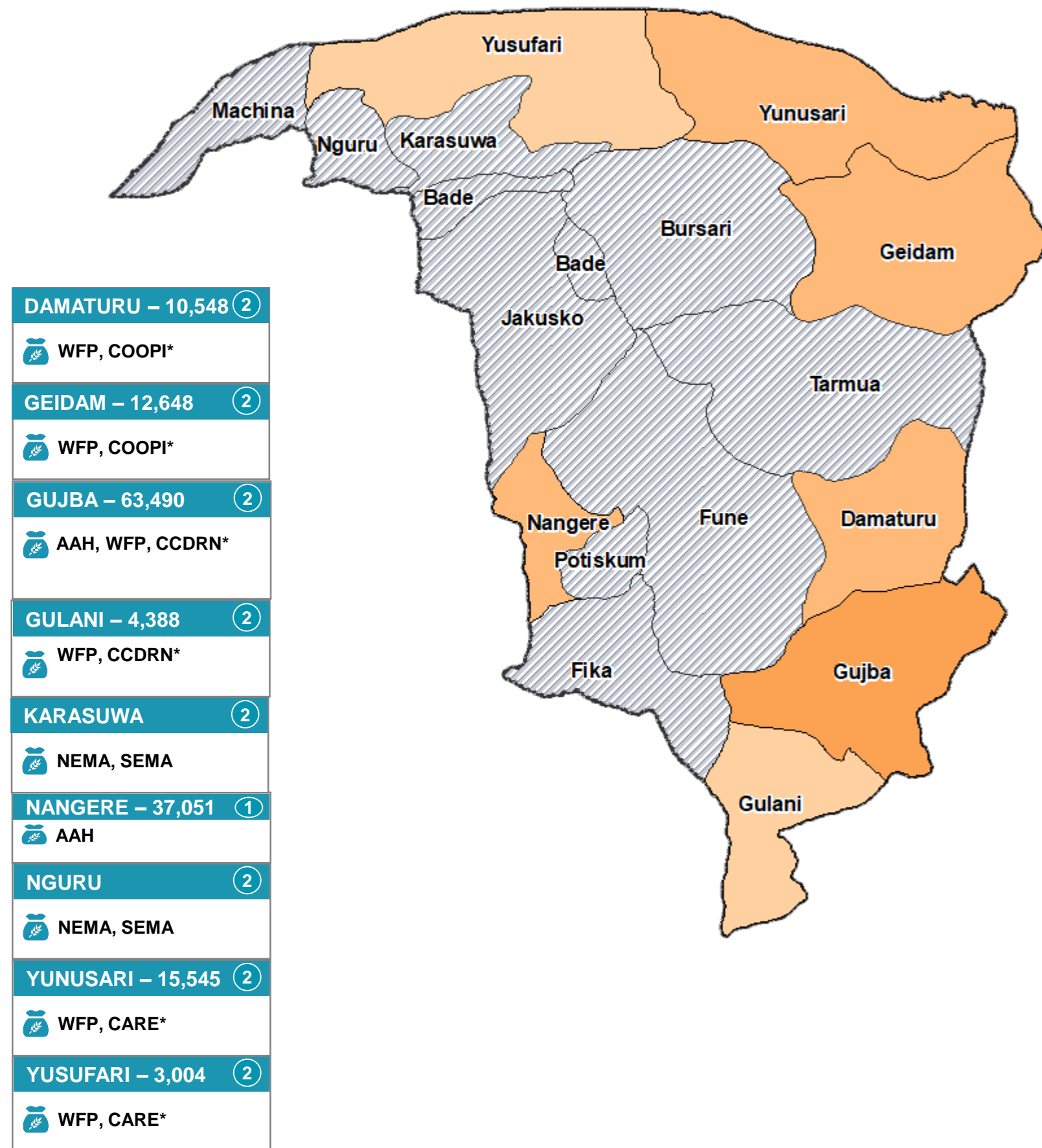
SO2 - AGRICULTURE & LIVELIHOODS



SO1 PARTNERS 25	SO2 PARTNERS 45	SO1 - ASSISTED 1.3M	TOTAL POPULATION ASSISTED IN BORNO STATE *2.2M	SO2 - CUMULATIVELY ASSISTED 1.2M	SO1 In-Kind: 570K Cash/Vouchers: 804K	SO2 In-Kind: 804k Cash/Vouchers: 365k	MODALITY
--------------------------------------	--------------------------------------	------------------------------------------	---------------------------------------------------------------------	-------------------------------------------------------	------------------------------------------------------------------	------------------------------------------------------------------	-----------------

SO1 - FOOD ASSISTANCE

SO2 - AGRICULTURE & LIVELIHOODS



LEGEND

- State Boundary
- LGA Boundary
- Hard to reach LGA

Individuals Assisted

- No Data
- < 5,000
- 5001 – 50,000
- 50,001 – 100,000
- 100,001 – 200,000
- > 200,000

LEGEND

- State Boundary
- LGA Boundary
- Hard to reach LGA

Individuals Assisted

- No Data
- < 5,000
- 5001 – 50,000
- 50,001 – 100,000
- 100,001 – 200,000
- > 200,000

SO1 PARTNERS



7

SO2 PARTNERS



20

SO1 - ASSISTED



146K

TOTAL POPULATION ASSISTED IN YOBE STATE



***413K**

SO2 - CUMULATIVELY ASSISTED



384K

In-Kind



6K

140K



SO1

6K

140K

SO2

232K

152K

MODALITY

Sector's online dashboard:

<https://public.tableau.com/profile/ng.food.security.ysector#/vizhome/shared/S4CCXRC39>

The boundaries and names shown and the designations used on this map do not imply official endorsement or acceptance by the UN.

Disclaimer: This dashboard captures information available at the moment of production based on partners' reporting.

TOTAL*: It refers to unique individuals assisted (without double counts) as some beneficiaries were assisted under both SOs.

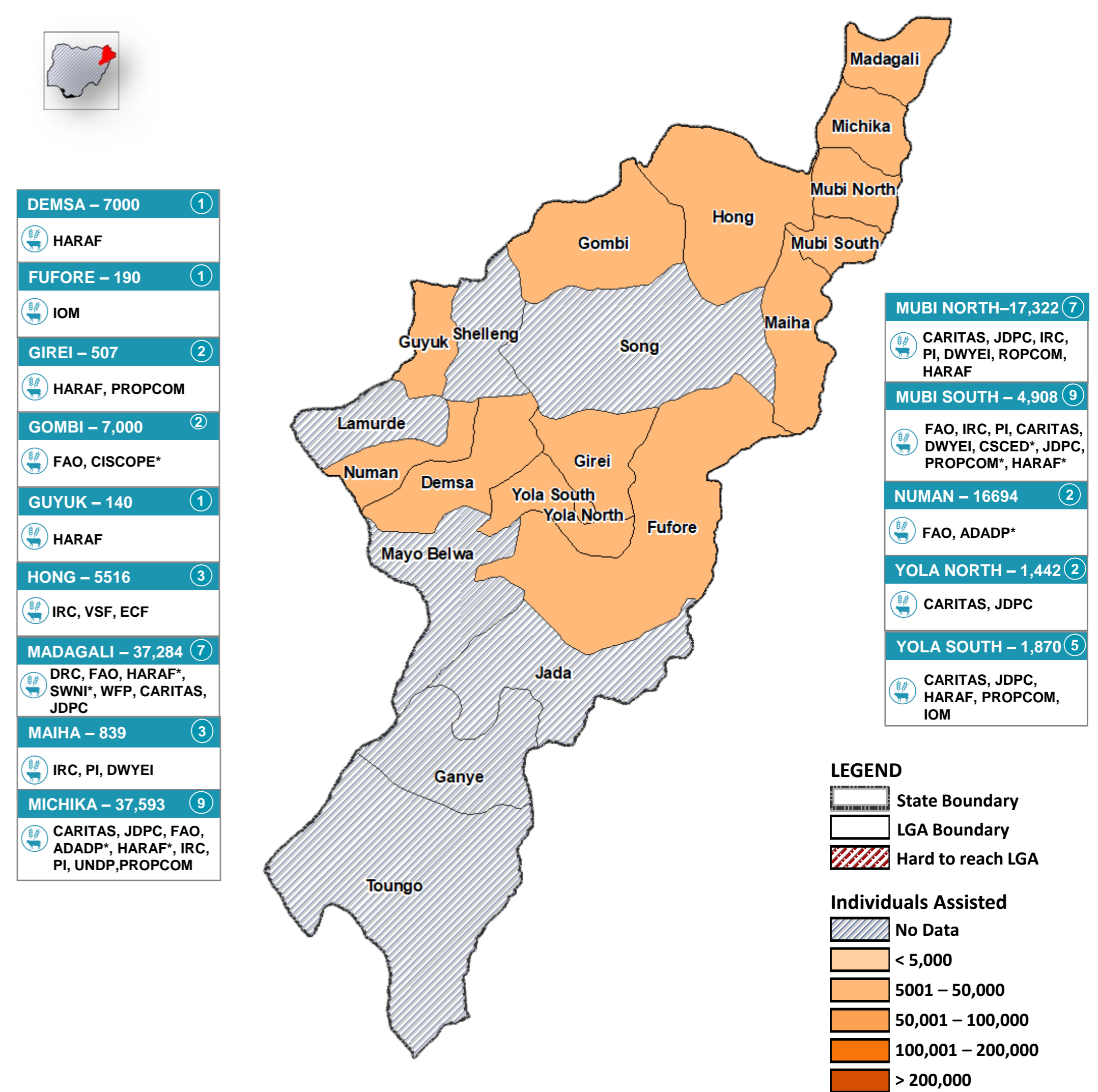
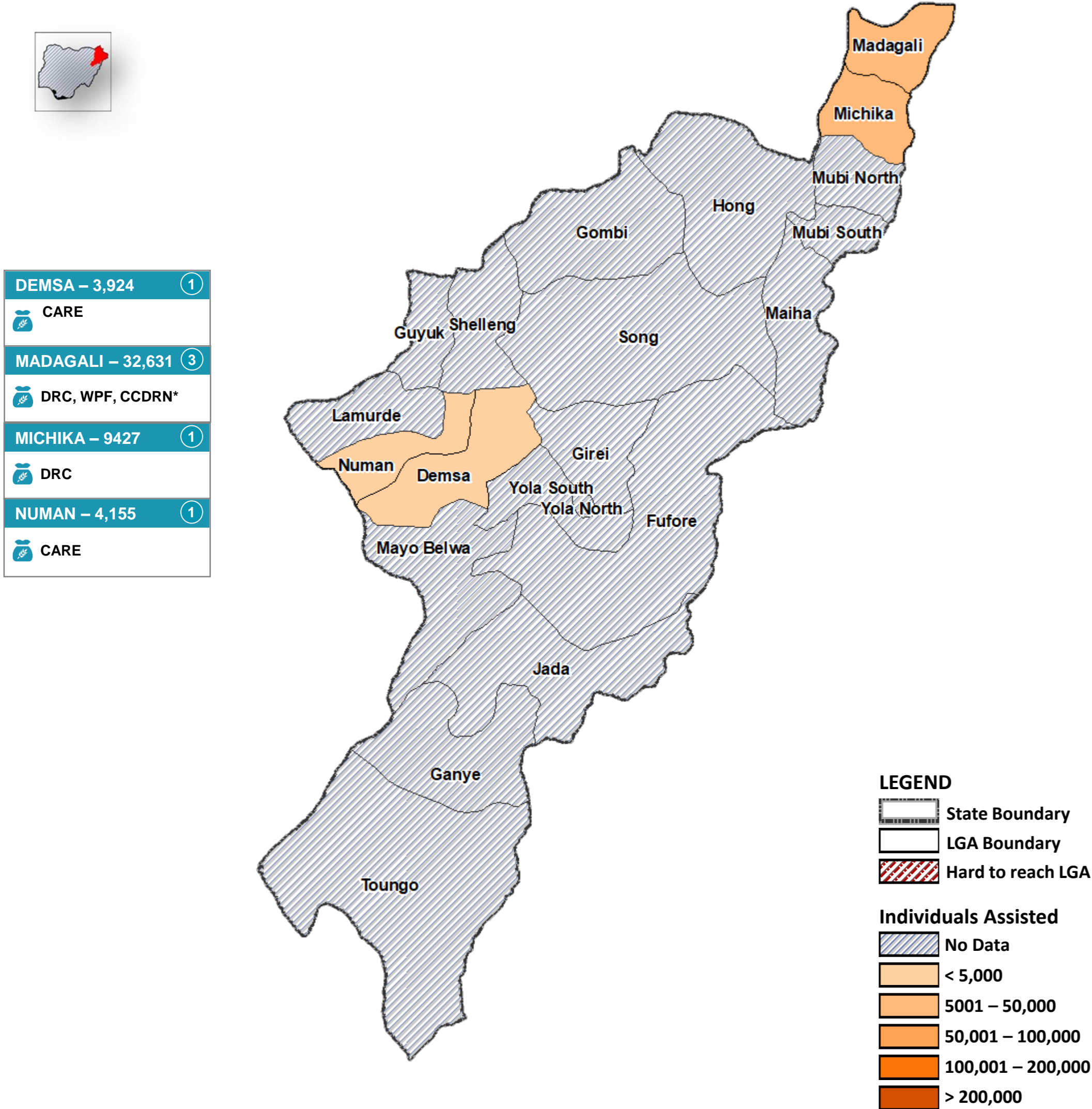
Organizations*: Partners who also implement activities with FAO and/or WFP.

Production date: 30 - December - 2019
 Data sources: FSS 5Ws data for November 2019 /FSS Partners

Contact: Nigeria Food Security Sector
info.Nigeria@fsscluster.org

SO1 - FOOD ASSISTANCE

SO2 - AGRICULTURE & LIVELIHOODS



SO1 PARTNERS 4	SO2 PARTNERS 17	SO1 - ASSISTED 54K	TOTAL POPULATION ASSISTED IN ADAMAWA STATE *188K	SO2 - CUMULATIVELY ASSISTED 157K	SO1 In-Kind: 10K Cash/Vouchers: 44K	SO2 In-Kind: 137K Cash/Vouchers: 20K	MODALITY
-------------------------------------	--------------------------------------	-----------------------------------------	-----------------------------------------------------------------------	-------------------------------------------------------	----------------------------------------------------------------	-----------------------------------------------------------------	-----------------