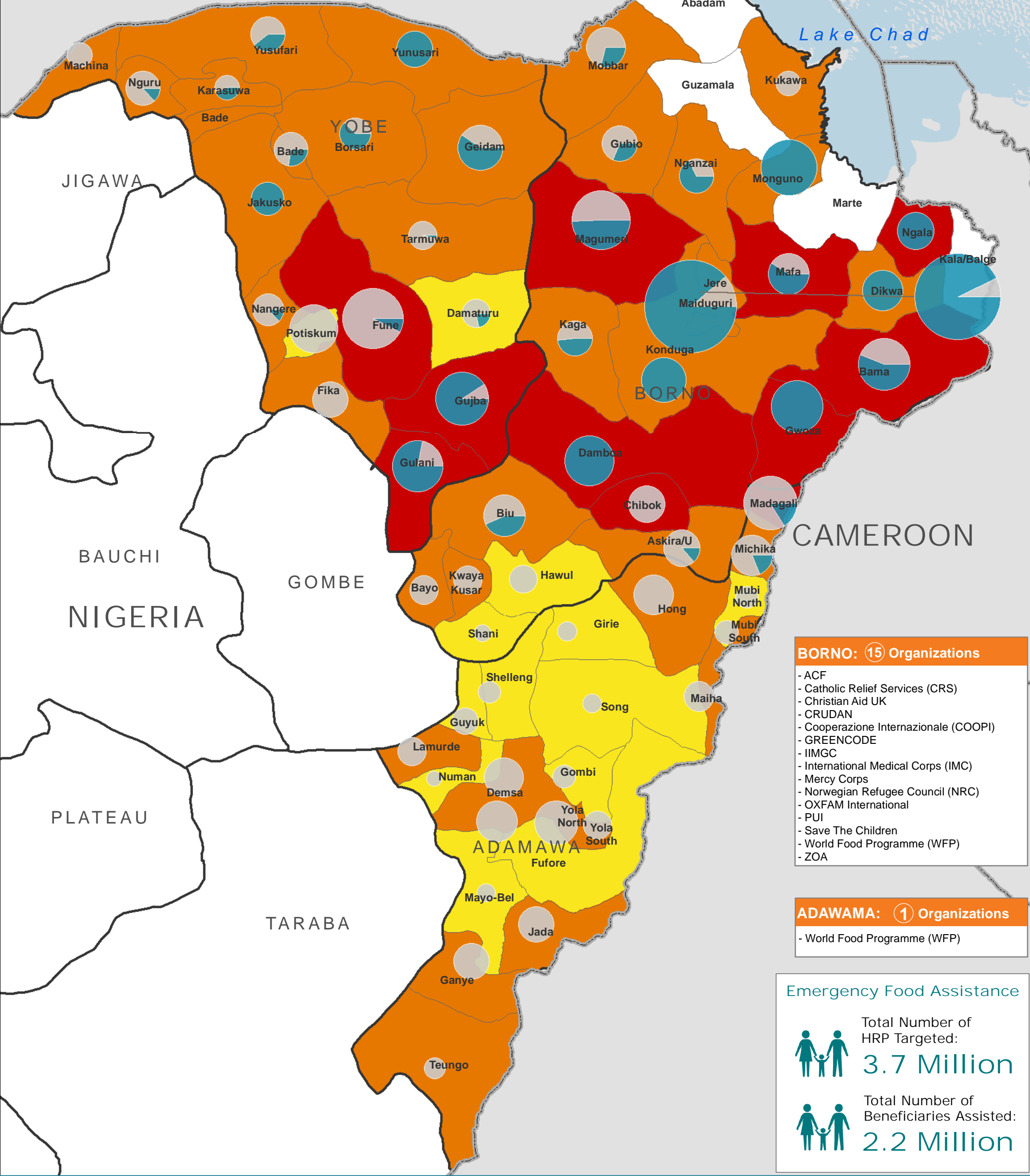




**YOBE: 4 Organizations**

- ACF
- Catholic Relief Services (CRS)
- Cooperazione Internazionale
- World Food Programme (WFP)



**BORNO: 15 Organizations**

- ACF
- Catholic Relief Services (CRS)
- Christian Aid UK
- CRUDAN
- Cooperazione Internazionale (COOPI)
- GREENCODE
- IIMGC
- International Medical Corps (IMC)
- Mercy Corps
- Norwegian Refugee Council (NRC)
- OXFAM International
- PUI
- Save The Children
- World Food Programme (WFP)
- ZOA

**ADAWAMA: 1 Organizations**

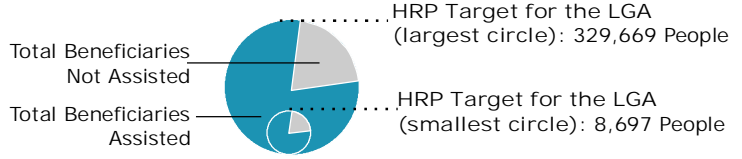
- World Food Programme (WFP)

**Emergency Food Assistance**

Total Number of HRP Targeted:  
**3.7 Million**

Total Number of Beneficiaries Assisted:  
**2.2 Million**

Date Created: 03 January 2018  
 Contact: info.nigeria@fsccluster.org  
 Website: http://fsccluster.org/nigeria  
 Prepared by: FSS Nigeria



**Cadre Harmonise**  
 June - August 2018 (Projection)

- No Data
- Minimal
- Stressed
- Crisis
- Emergency
- Famine

- Major Town
- Intermediate Town
- Small Town
- Country Boundary
- State Boundary

Data sources: WFP, UNGIWI, GeoNames, GAUL

The boundaries and names shown and the designations used on this map do not imply official endorsement or acceptance by the United Nations.