

PEOPLE TARGETED – 2021 HRP

4.3 Million People in Need
(March Period: March – May 2021 - Population in Phase 3-5)

3 North-East States

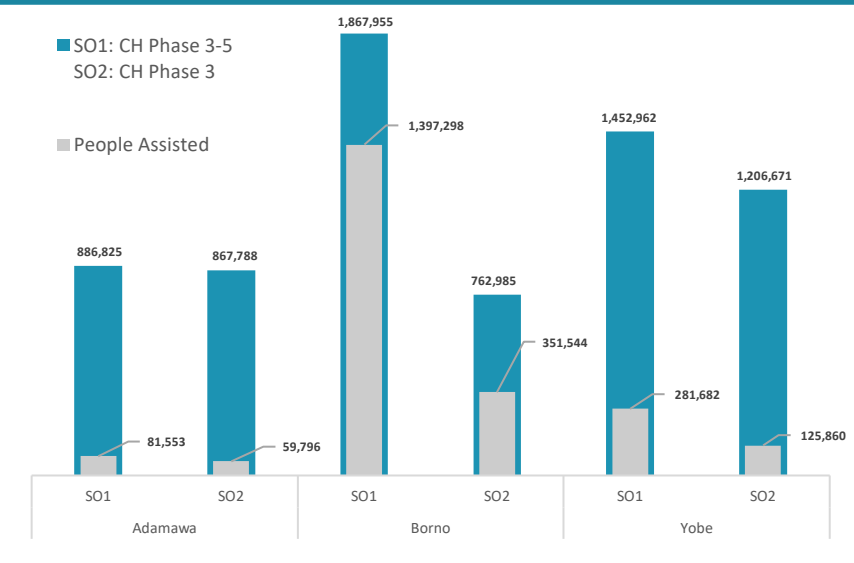
FUNDING REQUIRED – 2021 HRP

354* MILLION

\$XXM Unmet
\$XX Resourced

Data Source: OCHA Financial Tracking System (FTS) (as of 25 May 2021)

INTERVENTION BY STATE – SO1 & SO2



SAFE ACCESS TO FUEL & ENERGY

SAFE SAFE ACCESS TO FUEL AND ENERGY

144 HHs supported with fuel efficient stoves, use/production of alternative energy, production of fuel-efficient stoves, and SAFE & protection awareness raising outreach

Fuel efficient Stoves distribution reached 71 HHs beneficiaries in Bama and 71 HHs beneficiaries in Dikwa LGA (Borno State)

FOOD SECURITY OBJECTIVE 1: Food Assistance

SO1 - Improve the most vulnerable crisis-affected people's access to timely and appropriate food assistance to meet their immediate food needs

3.5M targeted (Population in Phase 3-5 (March 2021 Cadre Harmonisé for current period: March – May 2021))

51% Target Reached (calculated on a monthly basis) / 49% (Gap)

1.8M assisted (Number of people assisted in May 2021 under SO1 (In-Kind and Cash/Voucher))

797,916 people assisted with In-Kind

962,617 people assisted with Cash/Voucher

26 Number of Partners who reported Food Assistance interventions in May 2021 including implementing partners

FOOD SECURITY OBJECTIVE 2: Agriculture and Livelihoods

SO2 - Strengthen resilience of crisis-affected people by re-establishing, improving and diversifying key agriculture livelihoods

3.0M targeted (Population in Phase 3 (March 2021 Cadre Harmonisé for current period: March - May 2021))

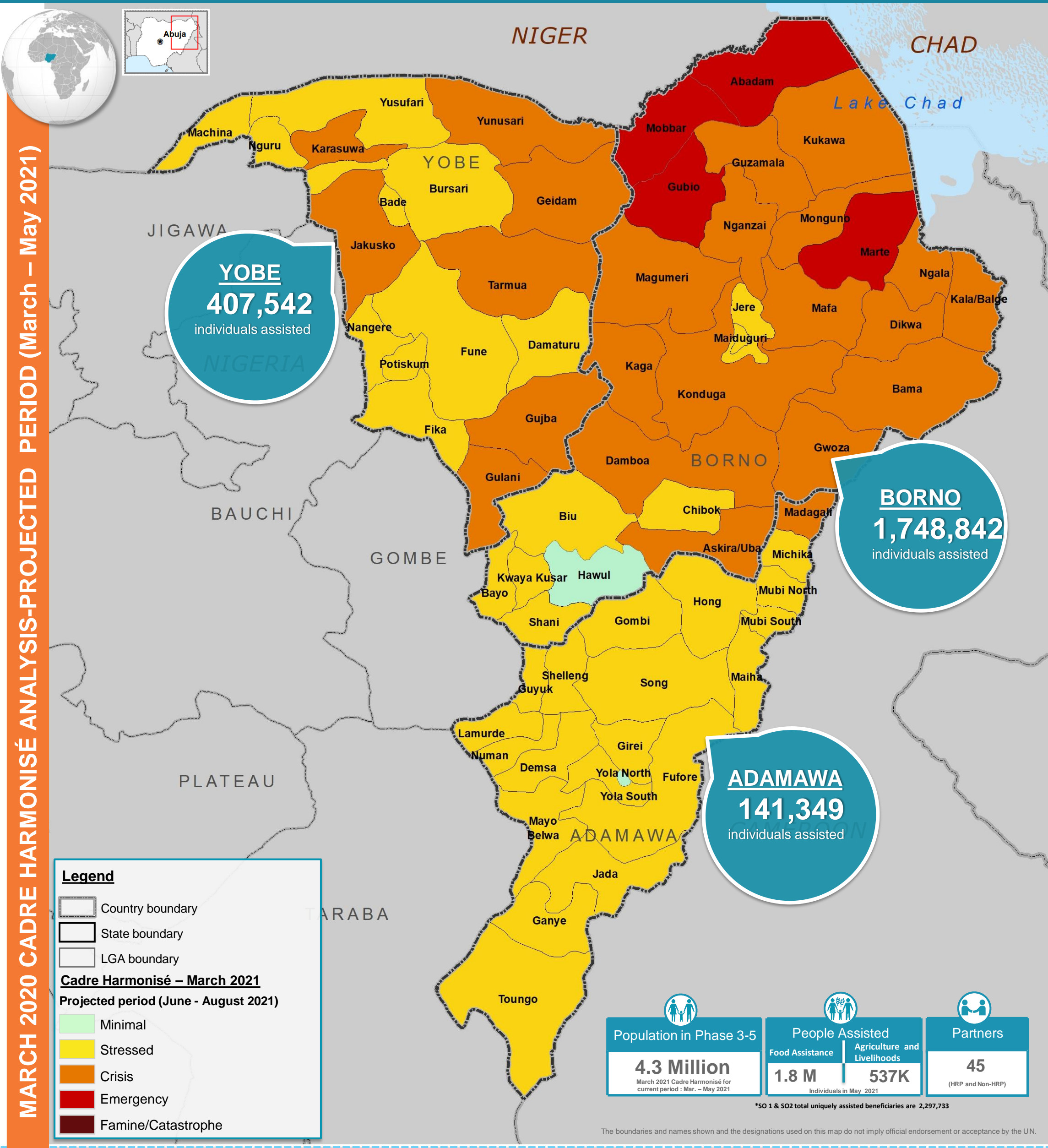
18% Target Reached (calculated on a yearly basis) / 82% (Gap)

537k assisted (Number of people assisted in May 2021 under SO2 (In-Kind and Cash/Voucher))

404,405 people assisted with In-Kind

132,795 people assisted with Cash/Voucher

30 Number of Partners who reported Agriculture and Livelihoods interventions in May 2021 including implementing partners



MARCH 2020 CADRE HARMONISÉ ANALYSIS-PROJECTED PERIOD (March – May 2021)

Legend

- Country boundary
- State boundary
- LGA boundary

Cadre Harmonisé – March 2021
Projected period (June - August 2021)

- Minimal
- Stressed
- Crisis
- Emergency
- Famine/Catastrophe

Population in Phase 3-5 4.3 Million <small>March 2021 Cadre Harmonisé for current period: Mar. – May 2021</small>	People Assisted Food Assistance 1.8 M <small>Individuals in May 2021</small>	Partners Agriculture and Livelihoods 537K <small>(HRP and Non-HRP)</small>
--	--	--

*SO 1 & SO2 total uniquely assisted beneficiaries are 2,297,733