

**PEOPLE TARGETED – 2022 HRP**

**4.1** Million People in Need  
(Projected Period: June – September 2022 - Population in Phase 3-5)

3 North-East States

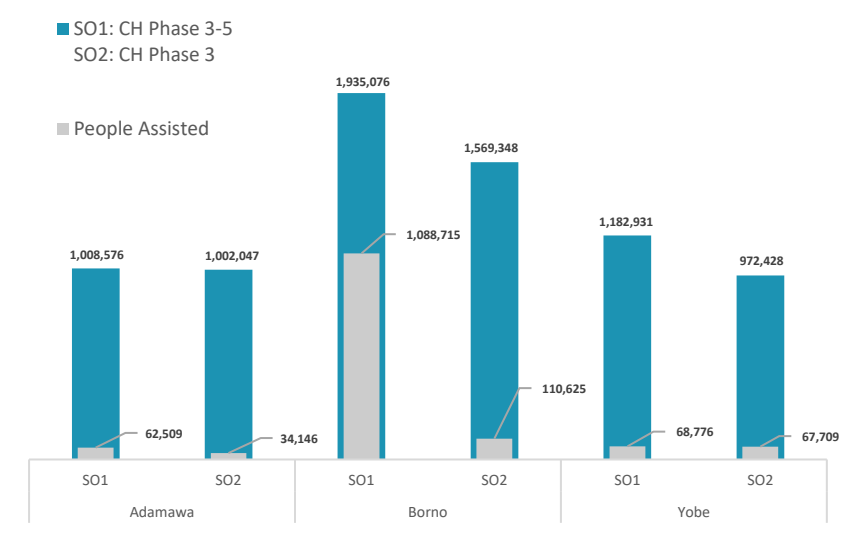
**FUNDING REQUIRED – 2022 HRP**

**451\*** MILLION

\$XXXM Unmet  
\$XXM Resourced

Data Source: OCHA Financial Tracking System (FTS) (as of 28<sup>th</sup> February 2021)

**INTERVENTION BY STATE – SO1 & SO2**



**SAFE ACCESS TO FUEL & ENERGY**

**SAFE**  
SAFE ACCESS TO FUEL AND ENERGY

supported with fuel efficient stoves, use/production of alternative energy, production of fuel-efficient stoves, and SAFE & protection awareness raising outreach

**FOOD SECURITY OBJECTIVE 1: Food Assistance**

**SO1 - Improve the most vulnerable crisis-affected people's access to timely and appropriate food assistance to meet their immediate food needs**

**4.1M targeted**  
Population in Phase 3-5 (March 2022 Cadre Harmonisé for Projected Period: June – September 2022)

**30%** Target Reached (calculated on a monthly basis)

**1.2 M assisted**  
Number of people assisted in January 2022 under SO1 (In-Kind and Cash/Voucher)

**256,322** people assisted with In-Kind

**963,678** people assisted with Cash/Voucher

**26** Number of Partners who reported Food Assistance interventions in January 2022 including implementing partners

**FOOD SECURITY OBJECTIVE 2: Agriculture and Livelihoods**

**SO2 - Strengthen resilience of crisis-affected people by re-establishing, improving and diversifying key agriculture livelihoods**

**3.0M targeted**  
Population in Phase 3 (March 2022 Cadre Harmonisé for Projected Period: June – September 2022)

**6%** Target Reached (calculated on a yearly basis)

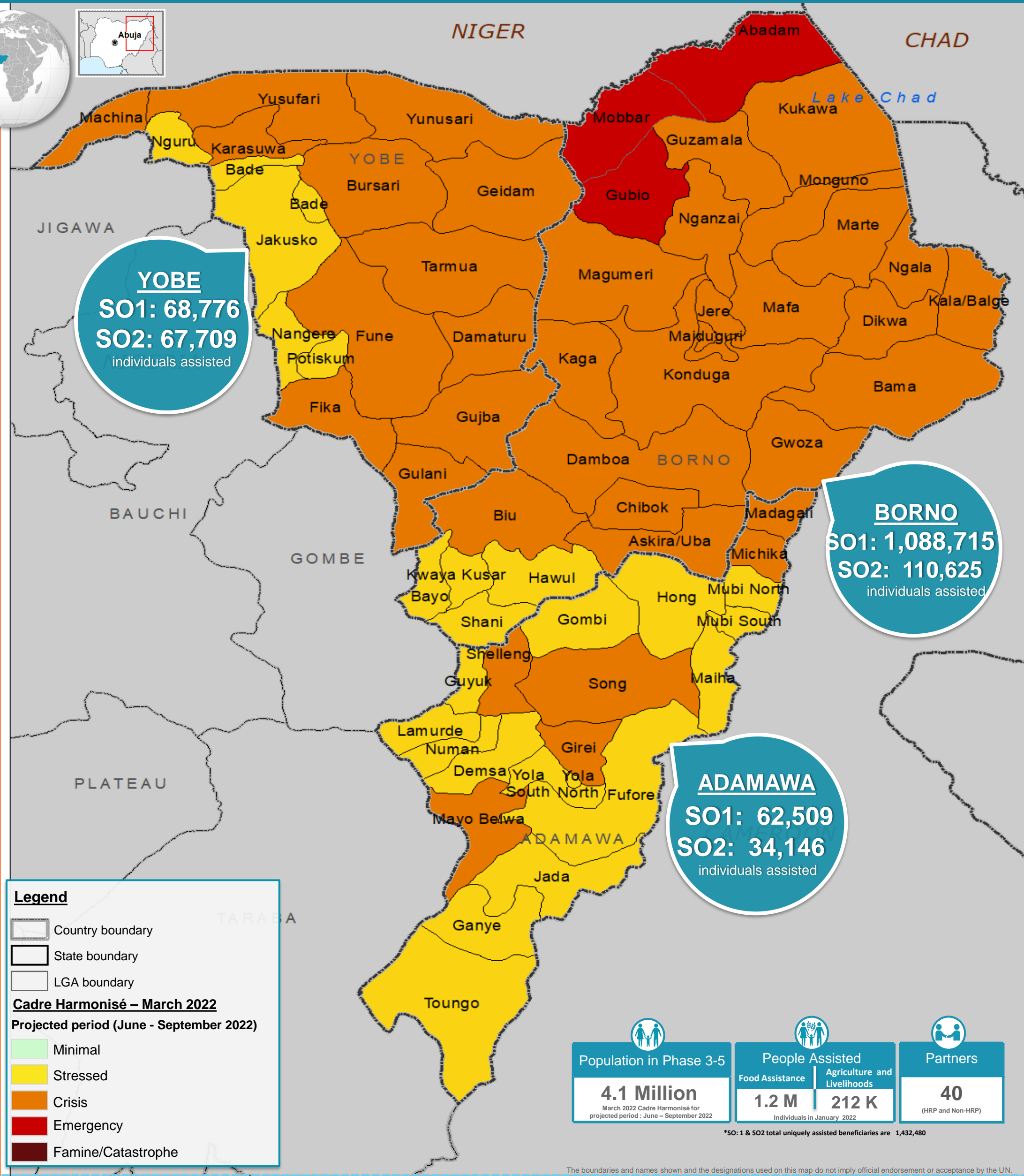
**212 K assisted**  
Number of people assisted in January 2022 under SO2 (In-Kind and Cash/Voucher)

**209,085** people assisted with In-Kind

**3,395** people assisted with Cash/Voucher

**17** Number of Partners who reported Agriculture and Livelihoods interventions in January 2022 including implementing partners

**MARCH 2022 CADRE HARMONISÉ ANALYSIS-PROJECTED PERIOD (June – September 2022)**



**Legend**

- Country boundary
- State boundary
- LGA boundary

**Cadre Harmonisé – March 2022**  
Projected period (June - September 2022)

- Minimal
- Stressed
- Crisis
- Emergency
- Famine/Catastrophe

**Population in Phase 3-5**  
4.1 Million  
March 2022 Cadre Harmonisé for projected period: June – September 2022

**People Assisted**  
Food Assistance: 1.2 M  
Agriculture and Livelihoods: 212 K  
Individuals in January 2022

**Partners**  
40  
(HRP and Non-HRP)

\*SO1 & SO2 total uniquely assisted beneficiaries are 1,432,480

The boundaries and names shown and the designations used on this map do not imply official endorsement or acceptance by the UN.