

PEOPLE TARGETED – 2021 HRP

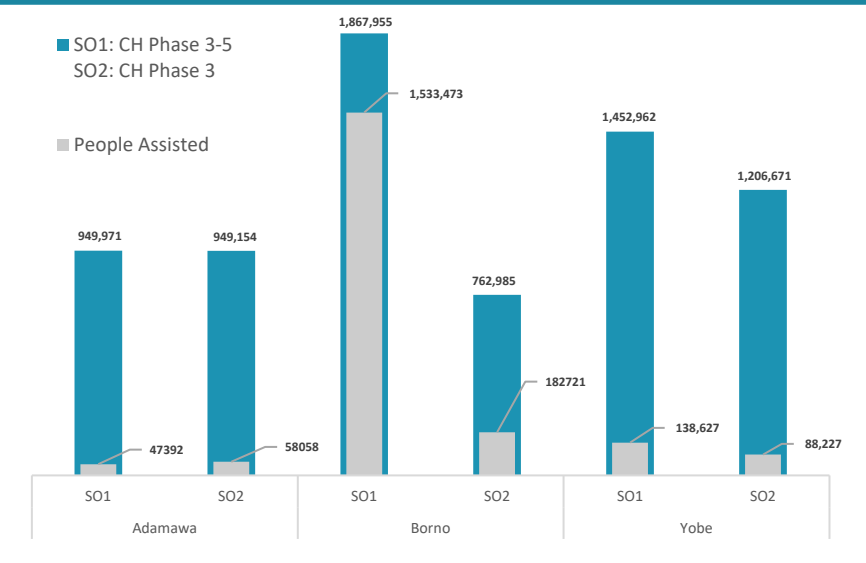
5.1 Million People in Need
(October Period: June – August 2021 - Population in Phase 3-5)
3 North-East States

FUNDING REQUIRED – 2021 HRP

354* MILLION
\$315M (89%) Unmet
\$39M (11%) Resourced

Data Source: OCHA Financial Tracking System (FTS) (as of 25 March 2021)

INTERVENTION BY STATE – SO1 & SO2



SAFE ACCESS TO FUEL & ENERGY

SAFE SAFE ACCESS TO FUEL AND ENERGY
143 HHs supported with fuel efficient stoves, use/production of alternative energy, production of fuel-efficient stoves, and SAFE & protection awareness raising outreach
1,050 beneficiaries were assisted with Fuel efficient stoves were distributed in Bama LGA, Borno State

FOOD SECURITY OBJECTIVE 1: Food Assistance

SO1 - Improve the most vulnerable crisis-affected people's access to timely and appropriate food assistance to meet their immediate food needs

4.3M targeted (Population in Phase 3-5 (October 2020 Cadre Harmonisé for current period: June – August 2021))
1.7M assisted (Number of people assisted in February 2021 under SO1 (In-Kind and Cash/Voucher))

644,471 people assisted with In-Kind
1,075,021 people assisted with Cash/Voucher

27 Number of Partners who reported Food Assistance interventions in February 2021 including implementing partners

40% Target Reached (calculated on a monthly basis) (60% Gap)

FOOD SECURITY OBJECTIVE 2: Agriculture and Livelihoods

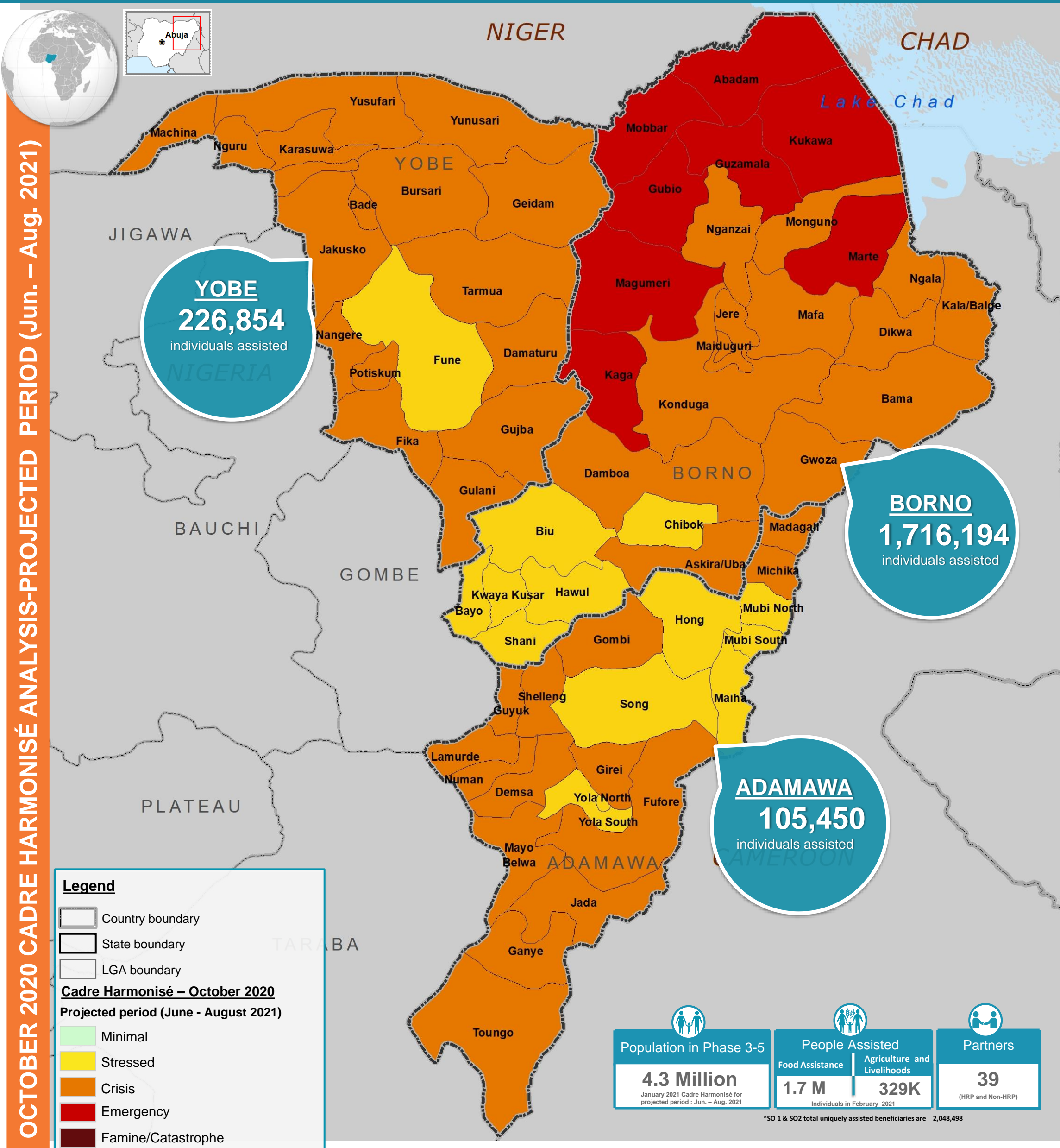
SO2 - Strengthen resilience of crisis-affected people by re-establishing, improving and diversifying key agriculture livelihoods

2.9M targeted (Population in Phase 3 (October 2020 Cadre Harmonisé for current period: June - August 2020))
329k assisted (Number of people assisted in February 2021 under SO2 (In-Kind and Cash/Voucher))

296,252 people assisted with In-Kind
32,754 people assisted with Cash/Voucher

23 Number of Partners who reported Agriculture and Livelihoods interventions in February 2021 including implementing partners

9% Target Reached (calculated on a yearly basis) (91% Gap)



OCTOBER 2020 CADRE HARMONISÉ ANALYSIS-PROJECTED PERIOD (Jun. – Aug. 2021)

Population in Phase 3-5	People Assisted	Partners
4.3 Million <small>January 2021 Cadre Harmonisé for projected period: Jun. – Aug. 2021</small>	1.7 M <small>Individuals in February 2021</small>	39 <small>(HRP and Non-HRP)</small>

*SO 1 & SO2 total uniquely assisted beneficiaries are 2,048,498

The boundaries and names shown and the designations used on this map do not imply official endorsement or acceptance by the UN.