

PEOPLE TARGETED – 2022 HRP

4.3 Million People in Need
(Projected Period: June – August 2023 - Population in Phase 3-5)

3 North-East States

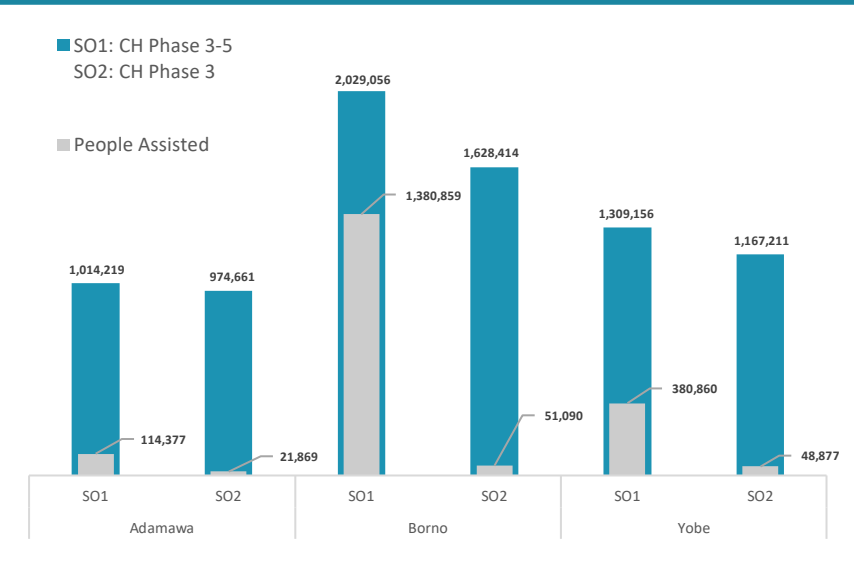
FUNDING REQUIRED – 2023 HRP

470* MILLION

\$XXM Unmet
\$XXM Resourced

Data Source: FSS Partners

INTERVENTION BY STATE – SO1 & SO2



SAFE ACCESS TO FUEL & ENERGY

SAFE SAFE ACCESS TO FUEL AND ENERGY

supported with fuel efficient stoves, use/production of alternative energy, production of fuel-efficient stoves, and SAFE & protection awareness raising outreach

NOTE: There were no SAFE activity for the month of April 2023

FOOD SECURITY OBJECTIVE 1: Food Assistance

SO1 - Improve the most vulnerable crisis-affected people's access to timely and appropriate food assistance to meet their immediate food needs

4.3 M targeted
Population in Phase 3-5 (October 2022 Cadre Harmonisé for Projected Period: June – August 2023)

1.9 M assisted
Number of people assisted under SO1 (In-Kind and Cash/Voucher)

44% Target Reached (calculated on a monthly basis) | 66% (Gap)

582,768 people assisted with In-Kind

1,293,328 people assisted with Cash/Voucher

22 Number of Partners who reported Food Assistance interventions including implementing partners

FOOD SECURITY OBJECTIVE 2: Agriculture and Livelihoods

SO2 - Strengthen resilience of crisis-affected people by re-establishing, improving and diversifying key agriculture livelihoods

3.7M targeted
Population in Phase 3 (October 2022 Cadre Harmonisé for Projected Period: June – August 2023)

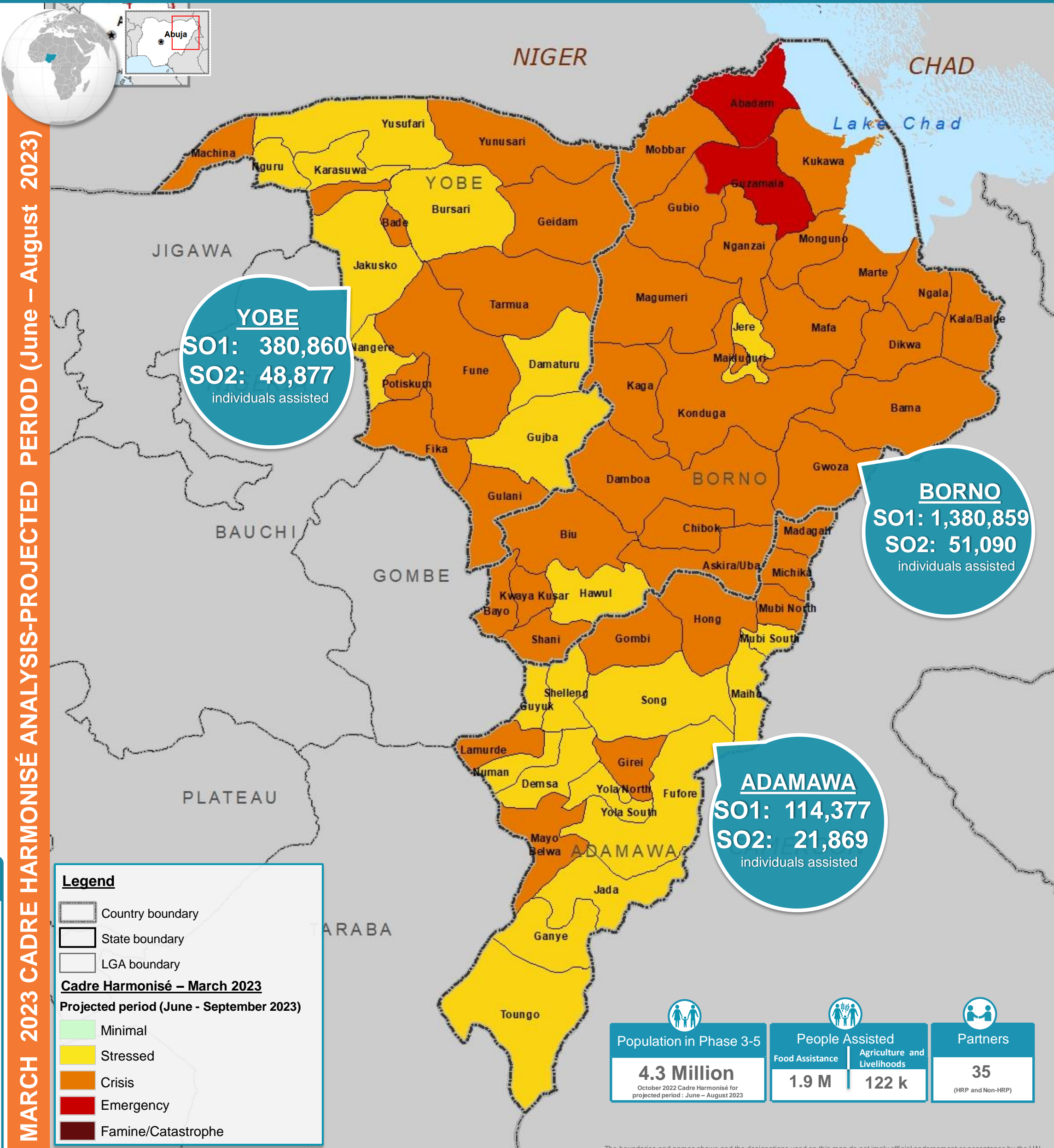
122 k assisted
Number of people assisted under SO2 (In-Kind and Cash/Voucher)

3% Target Reached (calculated on a yearly basis) | 97% (Gap)

85,389 people assisted with In-Kind

36,117 people assisted with Cash/Voucher

24 Number of Partners who reported Agriculture and Livelihoods interventions including implementing partners



MARCH 2023 CADRE HARMONISÉ ANALYSIS-PROJECTED PERIOD (June – August 2023)

Legend

- Country boundary
- State boundary
- LGA boundary

Cadre Harmonisé – March 2023
Projected period (June - September 2023)

- Minimal
- Stressed
- Crisis
- Emergency
- Famine/Catastrophe

Population in Phase 3-5 4.3 Million <small>October 2022 Cadre Harmonisé for projected period: June – August 2023</small>	People Assisted Food Assistance 1.9 M	Agriculture and Livelihoods 122 k	Partners 35 <small>(HRP and Non-HRP)</small>
---	--	---	---