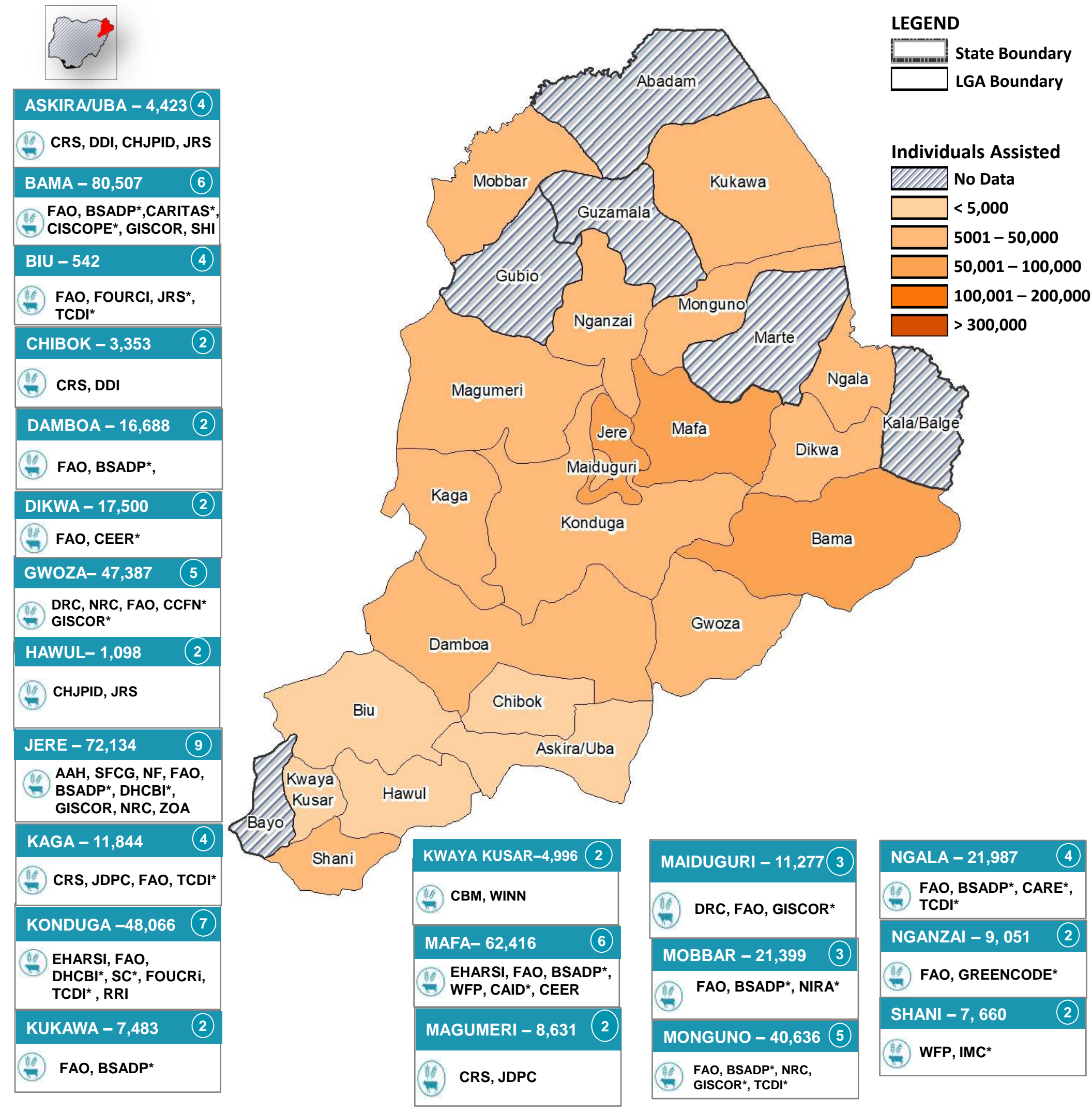
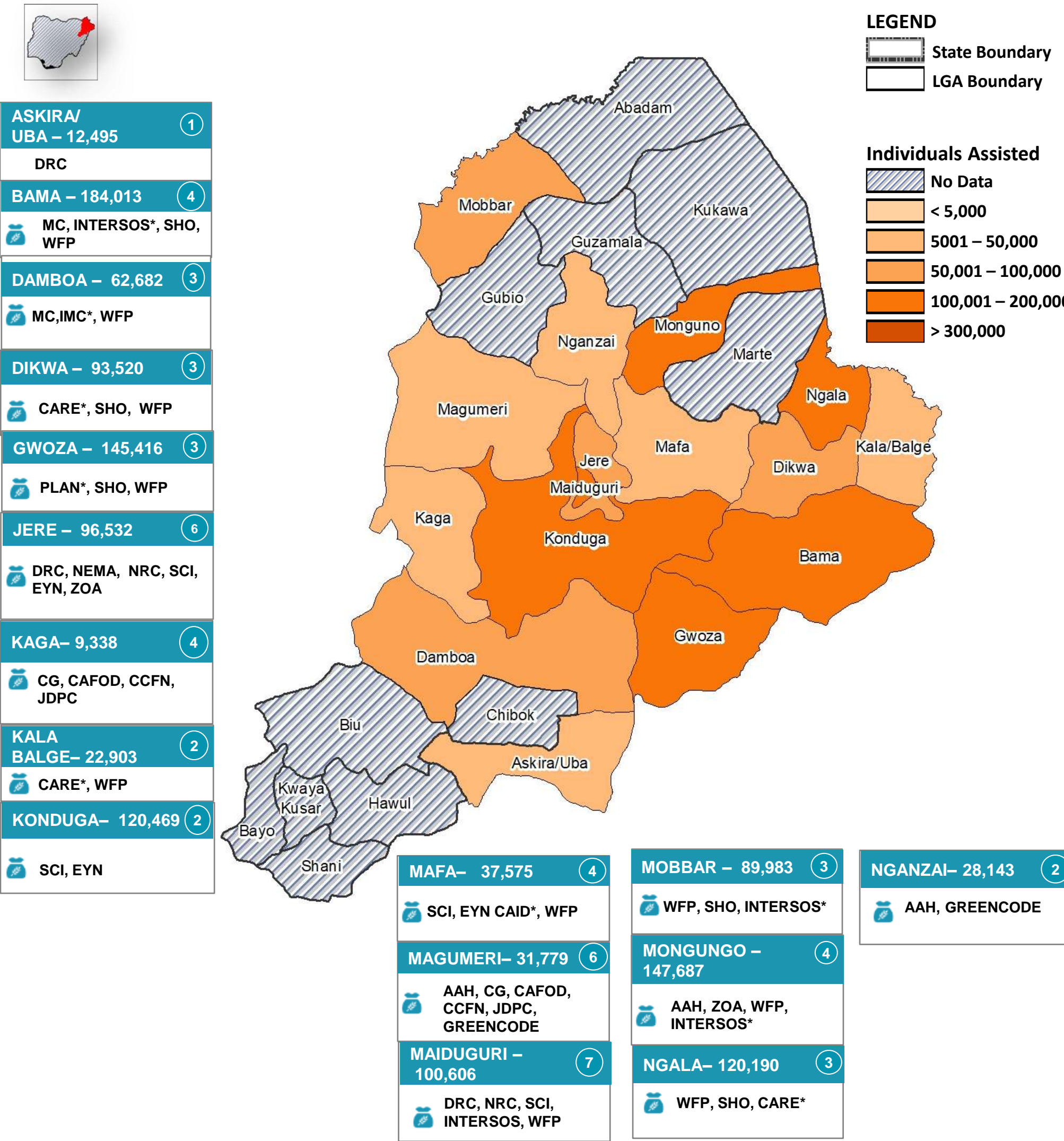


SO1 - FOOD ASSISTANCE

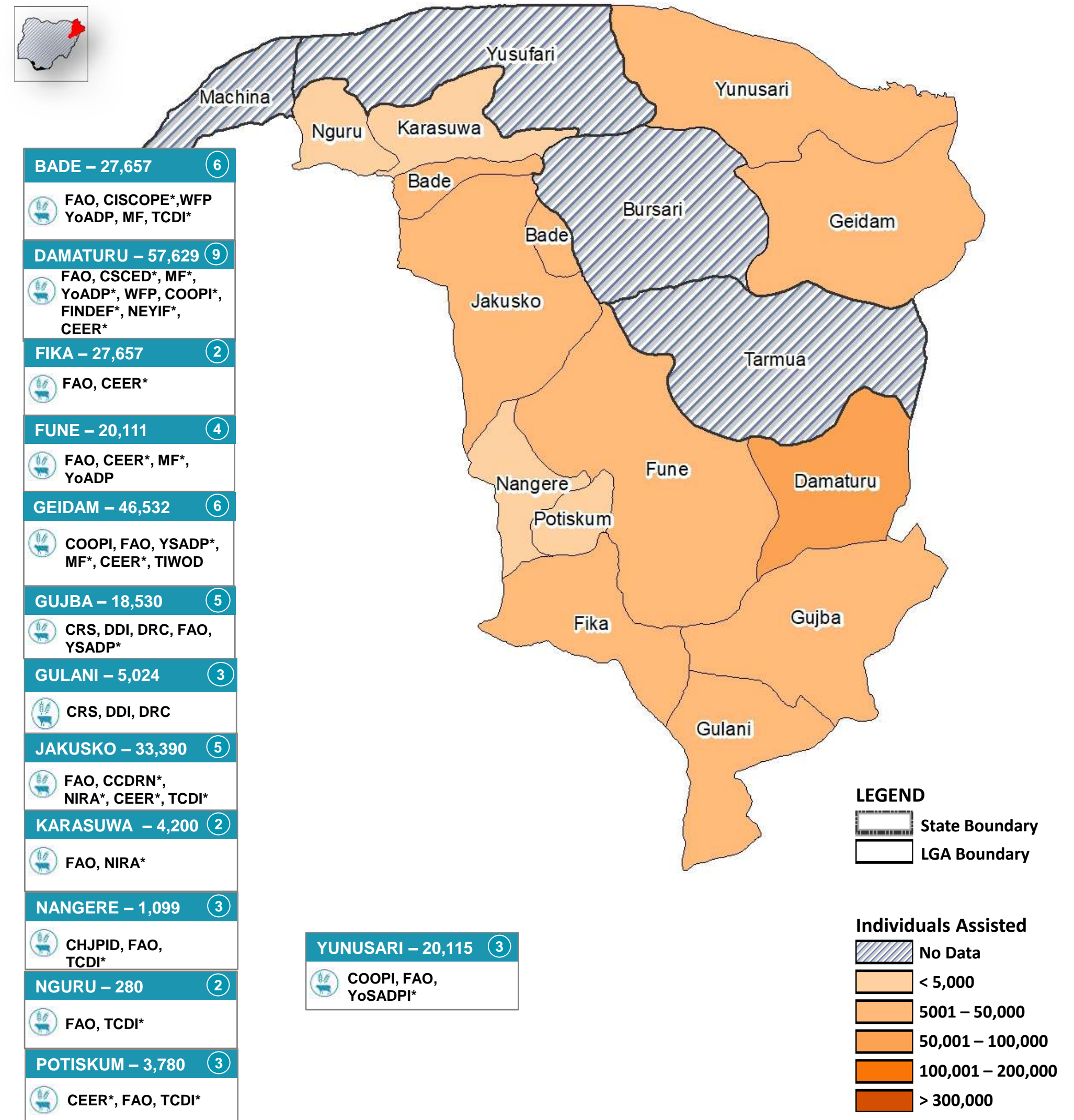
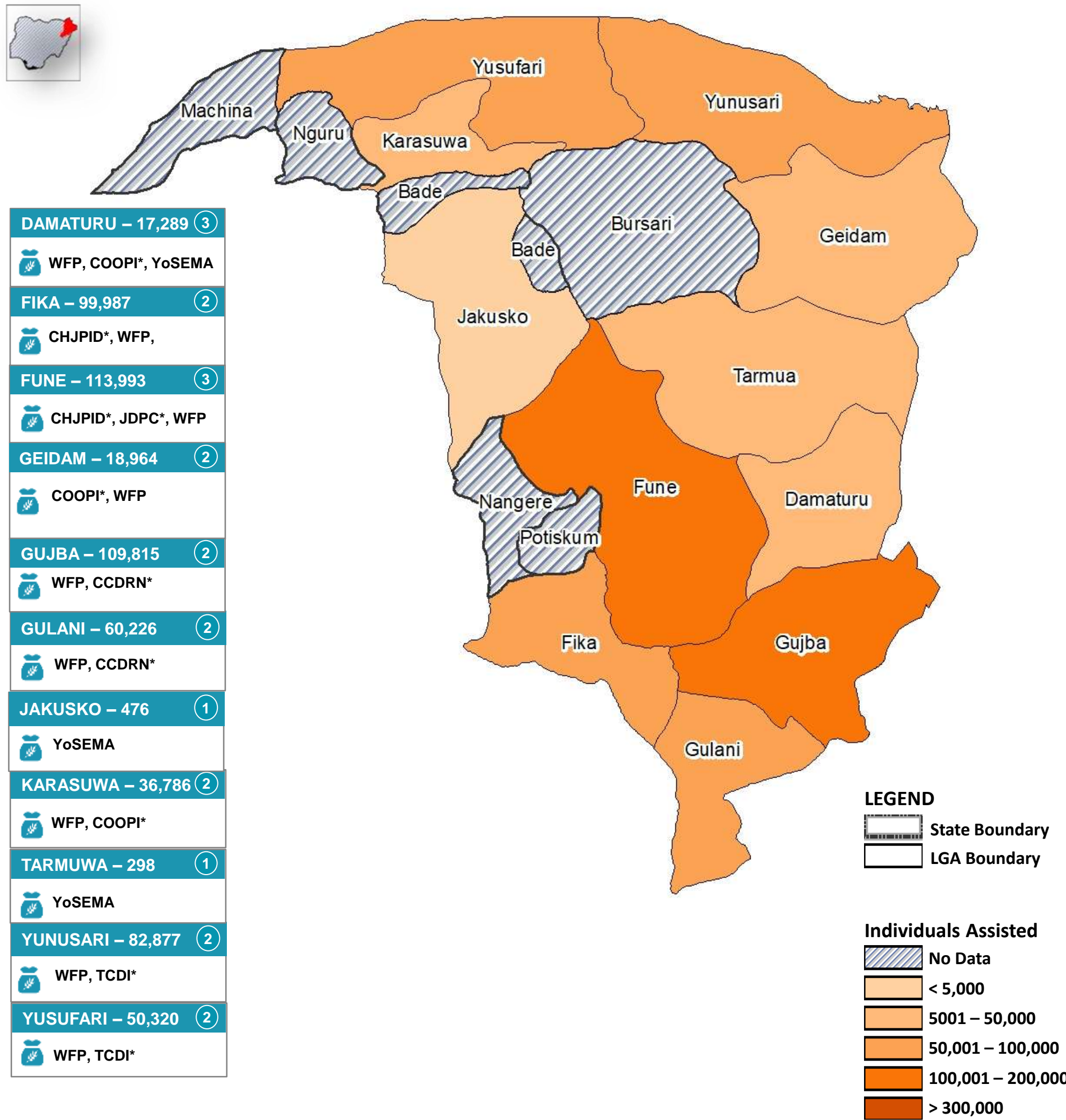
SO2 - AGRICULTURE & LIVELIHOODS



SO1 PARTNERS 20	SO2 PARTNERS 27	SO1 - ASSISTED 1.3M	TOTAL POPULATION ASSISTED IN BORNO STATE *1.8M	SO2 - CUMULATIVELY ASSISTED 500K	In-Kind 202K	SO1 202K	SO2 445	MODALITY
					Cash/Vouchers 1.1M		55k	

SO1 - FOOD ASSISTANCE

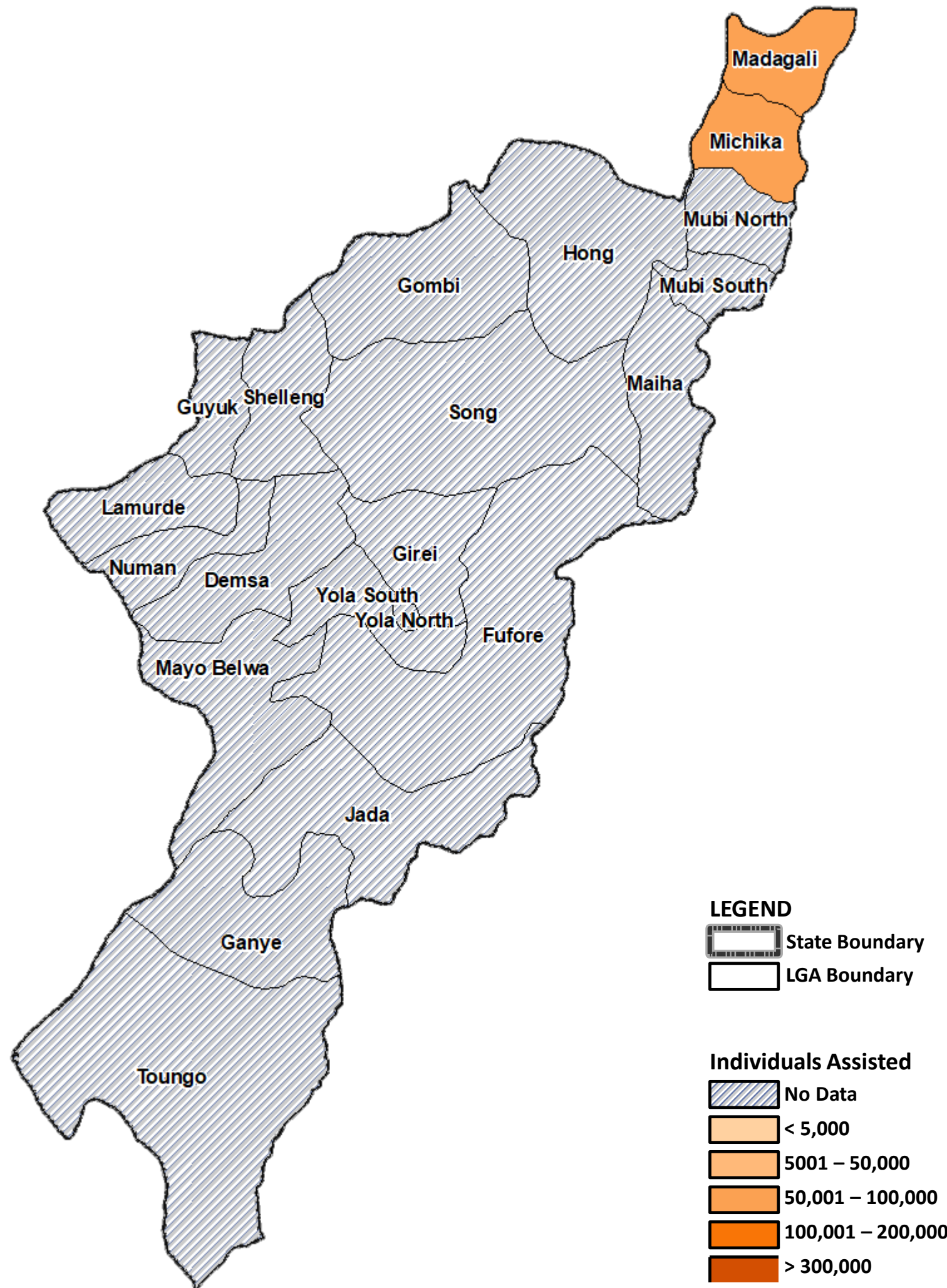
SO2 - AGRICULTURE & LIVELIHOODS



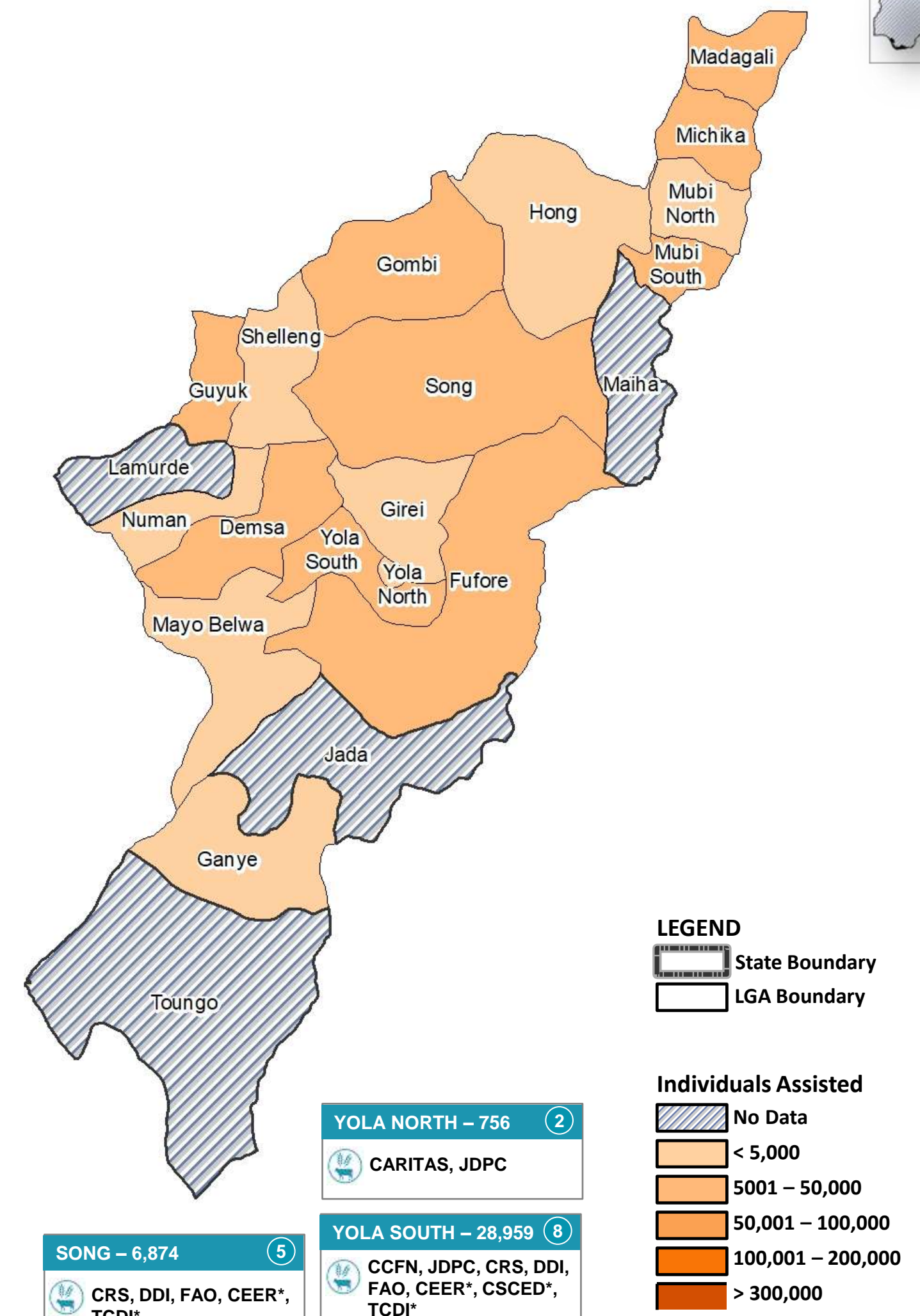
SO1 PARTNERS	SO2 PARTNERS	SO1 - ASSISTED	TOTAL POPULATION ASSISTED IN YOBE STATE	SO2 - CUMULATIVELY ASSISTED	In-Kind	SO1	SO2	MODALITY
8	2 Partners with both SO1&2 activities	17	*905k	265K	Cash/Vouchers	287K	228K	
						353K	37k	

SO1 - FOOD ASSISTANCE

SO2 - AGRICULTURE & LIVELIHOODS



DEMSA – 8,050 (3)	FAO, CISCOPE*, CSCED*
FURORE – 33,116 (6)	FAO, CSCED*, CEER*, HARAF, IRC, TCDI*
GANYE – 3,540 (3)	CEPFoWY, FAO, CISCOPE*
GIREI – 12,707 (6)	CRS, DDI, JRS, CEER*, CSCED*, FAO
GOMBI – 3,043 (3)	FAO, TCDI*, IOM
GUYUK – 5,600 (2)	FAO, CEER
HONG – 889 (1)	CHJPID
MADAGALI – 26,478 (5)	CARITAS, JDPC, FAO, CSCED*, CISCOPE*, JRS
MAYO-BELWA – 2,800 (2)	FAO, CEER*
MICHIKA – 43,273 (11)	CRS, CCFN, CBM, JDPC, DRC, CHJPID, CSCED*, JPRM, FAO, CCDRN*, JRS
MUBI NORTH – 3,864 (4)	CARITAS, FAO, JDPC, TCDI*
MUBI SOUTH – 8,024 (3)	CCFN, NRC, JDPC
NUMAN – 1,400 (2)	FAO, CSCED*
SHELLENG – 3,213 (2)	CRS, DDI



YOLA NORTH – 756 (2)	CARITAS, JDPC
YOLA SOUTH – 28,959 (8)	CCFN, JDPC, CRS, DDI, FAO, CEER*, CSCED*, TCDI*

SO1 PARTNERS	SO2 PARTNERS	SO1 - ASSISTED	TOTAL POPULATION ASSISTED IN ADAMAWA STATE	SO2 - CUMULATIVELY ASSISTED	SO1	SO2	MODALITY
3	20	126K	*318K	192K	In-Kind 114K	175K	
Partners with both SO1&2 activities					Cash/Vouchers 12k	17K	