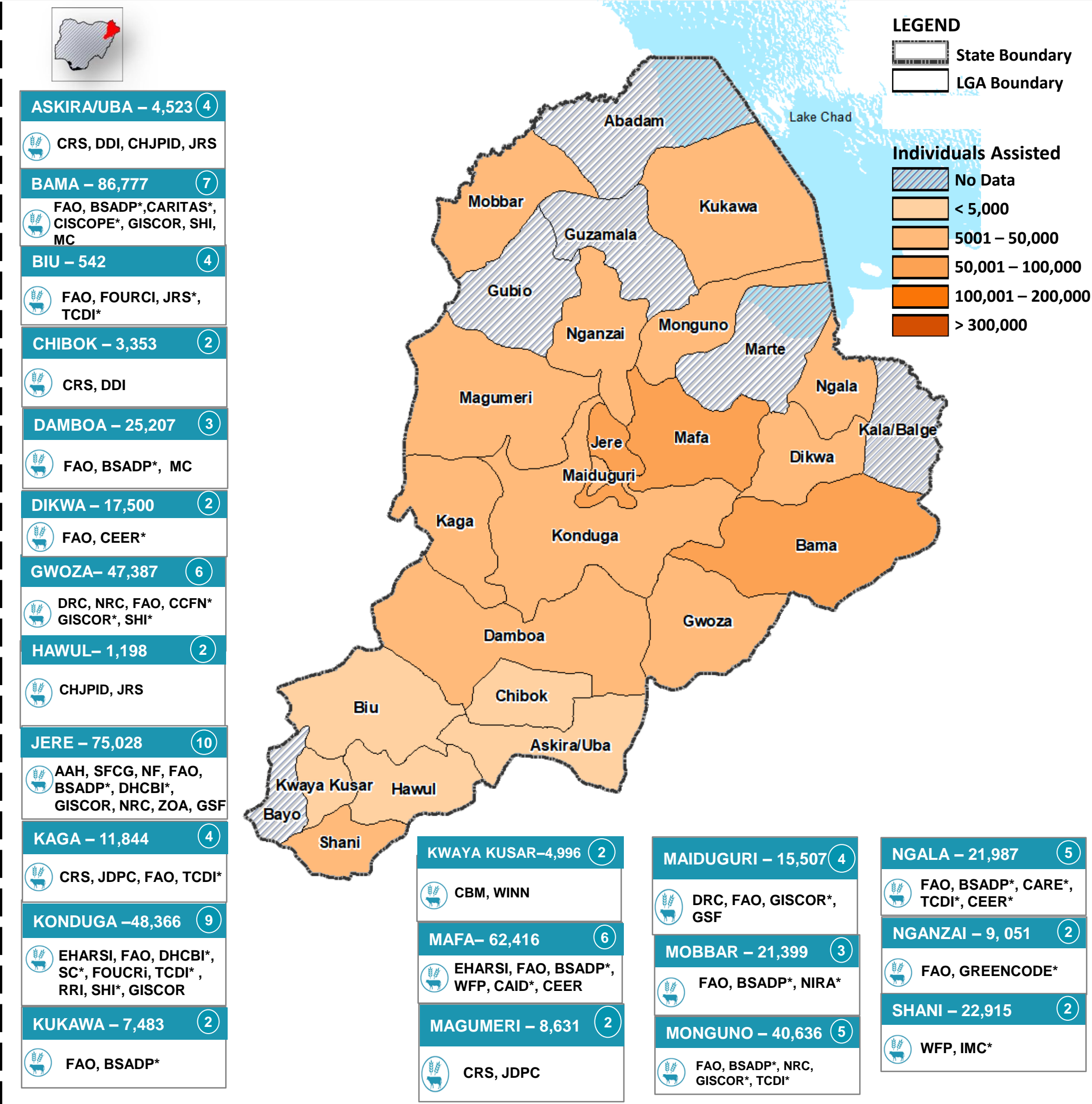
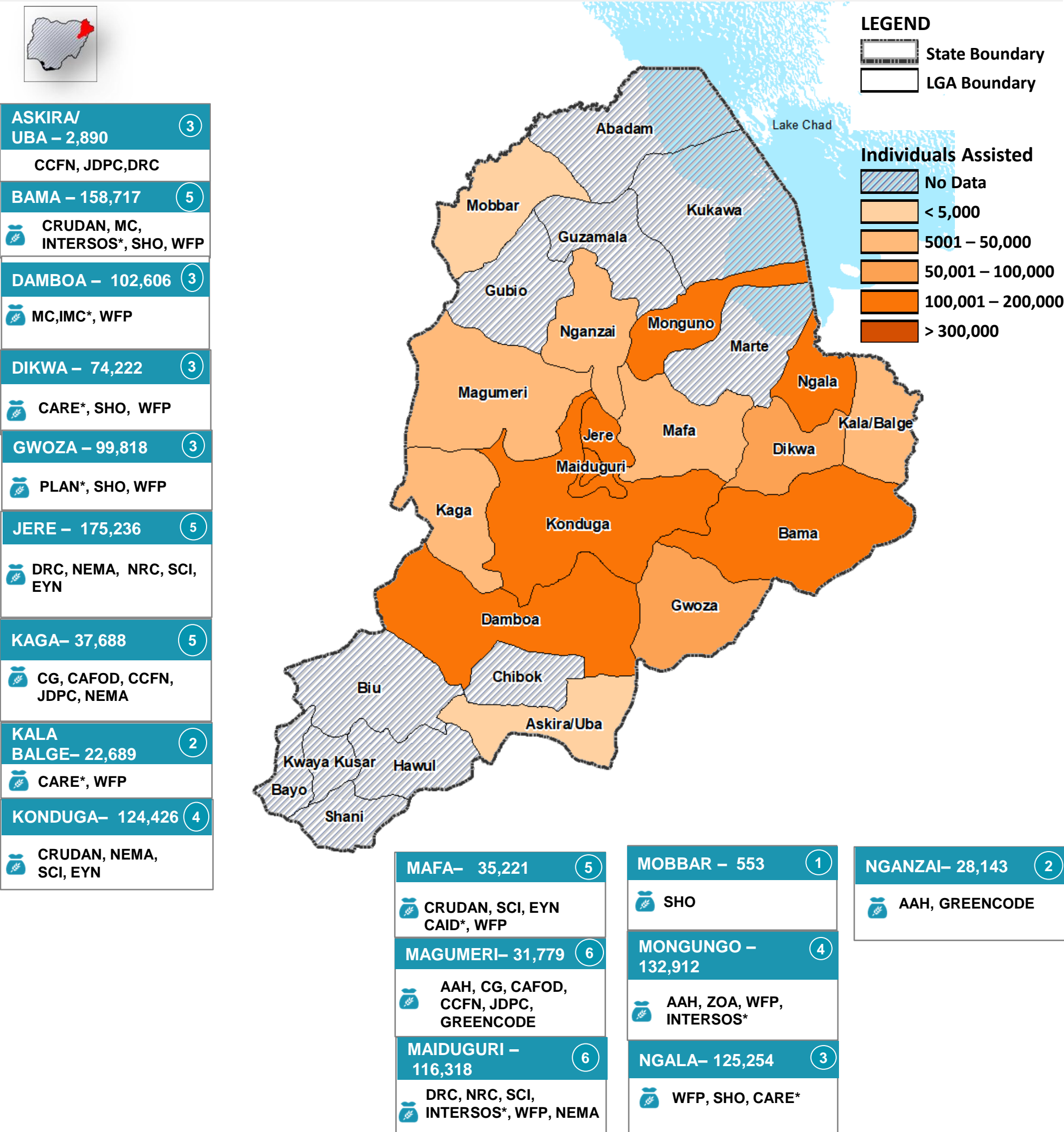


SO1 - FOOD ASSISTANCE

SO2 - AGRICULTURE & LIVELIHOODS



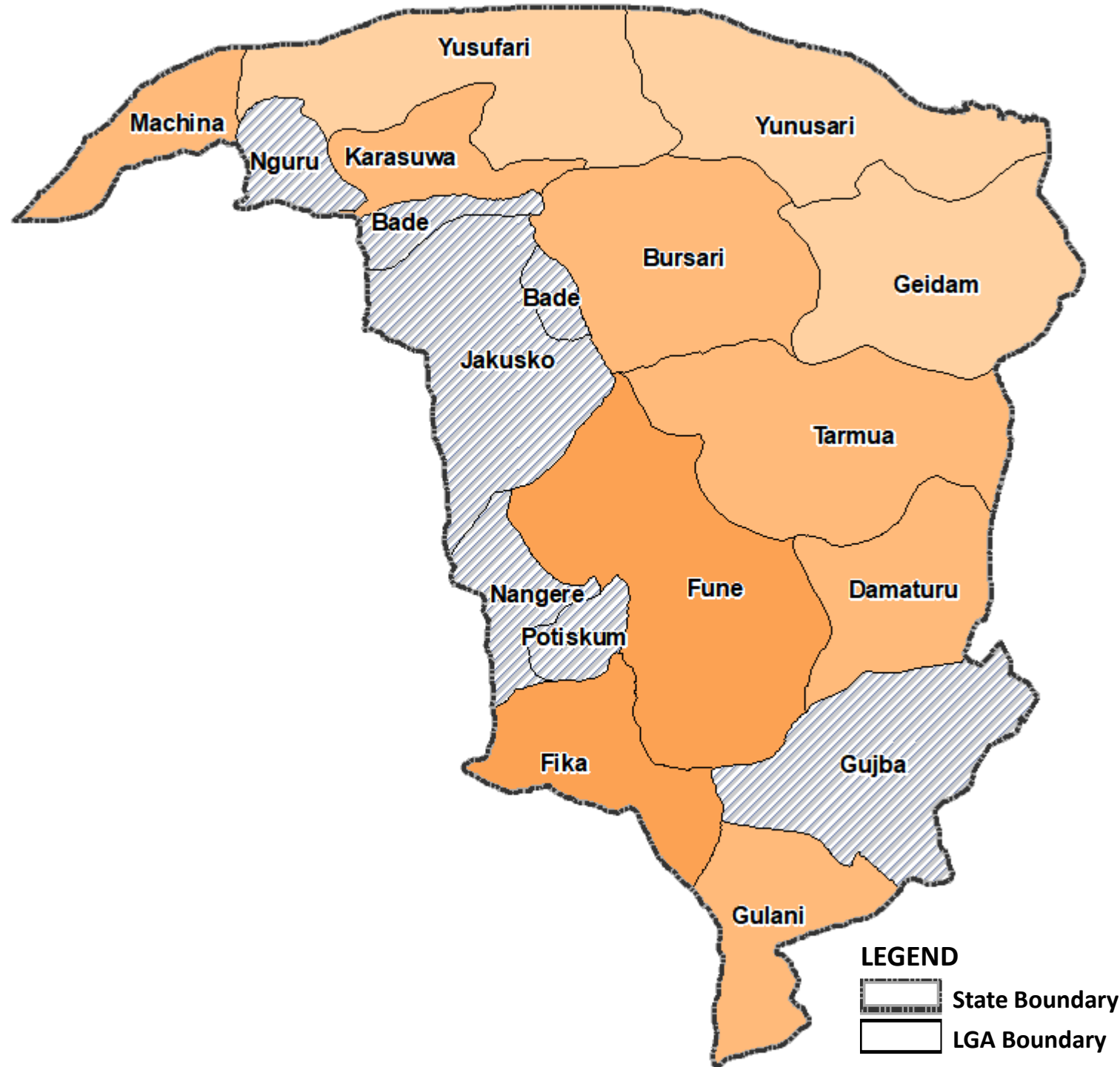
SO1 PARTNERS 21	SO2 PARTNERS 34	SO1 - ASSISTED 1.3M	TOTAL POPULATION ASSISTED IN BORNO STATE *1.8M	SO2 - CUMULATIVELY ASSISTED 537K	SO1 179K In-Kind	SO2 453 In-Kind	MODALITY
					1.1M Cash/Vouchers	84k Cash/Vouchers	

SO1 - FOOD ASSISTANCE

SO2 - AGRICULTURE & LIVELIHOODS



BURSARI – 44,655 (2)
WFP, FINDEF*
DAMATURU – 16,720 (3)
WFP, COOPI*
FIKA – 75,475 (3)
AAH, CHJPID*, WFP,
FUNE – 70,536 (3)
CHJPID*, WFP
GEIDAM – 1,000 (1)
JDF
GULANI – 26,985 (2)
WFP, CCDRN*
KARASUWA – 23,688 (2)
COOPI*, WFP
MACHINA – 39,876 (3)
AAH, WFP, COOPI*
TARMUWA – 41,272 (3)
JDF, FINDEF*, WFP
YUNUSARI – 1,000 (1)
JDF
YUSUFARI – 1,000 (1)
JDF



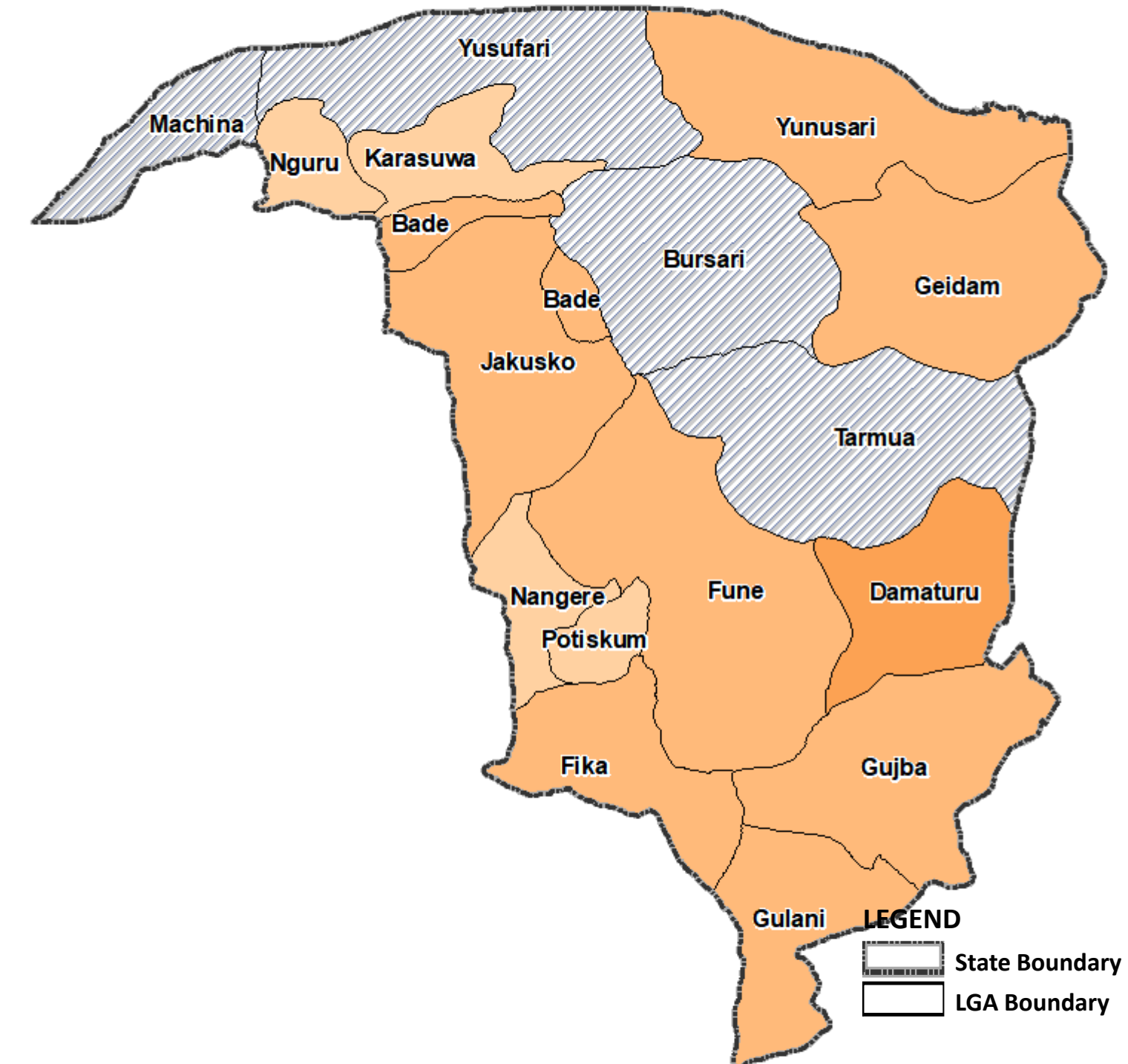
LEGEND

State Boundary
LGA Boundary

Individuals Assisted

- No Data
- < 5,000
- 5001 – 50,000
- 50,001 – 100,000
- 100,001 – 200,000
- > 300,000

BADE – 38,358 (7)
FAO, CISCOPE*, CCDRN*, WFP YoADP, MF, TCDI*
DAMATURU – 61,154 (10)
FAO, CSCED*, MF*, YoADP*, WFP, COOPI*, FINDEF*, NEYIF*, CEER*, GSF
FIKA – 27,657 (2)
FAO, CEER*
FUNE – 20,111 (4)
FAO, CEER*, MF*, YoADP
GEIDAM – 46,532 (6)
COOPI, FAO, YSADP*, MF*, CEER*, TIWOD
GUJBA – 18,530 (5)
CRS, DDI, DRC, FAO, YSADP*
GULANI – 5,024 (3)
CRS, DDI, DRC
JAKUSKO – 33,390 (5)
FAO, CCDRN*, NIRA*, CEER*, TCDI*
KARASUWA – 4,200 (2)
FAO, NIRA*
NANGERE – 1,099 (3)
CHJPID, FAO, TCDI*
NGURU – 280 (2)
FAO, TCDI*
POTISKUM – 3,780 (3)
CEER*, FAO, TCDI*



LEGEND

State Boundary
LGA Boundary

Individuals Assisted

- No Data
- < 5,000
- 5001 – 50,000
- 50,001 – 100,000
- 100,001 – 200,000
- > 300,000

YUNUSARI – 20,115 (3)
COOPI, FAO, YoSADPI*

SO1 PARTNERS 7

SO2 PARTNERS 19

3 Partners with both SO1&2 activities

SO1 - ASSISTED 342K

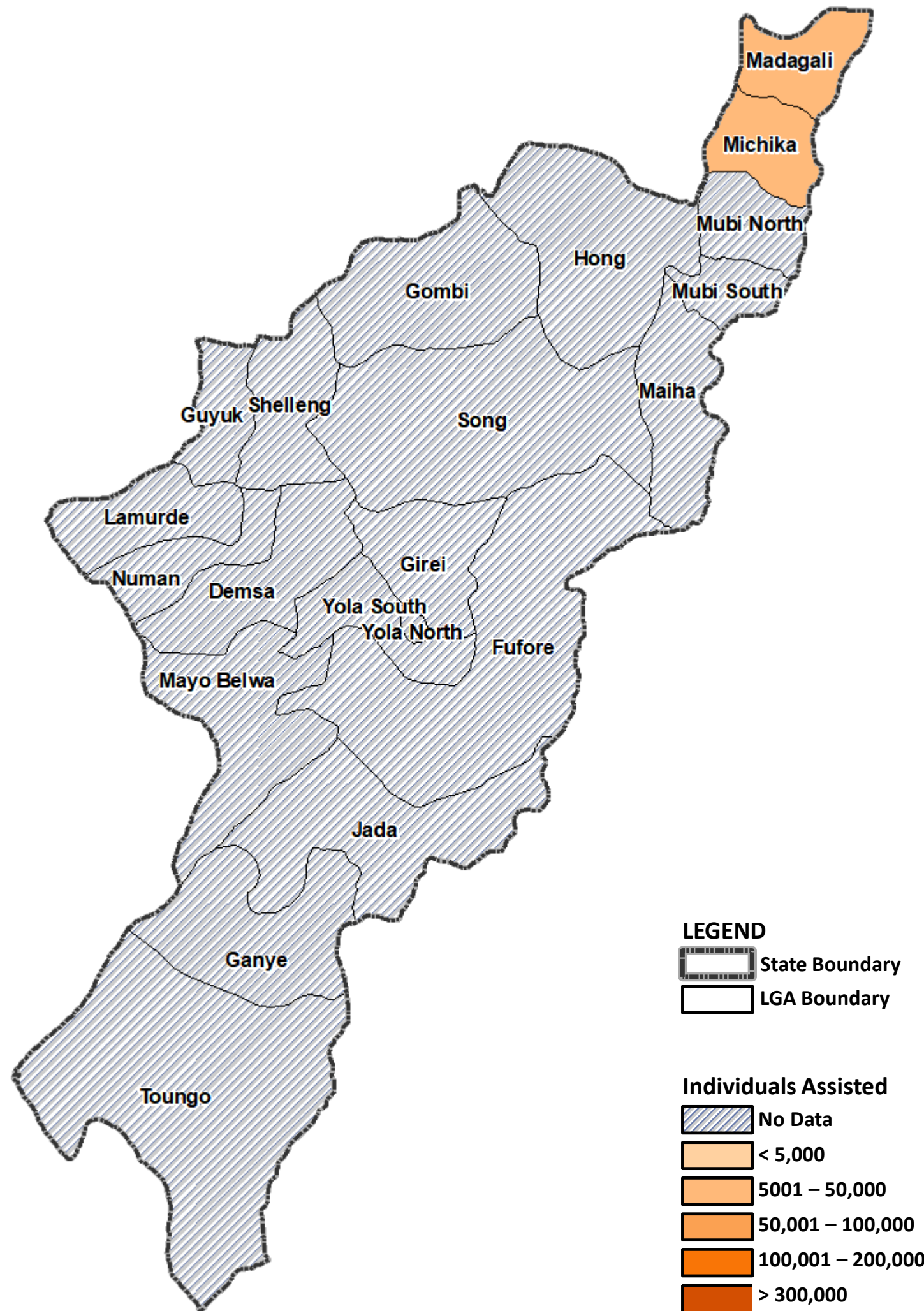
TOTAL POPULATION ASSISTED IN YOBE STATE *622k

SO2 - CUMULATIVELY ASSISTED 280K

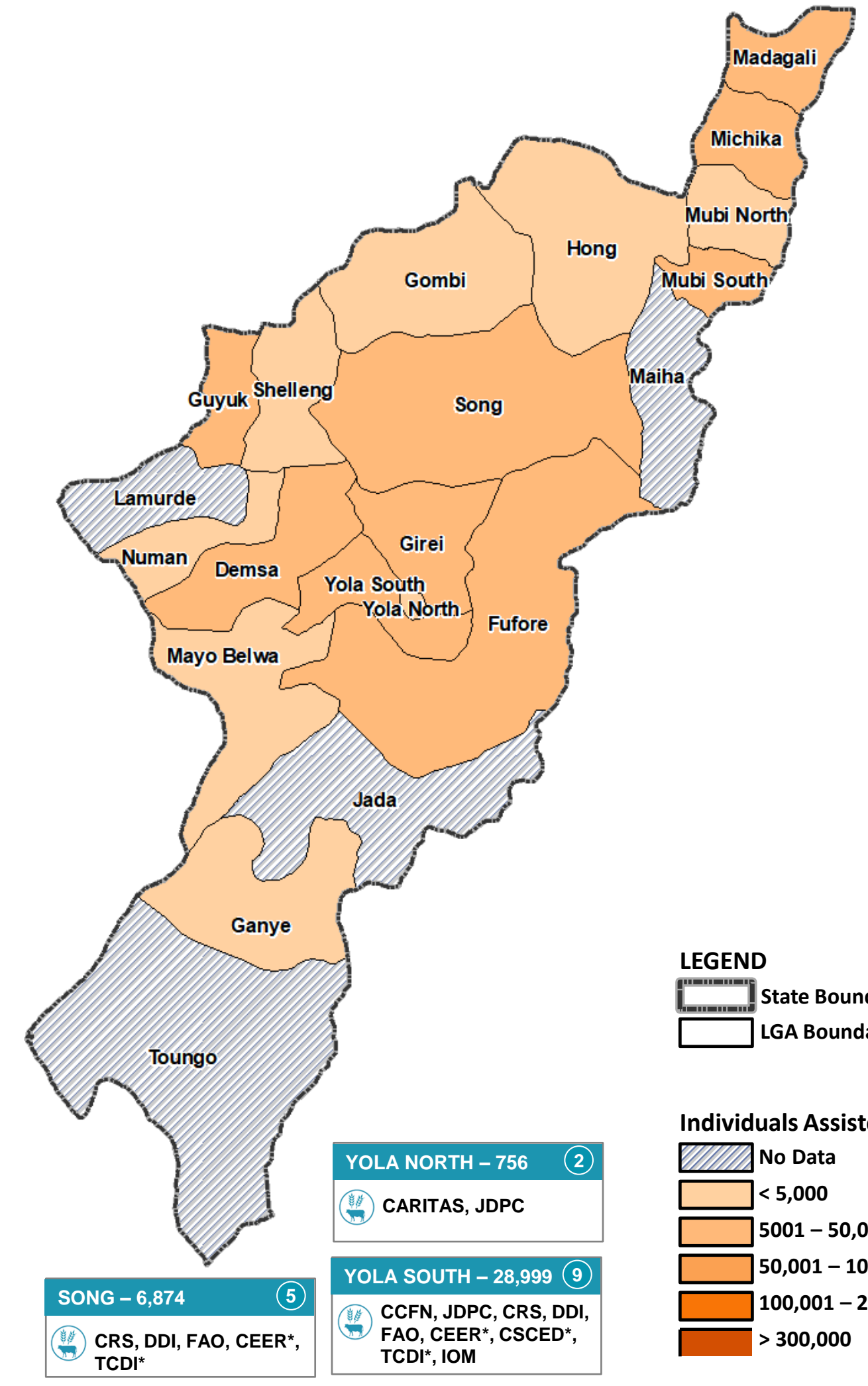
	SO1	SO2
In-Kind	308K	229K
Cash/Vouchers	34K	51k

SO1 - FOOD ASSISTANCE

SO2 - AGRICULTURE & LIVELIHOODS



DEMSA – 8,050	3	FAO, CISCOPE*, CSCED*
FURORE – 33,116	6	FAO, CSCED*, CEER*, HARAF, IRC, TCDI*
GANYE – 3,540	3	CEPFoWY, FAO, CISCOPE*
GIREI – 12,707	6	CRS, DDI, JRS, CEER*, CSCED*, FAO
GOMBI – 3,043	3	FAO, TCDI*, IOM
GUYUK – 5,600	2	FAO, CEER
HONG – 889	1	CHJPID
MADAGALI – 26,478	5	CARITAS, JDPC, FAO, CSCED*, CISCOPE*, JRS
MAYO-BELWA – 2,800	2	FAO, CEER*
MICHIKA – 43,373	11	CRS, CCFN, CBM, JDPC, DRC, CHJPID, CSCED*, JPRM, FAO, CCDRN*, JRS
MUBI NORTH – 3,913	5	CCFN, FAO, GSF, JDPC, TCDI*
MUBI SOUTH – 8,022	4	CCFN, NRC, GSF, JDPC
NUMAN – 1,400	2	FAO, CSCED*
SHELLENG – 3,213	2	CRS, DDI



SO1 PARTNERS	SO2 PARTNERS	SO1 - ASSISTED	TOTAL POPULATION ASSISTED IN ADAMAWA STATE	SO2 - CUMULATIVELY ASSISTED	SO1	SO2	MODALITY
5	3 Partners with both SO1&2 activities	20	*268K	193K	In-Kind	68K	
					Cash/Vouchers	7k	17K