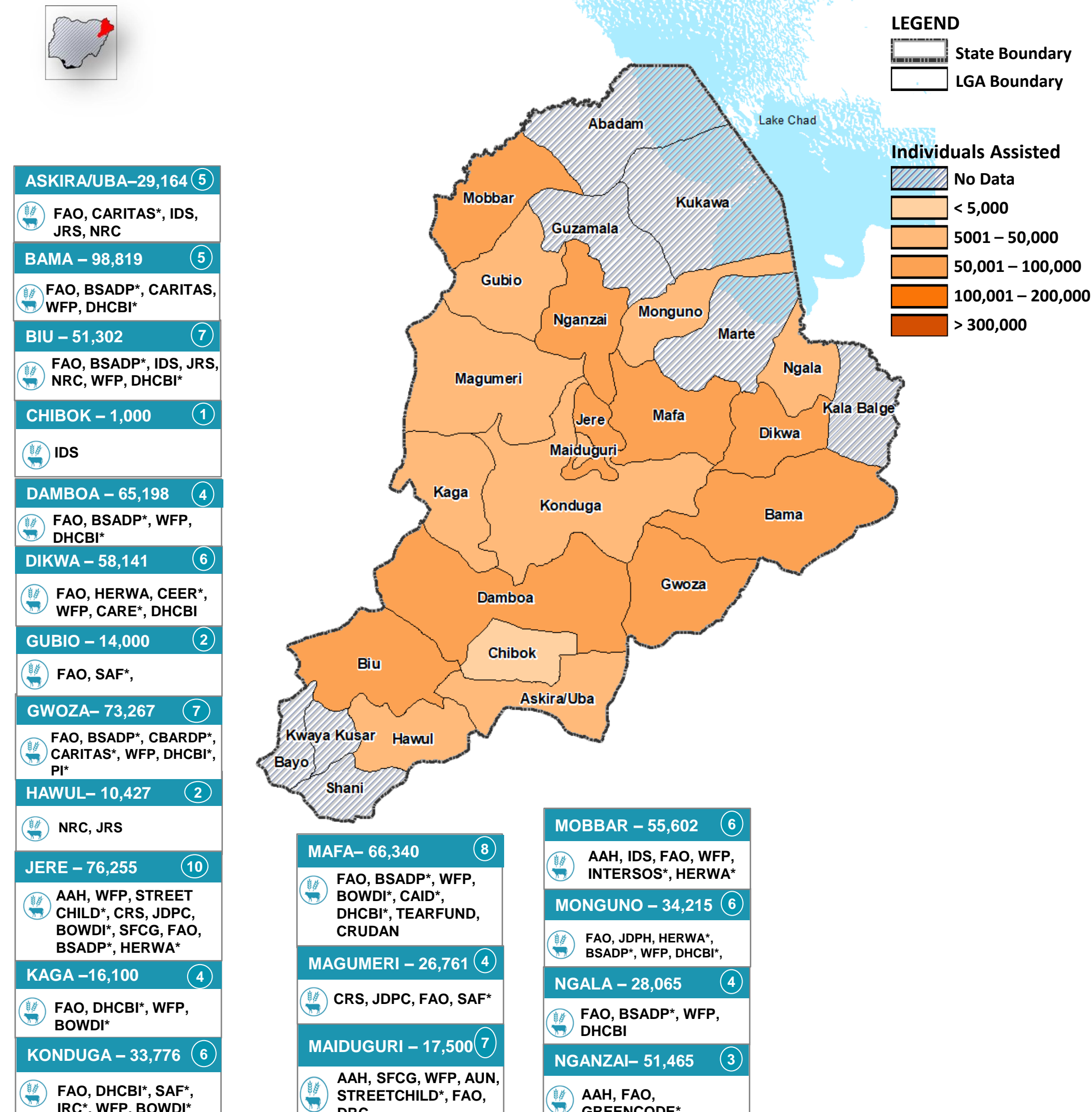
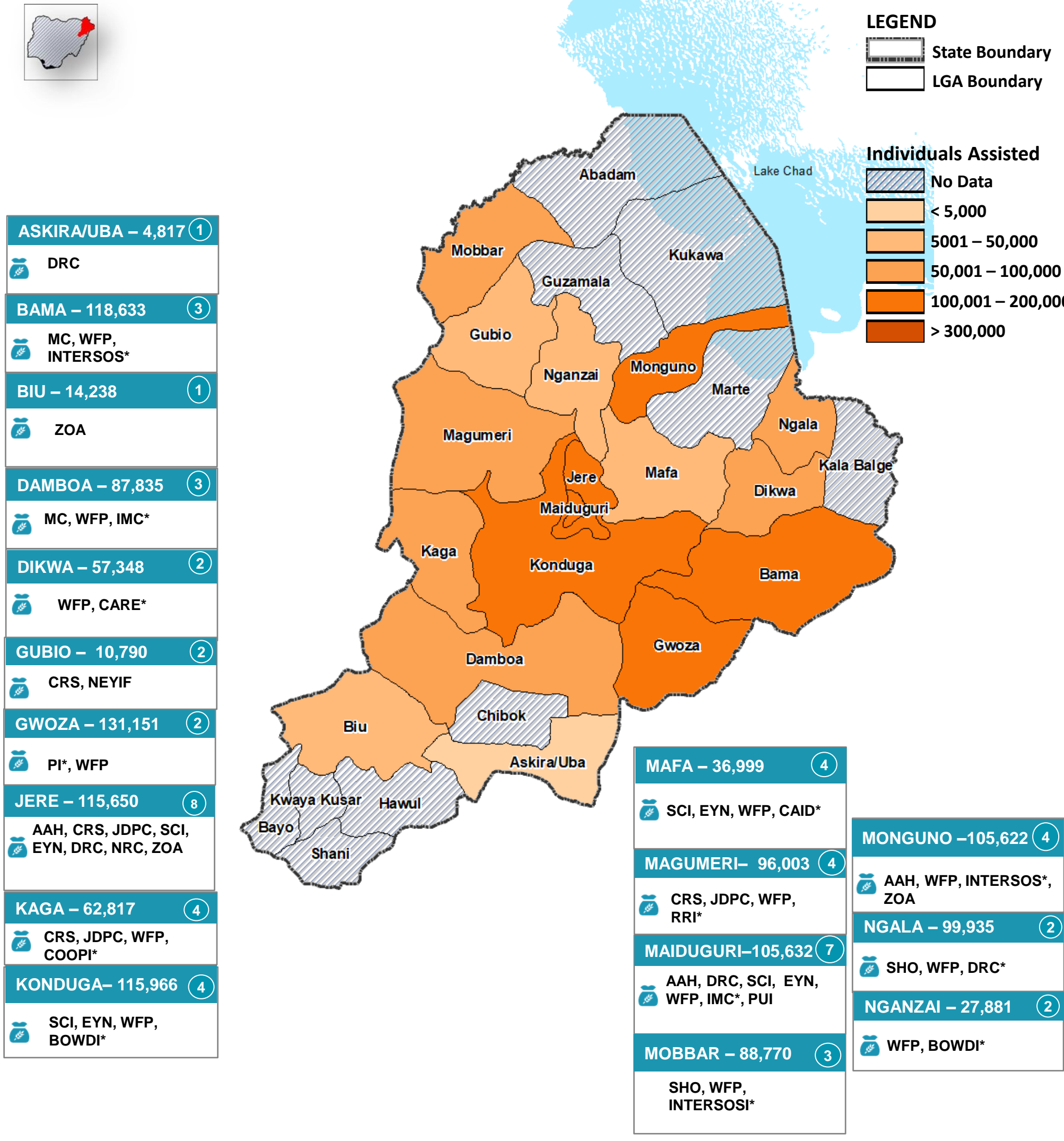


SO1 - FOOD ASSISTANCE

SO2 - AGRICULTURE & LIVELIHOODS



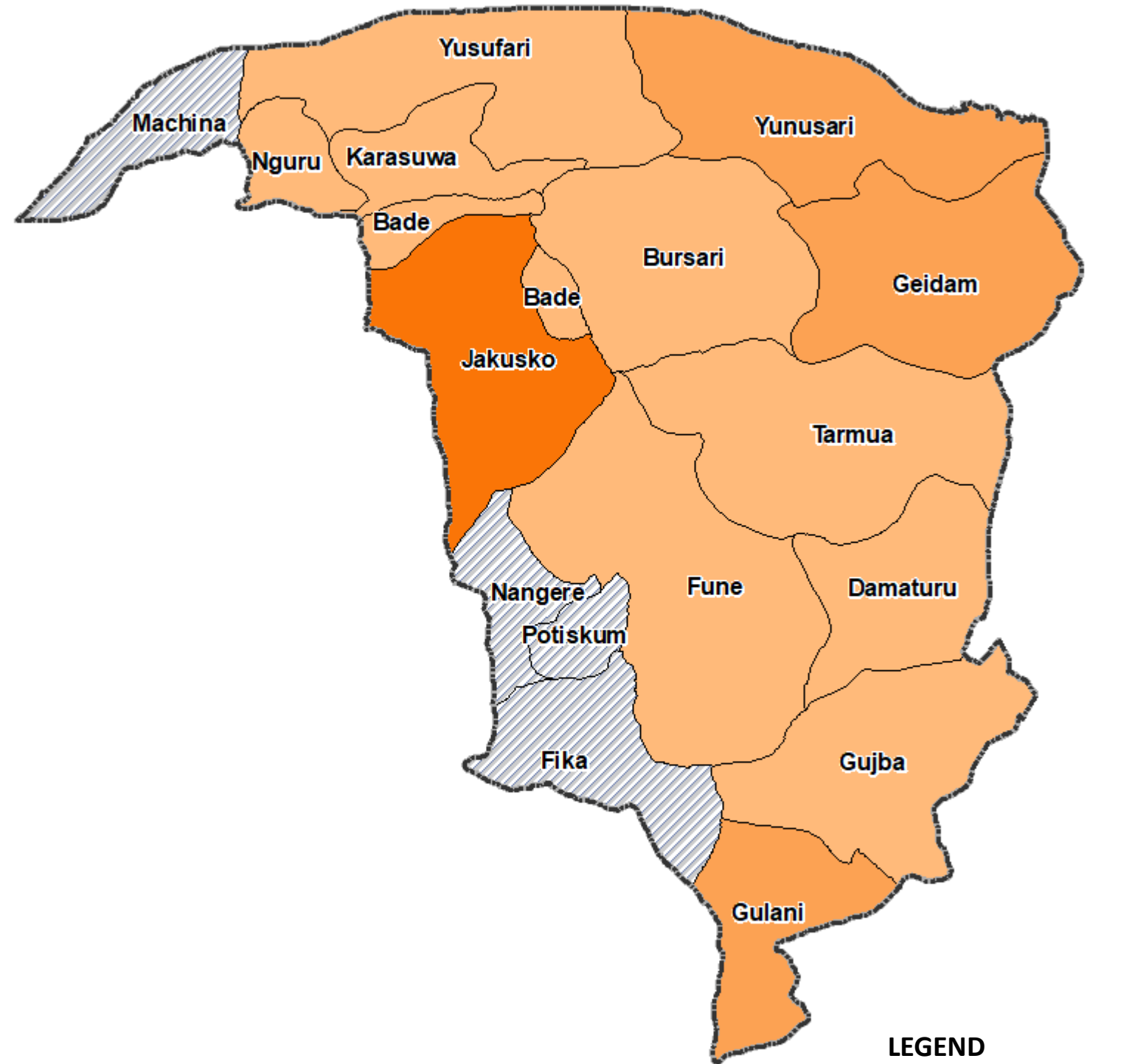
SO1 PARTNERS 25	SO2 PARTNERS 29	SO1 - ASSISTED 1.3M	TOTAL POPULATION ASSISTED IN BORNO STATE *2.1M	SO2 - CUMULATIVELY ASSISTED 796K	SO1 363K	SO2 583k	MODALITY
In-Kind	Cash/Vouchers				917K	213k	

SO1 - FOOD ASSISTANCE

SO2 - AGRICULTURE & LIVELIHOODS



BADE – 12,949 (2)	WFP, CCDRN*
BUSARI – 30,132 (2)	WFP, ActionAid*
DAMATURU – 25,036 (2)	COOPI*, WFP
FUNE – 22,975 (2)	WFP, JDPH*
GEIDAM – 69,260 (2)	WFP, COOPI*
GUJBA – 45,674 (2)	WFP, CCDRN*
GULANI – 62,621 (2)	WFP, CCDRN*
JAKUSKO – 137,760 (2)	WFP, CCDRN*
KARASUWA – 19,516 (2)	WFP, CARE*
NGURU – 5,783 (2)	WFP, CARE*
TARMUA – 23,774 (2)	WFP, FINDEF*
YUNUSARI – 55,335 (3)	COOPI, TCDI*, WFP
YUNUFARI – 10,849 (2)	WFP, CARE*

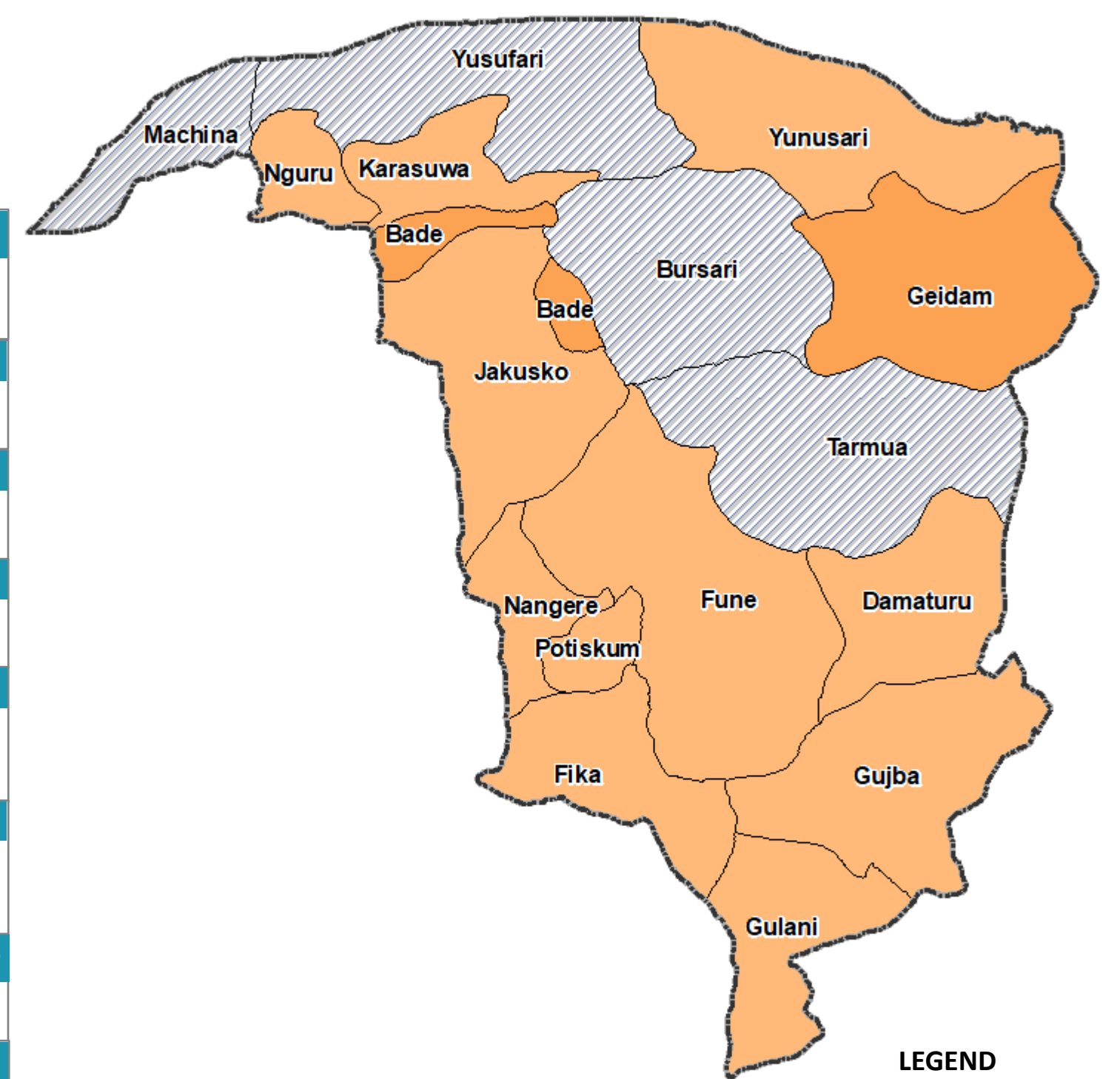


LEGEND
 State Boundary
 LGA Boundary

Individuals Assisted
 No Data
 < 5,000
 5001 – 50,000
 50,001 – 100,000
 100,001 – 200,000
 > 300,000



BADE – 69,059 (7)	FAO, DHCBI*, YADP*, HARAF, Propcom., WFP, CCDRN*
DAMATURU – 38,384 (5)	FAO, SCI, IA, CISLAC, LHI, WFP, COOPI*
FIKA – 22,728 (5)	FAO, NIRA*, HARAF, Propcom, UNDP
FUNE – 19,936 (3)	FAO, DHCBI*, CEER*
GEIDAM – 86,929 (7)	MC, FAO, DHCBI*, DRC, YADP*, WFP, COOPI*
GUJBA – 34,330 (9)	DRC, DHCBI*, FAO, YADP*, CCDRN*, SCI, IA, CISLAC, LHI
GULANI – 30,724 (3)	DRC, FAO, YADP*
JAKUSKO – 8,820 (2)	FAO, DHCBI*
KARASUWA – 9,800 (2)	FAO, DHCBI*
NANGERE – 13,630 (3)	AAH, FAO, DHCBI
NGURU – 5,610 (3)	FAO, YADP*



LEGEND
 State Boundary
 LGA Boundary

Individuals Assisted
 No Data
 < 5,000
 5001 – 50,000
 50,001 – 100,000
 100,001 – 200,000
 > 300,000

POTISKUM – 17,710 (8)	FAO, DHCBI*, HARAF, Propcom, IA, CISLAC, LHI, SCI
YUNUSARI – 40,503 (5)	COOPI, MC, DRC, FAO, YADP*

SO1 PARTNERS



8

SO2 PARTNERS



17

SO1 - ASSISTED



522K

TOTAL POPULATION ASSISTED IN YOBE STATE



***920k**

SO2 - CUMULATIVELY ASSISTED



398K

In-Kind



Cash/Vouchers

SO1

395K

127K

SO2

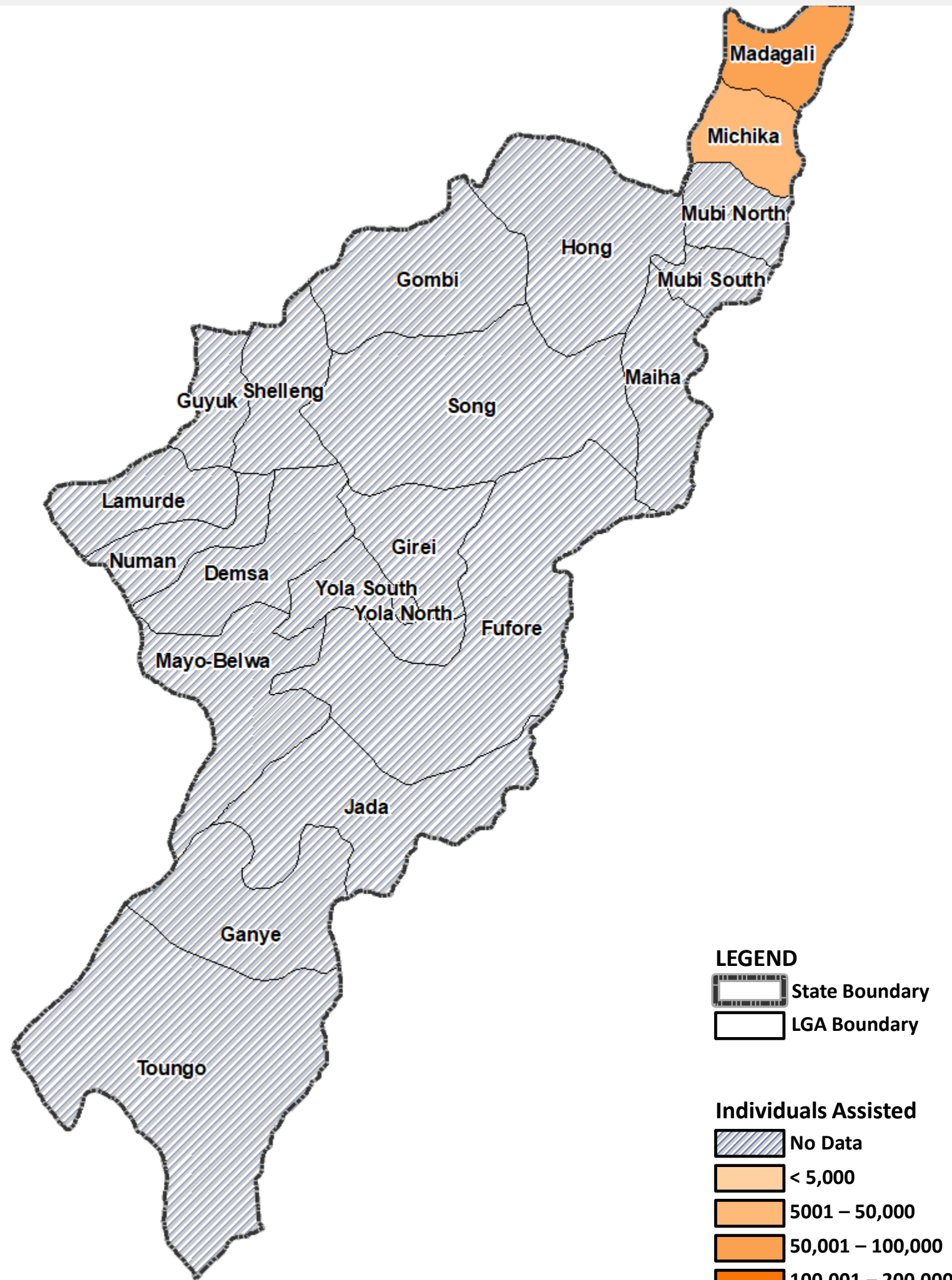
252K

146K

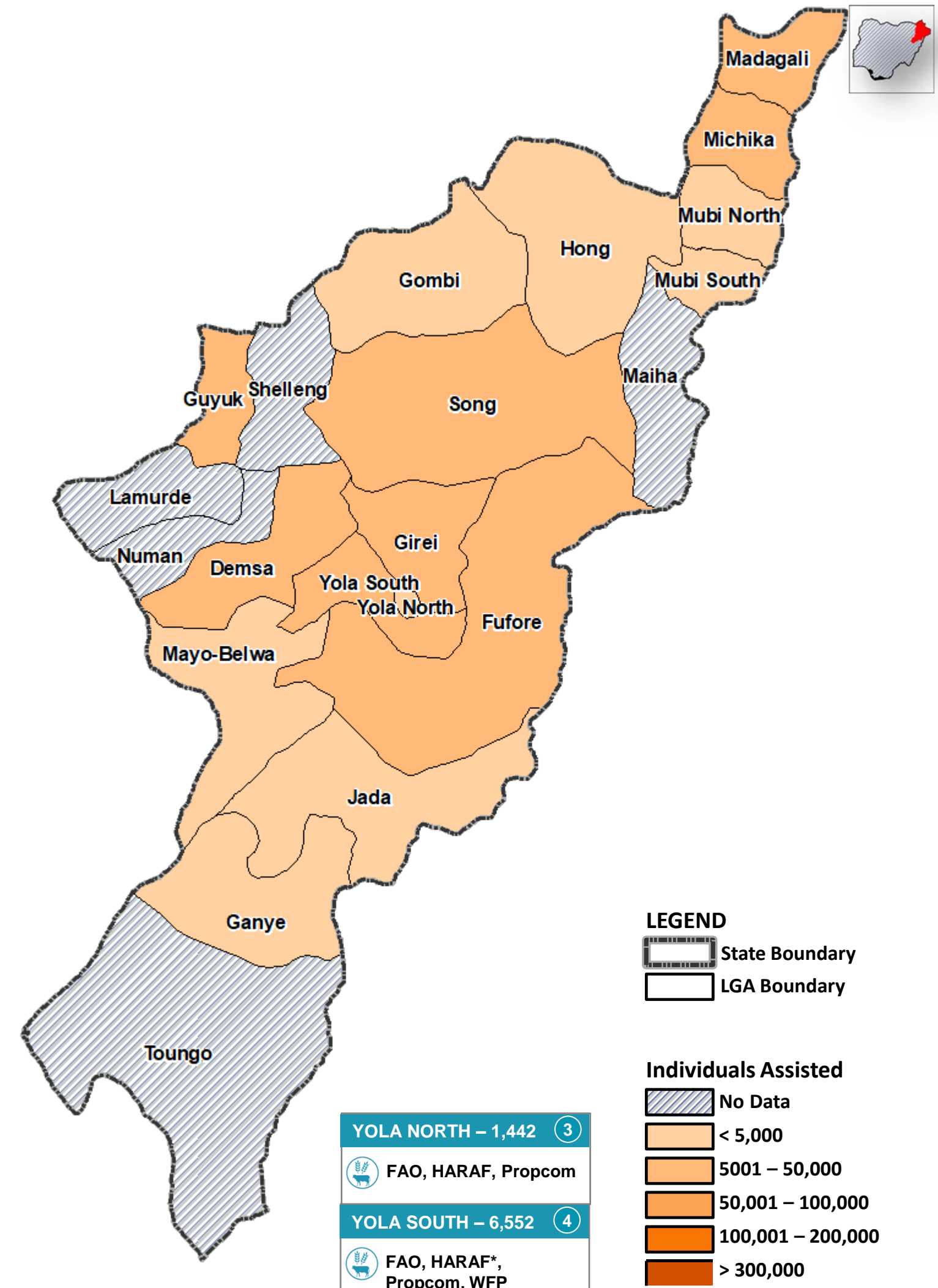
MODALITY

SO1 - FOOD ASSISTANCE

SO2 - AGRICULTURE & LIVELIHOODS



DEMSA – 8,260 (2)	FAO, CEER*
FUFORE – 28,227 (6)	FAO, AADP*, HARAF, Propcom, VSO, DHCBI*
GANYE – 3,500 (2)	FAO, AADP*
GIREI – 12,807 (5)	FAO, AADP*, HARAF, VSO, JRS
GOMBI – 1,000 (2)	FAO, UNDP
GUYUK – 11,900 (3)	FAO, AADP*, DHCBI*
HONG – 4,200 (2)	HARAF, Propcom
JADA – 3,500 (2)	FAO, AADP*
MADAGALI – 25,522 (5)	FAO, AADP*, CARITAS*, WFP, CCDRN*
MAYO BELWA – 462 (2)	FAO, DHCBI*
MICHIKA – 14,407 (5)	DRC, FAO, AADP*, CCDRN, JRS
MUBI NORTH – 76 (2)	FAO, JRS
MUBI SOUTH – 210 (1)	FAO
SONG – 11,252 (1)	FAO, CEER*



YOLA NORTH – 1,442 (3)	FAO, HARAF, Propcom
YOLA SOUTH – 6,552 (4)	FAO, HARAF*, Propcom, WFP

SO1 PARTNERS



3

SO2 PARTNERS



13

SO1 - ASSISTED



105K

TOTAL POPULATION ASSISTED IN ADAMAWA STATE



***238K**

SO2 - CUMULATIVELY ASSISTED



133K

In-Kind



74K

131K

Cash/Vouchers



31K

2K

MODALITY