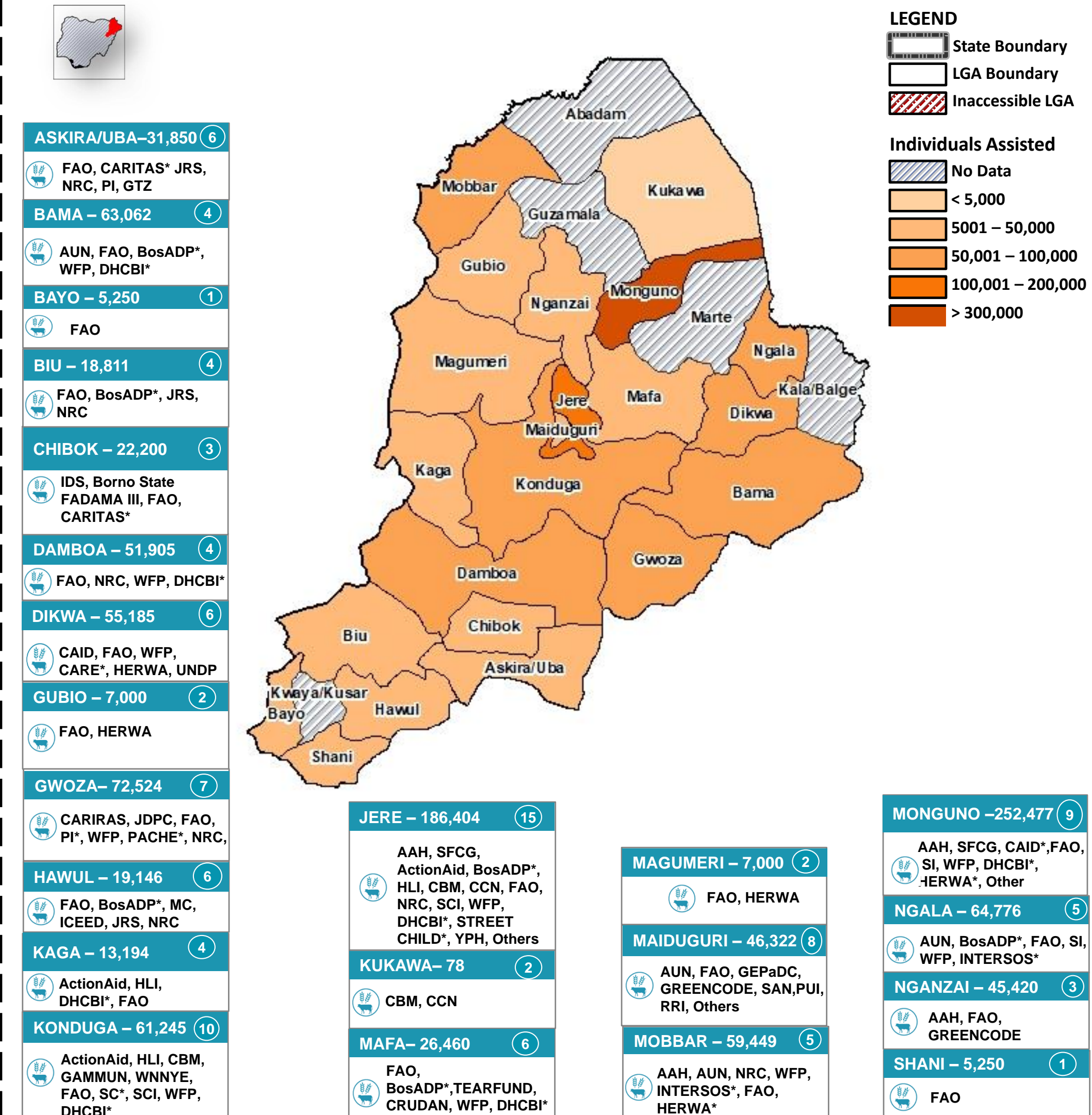
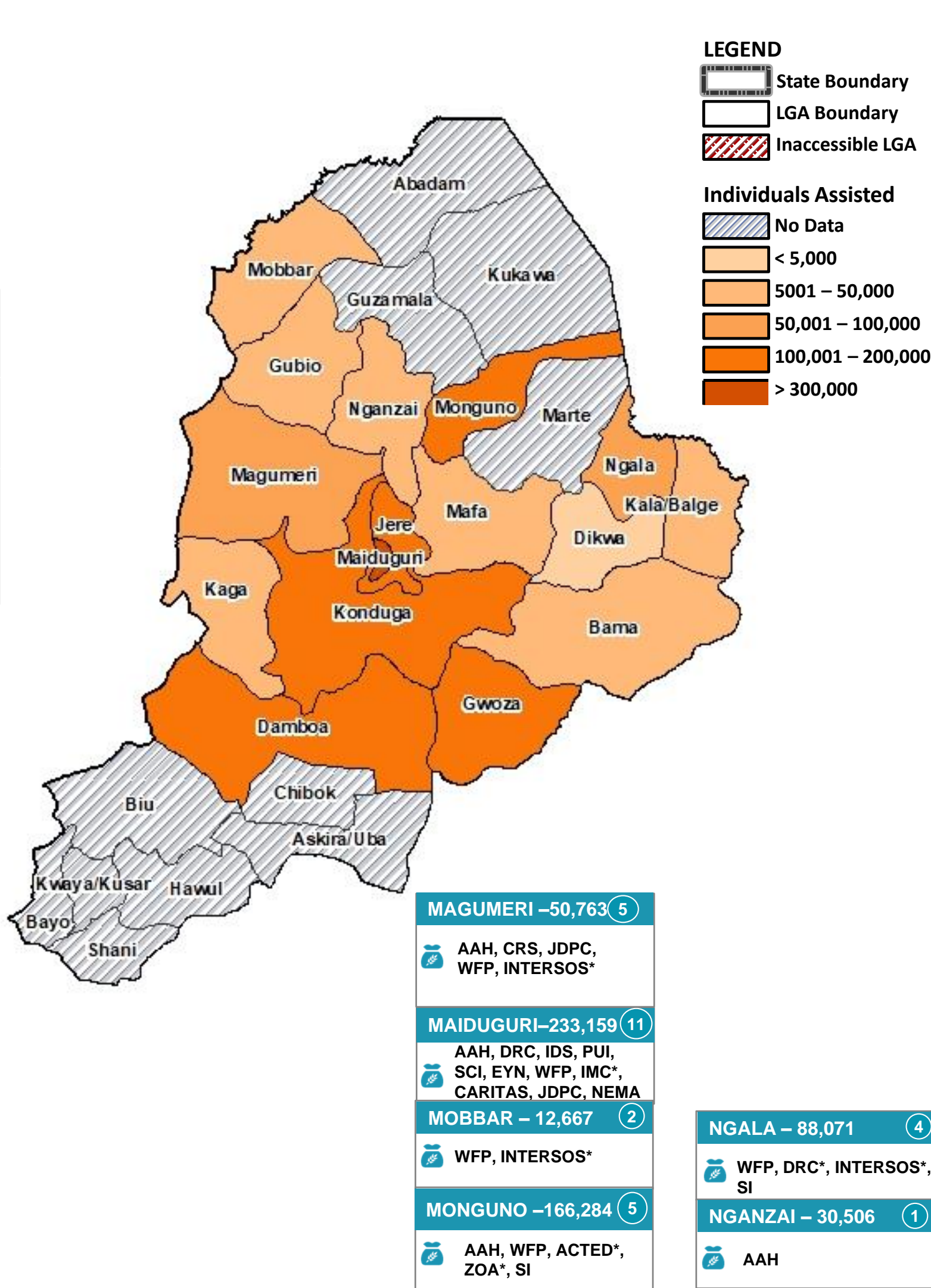


## SO1 - FOOD ASSISTANCE

## SO2 - AGRICULTURE & LIVELIHOODS



SO1 PARTNERS

SO2 PARTNERS

SO1 - ASSISTED

**TOTAL POPULATION ASSISTED IN BORNO STATE**

SO2 - CUMULATIVELY ASSISTED

SO1

SO2



23

11

Partners with both SO1&2 activities



41



1.3M



**\*2.4M**



1.1M

In-Kind



445K

732k

Cash/Vouchers



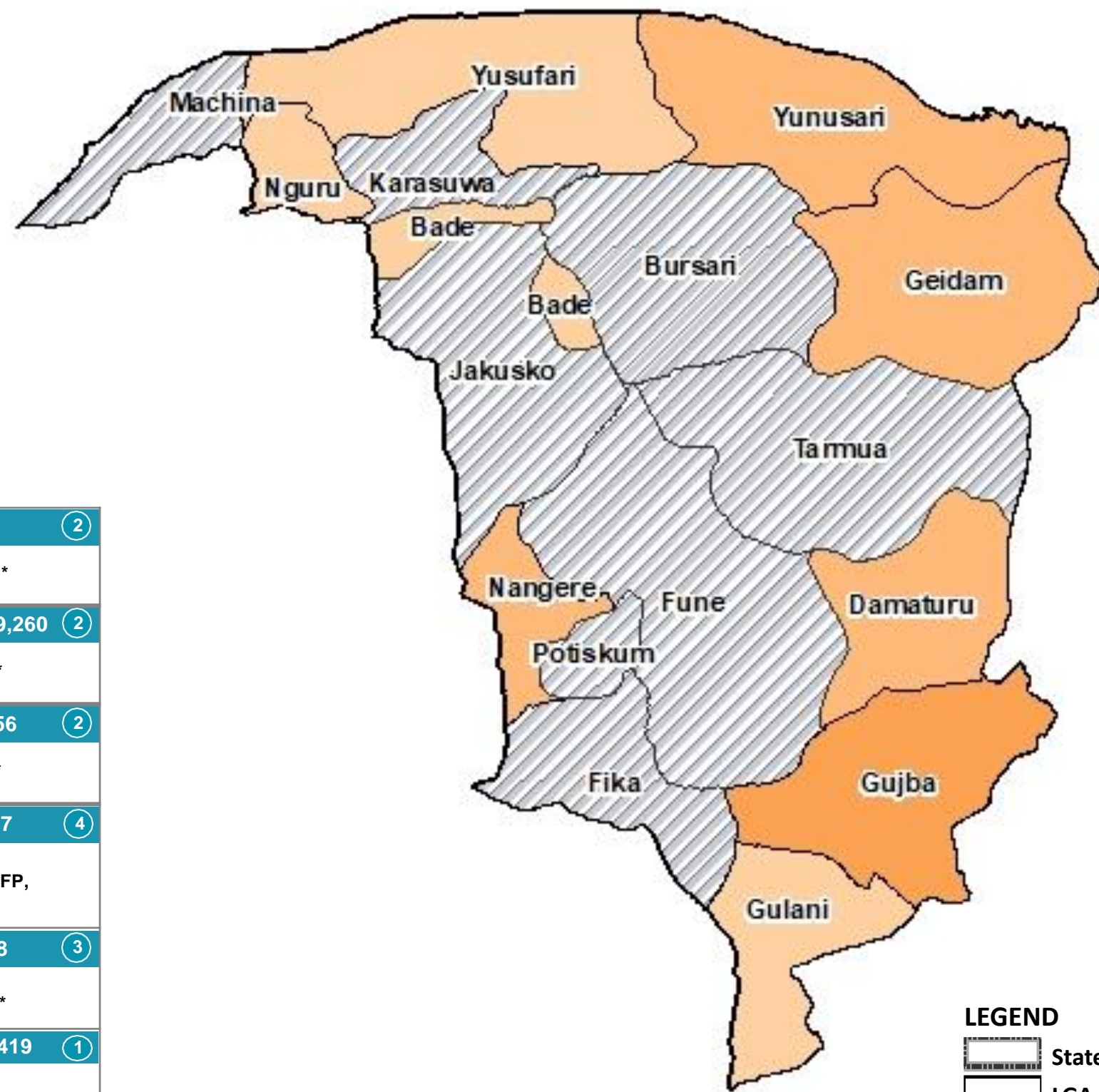
878K

382k

MODALITY



## SO1 - FOOD ASSISTANCE



|                              |
|------------------------------|
| <b>BADE - 257</b> (2)        |
| WFP, CCDRN*                  |
| <b>DAMATURU - 9,260</b> (2)  |
| WFP, COOPI*                  |
| <b>GEIDAM - 30,956</b> (2)   |
| WFP, COOPI*                  |
| <b>GUJBA - 63,087</b> (4)    |
| AAH, DRC, WFP, CCDRN*        |
| <b>GULANI - 4,388</b> (3)    |
| WFP, CCDRN*                  |
| <b>NANGERE - 6,419</b> (1)   |
| AAH                          |
| <b>NGURU - 1,773</b> (2)     |
| WFP, CARE*                   |
| <b>YUNUSARI - 29,457</b> (2) |
| WFP, CARE*                   |
| <b>YUSUFARI - 2,924</b> (2)  |
| WFP, CARE*                   |

**LEGEND**

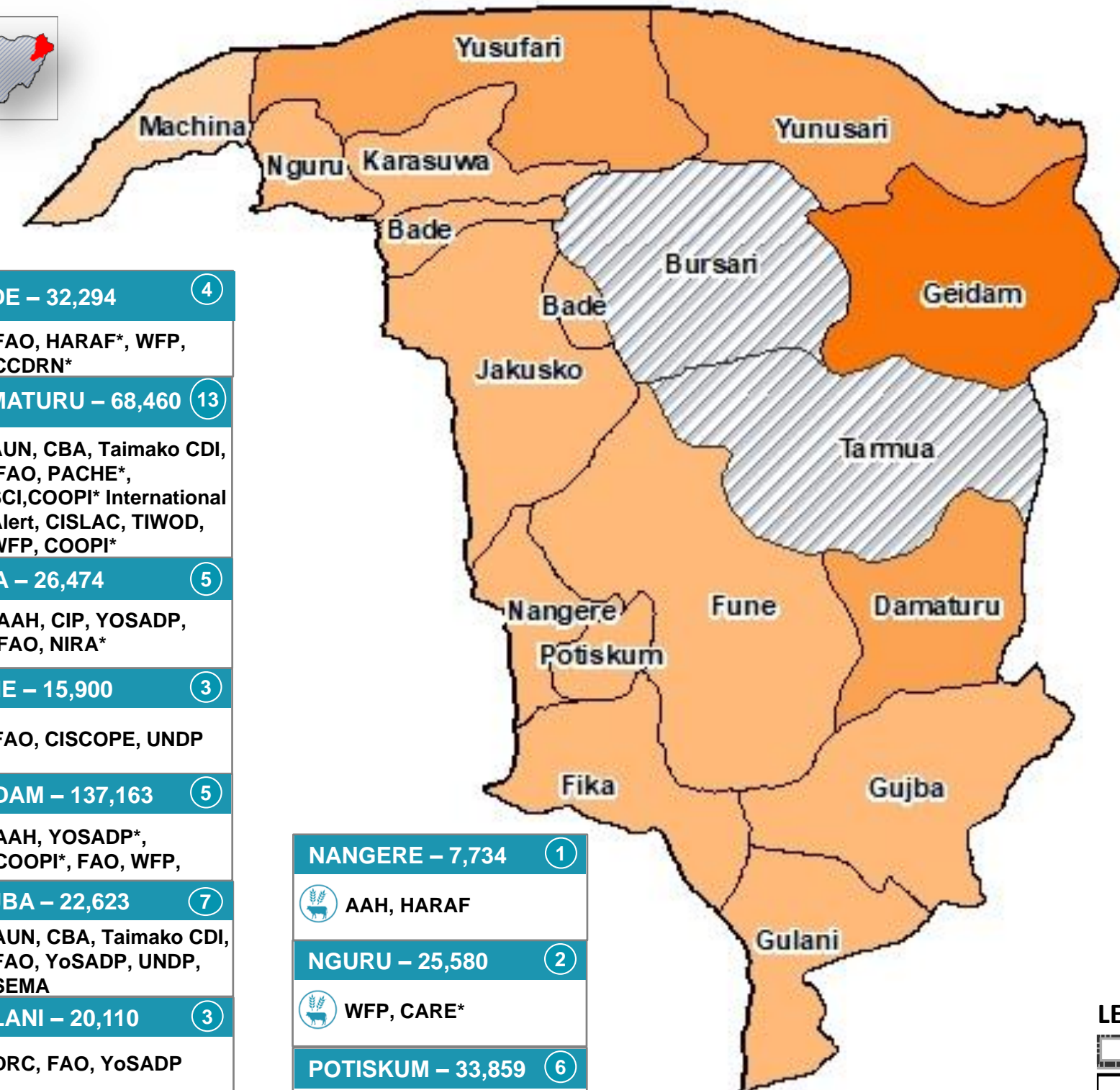
- State Boundary
- LGA Boundary
- Inaccessible LGA

**Individuals Assisted**

- No Data
- < 5,000
- 5001 - 50,000
- 50,001 - 100,000
- 100,001 - 200,000
- > 300,000



## SO2 - AGRICULTURE & LIVELIHOODS



|   |
|---|
| <b>BADE - 32,294</b> (4)  |
| FAO, HARAF*, WFP, CCDRN*  |
| <b>DAMATURU - 68,460</b> (13)   |
| AUN, CBA, Taimako CDI, FAO, PACHE*, SCI, COOPI* International Alert, CISLAC, TIWOD, WFP, COOPI* |
| <b>FIKA - 26,474</b> (5)  |
| AAH, CIP, YOSADP, FAO, NIRA*  |
| <b>FUNE - 15,900</b> (3)  |
| FAO, CISCOPE, UNDP  |
| <b>GEIDAM - 137,163</b> (5)   |
| AAH, YOSADP*, COOPI*, FAO, WFP,   |
| <b>GUJBA - 22,623</b> (7)   |
| AUN, CBA, Taimako CDI, FAO, YoSADP, UNDP, SEMA  |
| <b>GULANI - 20,110</b> (3)  |
| DRC, FAO, YoSADP  |
| <b>JAKUSKO - 5,600</b> (1)  |
| FAO   |
| <b>KARASUWA - 5,600</b> (1)   |
| FAO   |
| <b>MACHINA - 4,479</b> (4)  |
| AAH, FAO, CIP, YOSADP   |

|  |
|--|
| <b>NANGERE - 7,734</b> (1)                             |
| AAH, HARAF   |
| <b>NGURU - 25,580</b> (2)                              |
| WFP, CARE*   |
| <b>POTISKUM - 33,859</b> (6)                           |
| CISCOPE*, FAO, SCI, International Alert, CISLAC, TIWOD |
| <b>YUNUSARI - 70,579</b> (6)                           |
| AAH, CIP, COOPI, YOSADP, WFP, CARE*                    |
| <b>YUSUFARI - 92,426</b> (2)                           |
| WFP, CARE*   |

**LEGEND**

- State Boundary
- LGA Boundary
- Inaccessible LGA

**Individuals Assisted**

- No Data
- < 5,000
- 5001 - 50,000
- 50,001 - 100,000
- 100,001 - 200,000
- > 300,000

SO1 PARTNERS



5

SO2 PARTNERS



23

SO1 - ASSISTED



149K

**TOTAL POPULATION ASSISTED IN YOBE STATE**



**\*717K**

SO2 - CUMULATIVELY ASSISTED



568K

In-Kind



Cash/Vouchers

SO1

9K

140K

SO2

224K

344K

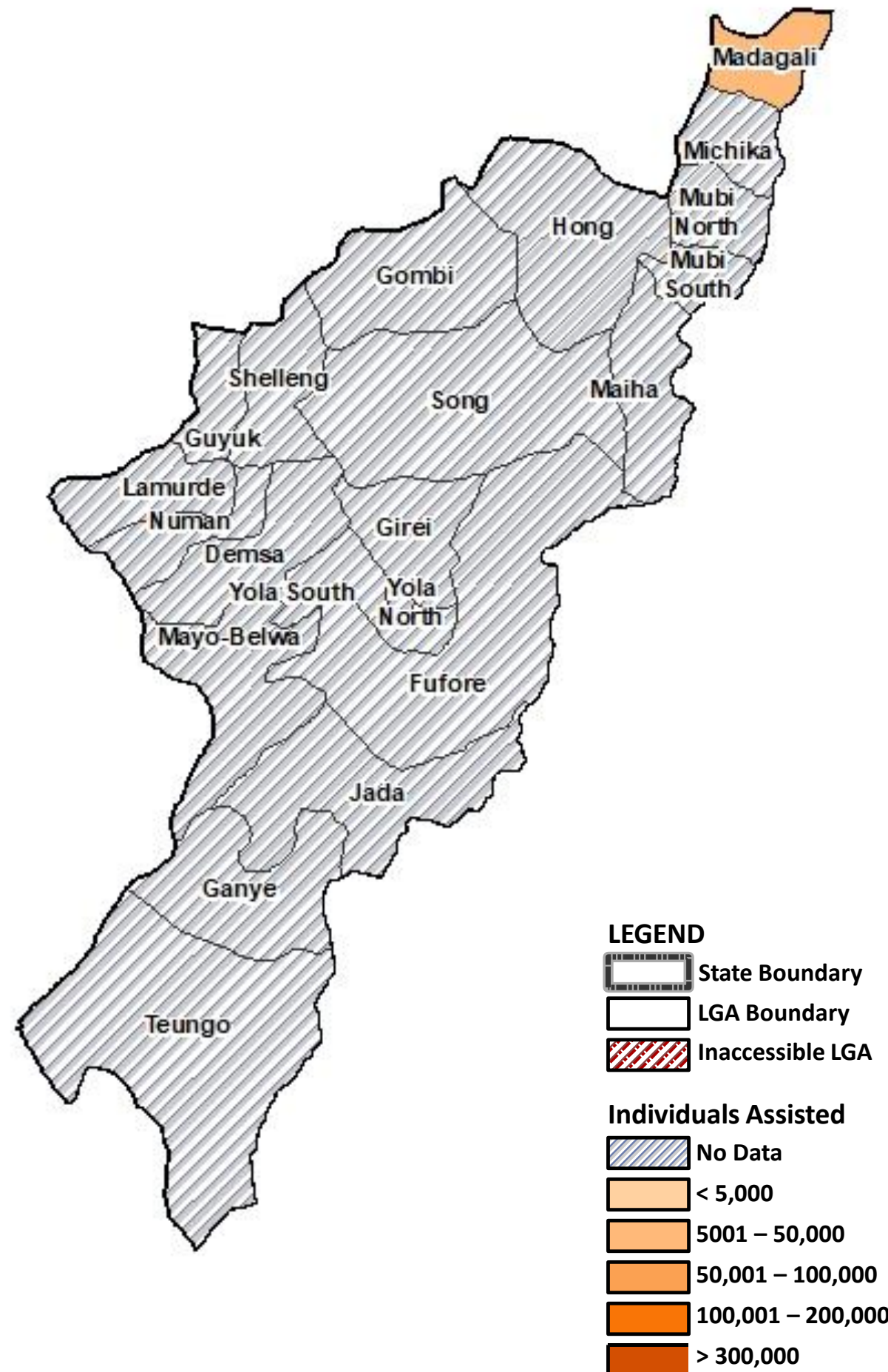
MODALITY

## SO1 - FOOD ASSISTANCE

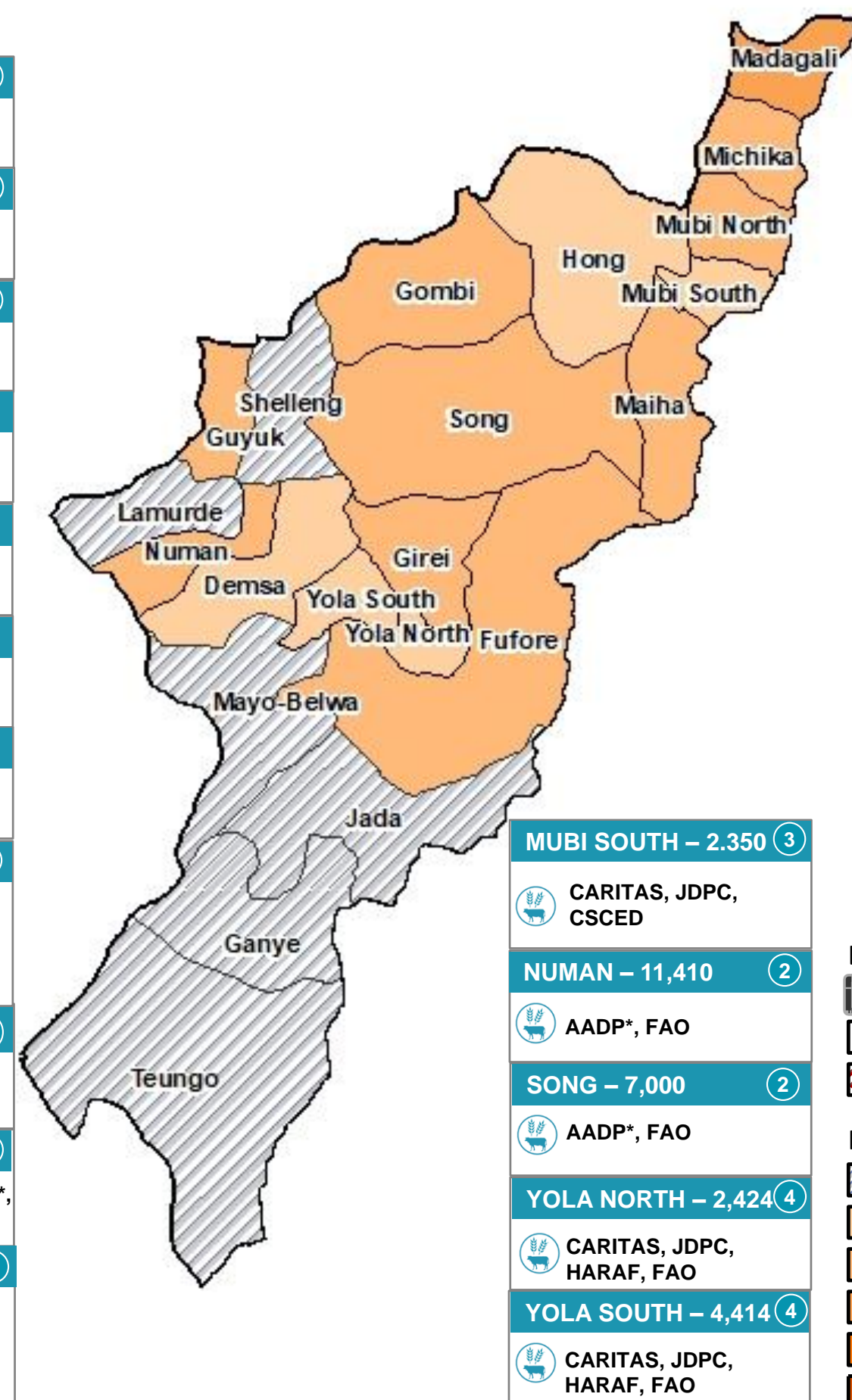
## SO2 - AGRICULTURE & LIVELIHOODS



**MADAGALI – 10,748** ①  
DRC



|                             |   |
|-----------------------------|---|
| <b>DEMSA – 350</b> ①        | FAO   |
| <b>FUFURE – 8,600</b> ③     | AADP*, HARAF, FAO                                       |
| <b>GIREI – 13,720</b> ①     | AADP*, FAO  |
| <b>GOMBI – 14,210</b> ②     | CISCOPE, FAO  |
| <b>GOMBI – 14,210</b> ②     | CISCOPE, FAO  |
| <b>GUYUK – 7,000</b> ②      | AADP*, FAO  |
| <b>HONG – 10</b> ①          | UNDP  |
| <b>MADAGALI – 70,736</b> ⑨  | AADP*, CARITAS, JDPC, FAO, JRS, UNDP, SEMA, WFP, CCDRN* |
| <b>MAIHA – 9,540</b> ③      | CEPFoWY, MoL&Fadama III, FAO                            |
| <b>MICHIKA – 31,034</b> ⑥   | CARITAS, JDPC, AADP*, FAO, JRS, PI                      |
| <b>MUBI NORTH – 7,597</b> ⑦ | CARITAS, JDPC, CSCED, FAO, JRS, NRC, IRC                |



|                             |                           |
|-----------------------------|---------------------------|
| <b>MUBI SOUTH – 2,350</b> ③ | CARITAS, JDPC, CSCED      |
| <b>NUMAN – 11,410</b> ②     | AADP*, FAO                |
| <b>SONG – 7,000</b> ②       | AADP*, FAO                |
| <b>YOLA NORTH – 2,424</b> ④ | CARITAS, JDPC, HARAF, FAO |
| <b>YOLA SOUTH – 4,414</b> ④ | CARITAS, JDPC, HARAF, FAO |

SO1 PARTNERS



1

SO2 PARTNERS



19

SO1 - ASSISTED



11K

**TOTAL POPULATION ASSISTED IN ADAMAWA STATE**



**\*201K**

SO2 - CUMULATIVELY ASSISTED



190K

In-Kind



SO1

-

SO2

150K

Cash/Vouchers



11K

40K

MODALITY

Sector's online dashboard:

[https://public.tableau.com/profile/ng\\_food\\_security\\_sector#/vizhome/shared/S4CCXRC39](https://public.tableau.com/profile/ng_food_security_sector#/vizhome/shared/S4CCXRC39)

The boundaries and names shown and the designations used on this map do not imply official endorsement or acceptance by the UN.

**Disclaimer:** This dashboard captures information available at the moment of production based on partners' reporting.

**TOTAL\*:** It refers to unique individuals assisted (without double counts) as some beneficiaries were assisted under both SOs.

**Organizations\*:** Partners who also implement activities with FAO and/or WFP.

Production date: 31 - September - 2020 Data sources: FSS 5Ws data for August 2020 / FSS Partners

Contact: Nigeria Food Security Sector [info.Nigeria@fscluster.org](mailto:info.Nigeria@fscluster.org)