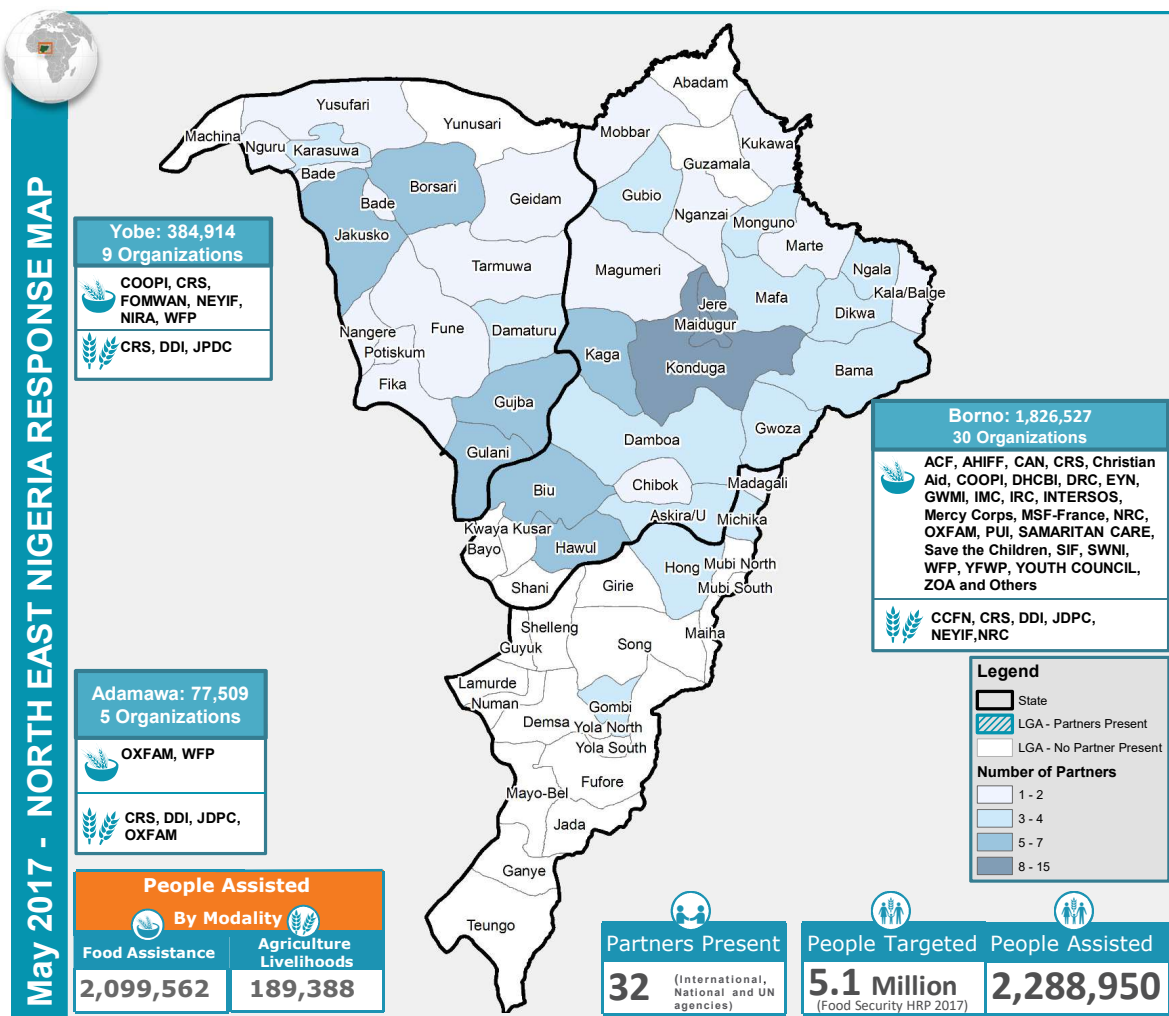


Violent insurgency in northeast of the Nigeria has resulted in social and political unrest, severely disrupting economic and agricultural activities. This has increased the risk of food insecurity with the most affected in Borno, Yobe and Adamawa states.

According to the March 2017 Cadre Harmonise (CH) for June – August 2017, approximately 8.9 million people are projected to fall into CH Phases 3 (Crisis), Phase 4 (Emergency) and Phase 5 (Famine) in the 16 north eastern states of Nigeria. Of this total, 5.2 million are in Adamawa, Borno, and Yobe states. Additionally, 50,000 people are projected to fall into CH Phase 5 (Famine) without food assistance.

The Food Security Sector Lean Season Response Plan targets 2.8 million people in Adamawa, Borno, and Yobe states. Of this, 1.9 million people will receive Food Assistance (cash, vouchers, or in-kind food) and 1.4 million people will receive Agriculture-based livelihood Support (approximately 0.5 million will receive both Food Assistance and Agricultural Support, to assist in protecting and re-starting livelihoods).

In May 2017, the Food Security Sector reached some **2.3 million** persons, which is 45% of the 2017 Food Security Sector HRP target of 5.1 million vulnerable people in Borno, Yobe, and Adamawa states.



The boundaries and names shown and the designations used on this map do not imply official endorsement or acceptance by the UN.

KEY FACTS & FIGURES

FSS Strategic Objectives

SO1: Provision of food assistance to meet emergency food needs of food insecure population

In Kind

Cash Transfer/ Voucher



1,421,726 People Assisted

677,836 People Assisted

SO2: Improve household agriculture production (crops, livestock and fisheries) protect and restore livelihoods through support to agro-based production and livelihoods activities for vulnerable populations

In Kind

Cash Transfer/ Voucher



164,982 People Assisted

24,406 People Assisted

PEOPLE REACHED



5.1 MILLION (2017 HRP Target)



2.3 million Assisted (Assisted, 45%)

2.8 million not Assisted (Gap, 55%)

RESPONSES BY MODALITY



2,288,950 *

Refers to people assisted through SO1 and SO2 May 2017

SO1



2,099,562
Food Assistance

SO2



189,388
Agriculture and Livelihood

FUNDING REQUIRED

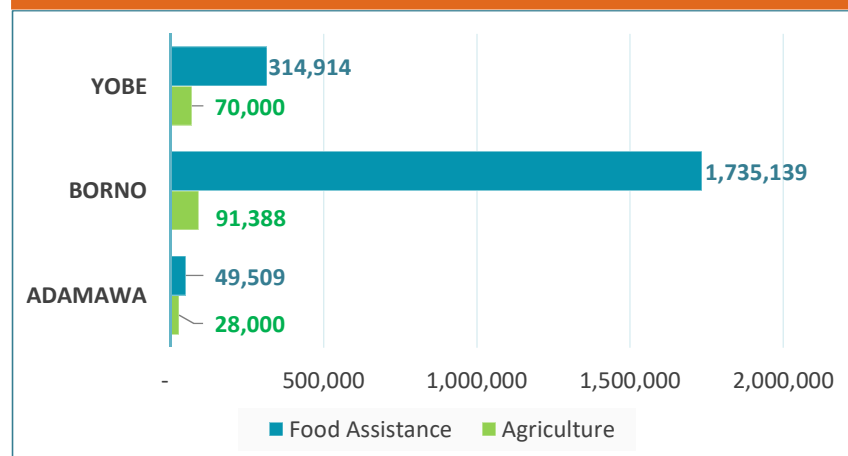


125 M \$ (26%) Resourced:



480 MILLION
\$356 m (74%) (Requirement) Unmet

SO1 AND SO2 INTERVENTION BY STATE



Data sources: FSS 5Ws data matrix for May 2017 /FSS Partners