

In October 2023, the food security sector assisted around 1.6 million people with food assistance and around 399 thousand people with agriculture and livelihoods, of which 60 percent (978,014) and 45 percent (177,898) respectively received support, through cash voucher assistance (CVA). A total of 29 organizations, national, and international non-governmental organizations, and UN agencies used various delivery mechanisms such as cash payments, mobile money transfers, paper vouchers, and electronic vouchers. Borno state hosts 74 percent of the CVA beneficiaries, with Yobe state hosting 24 percent and Adamawa state has 1 percent.

## KEY FACTS & FIGURES ON CASH & VOUCHER ASSISTANCE

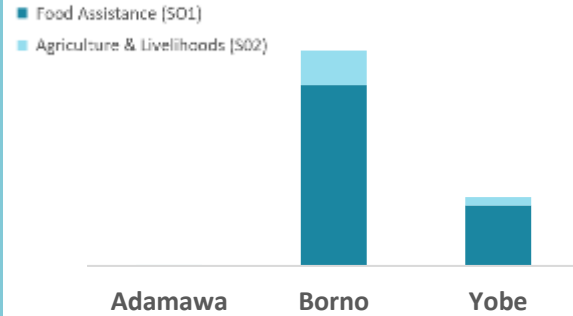


**978,014**  
Food Assistance



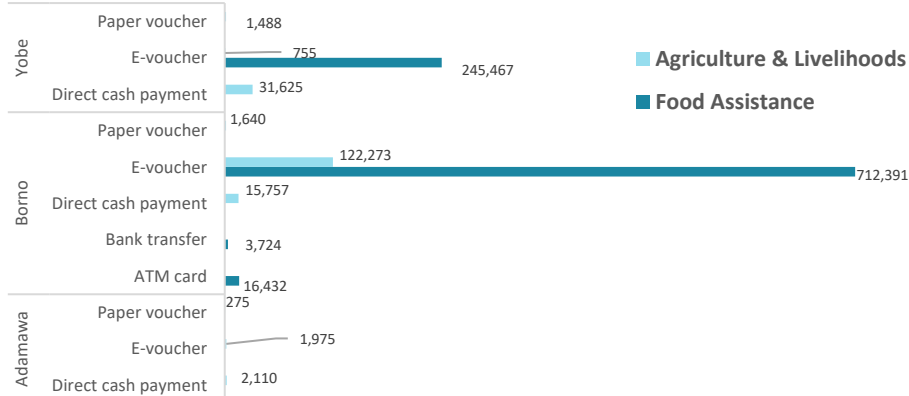
**177,898**  
Agriculture & Livelihood

### Cash & Voucher Assistance at State Level

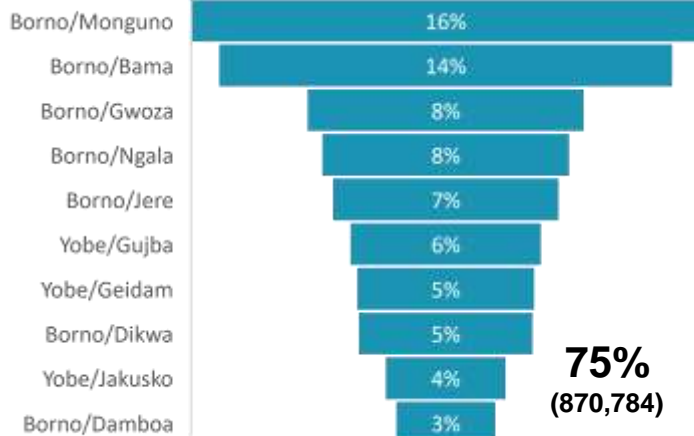


SO1	Borno	Yobe
732,547	245,467	33,868
SO2	4,360	139,670
139,670	33,868	-

### Cash & Voucher Assistance Modalities Used at State Level



### Top 10 of the 36 LGAs with Cash Voucher Assistance



### MODALITY | PEOPLE ASSISTED

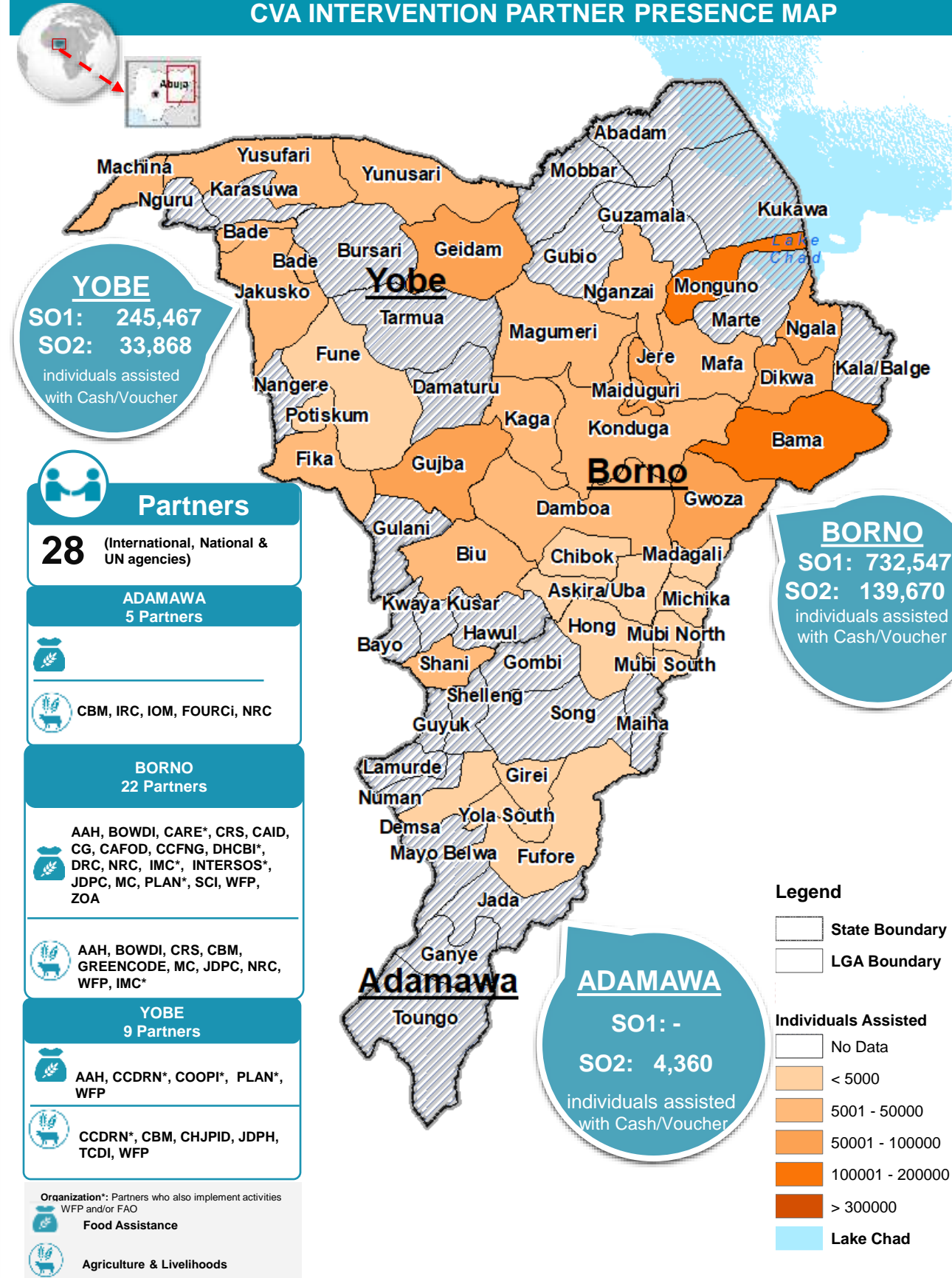
#### DELIVERY MODE/People Assisted

Modality	People Assisted	Percentage
ATM card	16,432	1%
Bank transfer	3,724	0.6%
Direct cash payment	49,492	4%
E-voucher	1,082,861	94%
Paper voucher	3,403	0.4%

#### CONDITIONALITY/People Assisted

Conditional	38,425 (3%)
Unconditional	1,117,487 (97%)

## CVA INTERVENTION PARTNER PRESENCE MAP



**YOBE**  
SO1: 245,467  
SO2: 33,868  
individuals assisted with Cash/Voucher

**Partners**  
28 (International, National & UN agencies)

**ADAMAWA**  
5 Partners  
CBM, IRC, IOM, FOURCI, NRC

**BORNO**  
22 Partners  
AAH, BOWDI, CARE\*, CRS, CAID, CG, CAFOD, CCFNG, DHCBI\*, DRC, NRC, IMC\*, INTERSOS\*, JDPC, MC, PLAN\*, SCI, WFP, ZOA

**YOBE**  
9 Partners  
AAH, CCDRN\*, COOPI\*, PLAN\*, WFP

**ADAMAWA**  
SO1: -  
SO2: 4,360  
individuals assisted with Cash/Voucher