

In March 2021, under SO1 (Food Assistance), 94% (1,092,196) were reached through Cash Voucher Assistance (CVA) and under SO2 (Agric Livelihoods), 6% (64,154) were reached through CVA. Twenty-five organizations, including national and international NGOs and UN agencies, applied various transfer delivery mechanisms, such as cash in hand, mobile money transfers, paper vouchers and electronic vouchers. Borno state hosts the highest caseload, approximately 85% of the CVA beneficiaries, compared to 15% and 0.1% in Yobe and Adamawa states, respectively.

KEY FACTS & FIGURES ON CASH & VOUCHER ASSISTANCE – as of March 2021



1,092,196

Total number of people assisted through Cash/Voucher as of March 2021



1,028,042

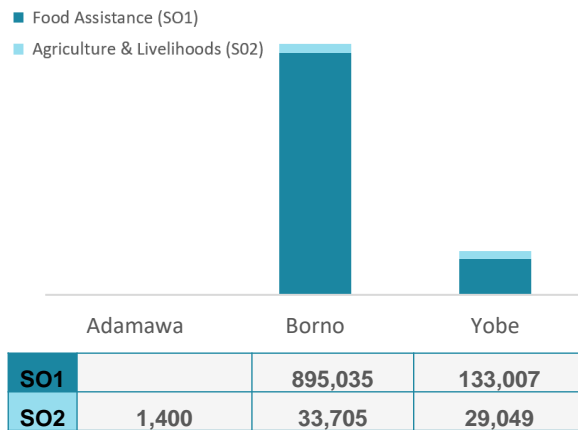
Food Assistance



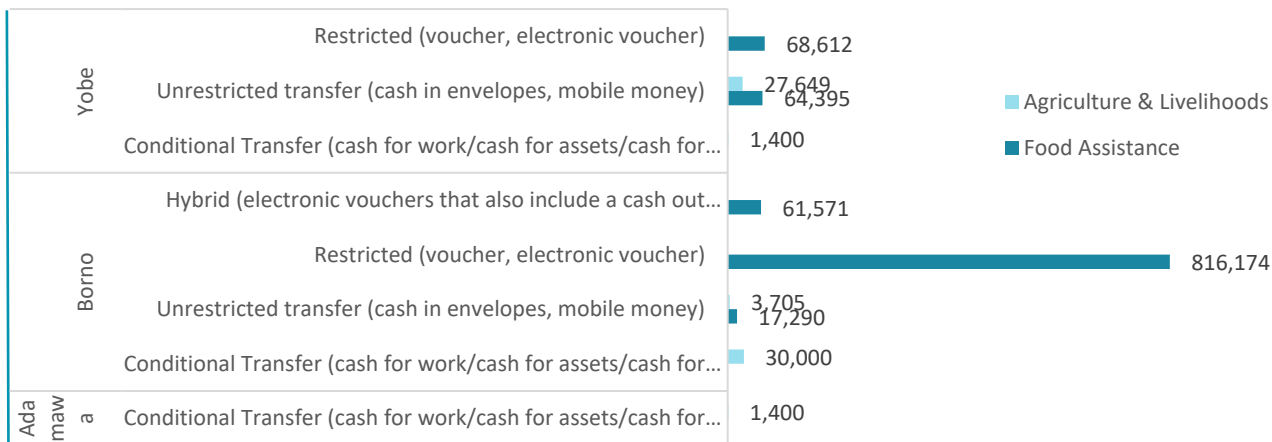
64,154

Agriculture & Livelihood

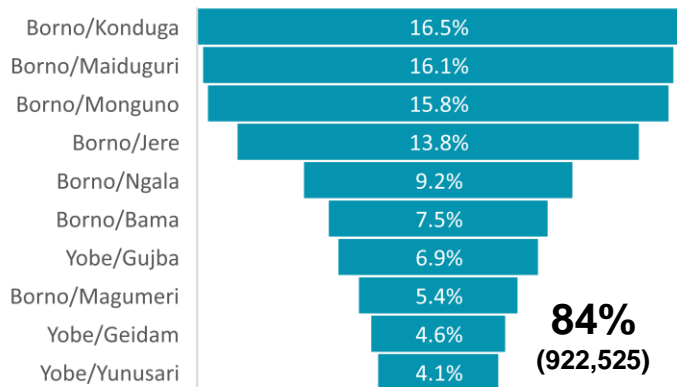
Cash & Voucher Assistance at State Level



Cash & Voucher Assistance Modalities Used at State Level



Top 10 of the 24 LGAs with CVA in 2021

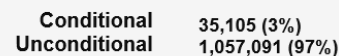


84%
(922,525)

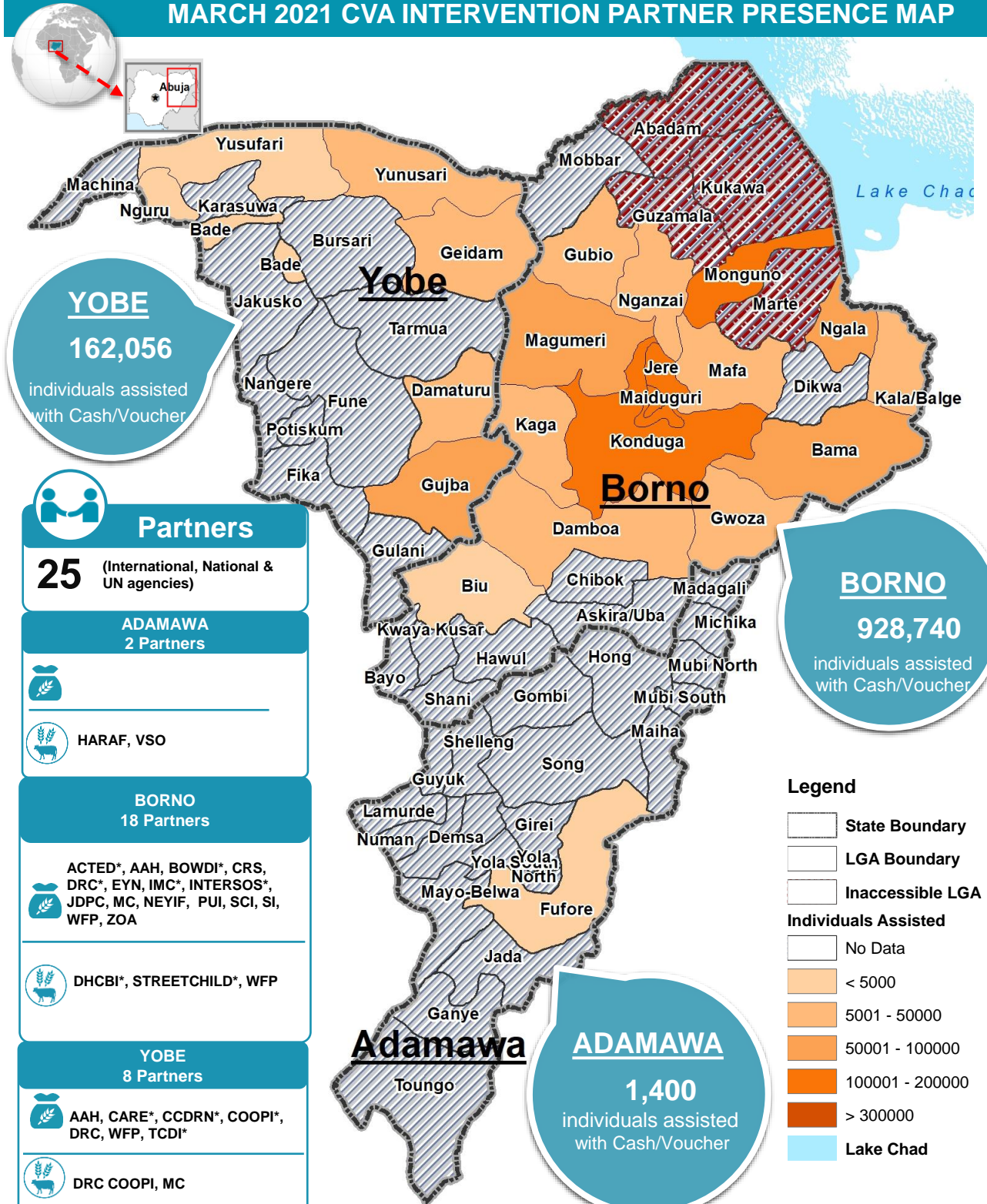
MODALITY PEOPLE ASSISTED



CONDITIONALITY/People Assisted



MARCH 2021 CVA INTERVENTION PARTNER PRESENCE MAP



YOBE
162,056
individuals assisted with Cash/Voucher

BORNO
928,740
individuals assisted with Cash/Voucher

ADAMAWA
1,400
individuals assisted with Cash/Voucher

Partners
25 (International, National & UN agencies)

ADAMAWA
2 Partners
HARAF, VSO

BORNO
18 Partners
ACTED*, AAH, BOWDI*, CRS, DRC*, EYN, IMC*, INTERSOS*, JDPC, MC, NEYIF, PUI, SCI, SI, WFP, ZOA

YOBE
8 Partners
DHCBI*, STREETCHILD*, WFP

ADAMAWA
8 Partners
AAH, CARE*, CCDRN*, COOPI*, DRC, WFP, TCDI*

ADAMAWA
1 Partner
DRC COOPI, MC

Legend

- State Boundary
- LGA Boundary
- Inaccessible LGA
- Individuals Assisted
- No Data
- < 5000
- 5001 - 50000
- 50001 - 100000
- 100001 - 200000
- > 300000
- Lake Chad