

In July 2023, the food security sector assisted around 2.5 million people with food assistance and around 180 thousand people with agriculture and livelihoods, of which 57 percent (1,455,866) and 32 percent (58,417) respectively received support, through cash voucher assistance (CVA). A total of 28 organizations, national, and international non-governmental organizations, and UN agencies used various delivery mechanisms such as cash payments, mobile money transfers, paper vouchers, and electronic vouchers. Borno state hosts 57 percent of the CVA beneficiaries, with Yobe state hosting 28 percent and Adamawa state has 1 percent.

KEY FACTS & FIGURES ON CASH & VOUCHER ASSISTANCE

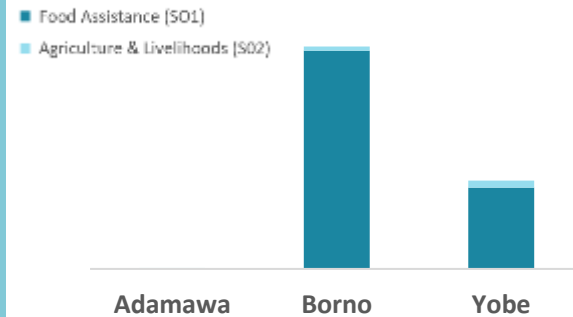


1,455,866
Food Assistance



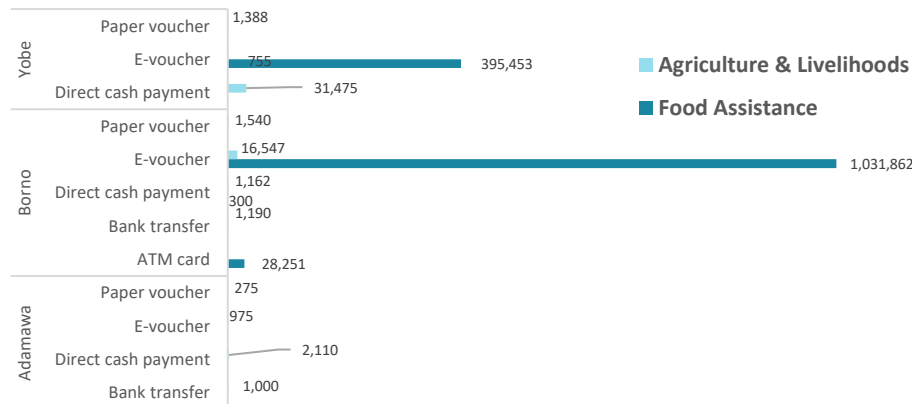
58,417
Agriculture & Livelihood

Cash & Voucher Assistance at State Level

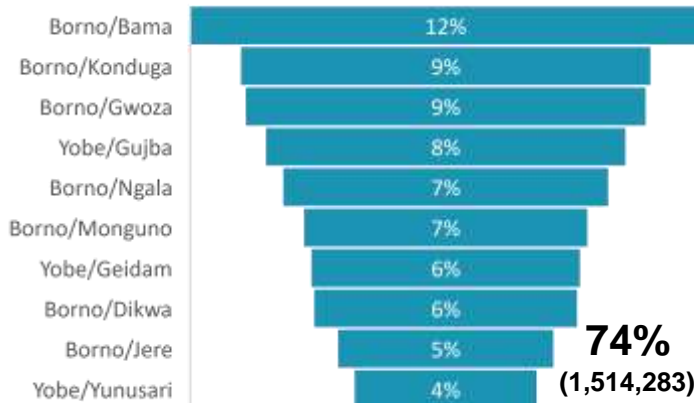


SO1	Adamawa	Borno	Yobe
SO1	1,060,413	395,453	33,618
SO2	4,360	20,439	33,618

Cash & Voucher Assistance Modalities Used at State Level



Top 10 of the 35 LGAs with Cash Voucher Assistance



MODALITY | PEOPLE ASSISTED

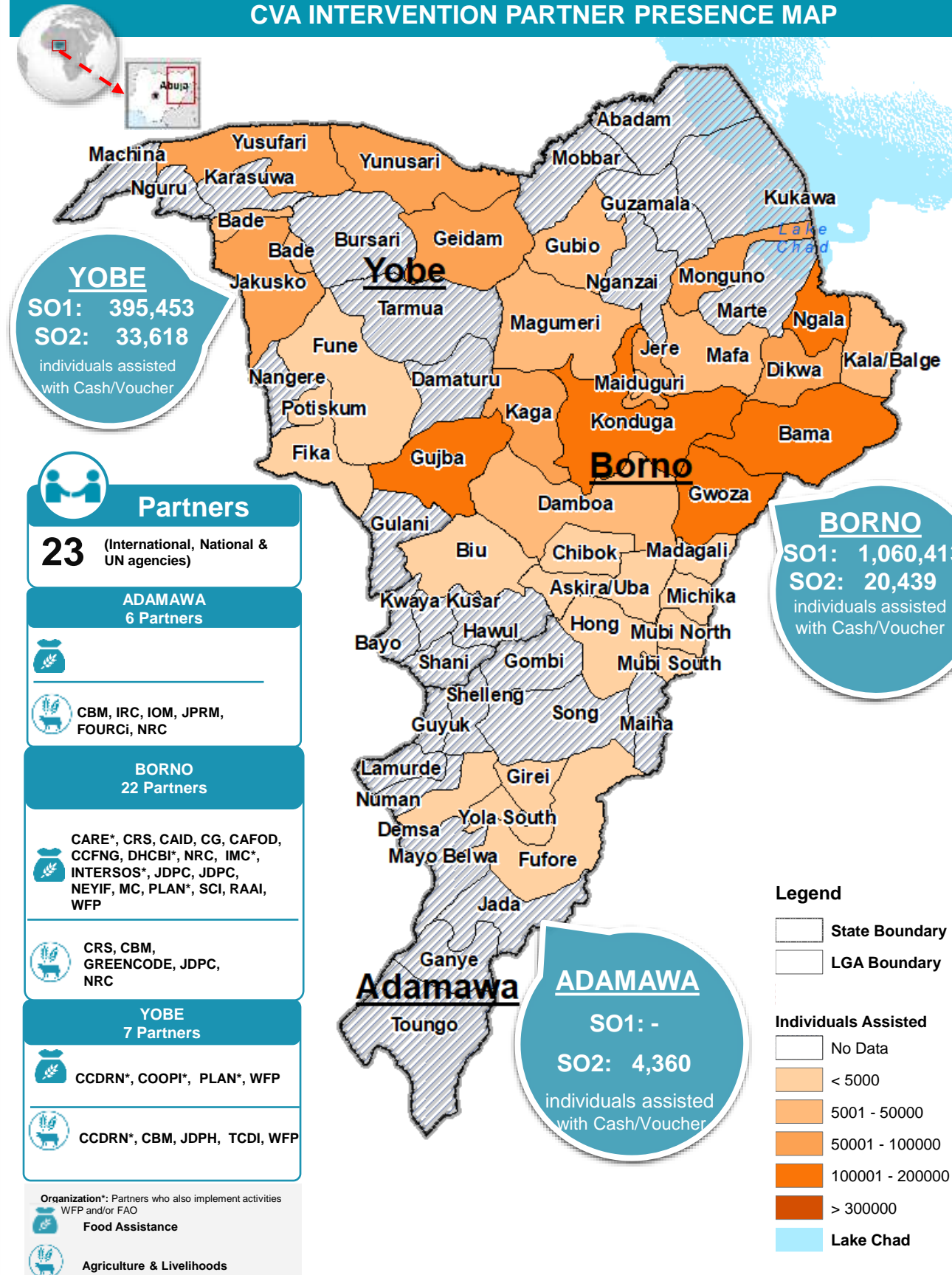
DELIVERY MODE/People Assisted

Modality	People Assisted	Percentage
ATM card	28,251	1..9%
Bank transfer	2,190	0.2%
Direct cash payment	35,047	2.3%
E-voucher	1,445,592	95.5%
Paper voucher	3,203	0.2%

CONDITIONALITY/People Assisted

Conditionality	People Assisted	Percentage
Conditional	39,487	(3%)
Unconditional	1,474,796	(97%)

CVA INTERVENTION PARTNER PRESENCE MAP



Partners

23 (International, National & UN agencies)

ADAMAWA

6 Partners

CBM, IRC, IOM, JPRM, FOURCi, NRC

BORNO

22 Partners

CARE*, CRS, CAID, CG, CAFOD, CCFNG, DHCBI*, NRC, IMC*, INTERSOS*, JDPC, JDPC, NEYIF, MC, PLAN*, SCI, RAAI, WFP

YOBE

7 Partners

CCDRN*, COOPI*, PLAN*, WFP

CCDRN*, CBM, JDPH, TCDI, WFP

Organization*: Partners who also implement activities WFP and/or FAO

Food Assistance

Agriculture & Livelihoods

Legend

- State Boundary
- LGA Boundary
- Individuals Assisted
- No Data
- < 5000
- 5001 - 50000
- 50001 - 100000
- 100001 - 200000
- > 300000
- Lake Chad