

In July 2021, the Food Security Sector assisted 2,290,287 individuals with food assistance (SO1) and 668,820 individuals for agriculture & livelihoods (SO2), of whom 43% (984,973) and 36% (241,560) received assistance through Cash Voucher Assistance (CVA) for SO1 and SO2 respectively. Twenty-Five organizations, including national and international NGOs and UN agencies, applied various transfer delivery mechanisms, such as cash in hand, mobile money transfers, paper vouchers and electronic vouchers. Borno state hosts the highest caseload, approximately 84% of the CVA beneficiaries, compared to 23% and 3% in Yobe and Adamawa states, respectively.

**KEY FACTS & FIGURES ON CASH & VOUCHER ASSISTANCE – as of July 2021**



**1,226,533**

Total number of people assisted through Cash/Voucher as of July 2021



**984,973**

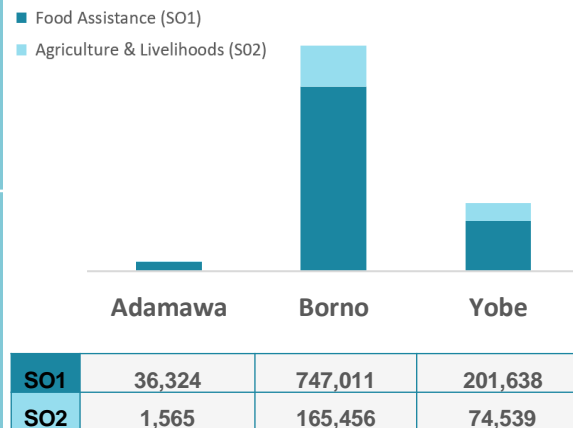
Food Assistance



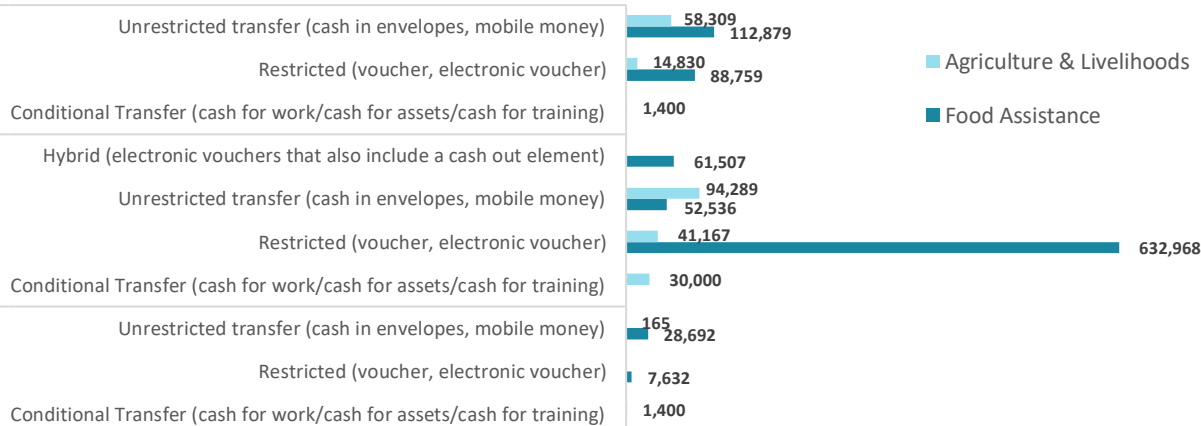
**241,560**

Agriculture & Livelihood

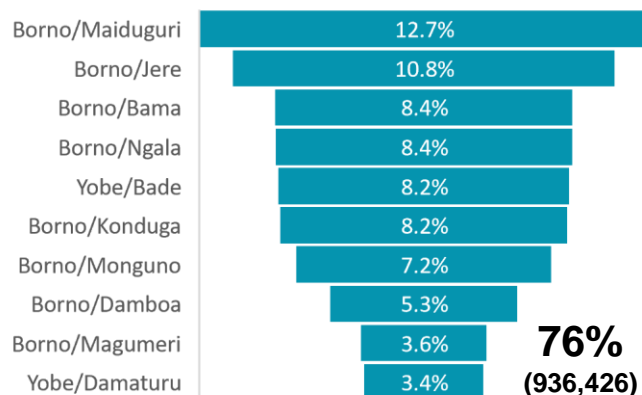
**Cash & Voucher Assistance at State Level**



**Cash & Voucher Assistance Modalities Used at State Level**



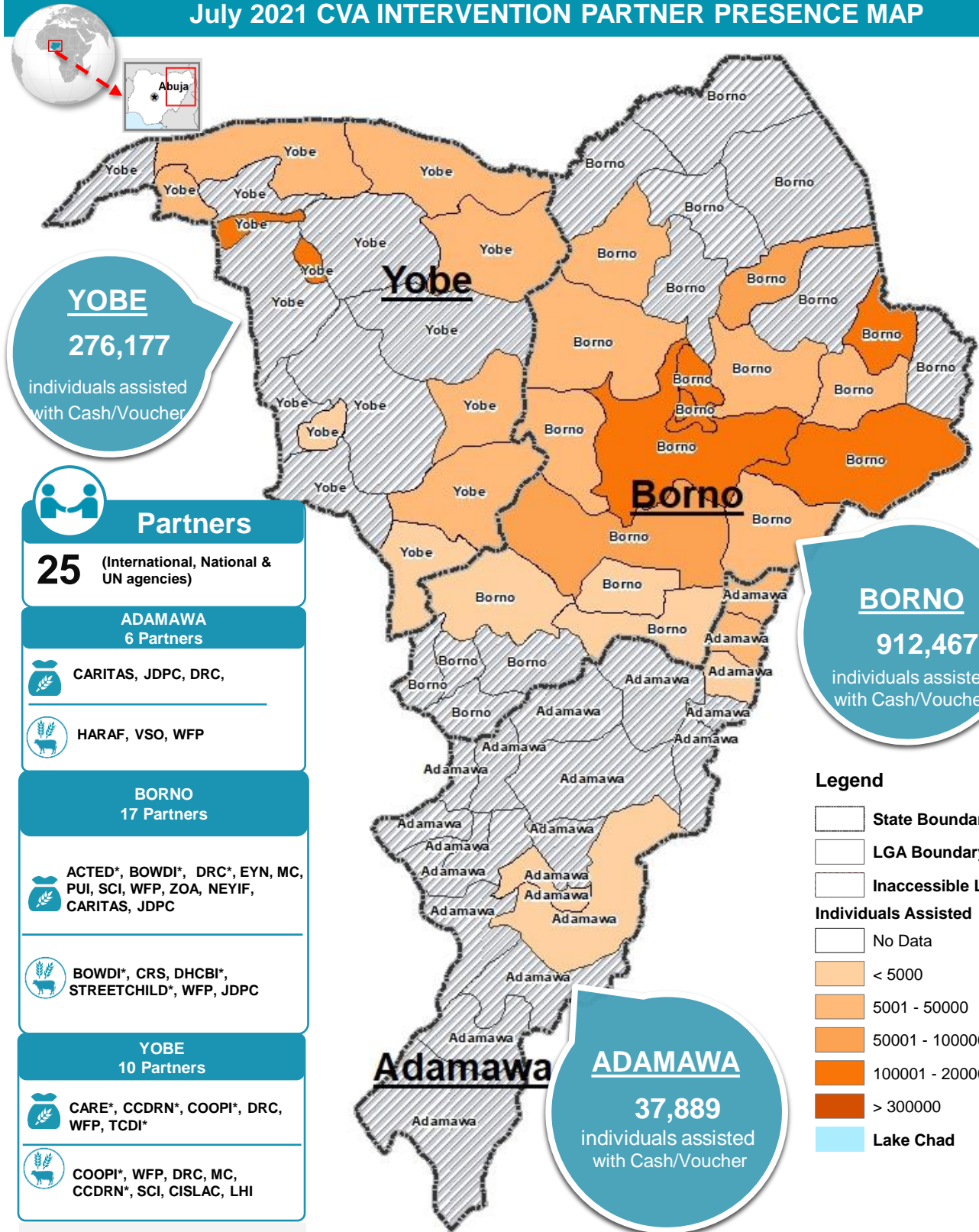
**Top 10 of the 30 LGAs with CVA in July 2021**



**PEOPLE ASSISTED**

MODALITY	RESTRICTION/People Assisted	CONDITIONALITY/People Assisted
Restricted	792,446 (65%)	190,189 (16%)
Unrestricted	372,580 (30%)	103,634 (84%)
Hybrid	61,507 (5%)	

**July 2021 CVA INTERVENTION PARTNER PRESENCE MAP**



**Partners**  
**25** (International, National & UN agencies)

**ADAMAWA**  
**6 Partners**

- CARITAS, JDPC, DRC,
- HARAF, VSO, WFP

**BORNO**  
**17 Partners**

- ACTED\*, BOWDI\*, DRC\*, EYN, MC, PUI, SCI, WFP, ZOA, NEYIF, CARITAS, JDPC
- BOWDI\*, CRS, DHCBI\*, STREETCHILD\*, WFP, JDPC

**YOBE**  
**10 Partners**

- CARE\*, CCDRN\*, COOPI\*, DRC, WFP, TCDI\*
- COOPI\*, WFP, DRC, MC, CCDRN\*, SCI, CISLAC, LHI

**Organization\*:** Partners who also implement activities WFP and/or FAO

- Food Assistance
- Agriculture & Livelihoods

**Legend**

- State Boundary
- LGA Boundary
- Inaccessible LGA
- Individuals Assisted
- No Data
- < 5000
- 5001 - 50000
- 50001 - 100000
- 100001 - 200000
- > 300000
- Lake Chad

Sector's online dashboard:

<http://fscluster.org/nigeria> **Nigeria, North East Food Security Sector Dashboard**

Production date: 30 August 2021  
Data sources: FSS 5Ws data for July 2021/FSS Partners  
Contact: [info.nigeria@fscluster.org](mailto:info.nigeria@fscluster.org) | Nigeria Food Security Sector

**Disclaimer:** This dashboard captures information available at the moment of production based on partners' reporting. The boundaries and names shown, and the designations used on this map do not imply official endorsement or acceptance by the UN.