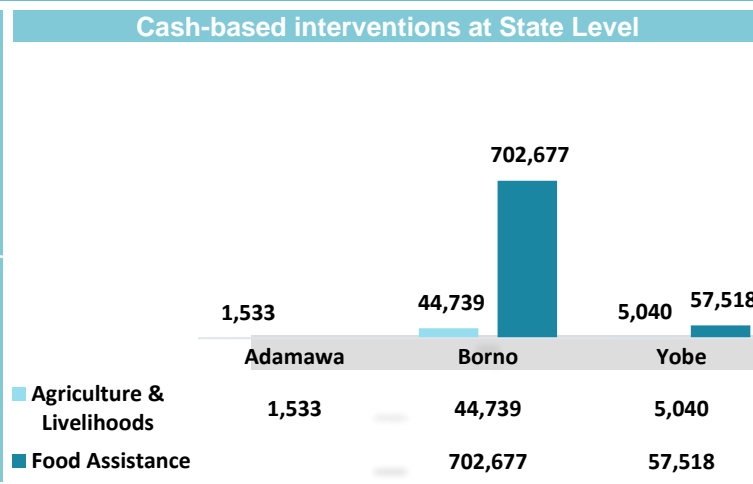
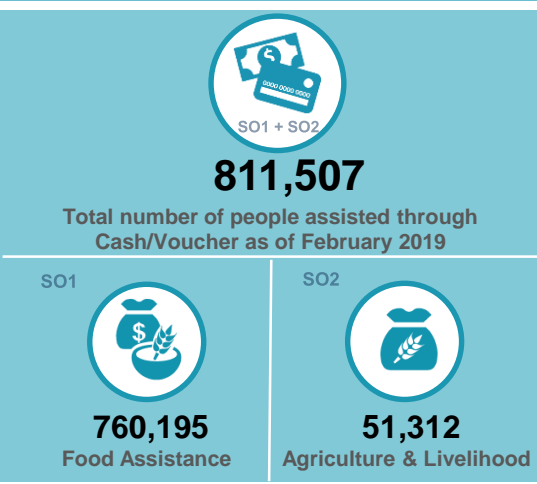
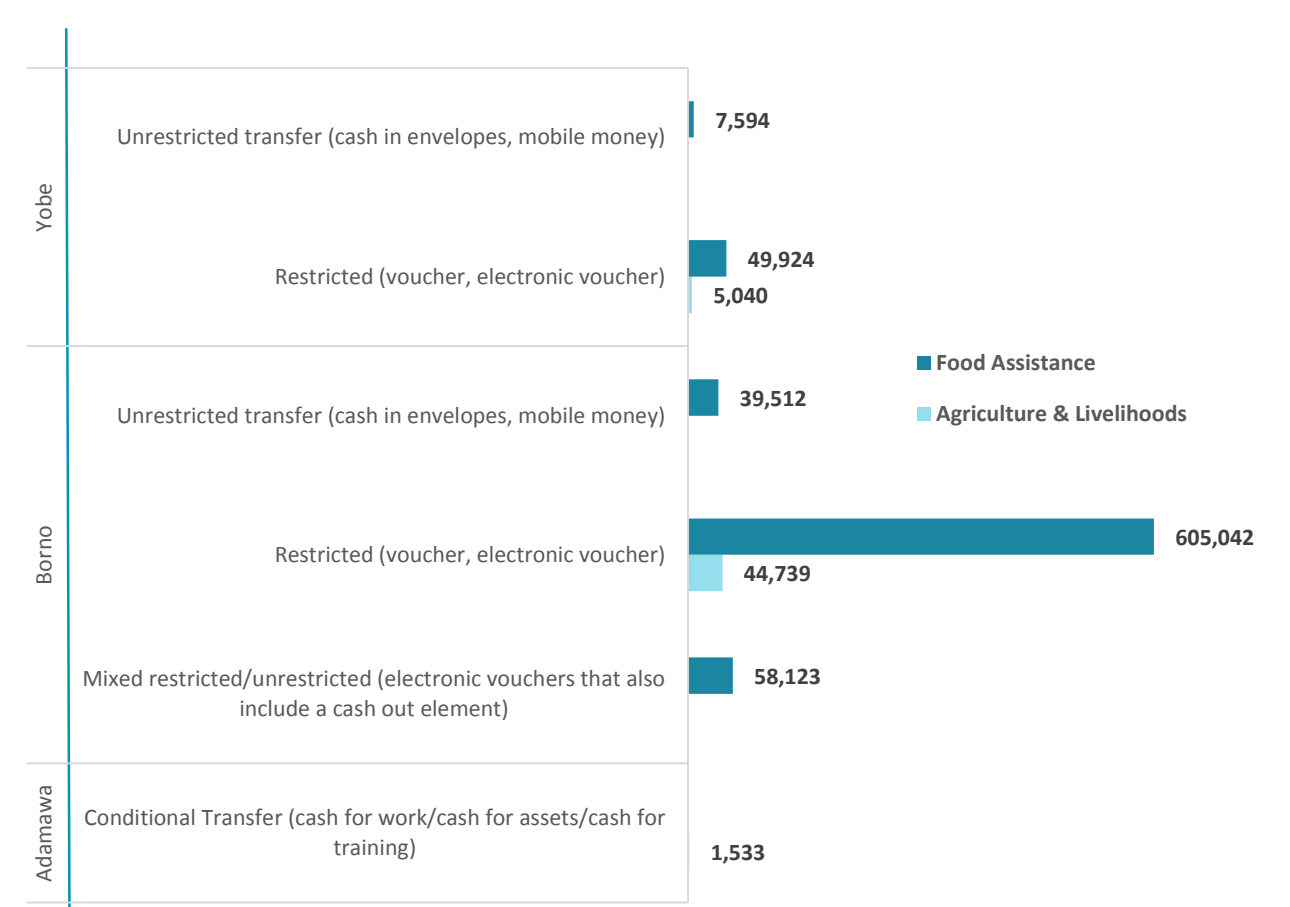


During February 2019, the Food Security Sector assisted **1,555,081** unique individuals of which **52%** were assisted through cash-based transfers including cash, mobile money, vouchers, electronic vouchers, and cash for work/assets/training. Of those assisted with cash transfer programmes, **92%** were for SO1 (Food Assistance) and **8%** were for SO2 (Agriculture and Livelihoods). As shown in the below graphs, Borno State remains to be where cash-based assistance is mainly provided.

KEY FACTS & FIGURES ON CASH RESPONSES – as of FEBRUARY 2019



Cash-based modalities used at State level



FEBRUARY 2019 CASH INTERVENTION PARTNER PRESENCE MAP

