

In December 2021, the Food Security Sector assisted 1,743,241 individuals with food assistance (SO1) and 1,623,887 individuals for agriculture & livelihoods (SO2), of whom 69% (850,834) and 31% (375,761) received assistance through Cash Voucher Assistance (CVA) for SO1 and SO2 respectively. Twenty-nine organizations, including national and international NGOs and UN agencies, applied various transfer delivery mechanisms, such as cash in hand, mobile money transfers, paper vouchers, and electronic vouchers. Borno state hosts the highest caseload, approximately 83% of the CVA beneficiaries, compared to 15% and 2% in Yobe and Adamawa states, respectively.

KEY FACTS & FIGURES ON CASH & VOUCHER ASSISTANCE – as of December 2021



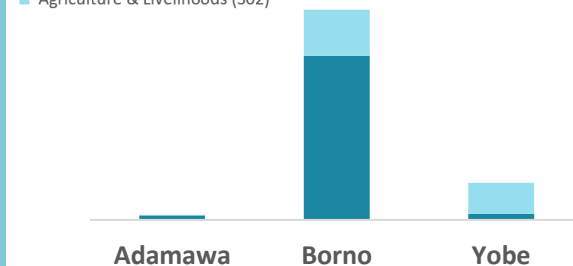
850,834
Food Assistance



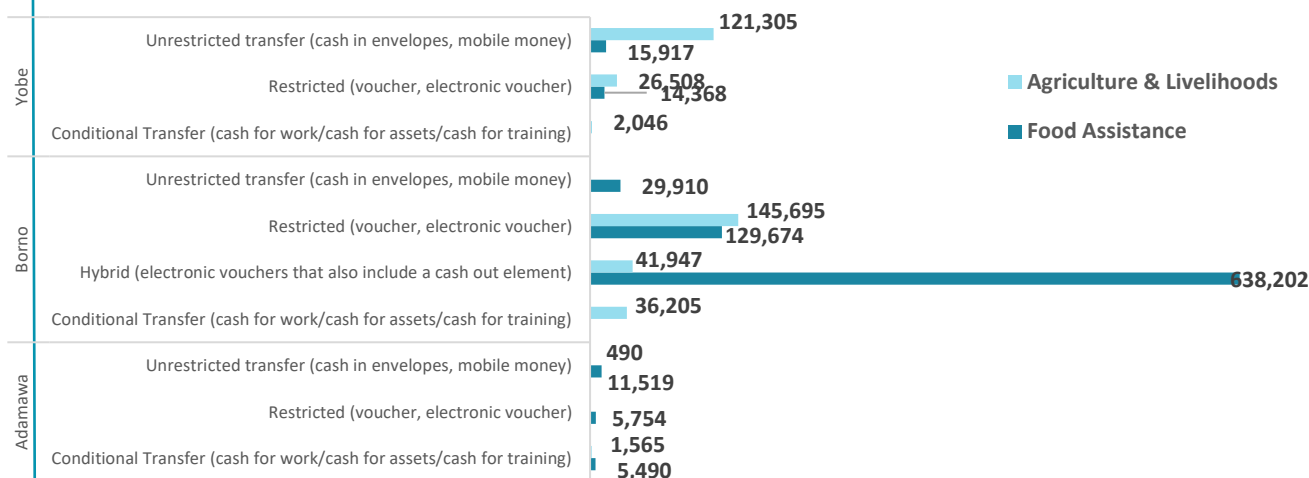
375,761
Agriculture & Livelihoods

Cash & Voucher Assistance at State Level

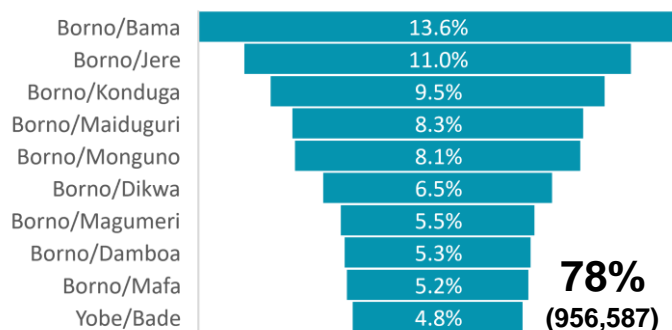
■ Food Assistance (SO1)
■ Agriculture & Livelihoods (SO2)



Cash & Voucher Assistance Modalities Used at State Level



Top 10 of the 30 LGAs with CVA in December 2021



78%
(956,587)

MODALITY | PEOPLE ASSISTED

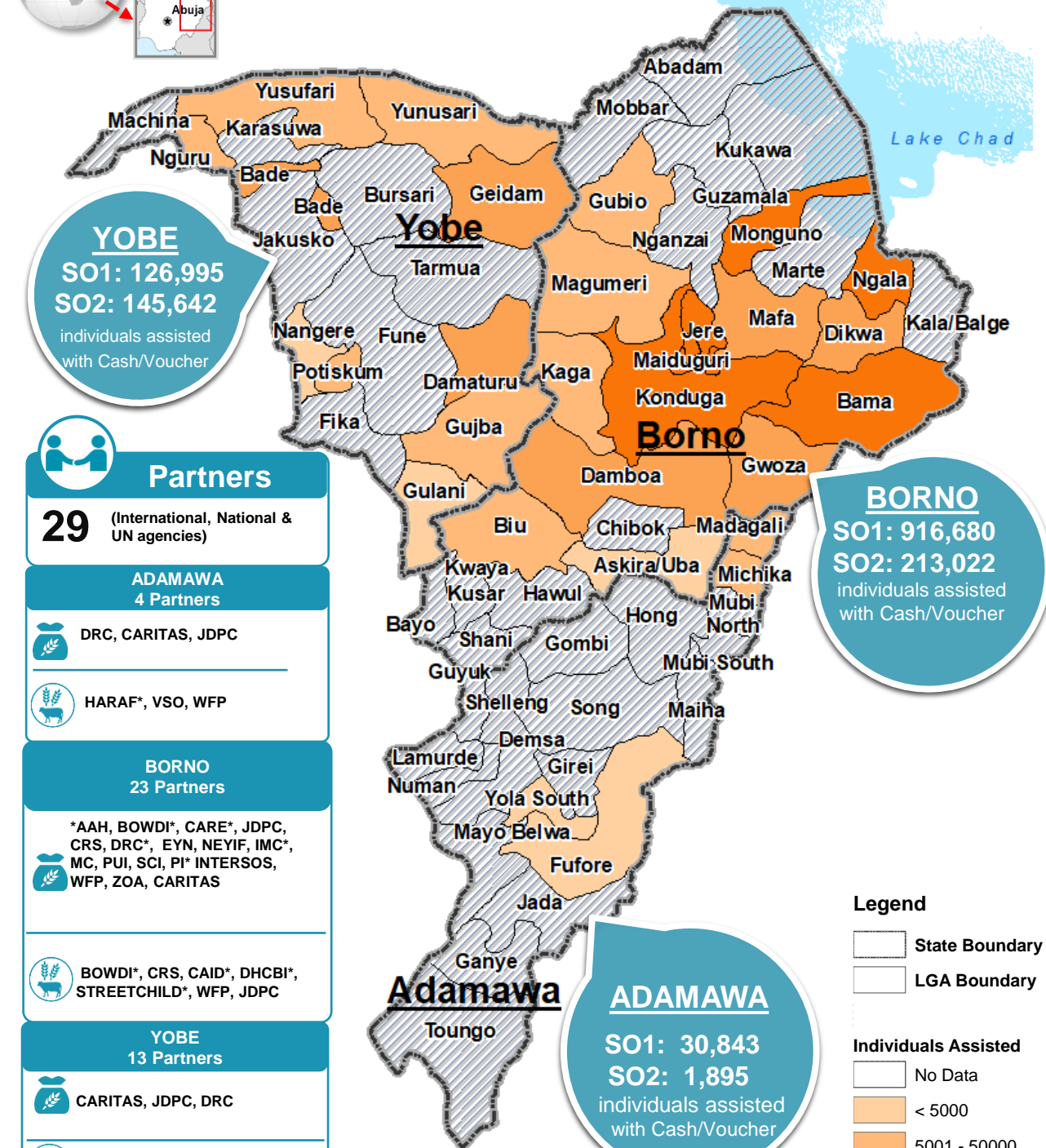
RESTRICTION/People Assisted

Restricted 733,869 (59.8%)
Unrestricted 462,816 (37.7%)
Hybrid 29,910 (2.4%)

CONDITIONALITY/People Assisted

Conditional 318,986 (26.0%)
Unconditional 907,609 (73.0%)

December 2021 CVA INTERVENTION PARTNER PRESENCE MAP



Partners

29 (International, National & UN agencies)

ADAMAWA

4 Partners



DRC, CARITAS, JDPC



HARAF*, VSO, WFP

BORNO

23 Partners



AAH, BOWDI, CARE*, JDPC, CRS, DRC*, EYN, NEYIF, IMC*, MC, PUI, SCI, PI* INTERSOS, WFP, ZOA, CARITAS



BOWDI*, CRS, CAID*, DHCBI*, STREETCHILD*, WFP, JDPC

YOBE

13 Partners



CARITAS, JDPC, DRC



AAH, CCDRN*, COOPI*, DRC, IA, CISLAC, LHI, WFP, MC, SCI

Organization*: Partners who also implement activities WFP and/or FAO



Food Assistance



Agriculture & Livelihoods

Legend

State Boundary
LGA Boundary

Individuals Assisted

No Data
< 5000
5001 - 50000
50001 - 100000
100001 - 200000
> 300000
Lake Chad

Sector's online dashboard:

<http://fscluster.org/nigeria> [Nigeria, North East Food Security Sector Dashboard](http://fscluster.org/nigeria)

Production date: 30 December 2021

Data sources: FSS 5Ws data for December 2021/FSS Partners

Contact: info.nigeria@fscluster.org | Nigeria Food Security Sector

Disclaimer: This dashboard captures information available at the moment of production based on partners' reporting. The boundaries and names shown, and the designations used on this map do not imply official endorsement or acceptance by the UN.