

In December 2020, the Food Security Sector assisted **4,201,267** unique individuals, of whom **52% (2,200,926)** received assistance through Cash Voucher Assistance (CVA). Thirty-seven organizations, including national and international NGOs and UN agencies, applied various transfer delivery mechanisms, such as cash in hand, mobile money transfers, paper vouchers and electronic vouchers. Of those assisted with CVA, **56% (1,231,740)** were under SO1 (Food Assistance) while **44% (969,186)** under SO2 (Agriculture and Livelihoods). Borno state hosts the highest caseload, approximately 70% of the CVA beneficiaries, compared to 27% and 3% in Yobe and Adamawa states, respectively.

**KEY FACTS & FIGURES ON CASH & VOUCHER ASSISTANCE – as of December 2020**



**2,200,926**

Total number of people assisted through Cash/Voucher as of December 2020



**1,231,740**

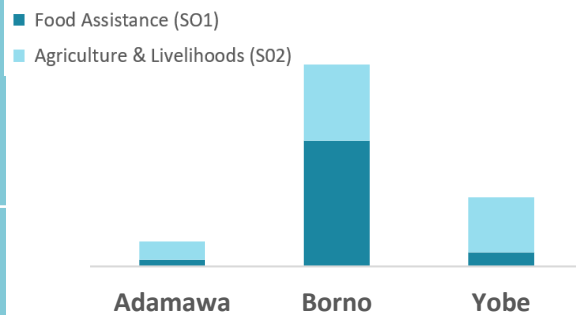
Food Assistance



**969,186**

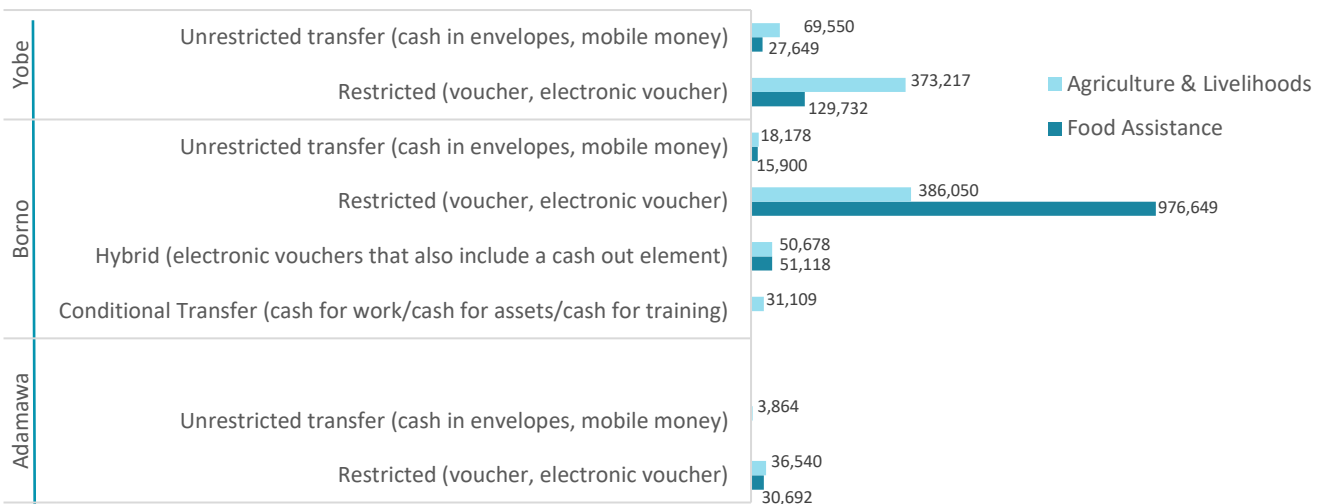
Agriculture & Livelihood

**Cash & Voucher Assistance at State Level**

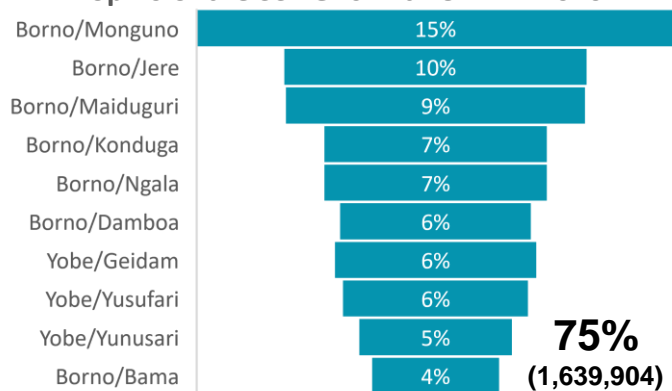


	Adamawa	Borno	Yobe
SO1	30,692	1,043,667	157,381
SO2	40,404	486,015	442,767

**Cash & Voucher Assistance Modalities Used at State Level**



**Top 10 of the 33 LGAs with CVA in 2020**

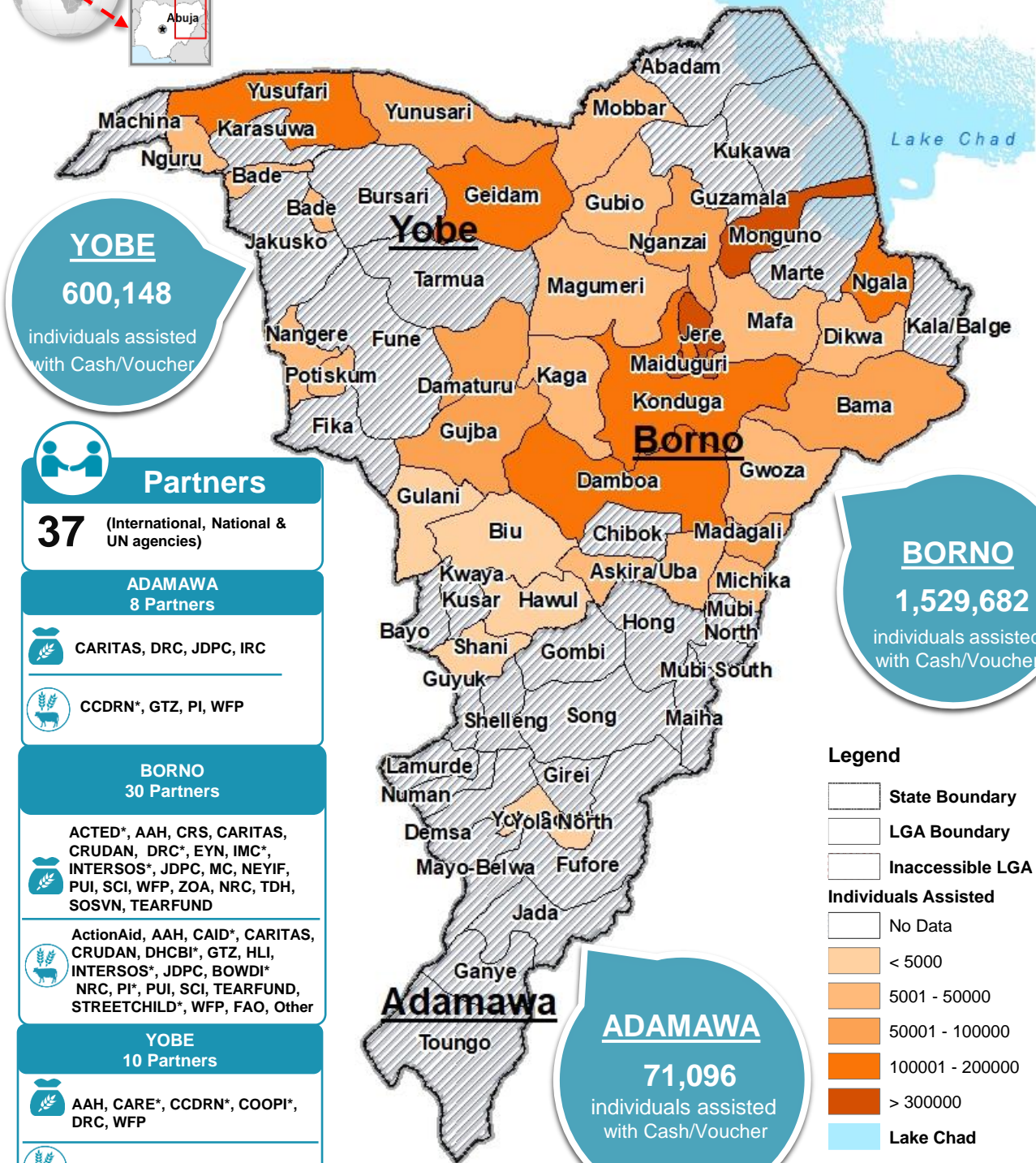


**PEOPLE ASSISTED**

RESTRICTION/People Assisted	Count	Percentage
Restricted	1,715,501	(78%)
Unrestricted	376,629	(17%)
Hybrid	108,796	(5%)

CONDITIONALITY/People Assisted	Count	Percentage
Conditional	900,355	(41%)
Unconditional	1,300,571	(59%)

**DECEMBER 2020 CVA INTERVENTION PARTNER PRESENCE MAP**



**Partners**

**37** (International, National & UN agencies)

**ADAMAWA**

8 Partners

CARITAS, DRC, JDPC, IRC

CCDRN\*, GTZ, PI, WFP

**BORNO**

30 Partners

ACTED\*, AAH, CRS, CARITAS, CRUDAN, DRC\*, EYN, IMC\*, INTERSOS\*, JDPC, MC, NEYIF, PUI, SCI, WFP, ZOA, NRC, TDH, SOSVN, TEARFUND

ActionAid, AAH, CAID\*, CARITAS, CRUDAN, DHCBI\*, GTZ, HLI, INTERSOS\*, JDPC, BOWDI\*, NRC, PI\*, PUI, SCI, TEARFUND, STREETCHILD\*, WFP, FAO, Other

**YOBE**

10 Partners

AAH, CARE\*, CCDRN\*, COOPI\*, DRC, WFP

CARE\*, CCDRN\*, CISLAC, DRC COOPI\*, IA, SCI, TIWOD, WFP

Organization\*: Partners who also implement activities WFP and/or FAO

Food Assistance

Agriculture & Livelihoods

Sector's online dashboard:

<http://fscluster.org/nigeria> <https://public.tableau.com/profile/ng.food.security.sector#1/vizhome/shared/S4CCXRC39>

Production date: 30 January 2020  
Data sources: FSS 5Ws data for December 2020/FSS Partners  
Contact: [info.nigeria@fscluster.org](mailto:info.nigeria@fscluster.org) | Nigeria Food Security Sector

Disclaimer: This dashboard captures information available as at the moment of production based on partners' reporting. The boundaries and names shown, and the designations used on this map do not imply official endorsement or acceptance by the UN.