

In April 2020, the Food Security Sector assisted **2,180,757** unique individuals, of whom **58% (1,266,379)** received assistance through Cash Voucher Assistance (CVA). Twenty-three organizations, including national and international NGOs and UN agencies, applied various transfer delivery mechanisms, such as cash in hand, mobile money transfers, paper vouchers and electronic vouchers. Of those assisted with CVA, **77% (971,793)** were under SO1 (Food Assistance) while **23% (294,586)** under SO2 (Agriculture and Livelihoods). Borno state hosts the highest caseload, approximately 71% of the CVA beneficiaries, compared to 27% and 2% in Yobe and Adamawa states, respectively.

KEY FACTS & FIGURES ON CASH & VOUCHER ASSISTANCE – as of April 2020



1,266,379

Total number of people assisted through Cash/Voucher as of April 2020



971,793

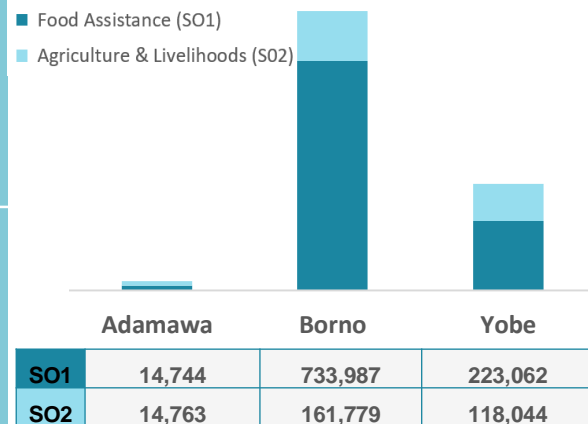
Food Assistance



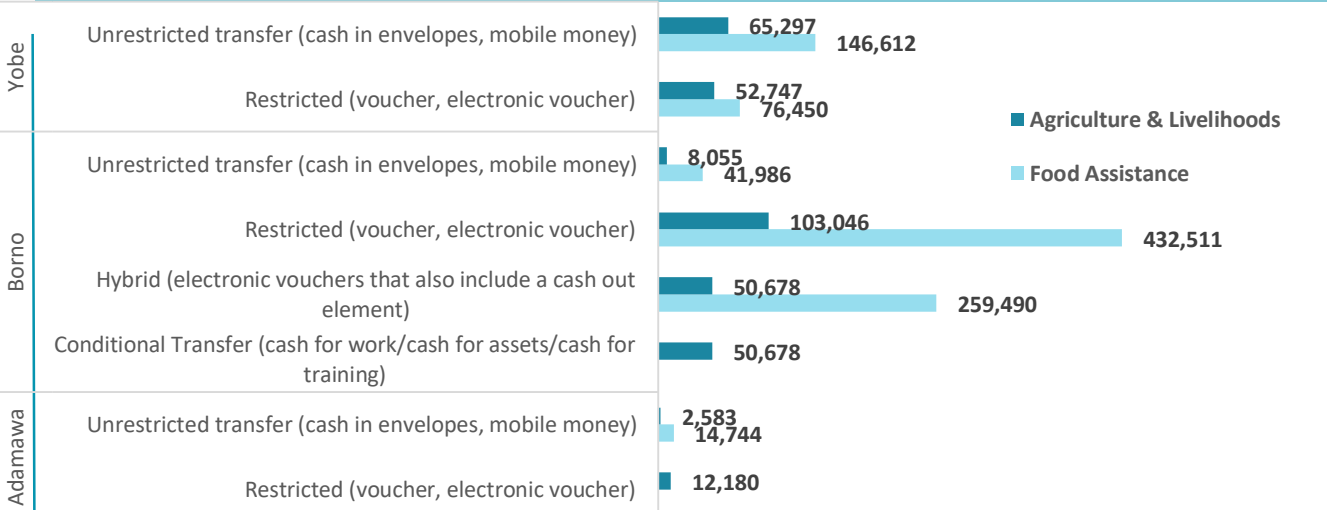
294,586

Agriculture & Livelihood

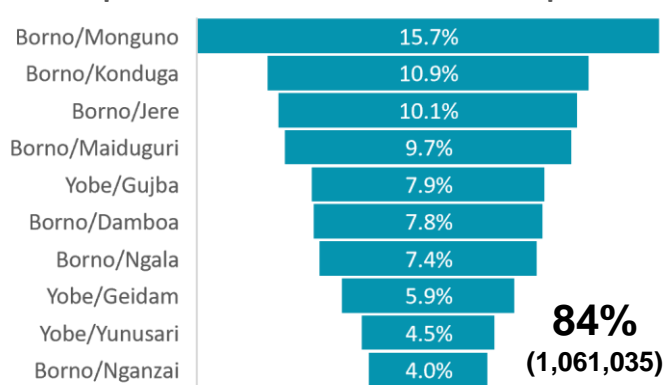
Cash & Voucher Assistance at State Level



Cash & Voucher Assistance Modalities Used at State Level



Top 10 of the 27 LGAs with CVA in April 2020



84%
(1,061,035)

MODALITY | PEOPLE ASSISTED

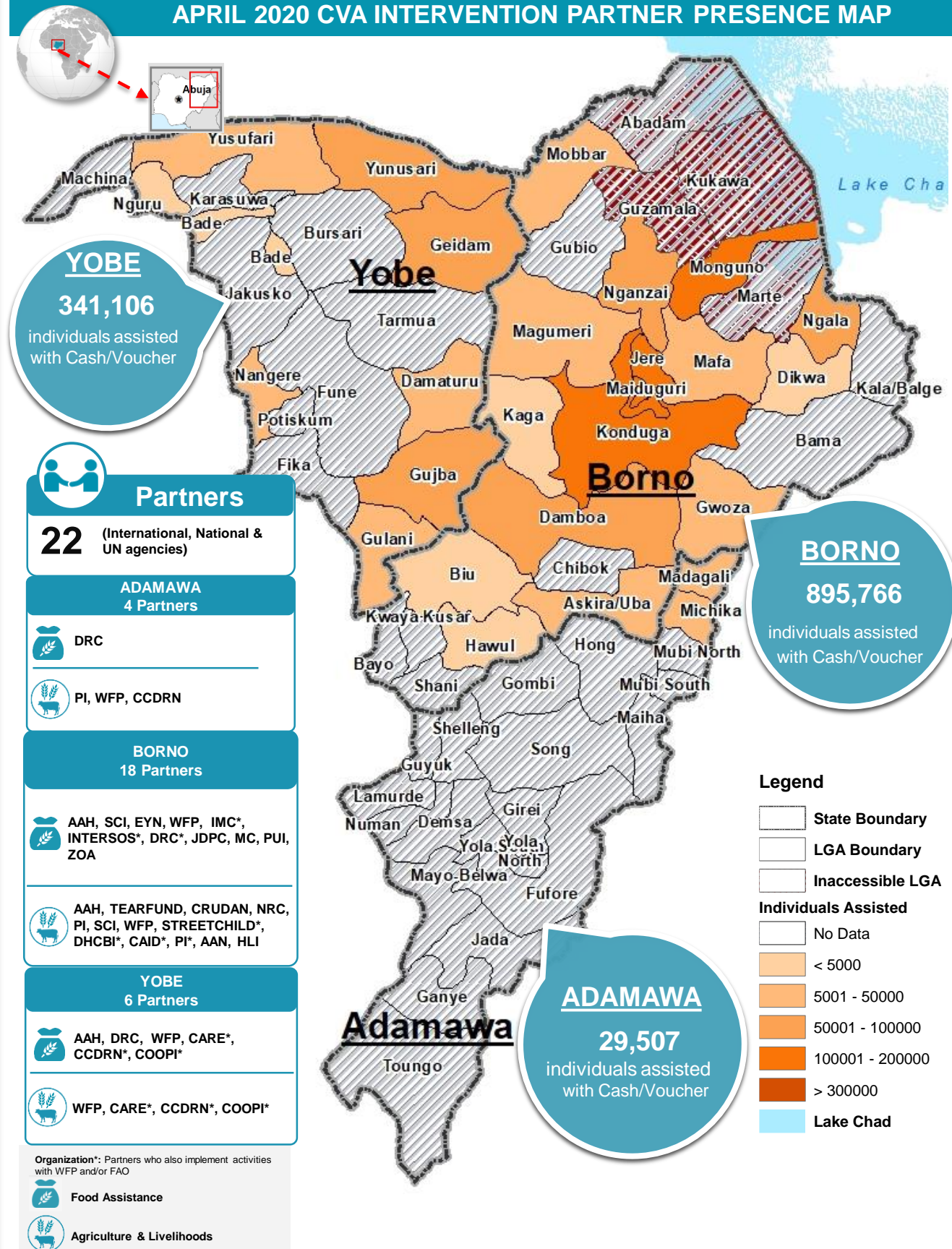
RESTRICTION/People Assisted

Restricted	847,468 (67%)
Unrestricted	279,477 (22%)
Hybrid	139,434 (11%)

CONDITIONALITY/People Assisted

Conditional	199,116 (16%)
Unconditional	1,067,263 (84%)

APRIL 2020 CVA INTERVENTION PARTNER PRESENCE MAP



YOBE
341,106
individuals assisted with Cash/Voucher

BORNO
895,766
individuals assisted with Cash/Voucher

ADAMAWA
29,507
individuals assisted with Cash/Voucher

Partners
22 (International, National & UN agencies)

ADAMAWA
4 Partners
DRC
PI, WFP, CCDRN

BORNO
18 Partners
AAH, SCI, EYN, WFP, IMC*, INTERSOS*, DRC*, JDPC, MC, PUI, ZOA

YOBE
6 Partners
AAH, DRC, WFP, CARE*, CCDRN*, COOPI*
WFP, CARE*, CCDRN*, COOPI*

Organization*: Partners who also implement activities with WFP and/or FAO
Food Assistance
Agriculture & Livelihoods