

As of October 2018, the Food Security Sector assisted **3,178,753** unique individuals of which **41%** were assisted through cash-based transfers including cash, mobile money, vouchers, electronic vouchers, and cash for work/assets/training. Of those assisted with cash transfer programmes, 66% were for SO1 (Food Assistance) and 34% were for SO2 (Agriculture and Livelihoods). As shown in the below graphs, Borno State remains to be where cash-based assistance is mainly provided.

## OCTOBER 2018 CASH INTERVENTION PARTNER PRESENCE MAP

### KEY FACTS & FIGURES ON CASH RESPONSES – as of October 2018



**1,300,699**

Total number of people assisted through Cash/Voucher as of October 2018

SO1



**852,516**

Food Assistance

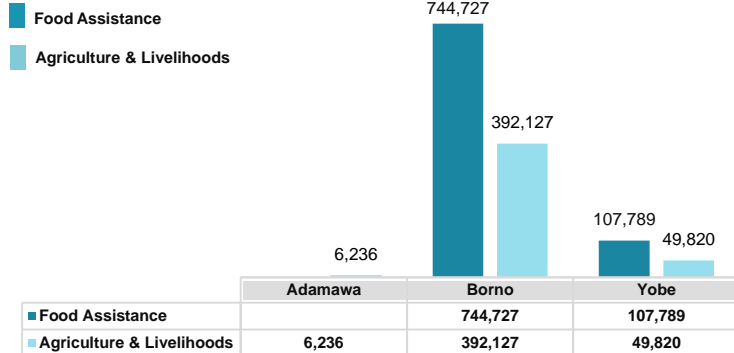
SO2



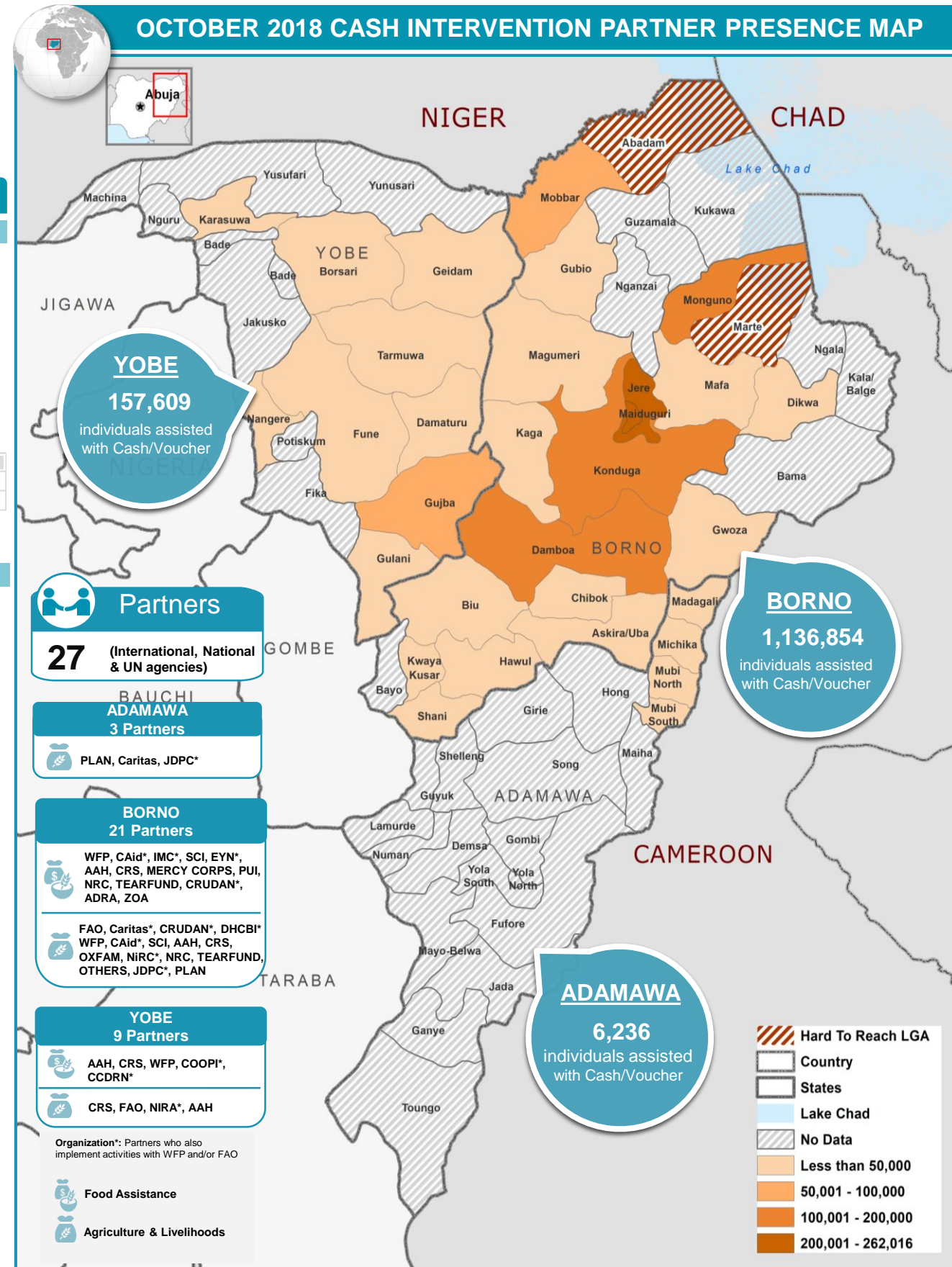
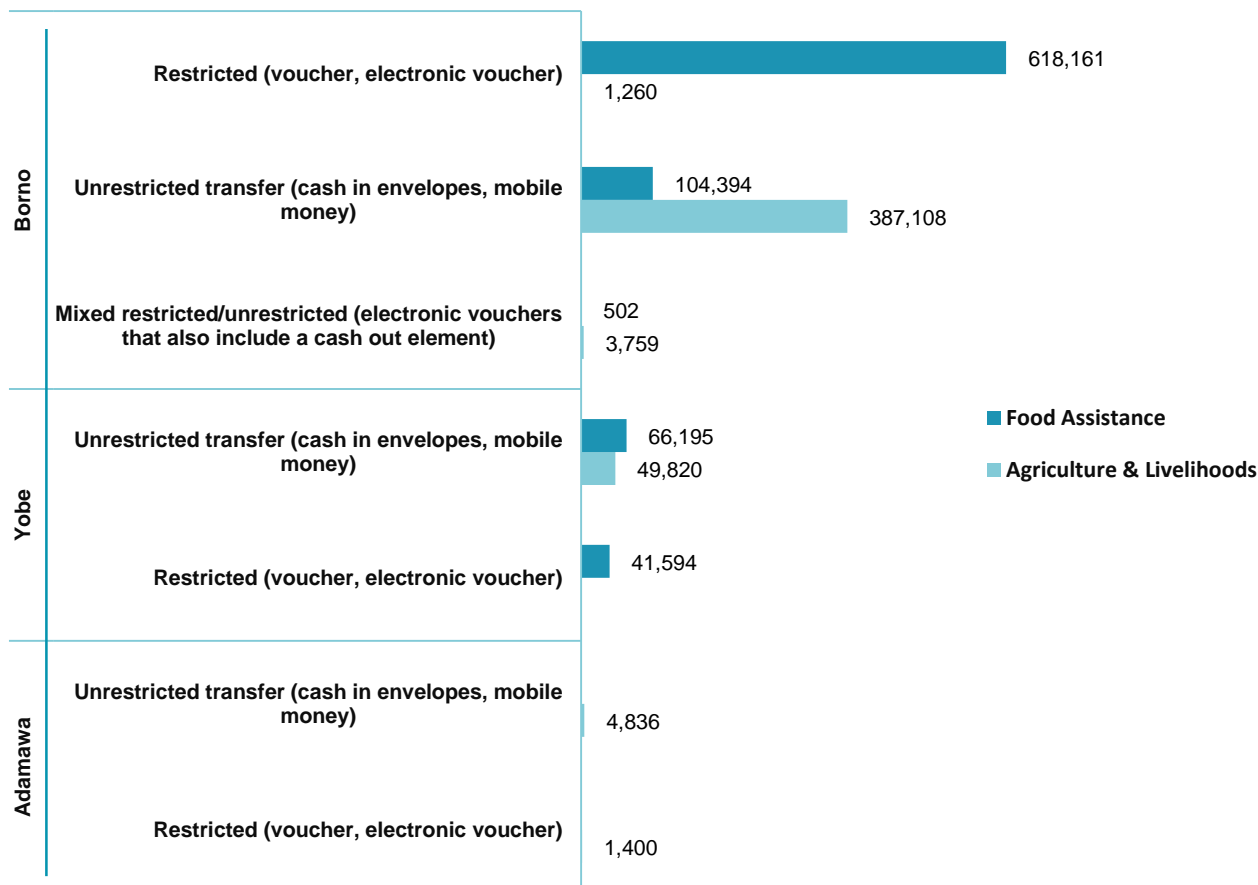
**448,183**

Agriculture & Livelihood

### Cash-based interventions at State Level



### Cash-based modalities used at State level



Sector's online dashboard:

<http://fscluster.org/nigeria>

<https://public.tableau.com/profile/ng.food.security.sector#1/vizhome/shared/S4CCXRC39>

Production date: 26-November-2018

Data sources: FSS 5Ws data for October 2018/FSS Partners

Contact: [info.nigeria@fscluster.org](mailto:info.nigeria@fscluster.org) | Nigeria Food Security Sector

**Disclaimer:** This dashboard captures information available at the moment of production based on partners' reporting. The boundaries and names shown and the designations used on this map do not imply official endorsement or acceptance by the UN.