

# Food Security Cluster Coordination Meeting Middle Shabelle Region

7-June-2023

# Agenda

1. Introduction and Opening Remarks
2. Review of Action Points from Previous Meeting
3. Weather Forecast and Floods Update – FAO-SWALIM
4. Partner updates (Flood response plan, challenges, and gaps)
5. AOB
  - Jowhar Floods Joint Assessment

# Introduction and Opening Remarks

# Review of Action Points from Previous Meeting

- FSC to share presentation by Islamic Relief Somalia - **DONE**
- FSC to share FAO SWALIM's presentation. - **DONE**
- FSC to send flood response matrix to partners for data collection. - **DONE**

Weather Forecast and  
Flood Update – FAO  
SWALIM



Food and Agriculture Organization  
of the United Nations

# Weather Review, Forecast and Flood Update for Middle Shabelle Region

*07 June 2023*

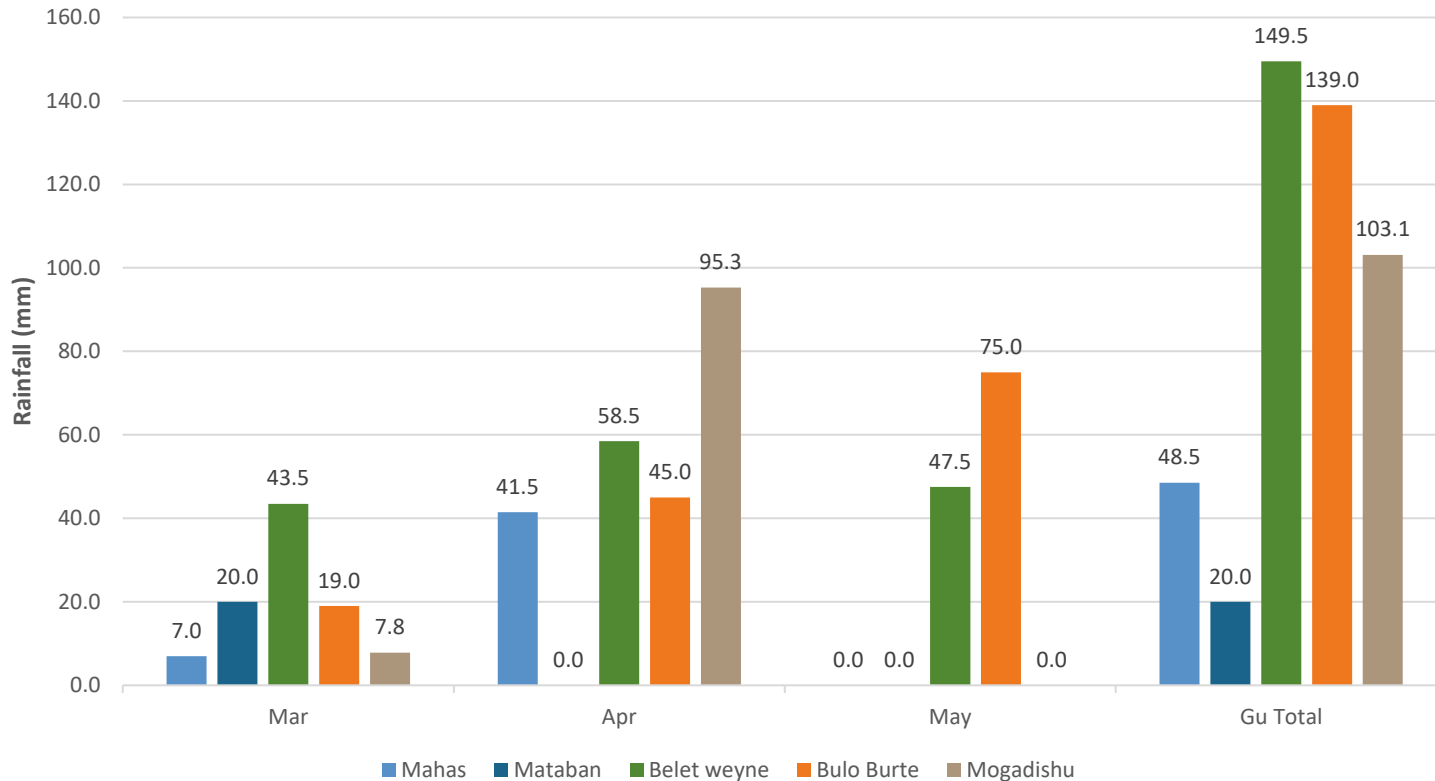
---

Bethwel K. Mutai, Saeed Mohamed & Omar Sabrie Olad

FAO/SWALIM

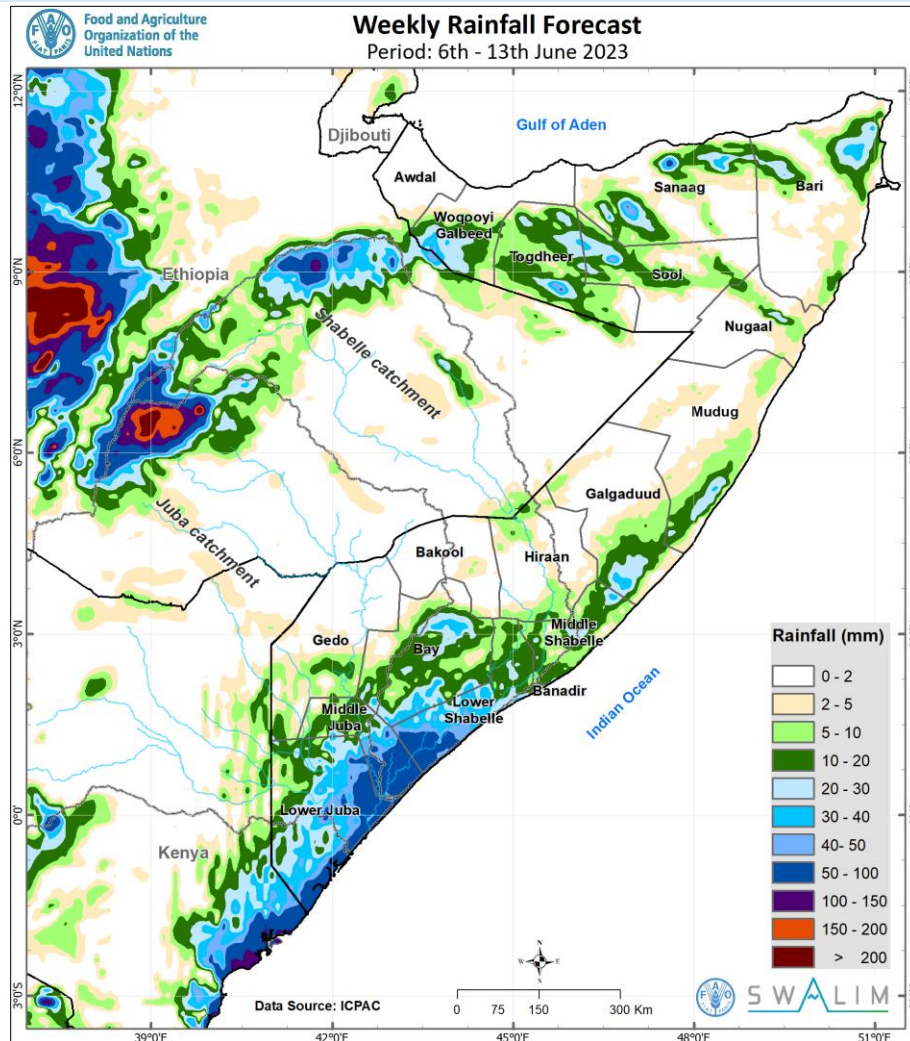
## Past and Present Weather

Monthly and Seasonal (2023) Rainfall over Stations in Hirshabelle and Banadir



- No rain was received in Mataban station in April
- Only BW and BB received rainfall in May 2023
- No rainfall has been received in the June 2023
- The Gu seasonal rainfall totals over Hirshabelle and Banadir are:
  - Belet Weyne (149.5 mm)
  - Bulo Burte (139.0 mm)
  - Mahas (48.5 mm)
  - Mataban (20.0 mm)
  - Mogadishu (103.1 mm)

## Weather Forecast for 6 – 13 2023

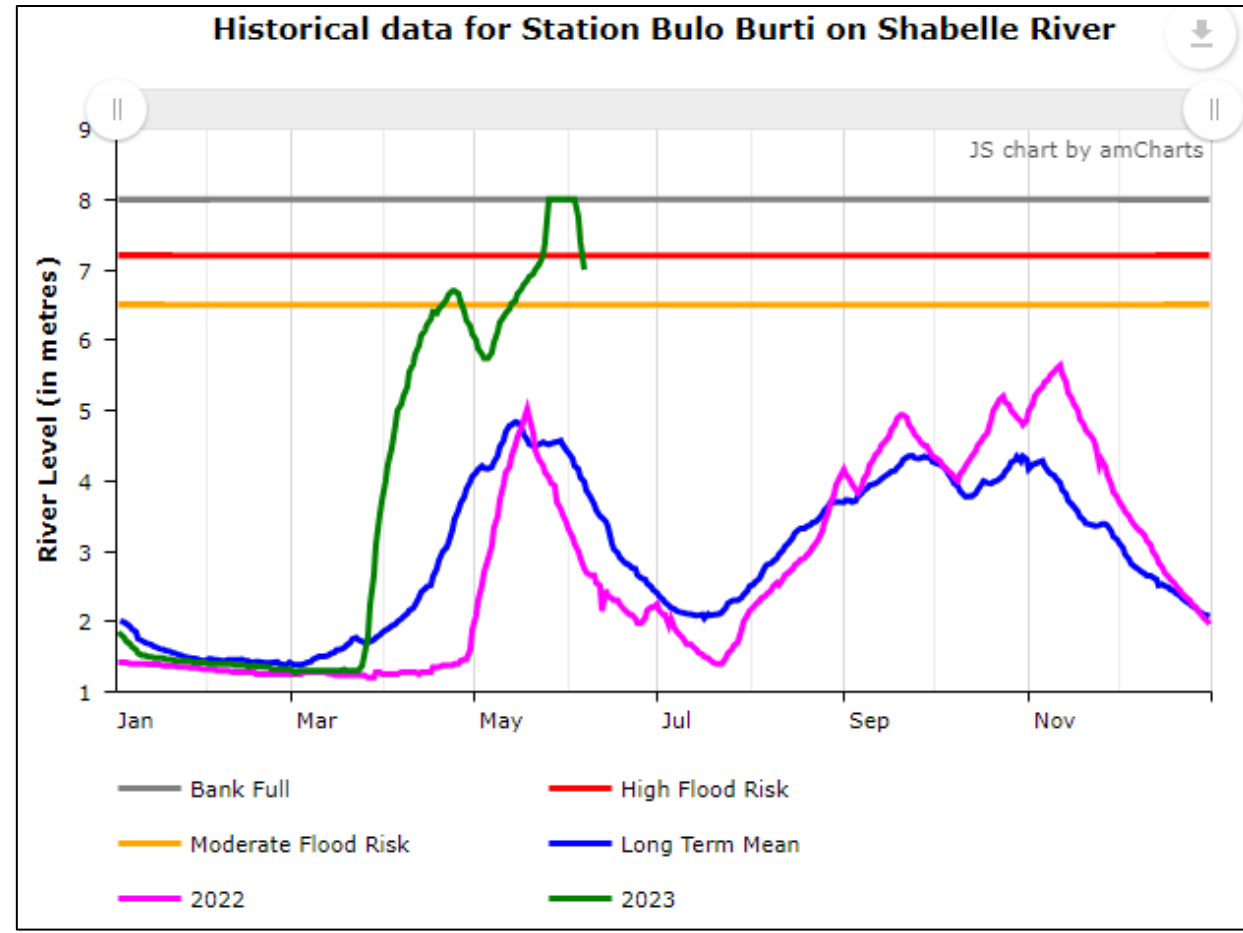
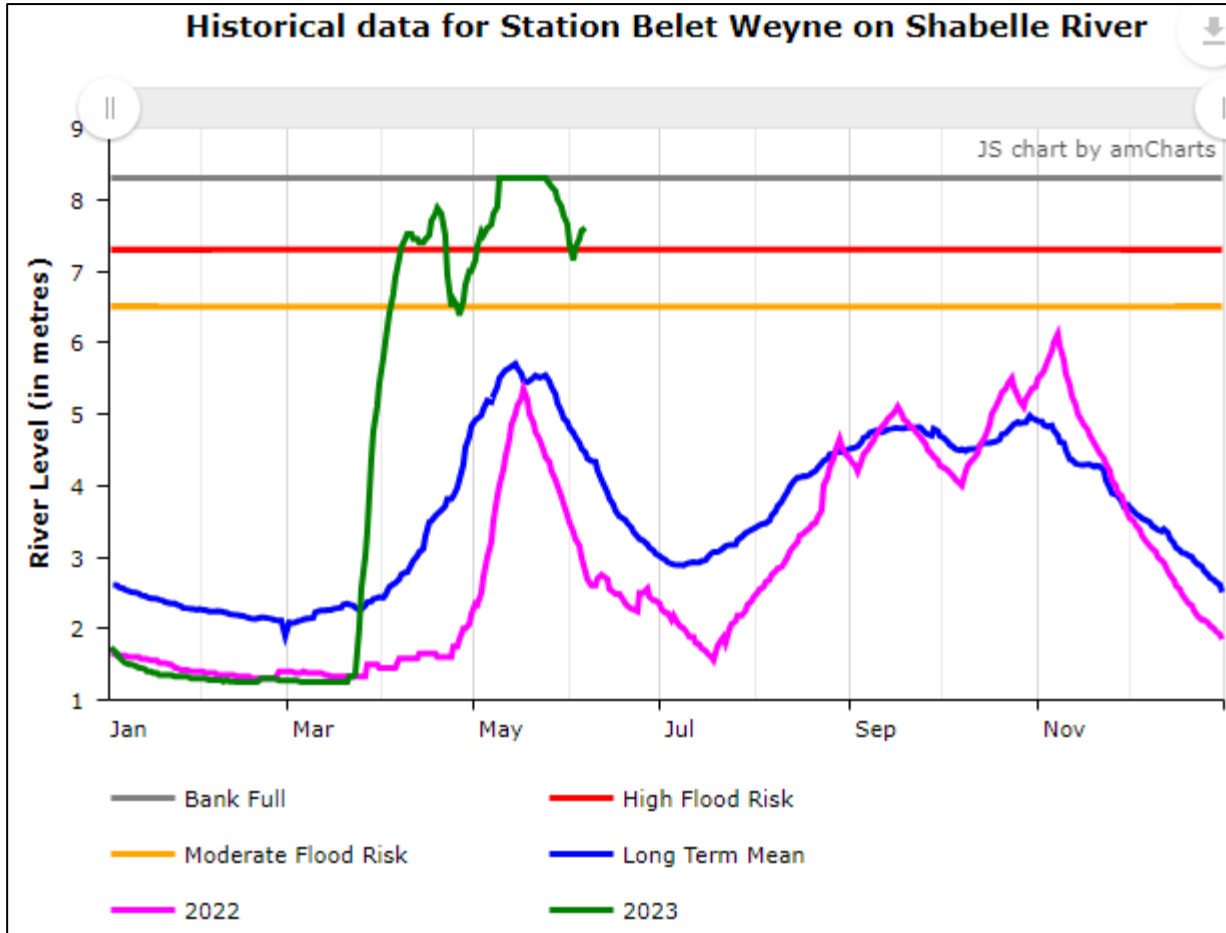


- The rainfall forecast for the last week (31<sup>st</sup> May – 7<sup>th</sup> June) indicated light rains of less than 30 mm over Belet Weyne and Jalalaqsi districts in Hiraaan region
- Moderate rainfall expected over southern coastal regions with light rains likely over some areas in the north and dry conditions elsewhere during the forecast period (6<sup>th</sup> to 13<sup>th</sup> June 2023)
- Dry conditions are forecast over much of Hiraaan (light rains of less than 20 mm over northern parts of Belet Weyne District)
- Light rains of about 30 mm are expected over some areas in Middle Shabelle region





# Shabele River Flood Update: @ Belet Weyne and @ Bulo Burte





## Shabele River Flood Update: WARNING

- After being at bankful level for more than a week with reported flooding impacts, the river level at Bulu Burte has dropped slightly to 6.80 today (7th June)
- A flood wave that had been reported at Bur Ukur in Ethiopia on 30<sup>th</sup> May, about 45 km upstream of BW led to a rise in the river levels afterwards with no sign of flooding
- A flood wave that was sighted at Ba'aad village 18km north of Belet Weyne on 4th June has led to a slight increase in river level to 7.60 m today (7th June) at Belet Weyne with minimal chance of flooding
- Such downstream flows are likely to sustain the river levels at Belet Weyne and Bulu Burte which are still within the high flood risk levels. Continuous monitoring of rainfall over Shabelle River catchment in Ethiopian Highlands is therefore crucial
- It is expected that the high river levels at Bulu Burte and Jalalaqsi will be transmitted to Jowhar and eventually to Balcad in the coming days. However, the presence of two open unrehabilitated canals and breakages between jalalaqsi and Jowhar (near the tarmac road) opened by the community for irrigation over the agropastoral areas over WanlaWeyne will lead to flood water extraction thereby lessening the likelihood of flooding over Jowhar
- Therefore, a MODERATE-RISK FLOOD WARNING is foreseen over the next one week for Jowhar and the adjacent areas.



## Shabele River Flood Update: TAKING EARLY ACTION SAVES LIVES

- The residents of the recently flooded areas in Belet Weyne, Bulo Burte and Jalalaqsi should take precautions as they consider moving back to their homes
- They need to ascertain the strength of the housing structures, latrines, etc which may have been weakened by the flood waters
- They also need to ensure that they consume clean treated water as contamination is likely to have occurred during flooding.
- Residents of Belet Weyne, Bulo Burte and Jalalaqsi and Jowhar towns and surrounding areas should also be on the lookout for potential flooding and are strongly recommended to stay informed through regular bulletin updates at specified times, monitor through radio, television, and internet for flood warnings.

## Impacts of Past and Forecast Weather



Generally, light rains to dry conditions are expected in Hiraan, with light rains forecast over Shabelle River catchment in Ethiopian highlands



Although Shabelle River at BW and BB are still above high and moderate flood risk level, respectively, the levels are expected to stabilize below moderate flood risk levels in the coming days given the above forecast light rains to dry conditions



Although the expected isolated light rains over isolated areas in Hiraan will lead to partial substantial recharge of surface water sources, high temperatures will lead to evapotranspiration thereby reducing the soil moisture



Depending on the length of the dry conditions, low soil moisture may affect the regenerated vegetation which is important for human and livestock survival



The light rains and dry conditions have implications on the management of crops at various vegetative stages



Food and Agriculture Organization  
of the United Nations

# Mahadsanid! Thank You



[www.faoswalim.org](http://www.faoswalim.org)

Partner updates (Flood  
response plan, challenges  
and gaps)

- **Jowhar Floods Joint Assessment** – OCHA has informed on the need to have a joint assessment to better understand the needs and impact of floods in Jowhar area. Partners present in Jowhar and Middle Shabelle are encouraged to participate in this assessment and the timeline will be shared once confirmed.

## Next Meetings

- **Hiran Regional RCM: 4th July 2023 (2:00PM-3:30PM)**
- **Middle Shabelle RCM: 5th July 2023 (10:00AM-11:30AM)**
- **Hirshabelle SCM: 13th June 2023 (10:00AM-11:30AM)**

THANK YOU

