

Food Security Cluster Coordination Meeting Middle Shabelle Region

5-April-2023

Agenda

1. Introduction and Opening Remarks
2. FSC Partner presence in Middle Shabelle
3. Partner updates (Flood preparedness, challenges and gaps)
4. Flood alert updates in Middle Shabelle – FAO SWALIM
5. AOB

FSC Partner presence in Middle Shabelle

Region	District	Reporting organization	Implementing partner
Middle Shabelle	Balcad	MC	MC Mercy Corps
Middle Shabelle	Balcad	WFP	IVDO Isse Voluntary Development Organization
Middle Shabelle	Balcad	WFP	ORDO Onkod Relief and Development Organization
Middle Shabelle	Balcad	WFP	SAACID
Middle Shabelle	Cadale	WFP	ORDO Onkod Relief and Development Organization
Middle Shabelle	Jowhar	WFP	ORDO Onkod Relief and Development Organization
Middle Shabelle	Jowhar	WFP	SAACID
Middle Shabelle	Cadale	WFP	SAACID
Middle Shabelle	Jowhar	QC	

Partner updates (Flood
preparedness, challenges
and gaps)

Flood alert updates in
Middle Shabelle – FAO
SWALIM



Food and Agriculture Organization
of the United Nations

Rainfall and Flood Update in Middle Shabelle

05 APRIL 2023

Mohamed Saeed – Water Resources Officer

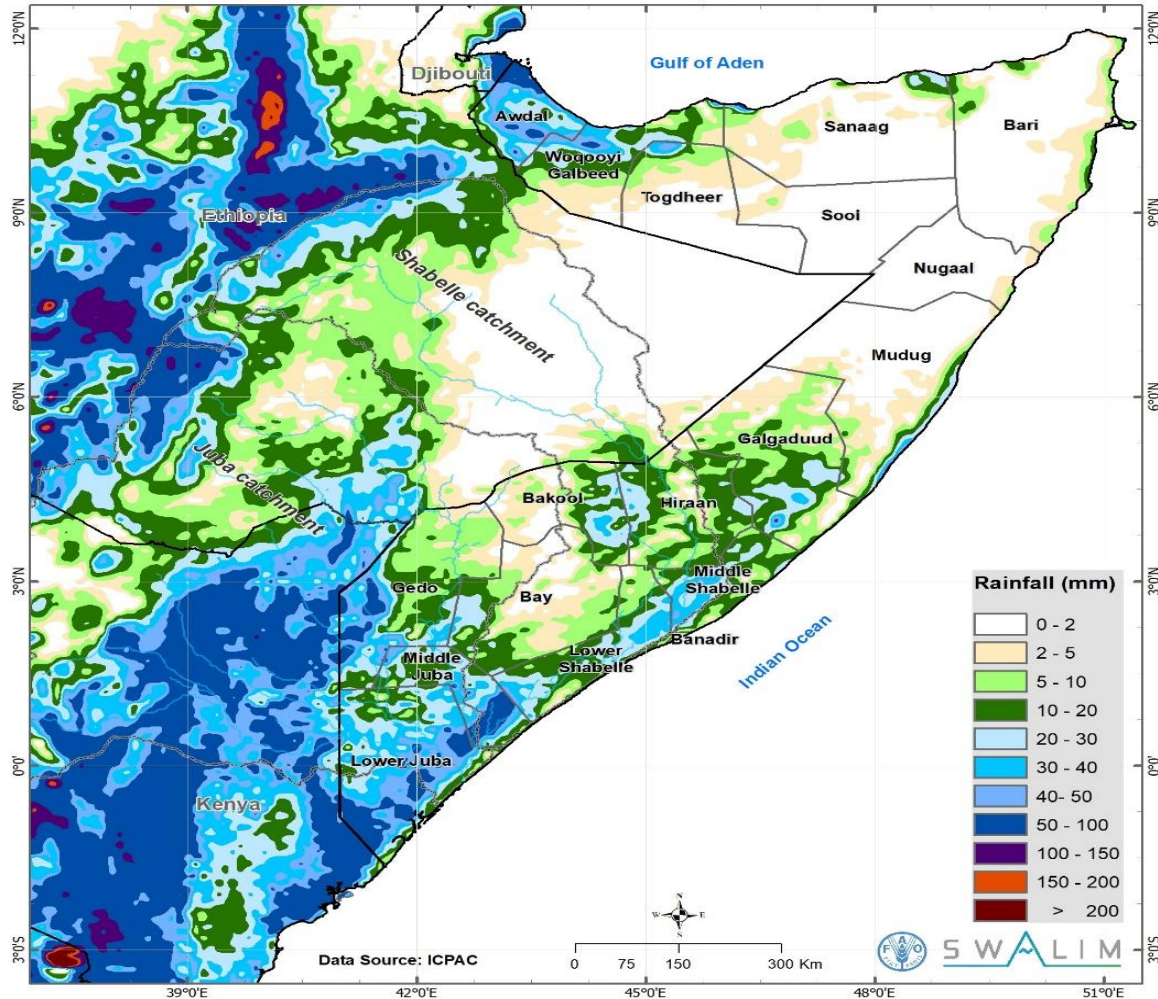
Past Weather and Next Week Forecast



Food and Agriculture
Organization of the
United Nations

Weekly Rainfall Forecast

Period: 4th to 11th April 2023



Last Week Weather:

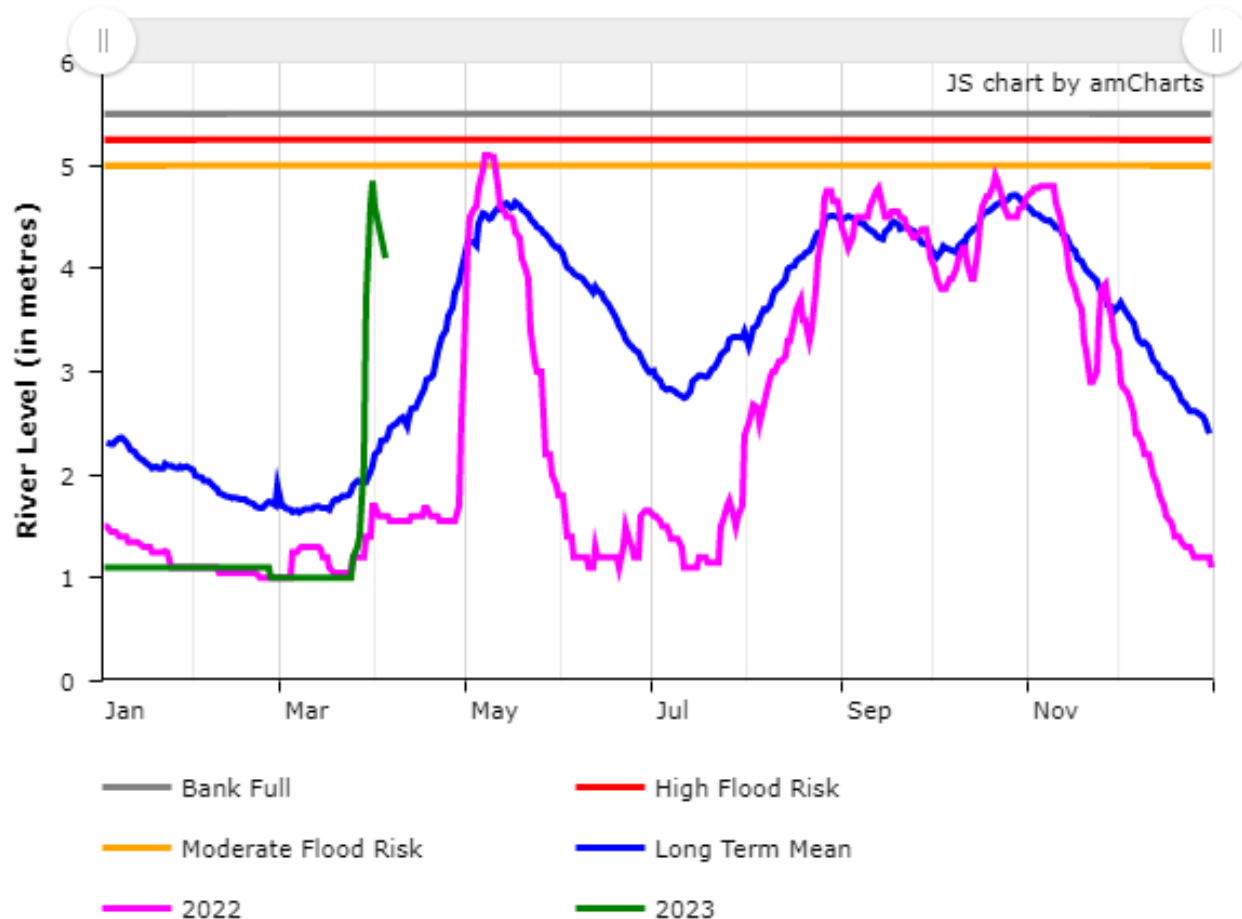
- Several parts of the country received moderate to heavy rains during the second half of March marking an early start of the Gu (April-May-June) long rain season in Somalia
- Jowhar station has recorded 48.5mm of rainfall during last 2weeks of March.

Forecast:

- **Moderate to Light rainfall** is predicted over middle Shabelle from 4 – 11 April.

Shabelle River Levels

Historical data for Station Jowhar on Shabelle River



- Currently river level along Shabelle are moderate/average for this period of the year with low risk of flooding.
- Levels along the Shabelle river is expected to rise in the coming days/weeks given the ongoing rains within Ethiopian highlands.
- As of late March, 62 open breakage points have been identify in Shabelle and Juba river which pose great risk of flooding.

Jowhar Flood Update

- On 1st April around mid-night, Shebelle river has flooded from an open breakage at Raqayle village which is approximatly 8km to the southeastren of Jowhar city;
- There are also other villages namely Burfule and Buulo Ahmed which has also report floodings, though the extent of the damaged is yet to be confirmed.
- The flood has affected farms destroying crops.
- The river level has subsequently dropped down from 4.85m to 4.30m.





Impacts of Past and Forecast Weather

Even though light to moderate rains are expected over Somalia, the heavy rains predicted (**forecast Map 1**) over Ethiopian highlands (more than 200 mm) will sustain the rising river levels in both Juba and Shabelle

The rising river levels can therefore poses a high risk of flooding in the towns and its surrounding

Open breakages pose a great risk with floods occurring in Buurfulle, Raqayle, Misir, Doonka, and Shiidlo Bari villages

The population living at the low lying areas and flood plains along the shabelle river should take precaution

The forecast light to moderate rains moderate temperatures throughout the country are likely to lead to partial recharge of surface water sources and vegetation regeneration which is important for human and livestock survival.

Communities are encouraged to take advantage of the rains and harvest water

SWALIM and partners are following the developments keenly, and will keep you updated



Food and Agriculture Organization
of the United Nations

Mahadsanid! Thank You



www.faoswalim.org

Next Meetings

- **Hiran Regional RCM:** 2nd May 2023 (2:00PM-3:30PM)
- **Middle Shabelle RCM:** 3rd May 2023 (10:00AM-11:30AM)
- **Hirshabelle SCM:** 12th April 2023 (10:00AM-11:30AM)

THANK YOU

