



**India Meteorological Department
Earth System Science Organisation
(Ministry of Earth Sciences)**

BULLETIN NO. : 24 (BOB/02/2019)

TIME OF ISSUE: 1700 HOURS IST

DATED: 29.04.2019

FROM: INDIA METEOROLOGICAL DEPARTMENT (FAX NO. 24643965/24699216/24623220)

TO: CONTROL ROOM, NDM, MINISTRY OF HOME AFFAIRS (FAX.NO. 23093750)

CONTROL ROOM NDMA (FAX.NO. 26701729)

CABINET SECRETARIAT (FAX.NO.23012284, 23018638)

PS TO HON'BLE MINISTER FOR S & T AND EARTH SCIENCES (FAX NO.23316745)

SECRETARY, MOES, (FAX NO. 24629777)

H.Q. (INTEGRATED DEFENCE STAFF AND CDS) (FAX NO. 23005137/23005147)

DIRECTOR GENERAL, DOORDARSHAN (23385843)

DIRECTOR GENERAL, AIR (23421105, 23421219)

PIB MOES (FAX NO. 23389042)

UNI (FAX NO. 23355841)

D.G. NATIONAL DISASTER RESPONSE FORCE (NDRF) (FAX NO. 26105912, 2436 3260)

DIRECTOR, PUNCTUALITY, INDIAN RAILWAYS (FAX NO. 23388503)

CHIEF SECRETARY, GOVT. OF ODISHA (FAX NO. 0674 -2536660)

CHIEF SECRETARY, ANDHRA PRADESH (FAX NO. 0863-2441029, 08645-246600)

CHIEF SECRETARY, TAMIL NADU (FAX NO. 044-25672304)

CHIEF SECRETARY, ANDAMAN & NICOBAR ISLANDS (FAX NO. 03192- 232656)

CHIEF SECRETARY, WEST BENGAL (FAX NO. 033-22144328)

CHIEF SECRETARY, PUDUCHERRY (FAX NO. 0413-2337575)

CHIEF SECRETARY, KERALA (FAX NO. 0471-2327176)

CHIEF SECRETARY, LAKSHADWEEP ISLANDS (FAX NO. 04896-262184)

**Sub: Cyclonic Storm 'FANI' over southeast Bay of Bengal & neighbourhood:
Cyclone Watch for Odisha Coast**

The **Cyclonic Storm 'FANI'** (pronounced as '**FONI**') over southeast Bay of Bengal & neighbourhood moved north-northwestwards with a speed of about 18 kmph in last six hours and lay centred at 1430 hrs IST of 29th April, 2019 near latitude 9.7°N and longitude 86.8°E over southeast Bay of Bengal & neighbourhood, about 620 km east-northeast of Trincomalee (Sri Lanka), 810 km east-southeast of Chennai (Tamil Nadu) and 950 km south-southeast of Machilipatnam (Andhra Pradesh). It is very likely to intensify into a **Severe Cyclonic Storm** during next 06 hours and into a **Very Severe Cyclonic Storm** during subsequent 24 hours. **It is very likely to move northwestwards till 01st May and thereafter recurve north-northeastwards towards Odisha Coast.**

Forecast track and intensity are given in the following table:

Date/Time(IST)	Position (Lat. °N/ long. °E)	Maximum sustained surface wind speed (Kmph)	Category of cyclonic disturbance
29.04.19/1430	9.7/86.8	85-95 gusting to 110	Cyclonic Storm
29.04.19/1730	10.0/86.8	95-105 gusting to 120	Severe Cyclonic Storm
29.04.19/2330	10.6/86.5	110-120 gusting to 135	Severe Cyclonic Storm
30.04.19/0530	11.2/86.2	120-130 gusting to 145	Very Severe Cyclonic Storm
30.04.19/1130	11.7/85.7	130-140 gusting to 155	Very Severe Cyclonic Storm
30.04.19/2330	12.6/84.6	140-150 gusting to 165	Very Severe Cyclonic Storm
01.05.19/1130	13.2/84.0	150-160 gusting to 175	Very Severe Cyclonic Storm
01.05.19/2330	13.8/83.8	160-170 gusting to 185	Very Severe Cyclonic Storm
02.05.19/1130	14.7/83.9	170-180 gusting to 195	Extremely Severe Cyclonic Storm
02.05.19/2330	16.1/84.1	170-180 gusting to 195	Extremely Severe Cyclonic Storm
03.05.19/1130	17.2/84.5	165-175 gusting to 190	Extremely Severe Cyclonic Storm
03.05.19/2330	18.3/85.0	160-170 gusting to 185	Extremely Severe Cyclonic Storm
04.05.19/1130	19.4/85.8	155-165 gusting to 180	Very Severe Cyclonic Storm

Spatial rainfall distribution: Isolated: <25%, A few: 26-50%, Many: 51-75%, Most: 76-100%

Rainfall amount (mm): Heavy rain: 64.5 – 115.5, Very heavy rain: 115.6 – 204.4, Extremely heavy rain: 204.5 or more.

Warnings:

(i) Heavy rainfall warning

- Light to moderate rainfall at many places with heavy falls at isolated places very likely over Kerala on 29th & 30th April, 2019. Light to moderate rainfall at a few places over north coastal Tamil Nadu & south coastal Andhra Pradesh on 29th & 30th April, 2019.
- Light to moderate rainfall at few places very likely over north coastal Andhra Pradesh & south coastal Odisha on 2nd May. It is likely to increase in intensity with heavy to very heavy rainfall at isolated places over coastal Odisha & adjoining districts of north coastal Andhra Pradesh from 3rd May. Light to moderate rainfall at many places with heavy falls at isolated places also very likely to commence over coastal districts of West Bengal from 3rd May.

(ii) Wind warning

- Gale wind speed reaching 80-90 kmph gusting to 100 kmph is prevailing over Southeast Bay of Bengal & neighbourhood. It is very likely to increase gradually becoming 120-130 kmph gusting to 145 kmph over Southwest Bay of Bengal from 30th morning and 160-170 kmph gusting to 185 kmph over southwest & adjoining westcentral Bay of Bengal off north Tamilnadu, Puducherry and south Andhra Pradesh Coasts from 01st May evening.
- Strong wind speed reaching 30-40 kmph gusting to 50 kmph very likely along & off Tamilnadu & Puducherry coast, Comorin area and Gulf of Mannar on today the 29th April, becoming squally wind speed reaching 40-50 kmph gusting to 60 kmph from 30th morning. It is very likely to become squally wind speed reaching 50-60 kmph gusting to 70 kmph from 30th evening along north Tamilnadu, Puducherry and south Andhra Pradesh Coasts.
- Strong wind speed reaching 30-40 kmph gusting to 50 kmph very likely along & off Kerala coast on today the 29th April and becoming squally wind speed reaching 40-50 kmph gusting to 60 kmph on 30th.
- Squally wind speed reaching 40-50 kmph gusting to 60 kmph is very likely to commence along & off north Andhra Pradesh & Odisha Coasts from 2nd May and likely to become 50-60 kmph gusting to 70 kmph from 3rd May onwards over the same area.

(iii) Sea condition

- The sea condition is very high over Southeast Bay of Bengal & neighbourhood. It is likely to become phenomenal over southwest & adjoining westcentral Bay of Bengal, off north Tamilnadu, Puducherry and south Andhra Pradesh Coasts from 30th morning and over westcentral Bay of Bengal off Andhra Pradesh Coast during 1-3 May 2019.
- Sea conditions very likely to be rough to very rough along & off Puducherry, Tamilnadu and south Andhra Pradesh Coasts till 1st May 2019, along & off north Andhra Pradesh Coasts on 1-3 May and along & off Odisha Coast from 2nd May onwards.

(iv) Fishermen Warning

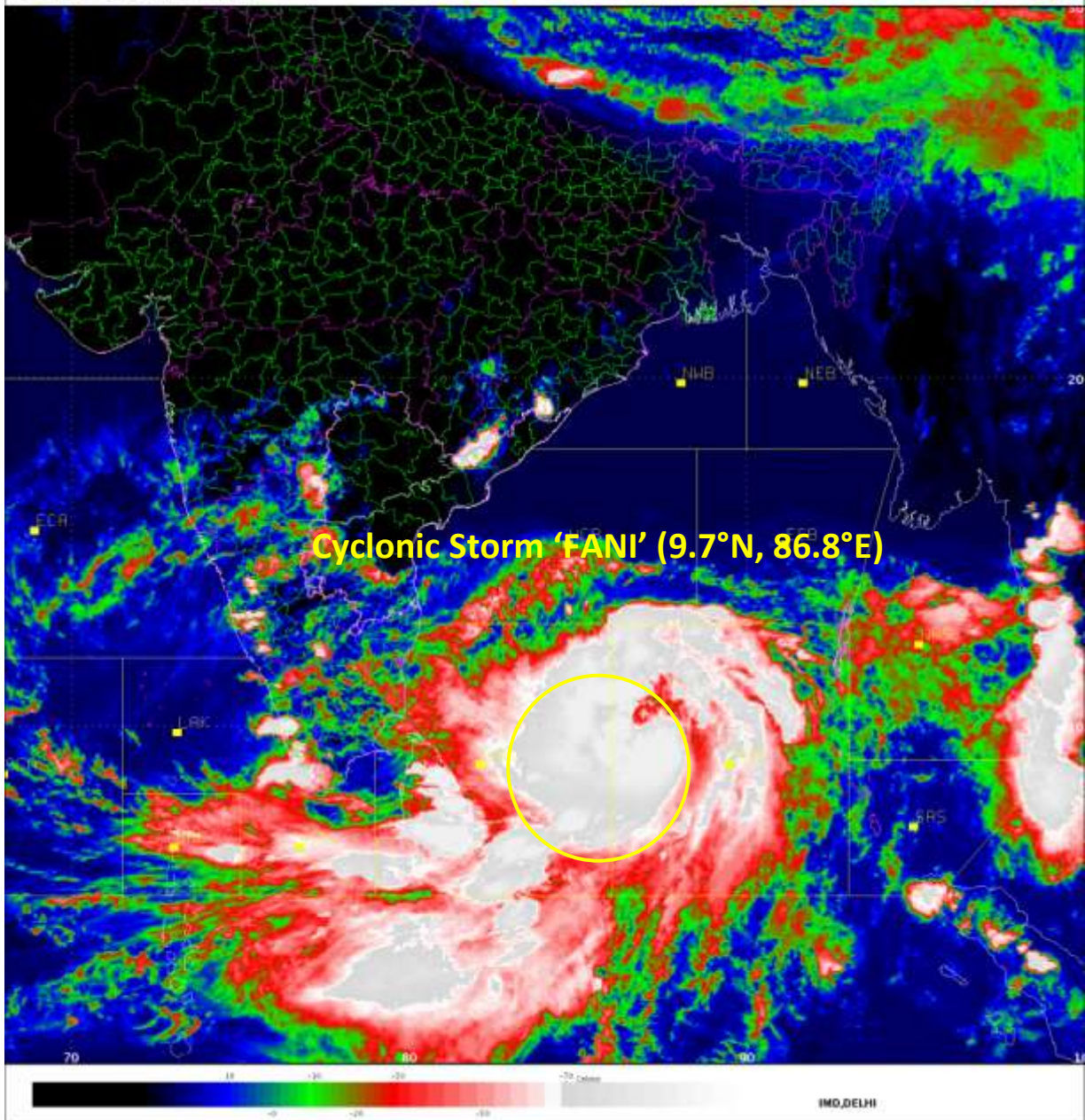
- The fishermen are advised not to venture into deep sea areas of Southeast Bay of Bengal & adjoining Equatorial Indian Ocean, Southwest Bay of Bengal and off Sri Lanka coast on today the 29th April; Southwest & adjoining westcentral Bay of Bengal, along & off Sri Lanka, Puducherry, Tamilnadu & south Andhra Pradesh coasts till 1st May, westcentral Bay of Bengal, along & off north Andhra Pradesh Coast during 1-3 May 2019 and northwest & adjoining west]central Bay of Bengal along & off Odisha and West Bengal coasts from 2 May onwards.
- Those, who are out in deep sea above areas are advised to return to the coasts.

The next bulletin will be issued at 2030 hrs IST of 29th April, 2019.

(Naresh Kumar)
Scientist-E, RSMC, New Delhi

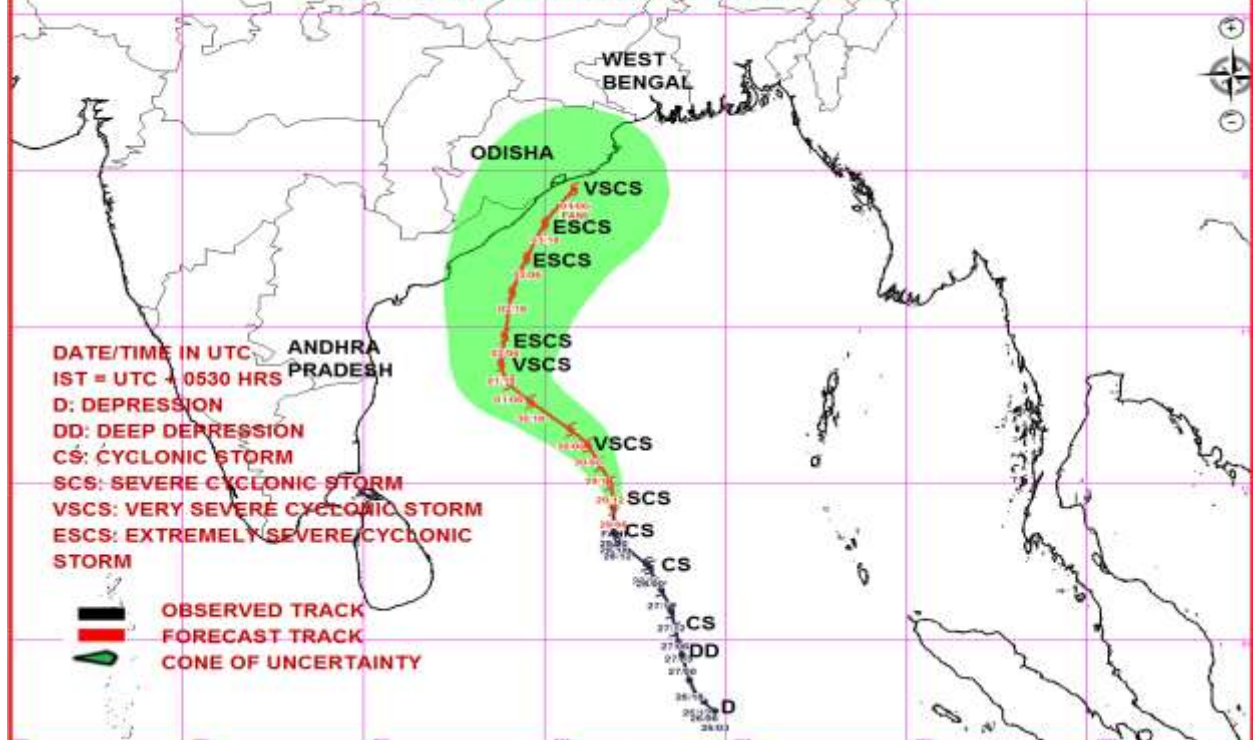
Copy to: CRS, Pune/ ACWC Kolkata/ Chennai/ CWC Bhubaneswar/CWC Visakhapatnam

Spatial rainfall distribution: Isolated: <25%, A few: 26-50%, Many: 51-75%, Most: 76-100%
Rainfall amount (mm): Heavy rain: 64.5 – 115.5, Very heavy rain: 115.6 – 204.4, Extremely heavy rain: 204.5 or more.

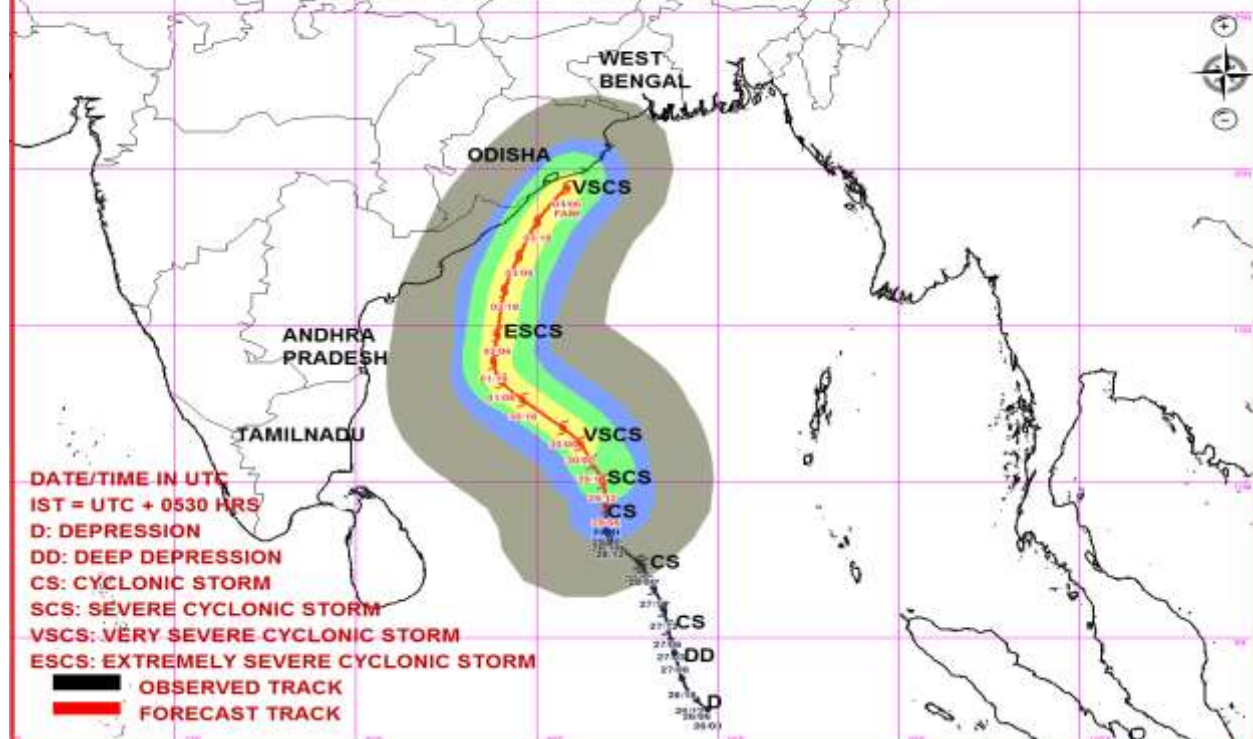


Spatial rainfall distribution: Isolated: <25%, A few: 26-50%, Many: 51-75%, Most: 76-100%
Rainfall amount (mm): Heavy rain: 64.5 – 115.5, Very heavy rain: 115.6 – 204.4, Extremely heavy rain: 204.5 or more.

OBSERVED AND FORECAST TRACK ALONG WITH CONE OF UNCERTAINTY IN ASSOCIATION WITH CYCLONIC STORM "FANI" OVER SOUTHEAST BAY OF BENGAL BASED ON 0600 UTC OF 29th APRIL, 2019



OBSERVED & FORECAST TRACK ALONGWITH QUADRANT WIND DISTRIBUTION IN ASSOCIATION WITH CYCLONIC STORM "FANI" OVER SOUTHEAST BAY OF BENGAL BASED ON 0600 UTC OF 29th APRIL, 2019



MSW(knot)/kmph)	Impact	Action
28-33 /(51-62)	Very rough seas.	Total suspension of fishing operations
34-49/(63-91)	High to very high seas	Total suspension of fishing operations
50-63/(92-117)	Very High seas	Total suspension of fishing operations
≥ 64 (≥118)	Phenomenal	Total suspension of fishing operations

Rainfall amount (mm): Heavy rain: 64.5 – 115.5, Very heavy rain: 115.6 – 204.4, Extremely heavy rain: 204.5 or more.