

# Food Security Cluster Coordination Meeting Hirshabelle State

19-September-2023

# Agenda

1. Introduction and opening remarks (MoHADMD, MoAI, MoLFR)
2. Review of action points from previous meeting
3. IPC Post Gu 2023 Findings – FSNAU
4. Rainfall and Weather Update in Hirshabelle State (El-Nino Projections) – FAO

## SWALIM

5. El-Nino Partner Preparedness and Capacity – FSC
6. AOB

Introduction and opening  
remarks (MoAI, MoLFR,  
MoHADDM)

## Previous action points

1. FSC and Nutrition Cluster to organize a joint meeting on the Nutrition-Relief referral programming. –

**CANCELED**

2. FSC to share Partners' Response Overview for June 2023. – **DONE**

3. FSC to share the presentation on needs assessment in Cadale district by INOCDO. – **DONE**

4. FSC to send request to partners on stock and capacity status in preparedness of El-Nino effect. –

**ONGOING**

5. FSC to share the final report of the Balacad Floods RNA. – **DONE**

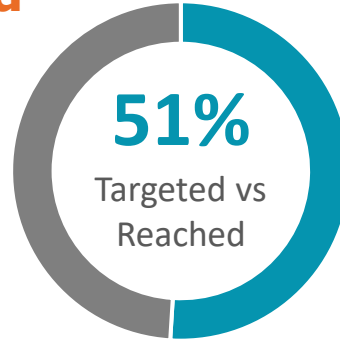
# FSC Partner Response Overview (August 2023)

# FS Response | (SO1) Improve access to food | Aug 2023

## People Targeted vs Reached (Monthly)

**571 K**  
People Targeted

**289 K**  
People Reached



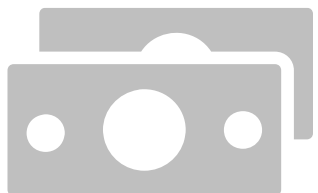
## Response by Modality (Monthly)

**170 K**  
Cash

**68 K**  
Voucher

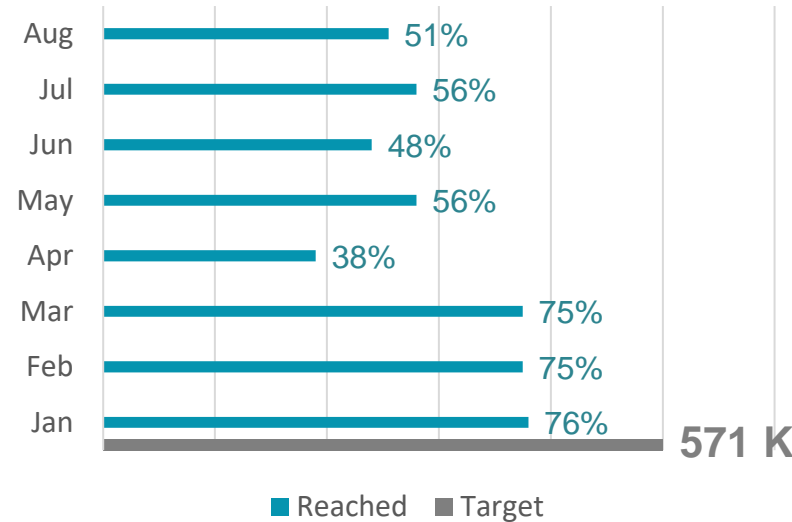
**51 K**  
In-kind

## Cash & Vouchers Transferred (Monthly)

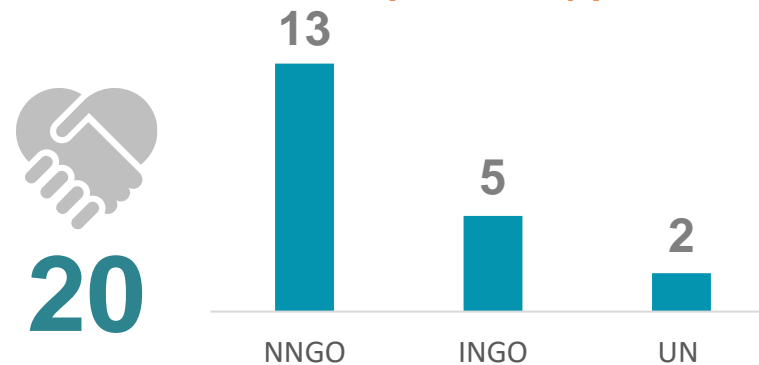


**2 M \$**

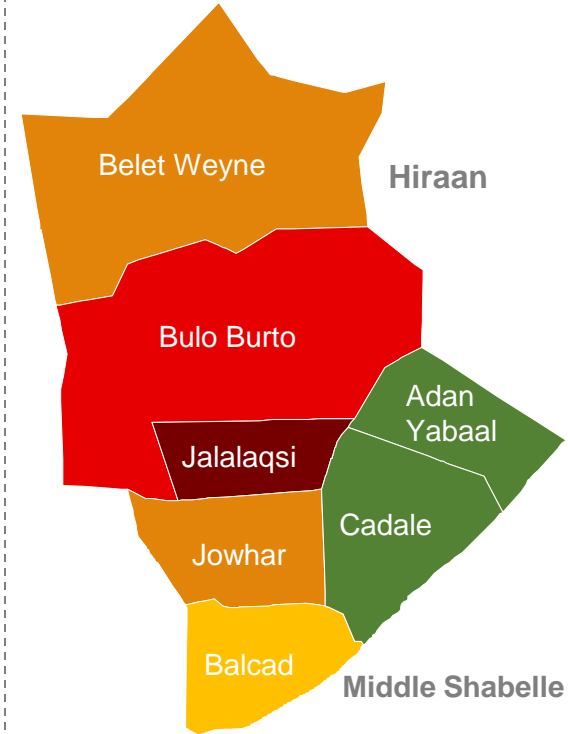
## People Targeted vs Reached (Per Month)



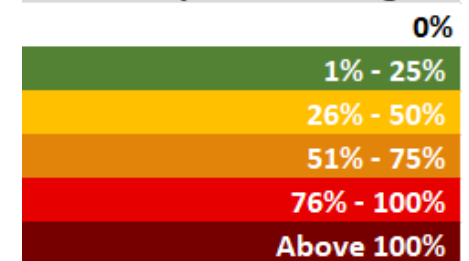
## Total Partners (Monthly)



## Coverage Map



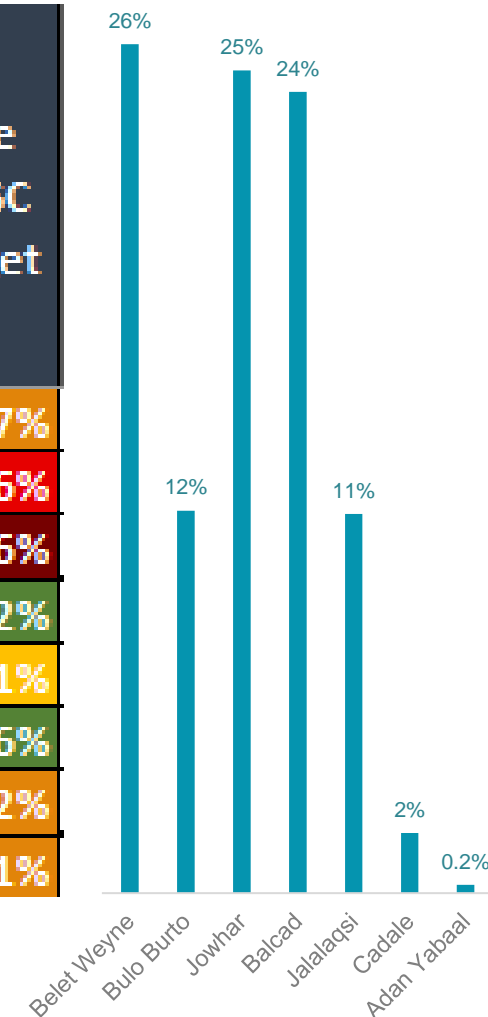
### % of response coverage



# FS Response District Level (SO1) | Aug 2023



Region	District	FSC 2023 HRP Target (SO1)	(SO1) Improve availability and access to food actual achievement (Monthly)	% of response coverage vs FSC 2023 HRP Target
Hiraan	Belet Weyne	131,010	74,310	57%
	Bulo Burto	38,730	33,468	86%
	Jalalaqsi	22,710	33,192	146%
Middle Shabelle	Adan Yabaal	36,980	720	2%
	Balcad	171,610	70,116	41%
	Cadale	32,400	5,244	16%
	Jowhar	137,560	71,994	52%
<b>Total</b>		<b>571,000</b>	<b>289,044</b>	<b>51%</b>



## People Targeted vs Reached (Cumulative)

**425 K**  
People Targeted

**197 K**  
People Reached



## Response by Modality (Cumulative)

**3 K**  
Cash

**126 K**  
Voucher

**49 K**  
In-kind

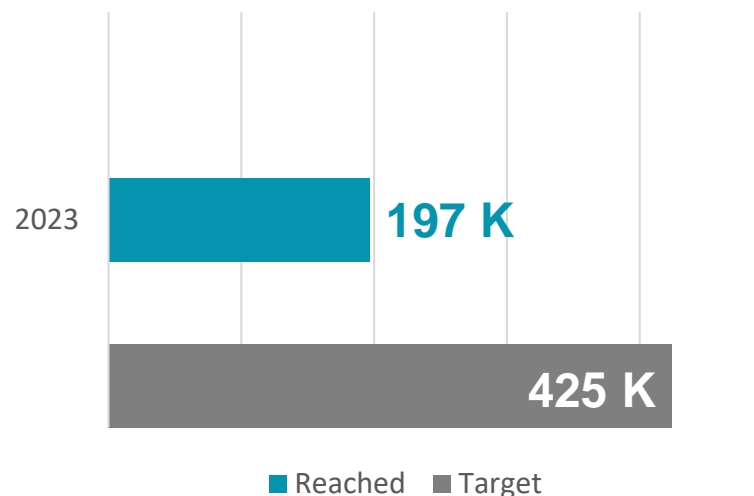
**19 K**  
Training

## Cash & Vouchers Transferred (Cumulative)

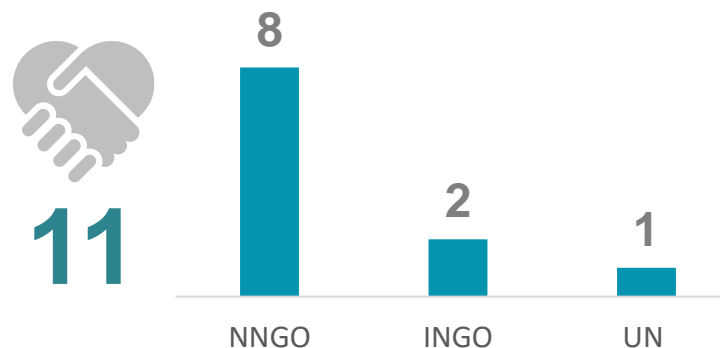


**293.6 K \$**

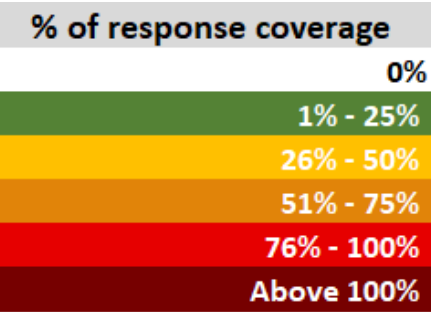
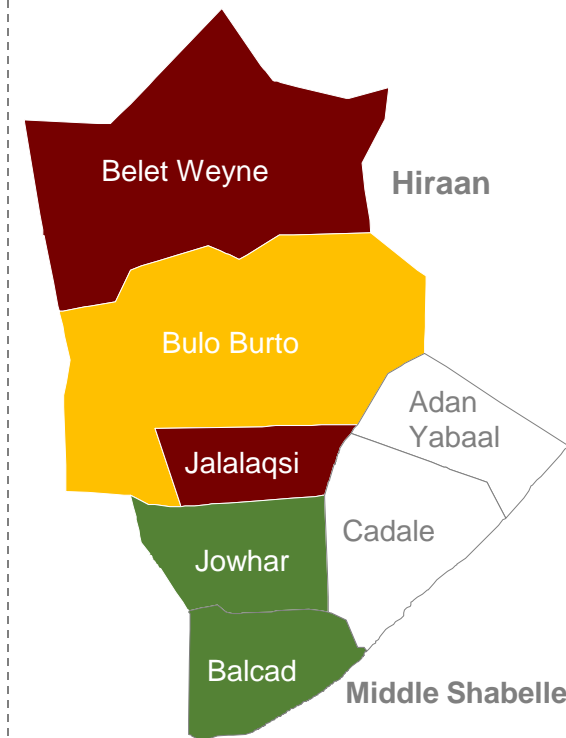
## People Targeted vs Reached (Per Month)



## Total Partners (Cumulative)



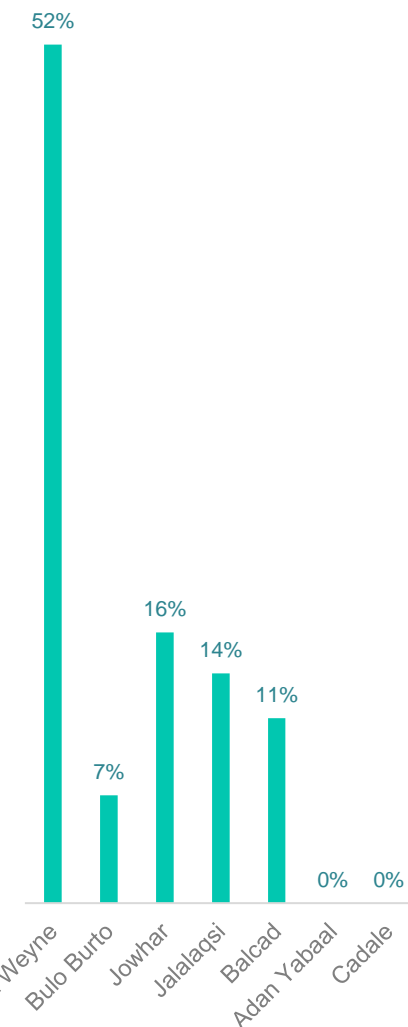
## Coverage Map





# FS Response District Level (SO2) | Aug 2023

Region	District	FSC 2023 HRP Target (SO2)	(SO2)Protect livelihoods and related food and income sources (Cumulative)	% of response coverage vs FSC 2023 HRP Target
Hiraan	Belet Weyne	85,617	102,312	119%
	Bulo Burto	35,080	12,852	37%
	Jalalaqsi	16,380	27,366	167%
Middle Shabelle	Adan Yabaal		0	
	Balcad	127,410	22,026	17%
	Cadale	32,400	0	0%
	Jowhar	127,668	32,268	25%
<b>Total</b>		<b>424,555</b>	<b>196,824</b>	<b>46%</b>



# IPC Post Gu 2023 Findings – FSNAU

*(presentation attached separately)*

# Rainfall and Weather Update in Hirshabelle State (El-Nino Projections) – FAO SWALIM



Food and Agriculture Organization  
of the United Nations



# **El Niño Projection: Deyr 2023 Climate Outlook and Implications on Livelihoods and Programming**

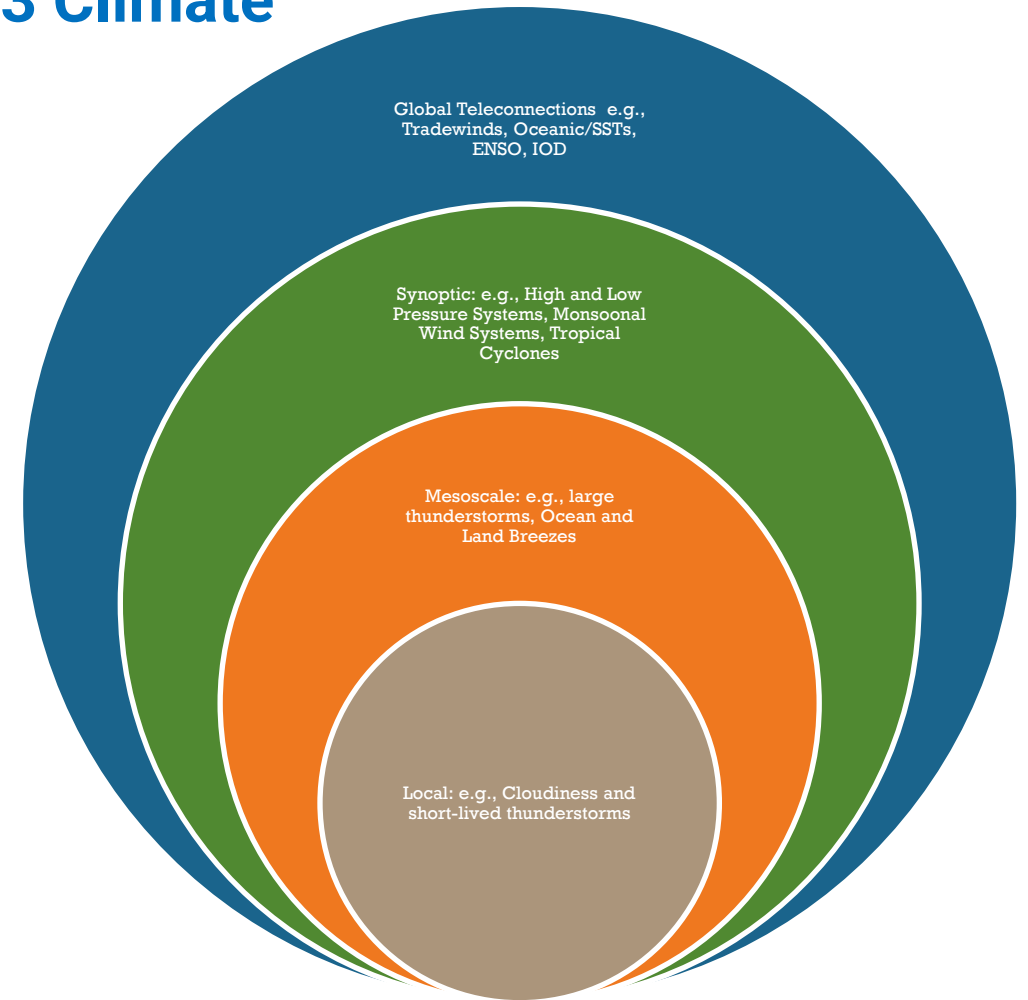
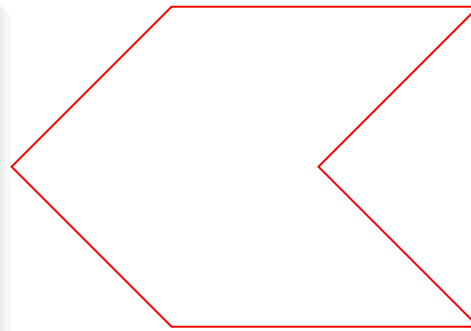
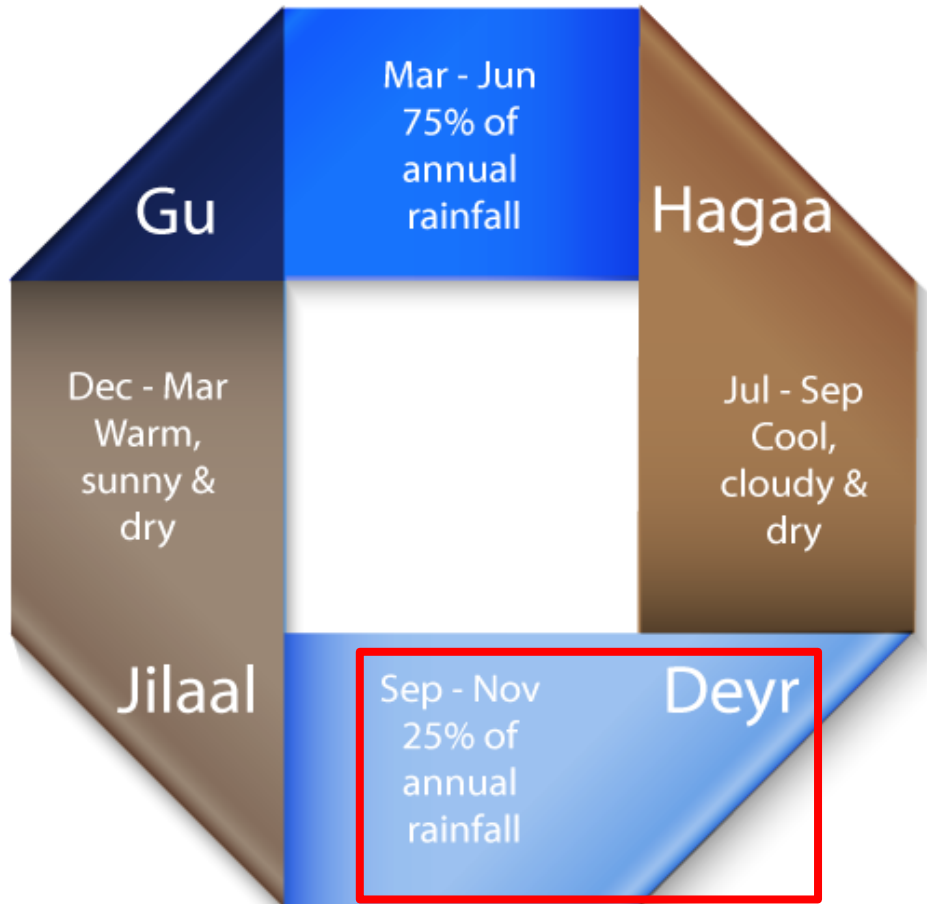
Hirshabelle Regional Food Security Cluster  
Coordination Meeting

---

**Bethwel K. Mutai**  
Meteorologist, FAO SOMALIA- SWALIM



# What is the Status and Evolution of the Systems; and the Deyr 2023 Climate Outlook?



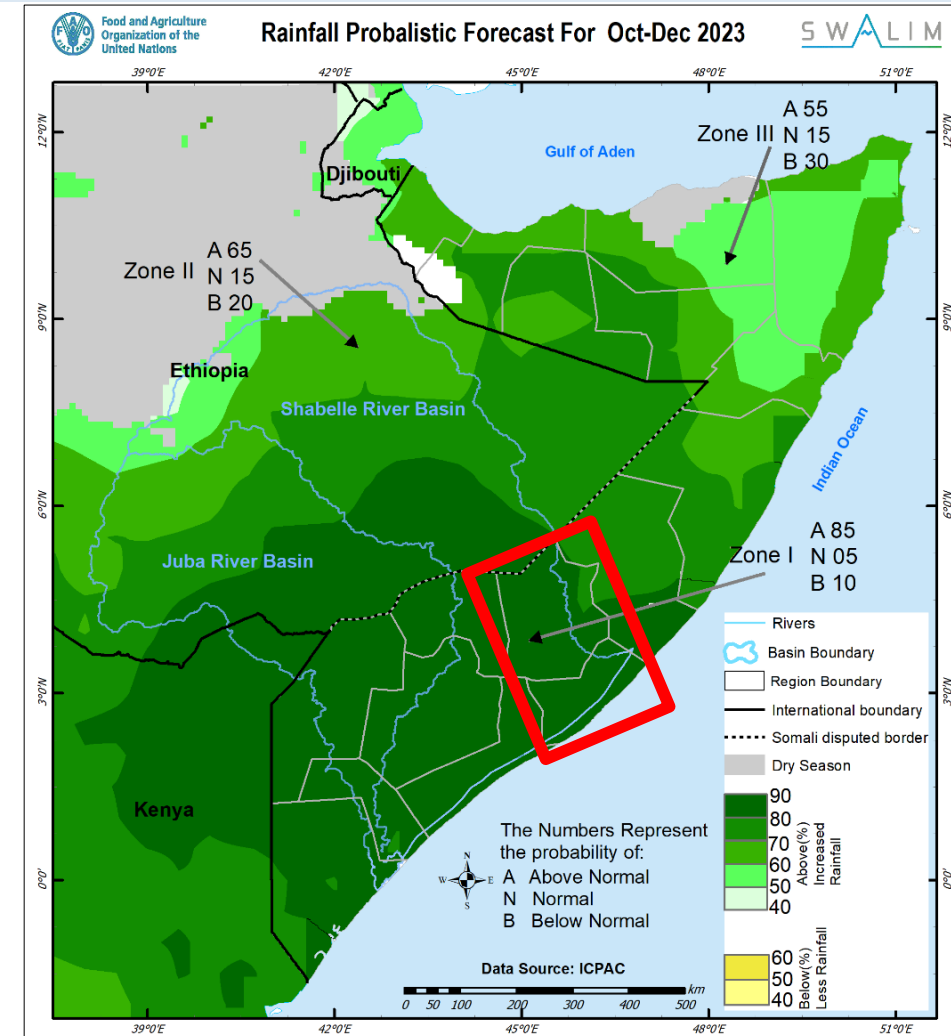


## ***Status and Evolution of Drivers of the Deyr 2023 Weather and Climate***

- Given the recent evolution of warmer than average **SSTs** over the central and eastern equatorial Pacific Ocean, most global climate models have confirmed the **presence and persistence of El Niño** conditions throughout the Deyr 2023 season
- Moreover, similar warming of ocean waters near the East African coastline, together with cooling down of the waters near the western Australian coastline, which technically defines a **positive Indian Ocean Dipole (IOD)**, is expected to lead to above normal rains over most parts of East Africa.
- Somalia's *Deyr* (October - December) “short rains” season is associated with the somewhat-faster southward movement of the **Inter-Tropical Convergence Zone (ITCZ)** which dictates much of the country's climate.

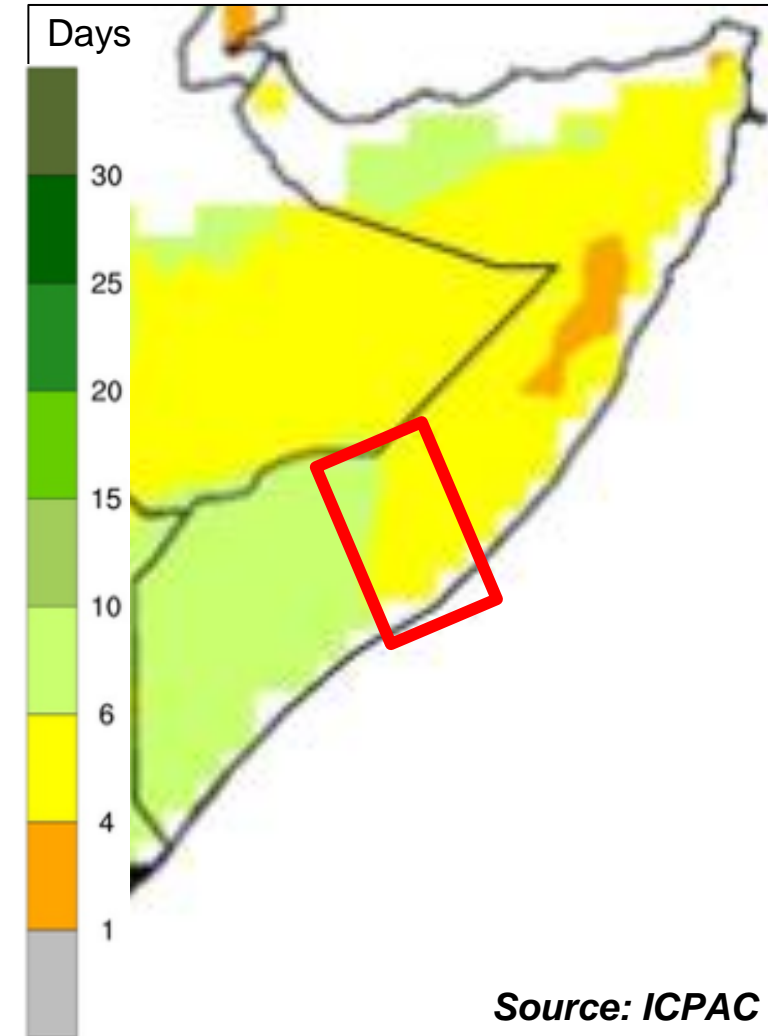
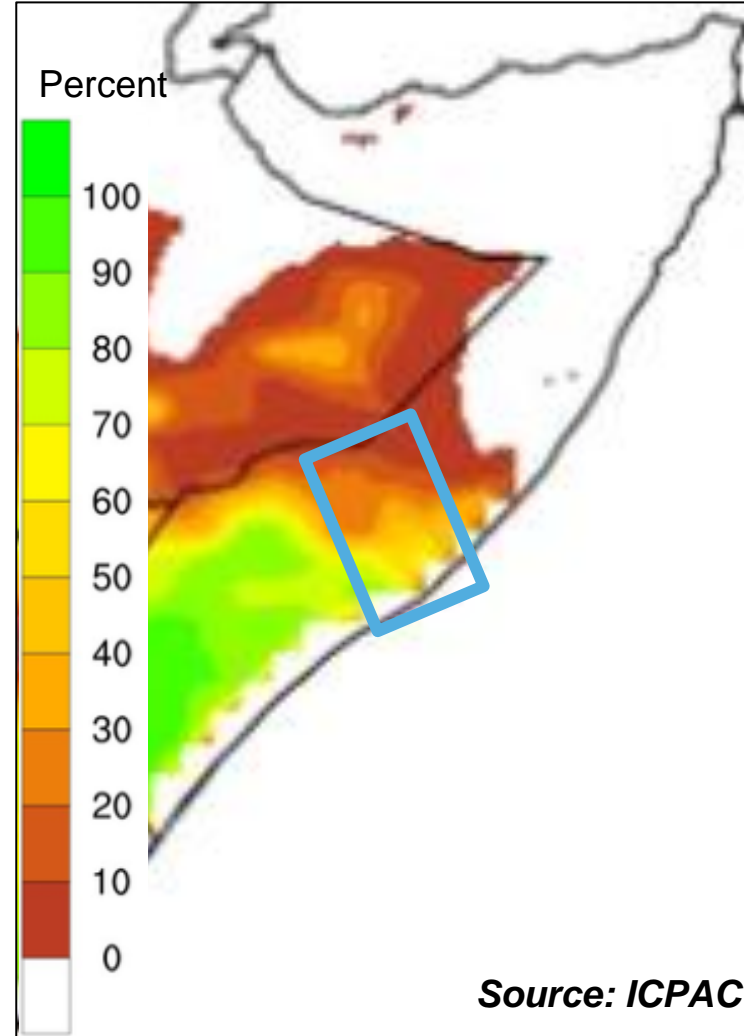
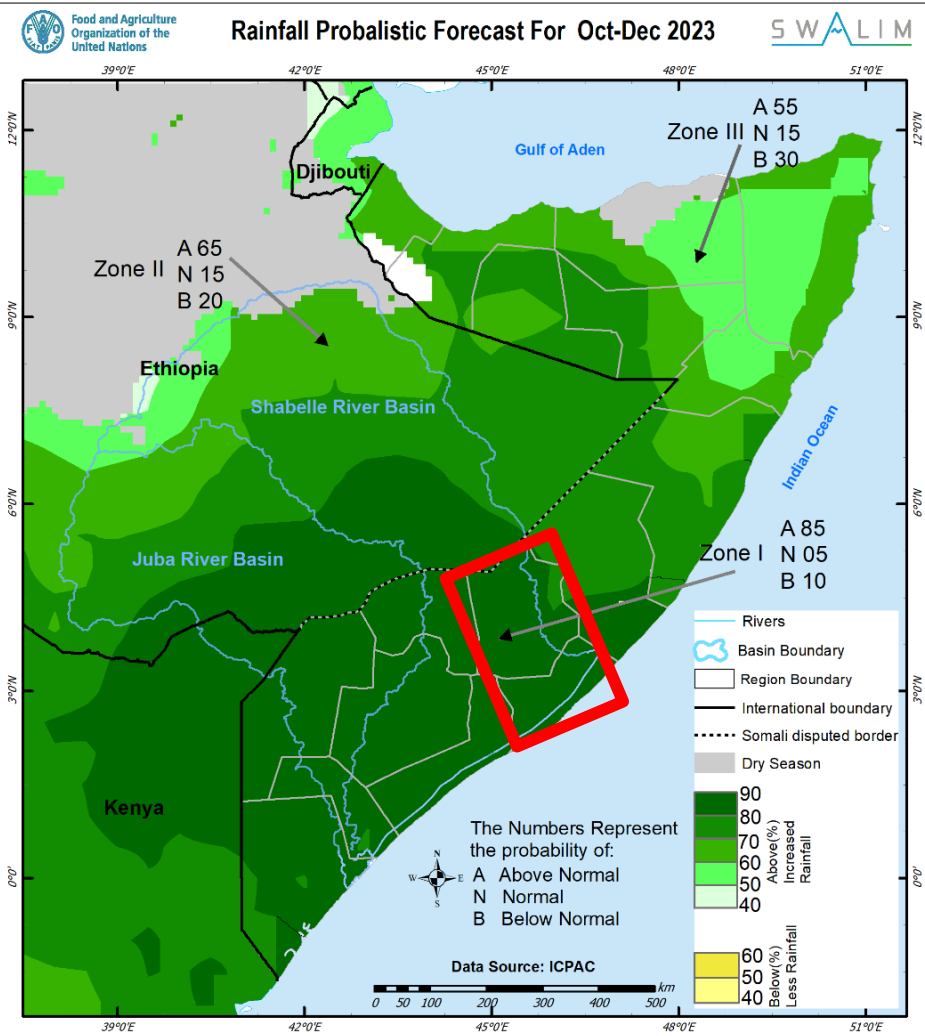
## Deyr 2023 Climate Outlook: Terciles, Exceedance and Wet Spells

- There is **exceptionally high likelihood (85 %)** of enhanced rainfall over Hirshabelle
- Based on climatology, rains in **excess of 150 mm** will be expected over Middle Shabelle during the season
- It is important to point out that such enhanced rains will fall over the **catchments of Shabelle River**
- The **likelihood of the cumulative rain amounts exceeding 300 mm** over the Shabelle River basin within the country increases downstream towards Middle Shabelle (60 %)
- Were such rains to fall, they will translate to about **double the LTM/average rainfall**
- Over most parts of Hirshabelle region, including the Shabelle River catchment, up to **six (6) consecutive rainy days** are probable



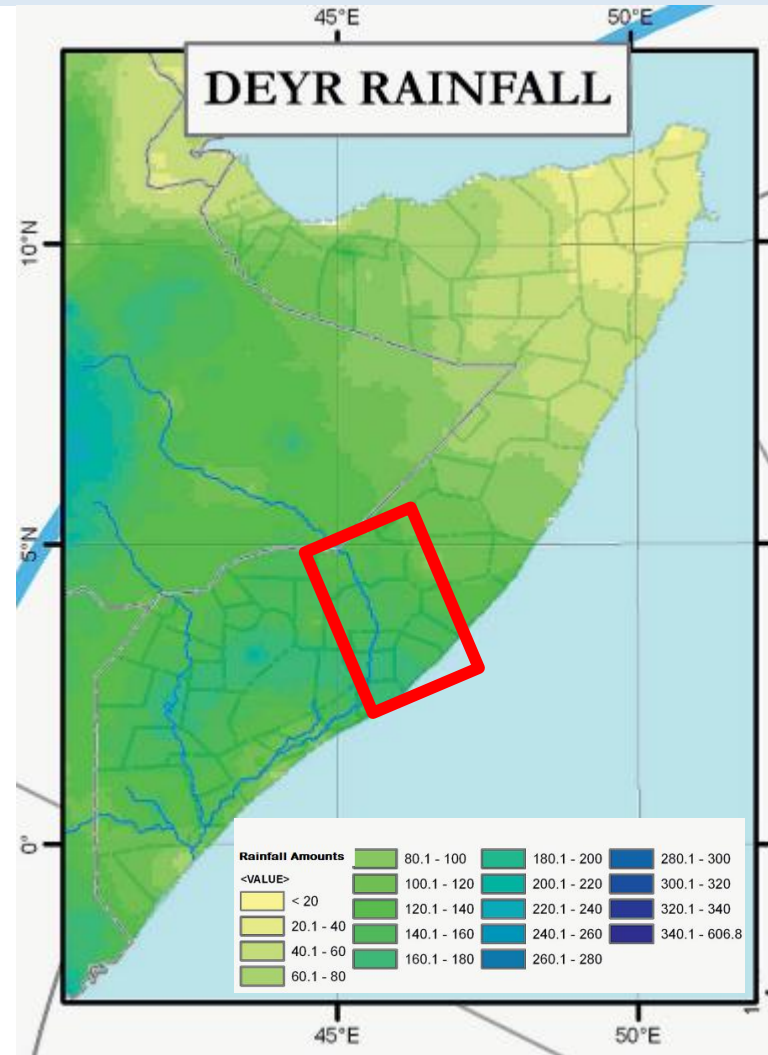


## Deyr 2023 Climate Outlook: Terciles, Exceedance and Wet Spells

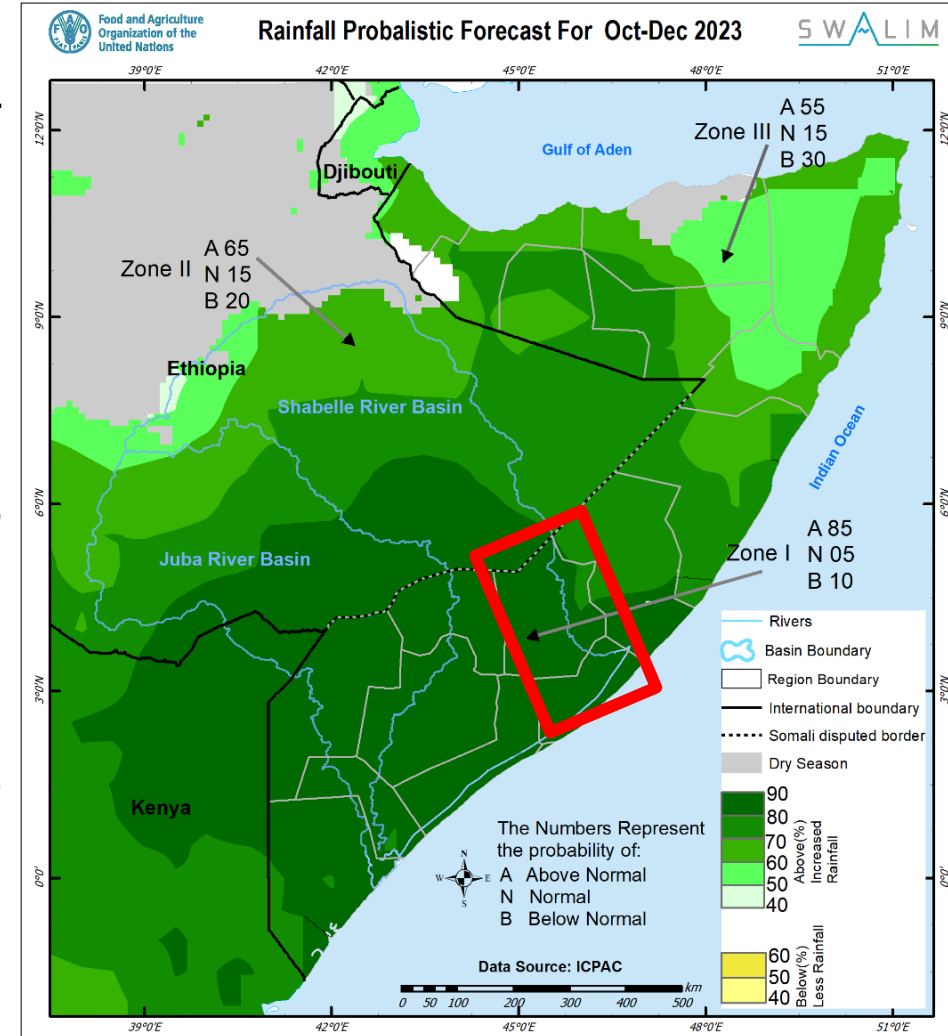




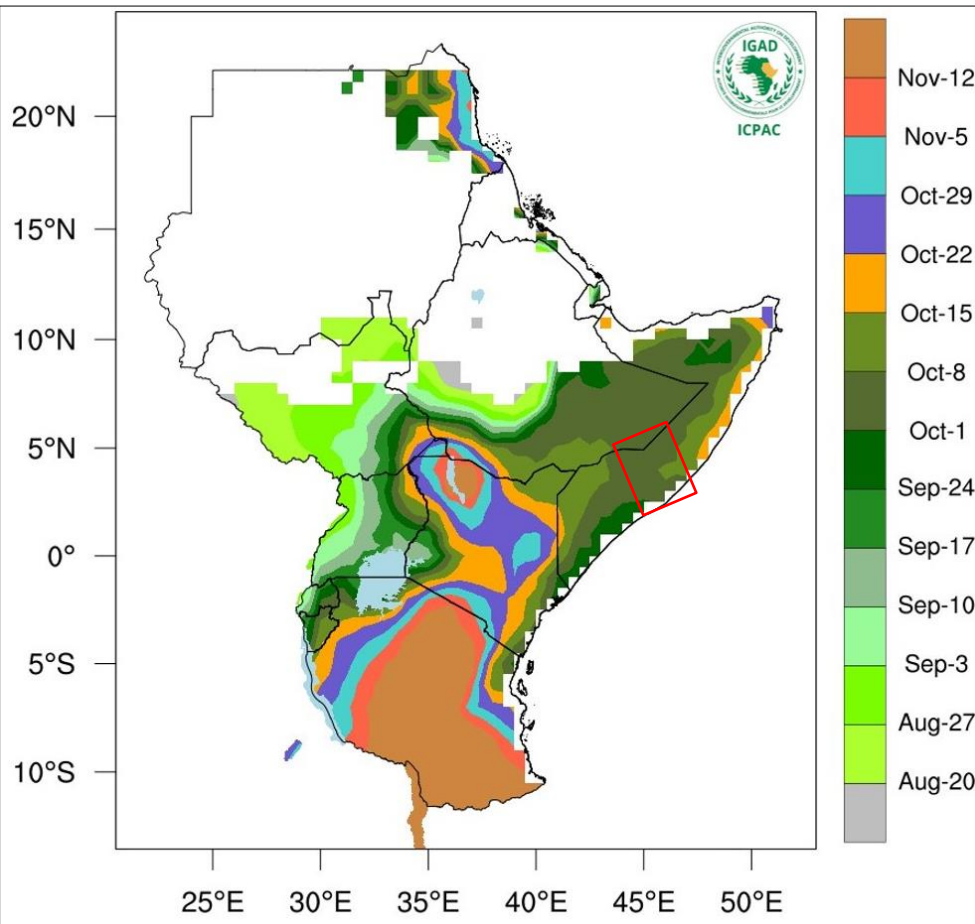
## Deyr 2023 Climate Outlook: Probability vs Climatology



- What does the 85 % **likelihood of enhanced rainfall** over Middle Shabelle region translate to in actual amounts?
- Based on climatology, rains in **excess of 150mm** will be expected during the season
- Occurrence of consecutive rainy days are therefore critical to forecast, **monitor and report**

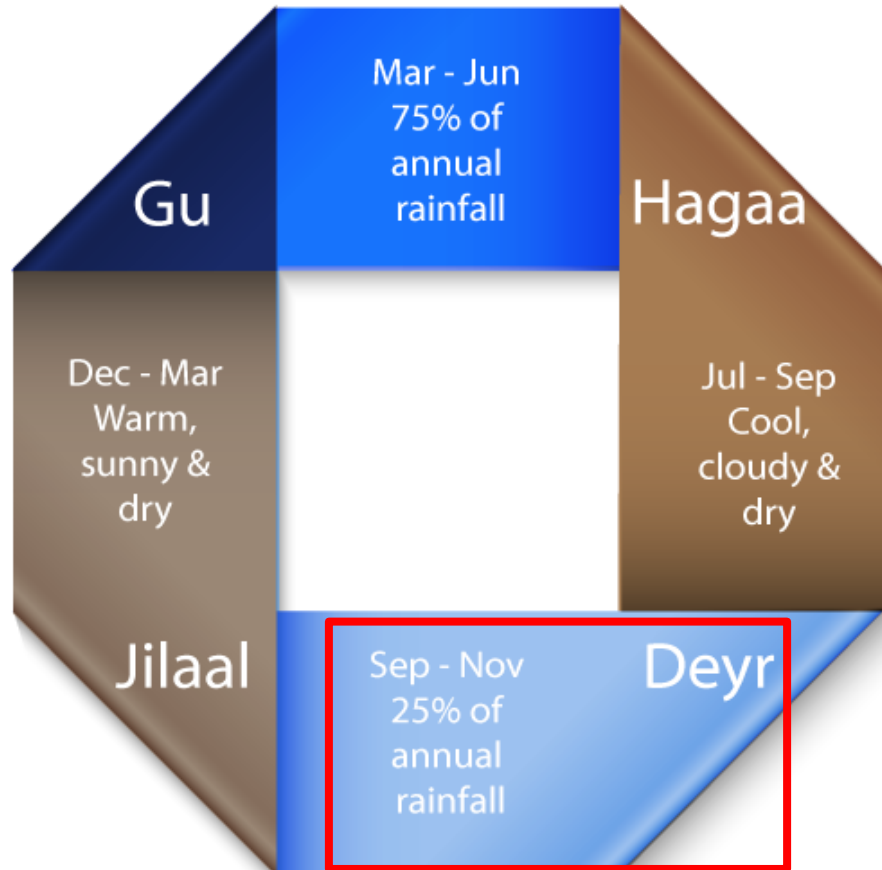


## Deyr 2023 Climate Outlook: Forecast Onset Dates



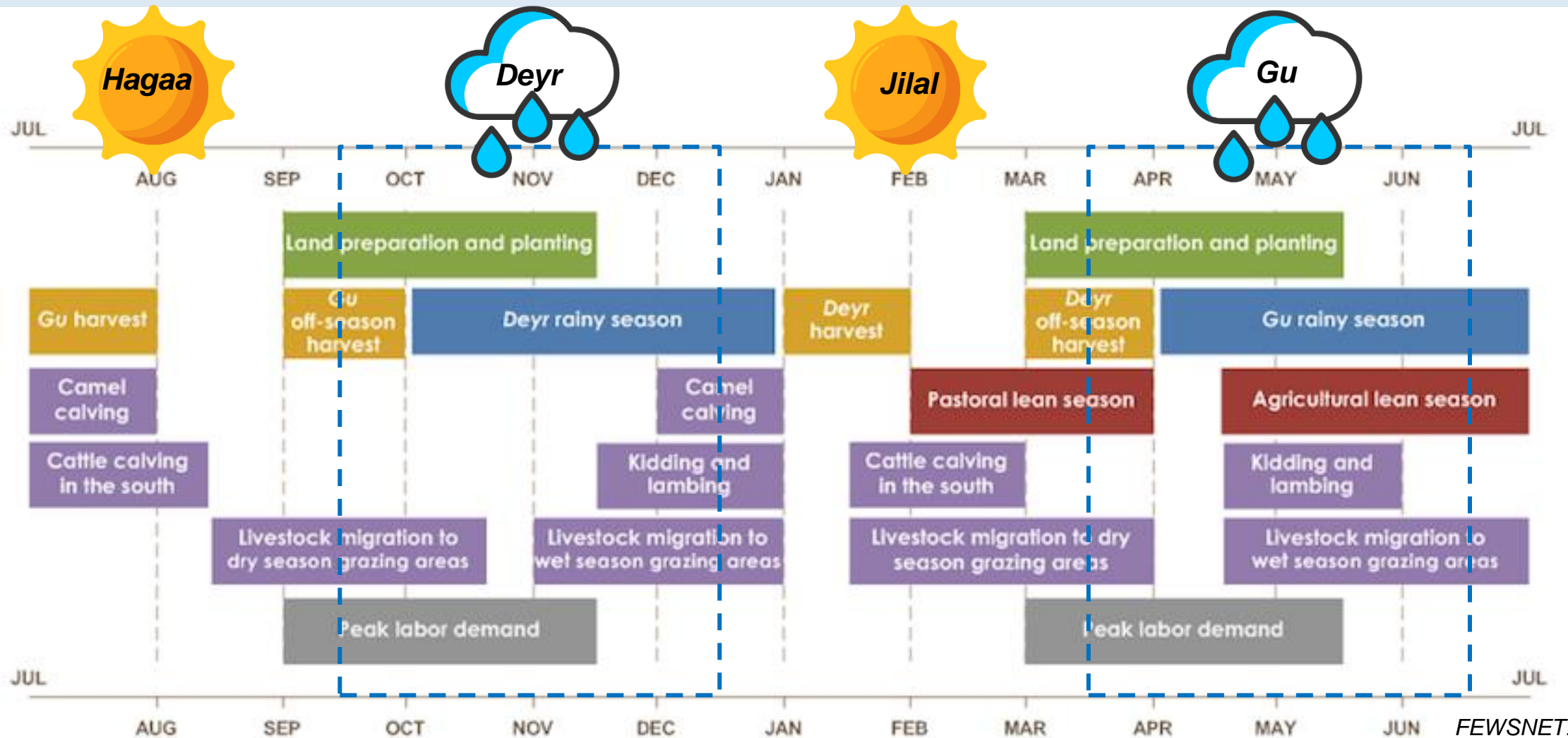
- **Cloudiness accompanied by light rains** is expected as early as **September** over the northern and in the coastal southern parts
- **MJO (Phase 2)** seems to have influenced the rains in early September and may be back in phase around last week of October in sync with El Nino
- Onset of **significant rainfall** is expected in the **last week of September** from the coastal southern parts and over Sool - Sanaag border areas
- From the coastal south, these rains will then progress to Hirshabelle, and over the Shabelle River catchment in the **first week of October**





## What are the Implications of Deyr 2023 Climate Outlook on Livelihoods and Programming?

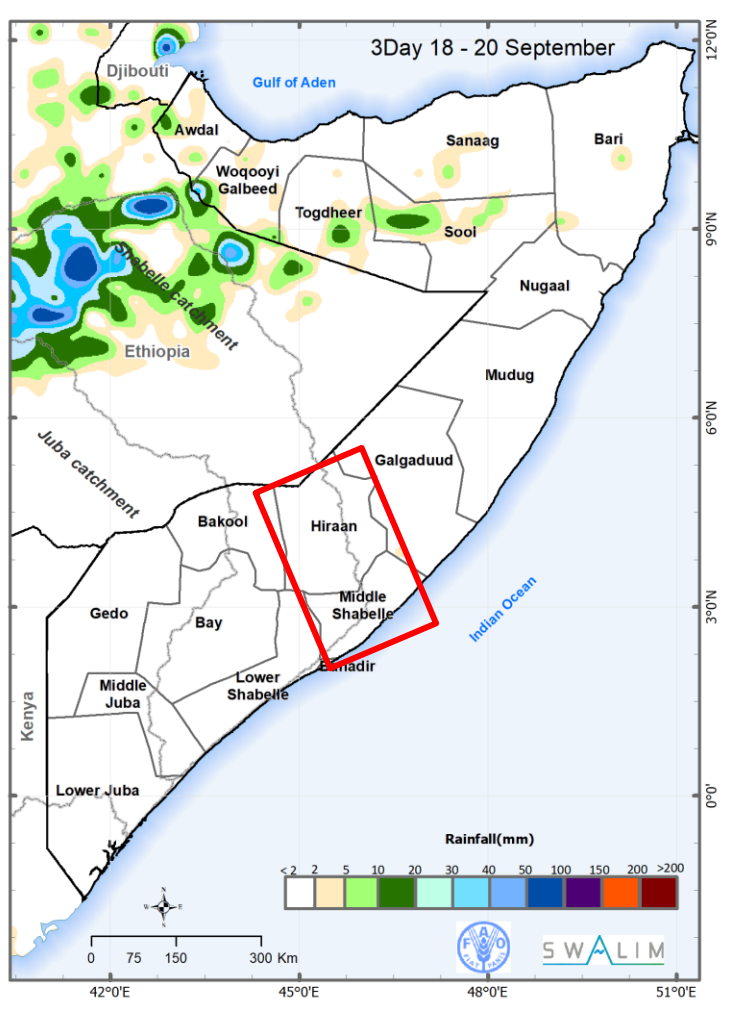
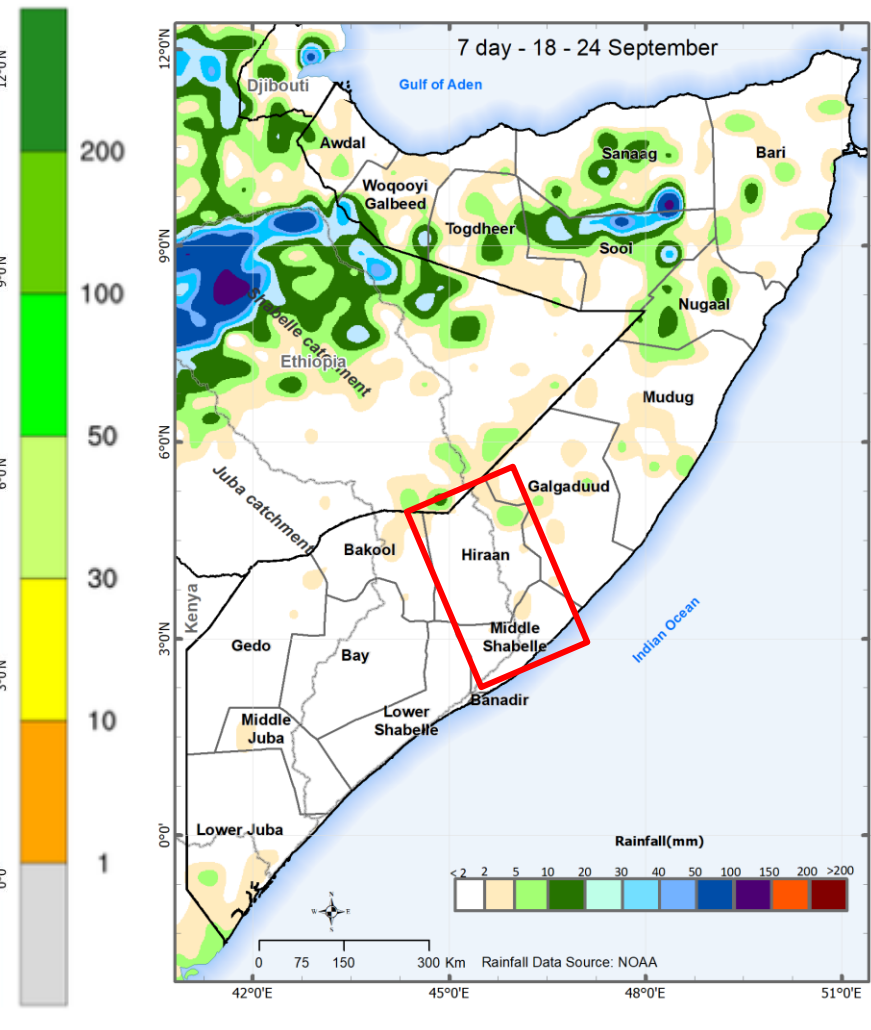
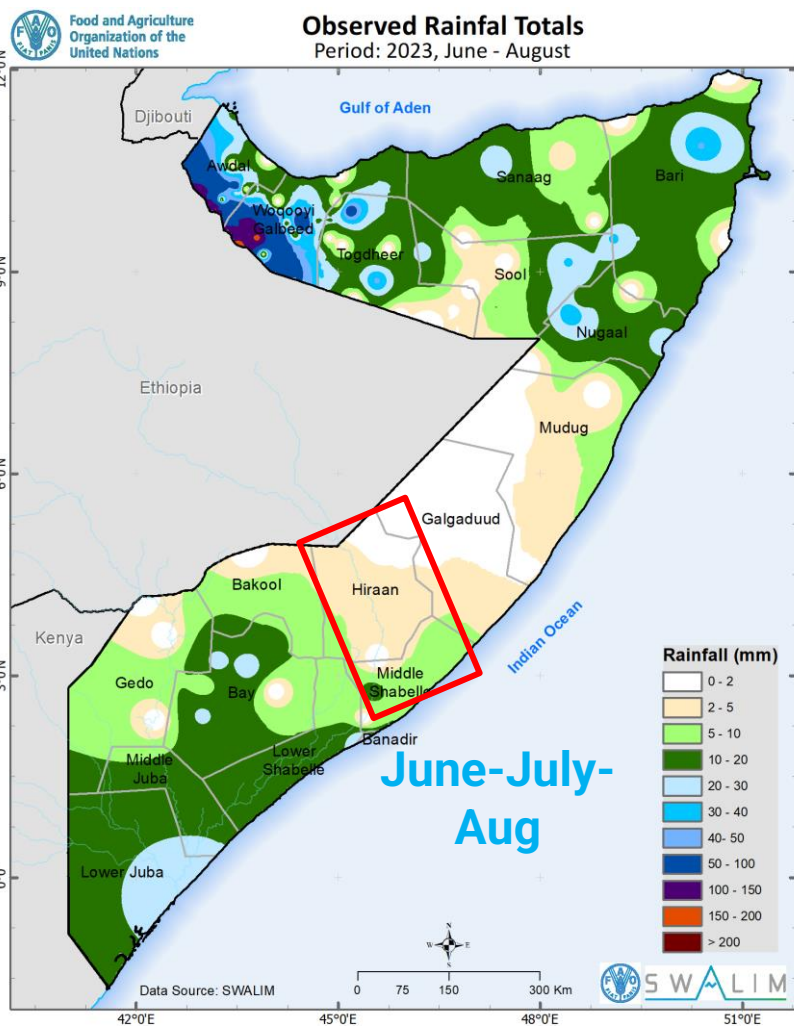
## The Four Seasons and Associated Livelihoods



FEWSNET:Modified



## Observed *Hagaa* Rainfall, 7-Days and 3-days NOAA/CPC Sept Forecast Conditions





## **Deyr 2023 Climate Outlook: Implication on Livelihoods and Programming: Risks**

- In terms of associated **risks**, the enhanced rainfall amounts expected in six (6) **consecutive days** over Shabelle River catchments within the country and across the Ethiopian border and
- .... flowing downstream into already **saturated soils** will be a recipe for a disastrous **riverine flood** from the **third week of October**
- As part of the timely and accurate **early warning system**, **anticipatory action** for riverine flooding must be **activated** in vulnerable areas
- Fortunately, the present forecast cloudiness , light rains but largely **dry** conditions over the Shabelle River catchments in the month of **September** offers some **lead time** for intervention measures to be put in place to mitigate the risks.



## **Deyr 2023 Climate Outlook: Implication on Livelihoods and Programming: Opportunities**

- The forecast cloudiness, light rains but largely **dry** conditions over the agro-pastoral areas in Hirshabelle in **September** are also **opportune** for land preparation
- The **subsequent enhanced rains** will likely lead to substantial recharge of water sources, replenished water catchment levels, and improved soil moisture conditions
- This will create **favorable conditions** for grass regeneration offering fodder for the livestock, and timely crop planting across the agro-pastoral livelihoods
- There is moderately high likelihood (70%) of warmer-than-usual temperatures over the Hirshabelle, which may lead to **substantial evaporation**. However, the forecast wet conditions (based on SPI) is expected to avail reasonably sufficient **soil water** for (e.g., sorghum) crop and fodder production



Food and Agriculture Organization  
of the United Nations

THANK YOU



El-Nino Partner

Preparedness and Capacity —

FSC

# El-Nino Partner Preparedness and Capacity

- On 19 July 2023, FAO gave an early warning presentation to humanitarian partners, local authorities and other stakeholders on the projected El-Nino impact in Hirshabelle State, this early warning alert **predicts a “1 in 100 year”** flood to occur, which is expected to cause a large scale humanitarian crisis with an estimated depth of 2-3 meters causing unprecedented destructions to agricultural farmlands, markets, assets, and commercial supplies into the state, leaving over an **estimated 600,000 people** affected across the state.

*Below table shows the estimated flood-affected population by district in Hirshabelle State (Source: OCHA).  
The FSC will target 40% of the flood-affected population.*

State	Region	District	Flood Affected (OCHA)	FSC Planning Assumption
Hirshabelle	Hiraan	Belet Weyne	199,212	79,685
Hirshabelle	Hiraan	Bulo Burto	23,086	9,234
Hirshabelle	Hiraan	Jalalaqsi	21,618	8,647
Hirshabelle	Middle Shabelle	Jowhar	287,572	115,029
Hirshabelle	Middle Shabelle	Balcad	106,028	42,411
<b>TOTAL</b>			<b>637,516</b>	<b>255,006</b>

# El-Nino Partner Preparedness and Capacity

## Partner Capacity and Preparedness

The Food Security Cluster approach to the El-Nino response will be categorized into **three main operational phases**, this will allow for better planning and an effective coordination amongst all partners. Each phase will need to be adequately achieved to ensure the effectiveness of the whole approach while ensuring minimum negative impact to the affected population.

<b>Phase 1: Mitigation (July-October)</b>	<b>Phase 2: Immediate/emergency life-saving assistance (October-December)</b>	<b>Phase 3: Recovery assistance (January-March)</b>
<p>To reduce the possible devastating impact to the prone communities, mitigation works are urgently needed to safeguard vulnerable lives and assets from further damage, immediate <b>rehabilitation and reconstruction of riverine infrastructure</b> needs to start especially along the upstream of the Shabelle river including <b>mapping of breakage status, capacity building programmes, information sharing, sensitization and awareness creation.</b></p>	<p>Once the flood occurs, an <b>immediate food assistance will be urgently needed</b>, making sure the affected families have access to food for survival. This is especially true, considering that markets, and other means of livelihood will be disrupted leaving the communities to rely on humanitarian assistance. <b>In-Kind food assistance and other ready-to-eat meals will be most appropriate</b> in the immediate situation especially in more rural and riverine areas where market may not be functional or farther away, other modalities like cash, voucher and money transfers will be implemented through informed decisions.</p>	<p>Upon recession of the floods, and access becomes easier, a <b>recovery programme</b> will be required to ensure the affected population slowly begin to return to their pre-flood conditions, <b>farmlands will require replanting</b> where possible, <b>livestock support</b> to be strengthened for their reproductive health and avert any disease outbreaks, provide <b>market linkages to smallholder farmers</b> and deploying capacity building programmes for <b>income generating activities</b> to ensure self-sustenance.</p>

# El-Nino Partner Preparedness and Capacity

## Gaps, Needs and Challenges

- Based on current partner capacity, about **126,420 people will be denied** food security assistance.
- **No planned emergency assistance** has been reported in both Jalalaqsi and Bulo Burte districts.
- Need for **increased capacity building programmes** to frontline organizations on effective monitoring, assessment, and planning.
- Many partners have reported **severe funding shortfall** in their programming which will lead to further reduction in the overall response if not urgently addressed.
- **Constrained access** is expected during the floods due to muds and submerged roads, alternative means of transportation like boats will be required to **deliver lightweight assistance** packages and facilitate **assessment and monitoring**.

## Next Meetings

- **Hiran RCM:** 10th October 2023 (2:00PM-3:30PM)
- **Middle Shabelle RCM:** 11th October 2023 (10:00AM-11:30PM)
- **Hirshabelle SCM:** 17th October 2023 (10:00AM-11:30AM)

THANK YOU

