

Food Security Cluster Coordination Meeting Hirshabelle State

15-August-2023

Agenda

1. Introduction and opening remarks (MoHADMD, MoAI, MoLFR)
2. Review of action points from previous meeting
3. FSC Partner Response Overview (June 2023)
4. Rapid Assessment in Cadale District – INOCDO
5. AOB
 - a. Preliminary findings from Balcad Flood RNA
 - b. El-Nino Preparedness Planning

Introduction and opening
remarks (MoAI, MoLFR,
MoHADDM)

Previous action points

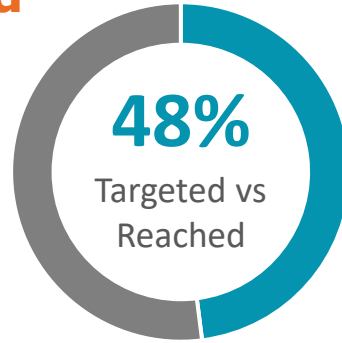
1. FSC to share Partners' Response Overview for May 2023. – **DONE**
2. FSC and Nutrition Cluster to organize a joint meeting on the Nutrition-Relief referral programming. – **PENDING**
3. FSC to share further updates on the planned multi-cluster post flood assessment. – **DONE**
4. WFP to share their presentation from June's coordination meeting. – **PENDING**
5. FSC partners to share Q3 response planning. – **DONE/ONGOING**

FSC Partner Response Overview (June 2023)

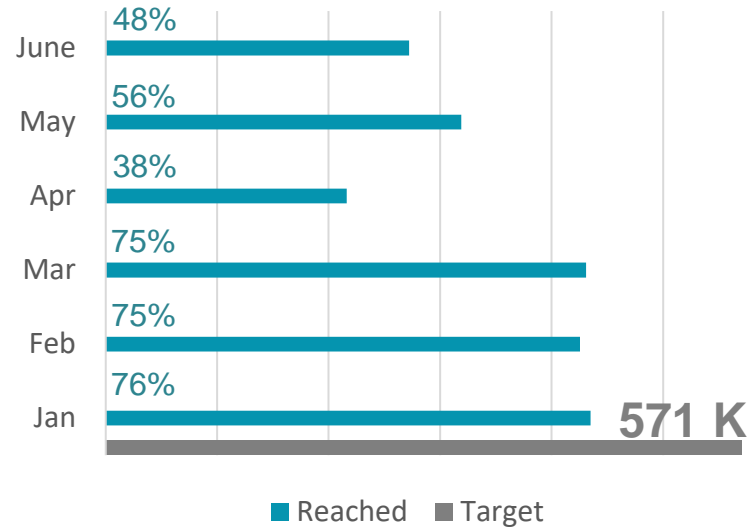
People Targeted vs Reached (Monthly)

571 K
People Targeted

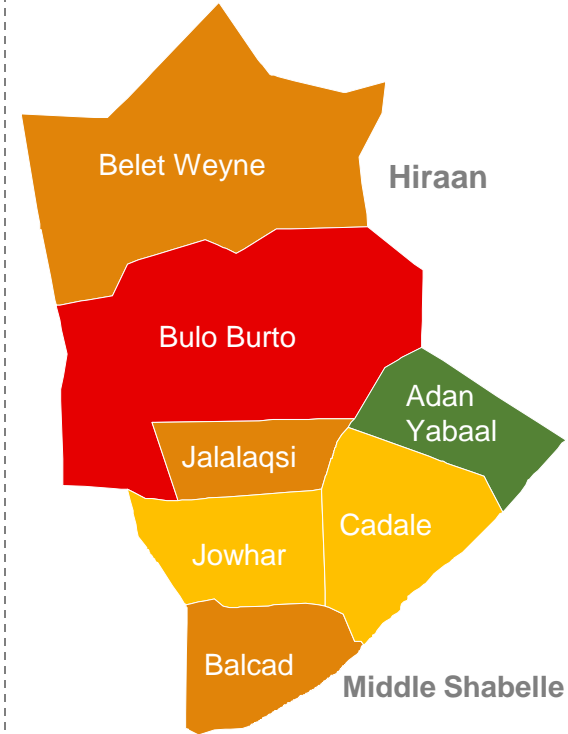
272 K
People Reached



People Targeted vs Reached (Per Month)



Coverage Map



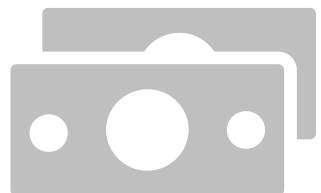
Response by Modality (Monthly)

164 K
Cash

72 K
Voucher

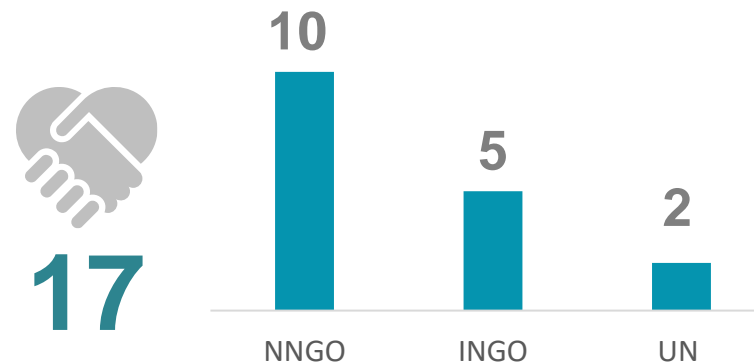
36 K
In-kind

Cash & Vouchers Transferred (Monthly)

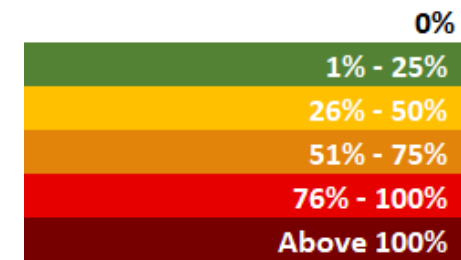


2.9 M \$

Total Partners (Monthly)



% of response coverage



FS Response District Level (SO1) | June 2023

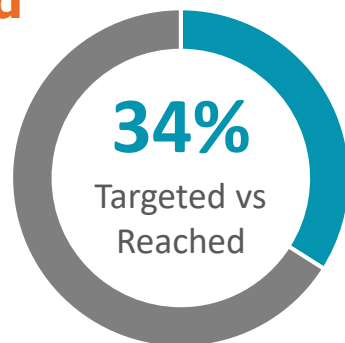


Region	District	FSC 2023 HRP Target (SO1)	(SO1) Improve availability and access to food actual achievement (Monthly)	% of response coverage vs FSC 2023 HRP Target
Hiraan	Belet Weyne	131,010	87,732	67%
	Bulo Burto	38,730	29,418	76%
	Jalalaqsi	22,710	12,360	54%
Middle Shabelle	Adan Yabaal	36,980	1,320	4%
	Balcad	171,610	92,568	54%
	Cadale	32,400	10,674	33%
	Jowhar	137,560	38,178	28%
Total		571,000	272,250	48%

People Targeted vs Reached (Cumulative)

425 K
People Targeted

145 K
People Reached



Response by Modality (Cumulative)

0.16 K
Cash

77 K
Voucher

47 K
In-kind

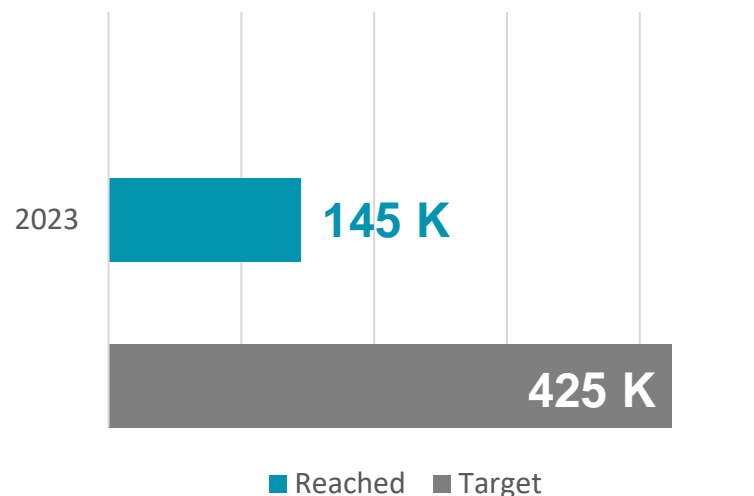
19 K
Training

Cash & Vouchers Transferred (Cumulative)

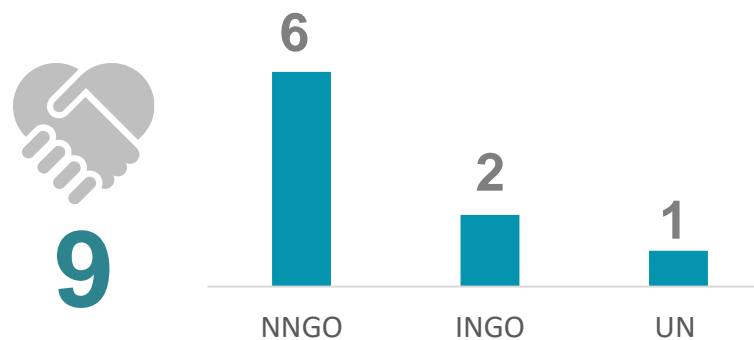


269 K \$

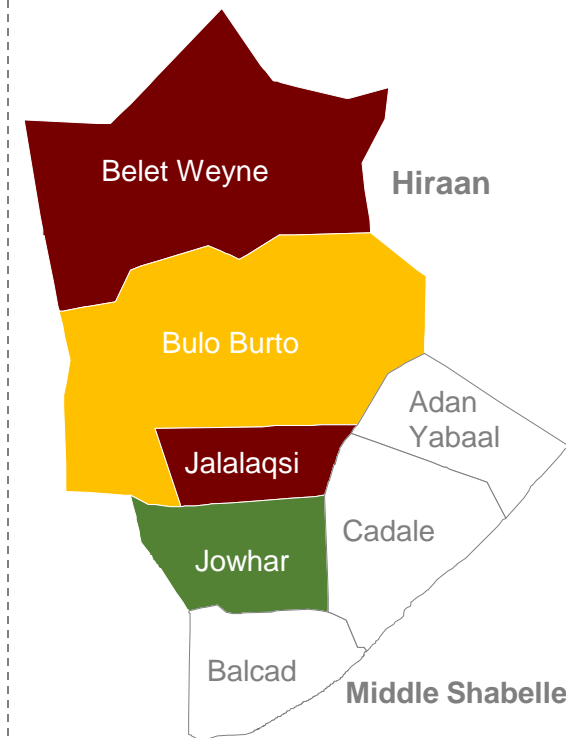
People Targeted vs Reached (Per Month)



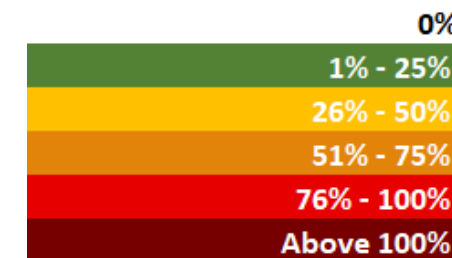
Total Partners (Cumulative)



Coverage Map



% of response coverage



FS Response District Level (SO2) | June 2023

Region	District	FSC 2023 HRP Target (SO2)	(SO2)Protect livelihoods and related food and income sources (Cumulative)	% of response coverage vs FSC 2023 HRP Target
Hiraan	Belet Weyne	85,617	87,312	102%
	Bulo Burto	35,080	12,642	36%
	Jalalaqsi	16,380	25,704	157%
Middle Shabelle	Adan Yabaal		0	
	Balcad	127,410	0	0%
	Cadale	32,400	0	0%
	Jowhar	127,668	19,170	15%
Total		424,555	144,828	34%

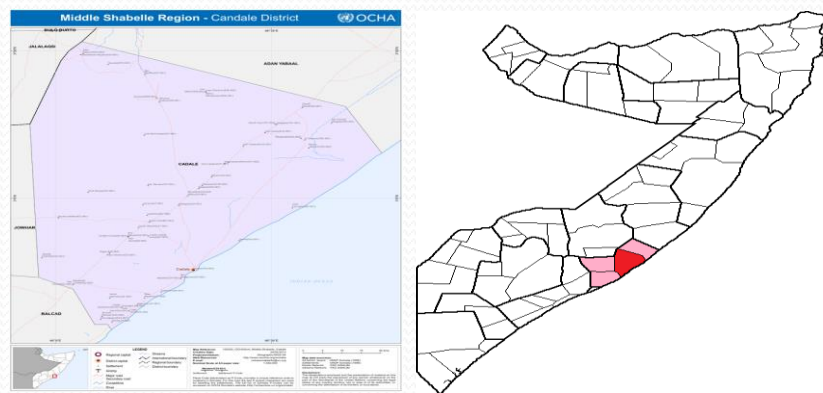
Rapid Assessment in Cadale District – INOCDO

Rapid Assessment on Inter-Clan Clashes In Adale District Conducted on 6/8/2023

Geographical Location;

Adale District is located in the southeastern part of Middle Shabelle Region of Somalia, it's headquarter is the coastal town of Adale.

The population of Adale district is estimated at 46,720. Majority of this population are agro- pastoralists who depend on livestock and few practice subsistence farming. The district is mainly inhabited by Abgal sub-clan of Hawiye clan.



Introduction;

Between 17 to 21st of July, 2023 a violent inter-klan clashes erupted in parts of the district, this resulted in the displacement of about 2,814 households, led to the death of 25 people and 13 wounded. Additionally 367 houses were burnt, 30 houses demolished/damaged, 42 shops looted, 2 cars burnt and 1 car and an estimated number of livestock taken away in Biyo Madobe, Gefo, Horcad, Bulla Cagey and Boos Muluq villages.

The fighting involved Mohamed Muse and Abdalla Aroone families of Abgal sub clan who are neighbors. Conflicts between these 2 communities have been existing for decades. Women, children, elderly, and people of disabilities are among those displaced by this conflict.

Rapid Assessment on Inter-Clan Clashes In Adale District

Mediation talks led by the former president of Somalia his Excellency Shariff Sheikh Ahmed, The Ugas, The imam, the Sultan and other leaders of Abgal sub-clan are ongoing and so far ceasefire has been agreed by both parties involved in fight.

Methodologies Applied in the Assessment;

Rapid Assessment form was used as the assessment tool. Key informant interviews (KII), focus groups discussion (FGD) and observation methods were conducted by means of both qualitative and quantitative to acquire firsthand information on the ground.

The team managed to visit 4 villages which are among the most affected villages and a total of 12 focus group discussions each comprising a total of 12 persons composed of women, men, youth, elderly and persons with disabilities on the hand 24 key informants were interviewed during the assessment.

Cluster	Key Findings	Immediate/Priority Needs
Food Security and Livelihoods	<p>Drastic reduction in household food consumption with households relying on donations from relatives and well wishers in other villages and towns. There are limited food items in Raage Ceele market and being sold at high prices that the community could not afford to buy.</p> <p>Livestock especially goats and sheep are emaciated and cannot fetch good prices when sold in the market.</p> <p>Livestock especially goats and sheep are emaciated and cannot fetch good prices when sold in the market.</p> <p>Majority of the target population are mainly pastoralists while few are agro-pastoralists. As reported by FSNAU, UNOCHA and the Somalia Federal Government the serial drought in Somalia has greatly affected the said population making them among the most vulnerable in Somalia, they lost more than 80% of their livestock's to the drought, the few who are agro-pastoralist were equally not spared since they did not hard any yield from their rain feed farms. The few remaining livestock are affected by diseases, there are no veterinary medicines available and no qualified veterinary personnel/Community Animal Health Workers (CAHWS) in all the locations assessed.</p>	<p>Urgent provision of food aid to the affected people.</p> <p>Re-stocking of livestock to these people is also a priority need.</p>

Rapid Assessment on Inter-Clan Clashes In Adale District

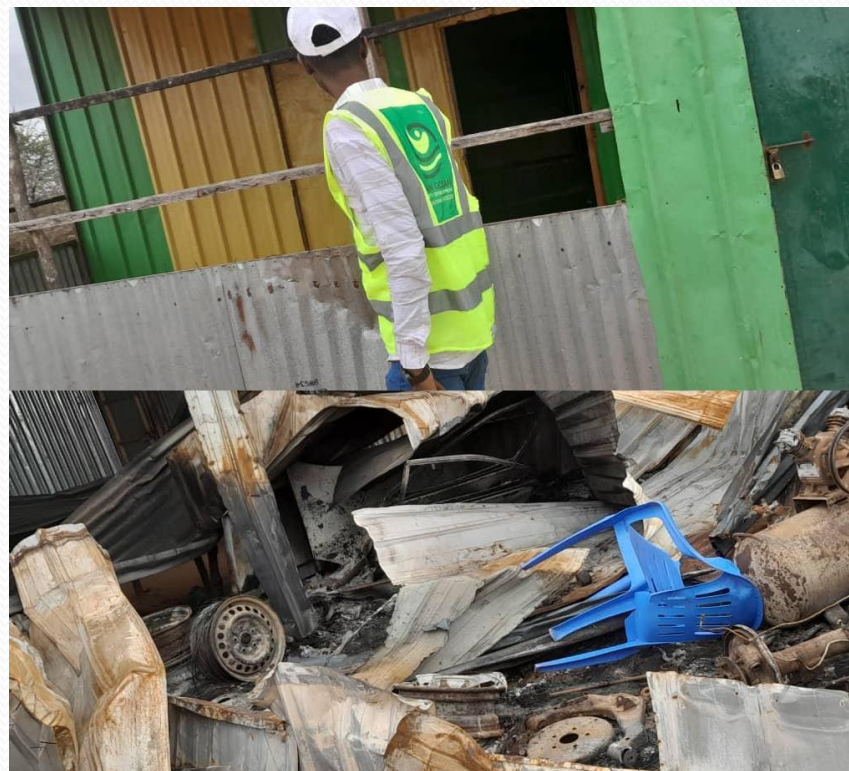
NFI/Shelter	<p>NFI/SHELTER; 367 houses have been burnt including none food items (NFI) and 30 houses demolished. Household members have moved to nearby bushes hiding and seeking refuge under trees in fear of been attacked by their rival clan.</p>	<p>Distribution of NFIs (Plastic sheets, Mosquito nets, mother kits, blankets, soap and sleeping mats is urgently Needed.</p>
WASH	<p>The hygiene and sanitation condition among the IDPs is extremely poor. Open air defecation is mainly practiced, deposits of feces were very common along the paths and around the tress they lived under since there are no latrines. Households were observed to be drinking water from unprotected water wells. Inadequate water containers were reported, and some dirty ones wereobserved.</p>	<p>There is urgent need for the distribution of hygiene kits to the affected households. Launching of hygiene promotion awareness raising programs. Distribution of aqua tabs is a priority.</p>

Rapid Assessment on Inter-Clan Clashes In Adale District

ANNEX 1 PHOTOS AFFECTED AREAS



Rapid Assessment on Inter-Clan Clashes In Adale District



Rapid Assessment on Inter-Clan Clashes In Adale District



Rapid Assessment on Inter-Clan Clashes In Adale District



Rapid Assessment on Inter-Clan Clashes In Adale District



ANNEX 2 LIST AFFECTED AREAS

NO	Village Name	District	No; of HH displaced	Coordinates	
				Latitude	Longitude
1.	Geyfo	Adale	976	2.6619885	46.0123816
2.	Biyamadoobe	Adale	463	2.8396112	45.9854564
3.	Horcad	Adale	329	2.6619883	46.0123814
4.	Bulla Cagey	Adale	271		
5.	Boos Muluq	Adale	775	2.7377424	46.0638488

Preliminary findings from Balcad Flood RNA

- Following the break of the Hawadley reservoir in Balcad district, a multi-cluster assessment was conducted with the following findings:
 - 1) A total of 25 villages were affected by the floods however, only 7 sites/villages were assessed due to security constraints.
 - 2) The assessment found that a total of 5,970 families, comprising 35,820 individuals, have been displaced as a result of the floods.
 - 3) 65% of the displaced families have been settled in IDP camps such as Alla-amin, Daryeel, Gargaar 1, and Gargaar 2.
 - 4) Approximately 2,221 livestock heads were reported to have died or been lost during the flood disaster.
 - 5) 27,373 hectares of ready-to-harvest farmland were affected by the floods.
 - 6) The situation of the IDPs is critical and urgently need immediate food assistance.
 - 7) Over 76 per cent of assessed families were depended on farming as main source of livelihood.

Preliminary findings from Balcad Flood RNA (Recommendations)

- Scale up food assistance/cash-based interventions across all displacement affected locations to bridge the gap.
- Provide vocational skills training for displaced people.
- Assistance for income generation activities is highly needed

EI-Nino Preparedness Planning

- A joint Jubaland and Hirshabelle State early warning presentation made on 19 July 2023.
- Need to develop a cluster preparedness plan for the anticipated EI-Nino effect.
- The FSC will request partners to share their plans, capacity and stocks.
- A working committee will be established to guide and facilitate the process.
- The FSC is requesting FAO technical team to produce geographic vulnerability maps by scenarios.
- Resilience-related and durable solutions are highly advocated for to mitigate the impact of the EI-Nino effect.

Next Meetings

- **Hiran RCM:** 5th September 2023 (2:00PM-3:30PM)
- **Middle Shabelle RCM:** 6th September 2023 (10:00AM-11:30PM)
- **Hirshabelle SCM:** 12th September 2023 (10:00AM-11:30AM)

THANK YOU

